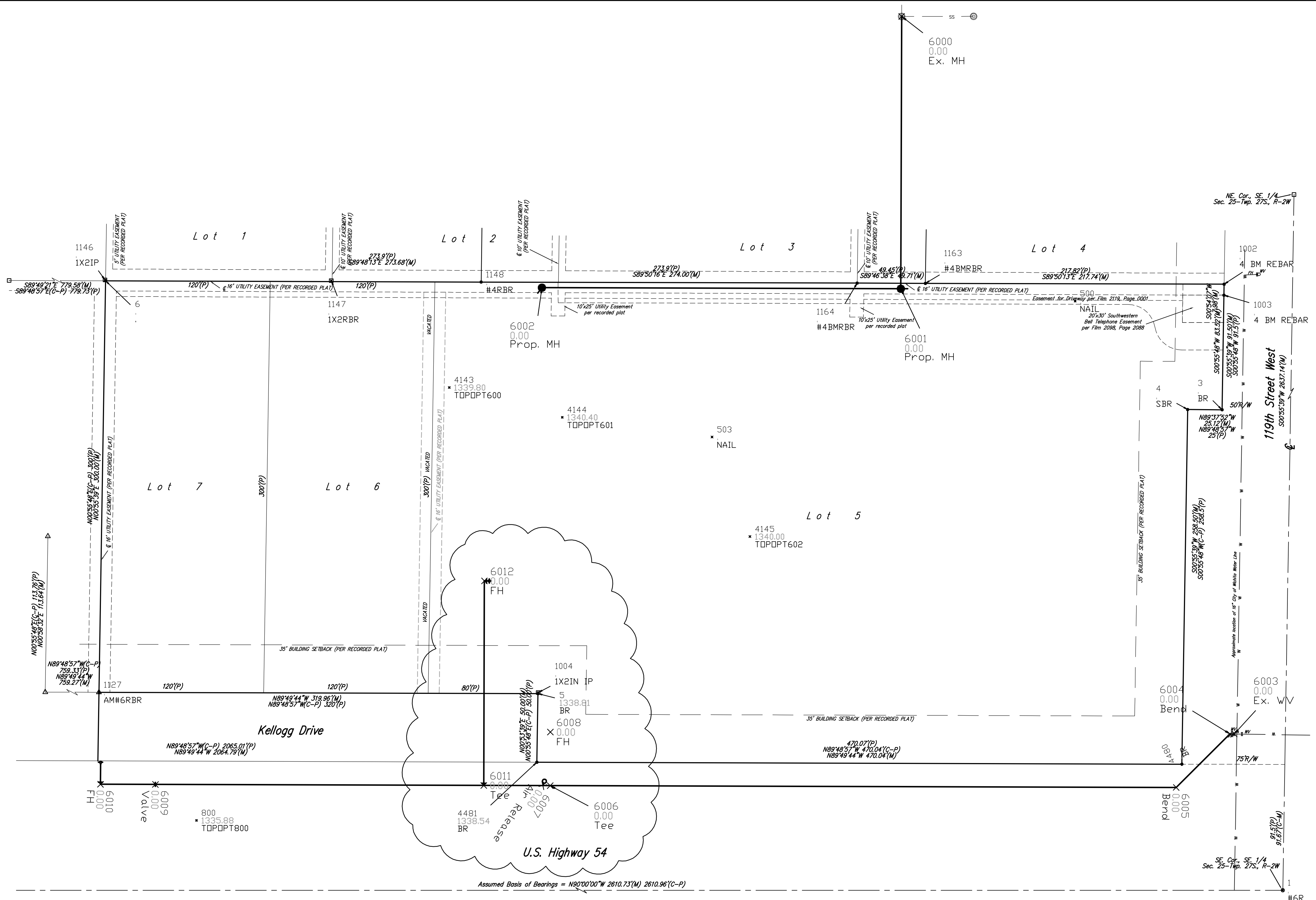


Scale: 1" = 40'

* = #4 Baughman Rebar Found
 ○ = #6 Rebar Found
 □ = 1/2" Iron Pipe Found
 △ = #6 Armstrong Rebar Found

 (C) = Calculated
 (M) = Measured
 (P) = Plotted

Pt. #	North	East	Elev.	Desc.
1	5000.0000	5000.0000	-99999	#6R
3	5350.1900	4955.7800	-99999	BR
4	5350.3500	4930.6600	-99999	SBR
5	5143.2900	4457.2500	1338.8100	BR
6	5444.2000	4142.1400	-99999	
500	5429.3467	4848.7213	-99999	NAIL
503	5330.2906	4584.0774	-99999	NAIL
800	5050.8826	4208.3789	1335.8797	TOPOPT800
1002	5441.6773	4927.2660	-99999	4 BM REBAR
1003	5433.6955	4957.1404	-99999	4 BM REBAR
1004	5144.0869	4457.4124	-99999	1X2IN IP
1127	5144.2421	4137.2850	-99999	AM#6RBR
1146	5444.7617	4141.6872	-99999	1X2IP
1147	5444.2285	4306.6032	-99999	1X2RBR
1148	5443.2661	4415.8237	-99999	#4RBR
1163	5442.2975	4739.5277	-99999	#4BMRBR
1164	5442.4906	4689.8201	-99999	#4BMRBR
4143	5366.3929	4392.5857	1339.7995	TOPOPT600
4144	5344.6750	4474.9243	1340.4032	TOPOPT601
4145	5257.7634	4611.6884	1339.9950	TOPOPT602
4480	5091.8800	4926.4900	-99999	BR
4481	5093.2900	4436.4400	1338.5400	BR
6000	5636.8114	4222.2227	0.0000	Ex. MH
6001	5438.3671	4721.6461	0.0000	Prop. MH
6002	5439.1504	4460.1051	0.0000	Prop. MH
6003	5113.8829	4964.5460	0.0000	Ex. WV
6004	5113.8919	4961.5460	0.0000	Bend
6005	5074.8972	4922.3176	0.0000	Bend
6006	5076.2595	4466.1859	0.0000	-Tee-
6007	5076.2754	4460.8523	0.0000	Air Release
6008	5115.2997	4466.3924	0.0000	-FH-
6009	5077.1190	4178.4246	0.0000	Valve
6010	5077.2384	4138.4248	0.0000	FH
6011	5076.4042	4417.7497	0.0000	Tee
6012	5225.4035	4418.1947	0.0000	FH



Baughman Wheatridge Addition
 Coordinate Sheet
 Water Distribution System

Baughman Company, P.A. 315 Bill St. Wichita, KS 67211 P 3162637211 F 3162630149
 ENGINEERING | SURVEYING | PLANNING | LANDSCAPE ARCHITECTURE

PROJECT NUMBER 448-90367	DESIGN MWS	DRAWN MWS
REVISIONS Mar 18, 2008 MWS Moved Line 2 west and extended line farther north	APPROVED	DATE 01/08
	SCALE Noted	
	SHEET	R10 OF 11

E:\eng\Wheatridge Addition\stake plan.dwg 08-01-E023