

# GENERAL NOTES:

1. Contractor will be required to provide notice to utility companies a minimum of forty-eight (48) hours prior to any excavation, as follows:

Kansas One-Call 687-2470

The Contractor must notify the following in case of an emergency:

- Cox Communications 262-4270
- Kansas Gas Service 1-888-482-4950
- Westar Energy 383-8650
- Aquila Energy 1-800-303-0357
- AT&T 268-2245
- City of Wichita Water Dept. 268-4563
- City of Wichita Sewer Maint. 268-4024
- City of Wichita Storm Sewer Maint. 268-4090
- City of Wichita Traffic Maint. 268-4034
- Conoco Phillips Pipeline Co. 1-877-267-2290
- Southern Star Pipeline Co. 529-6600
- Kinder-Morgan Pipeline Co. 1-888-844-5658
- Wichita Gas Producers 773-1575

2. Utility service lines, poles, valve boxes, meters, and etcetera are to be adjusted as necessary by others prior to construction unless the plans specifically call for their adjustment by the Contractor or unless the plans specifically identify a utility to be adjusted by its owner during construction. Existing utilities and their location, as shown on the plans, represent the best information obtainable for design. The Contractor will be required to work around existing utilities within the right-of-way which do not conflict with proposed construction.

3. Rubble from the removal of miscellaneous structures and excess excavation which is to be wasted shall be disposed of on sites to be provided by the Contractor. These sites shall be approved by the Engineer as to suitability, appearance and site location. Locations, in the opinion of the Engineer, that will leave an unsightly appearance will not be approved. All disposal sites must be approved by the Kansas Department of Health and Environment. Material either stockpiled or disposed of in a flood plain would require a Kansas State Board of Agriculture permit. Any material dumped in waters of the United States or wetlands is subject to U.S. Corps of Engineers permitting regulations. Any material buried or stockpiled beyond approved construction limits would require additional archaeological investigations unless buried in a previously approved borrow location.

4. Trees and shrubs in public right-of-way which are in direct conflict with proposed new construction shall be removed by the Contractor with the Engineer's approval. Trees and shrubs which are not in direct conflict with proposed new construction shall be saved and protected from damage.

5. The Contractor shall give all property owners and/or tenants of developed property abutting the construction of this project a minimum of ten (10) days notice prior to start of construction.

6. The Contractor shall be responsible for preserving property irons. The Contractor will be required to re-establish any property irons which are damaged or destroyed by his construction operations. Such irons shall be re-established by a licensed land surveyor in accordance with state laws.

7. All existing and proposed erosion control measures including silt fencing, erosion control mat, straw bales, inlet barriers, and const. entrance shall be maintained throughout construction by the contractor and until project is accepted by the City of Wichita. The on-site engineer shall complete weekly reports on the status of erosion control measures. The contractor shall be required to comply with maintenance and/or replacement of erosion control measures as determined by the on-site engineer until project is accepted by City of Wichita. Maintenance and/or replacement of erosion control measures to be paid as bid items list.

8. All excess excavation shall remain on-site and shall be stockpiled or spread at a location determined by the engineer.

9. At conclusion of construction, an as-built survey will be completed by the engineer. The contractor will be required to finish and smooth grade all locations as necessary that are not within  $\pm 0.2'$  of street r/w plan grade or within  $\pm 0.3'$  of plan grade outside of street r/w. The contractor shall include all costs associated with the regrading and/or remobilization in the bid item "Mass Grading."

10. All areas disturbed during construction shall be seeded as noted on pond plan. Contractor shall prepare ground per City Specifications. All costs shall be included in bid item "Project Seeding".

11. The developer for this project is Jay Russell, (316) 722-2417.

# STORM WATER DRAIN #326 to serve EDGE WATER ADDITION

## CITY OF WICHITA, KANSAS

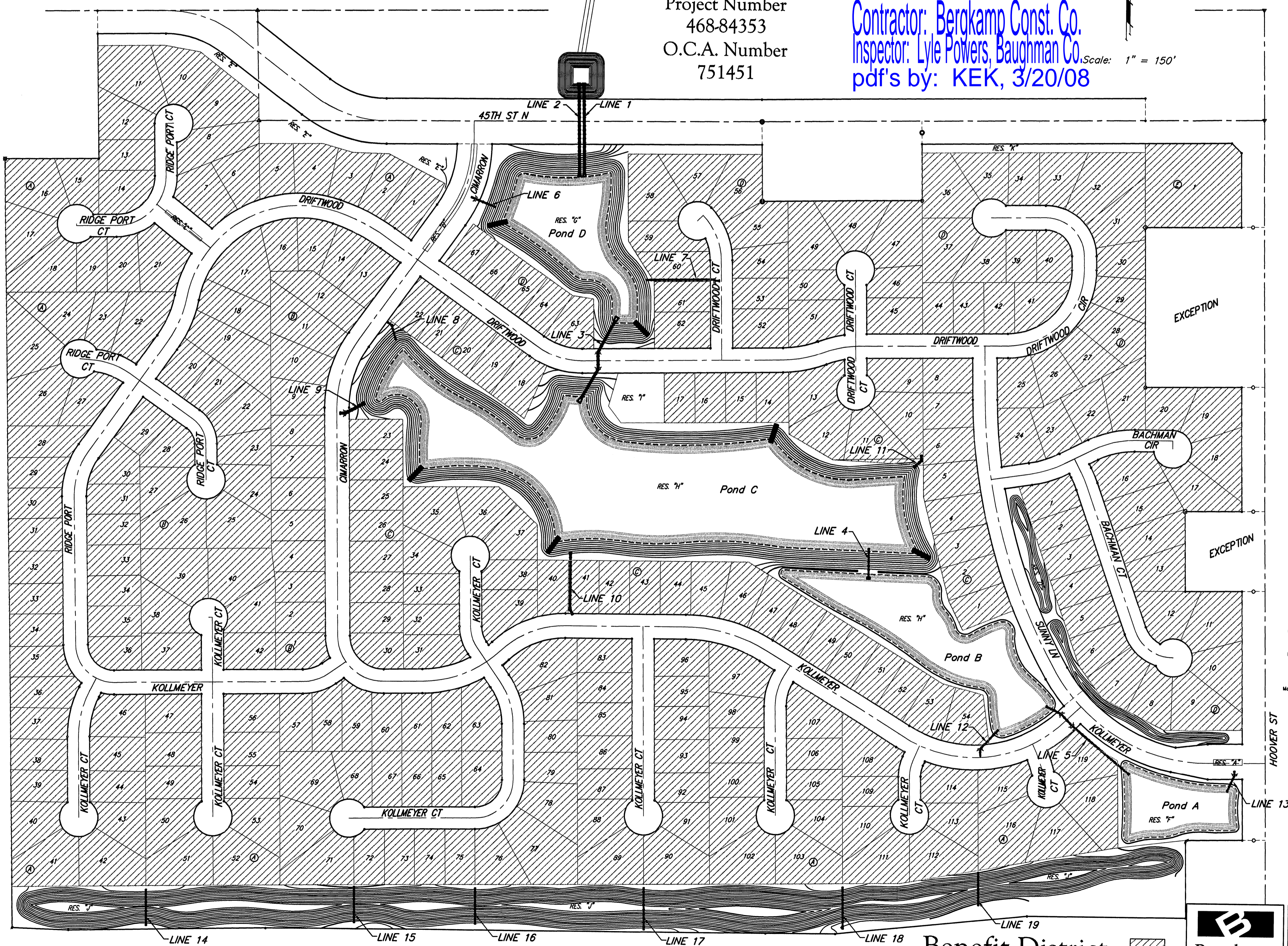
James L. Armour, P.E. City Engineer **As Built Plans**

Project Number  
468-84353

O.C.A. Number  
751451

Contractor: Bergkamp Const. Co.  
Inspector: Lyle Powers, Baughman Co.  
pdf's by: KEK, 3/20/08

Scale: 1" = 150'



## Benchmarks

BM #1: HOOPER AND 45TH ST. NORTH - COW BENCHMARK AT NE CORNER OF INTERSECTION, 10.20' SSE OF PP, 58.80' ESE OF PP ON NW CORNER, 85.50' NE OF GAS LINE MARKER, 59.00' NORTH OF GAS LINE MARKER, 28.50' EAST OF CENTERLINE, 14.50' NORTH OF CENTERLINE. ELEV. = 1335.29 (NGVD 29)

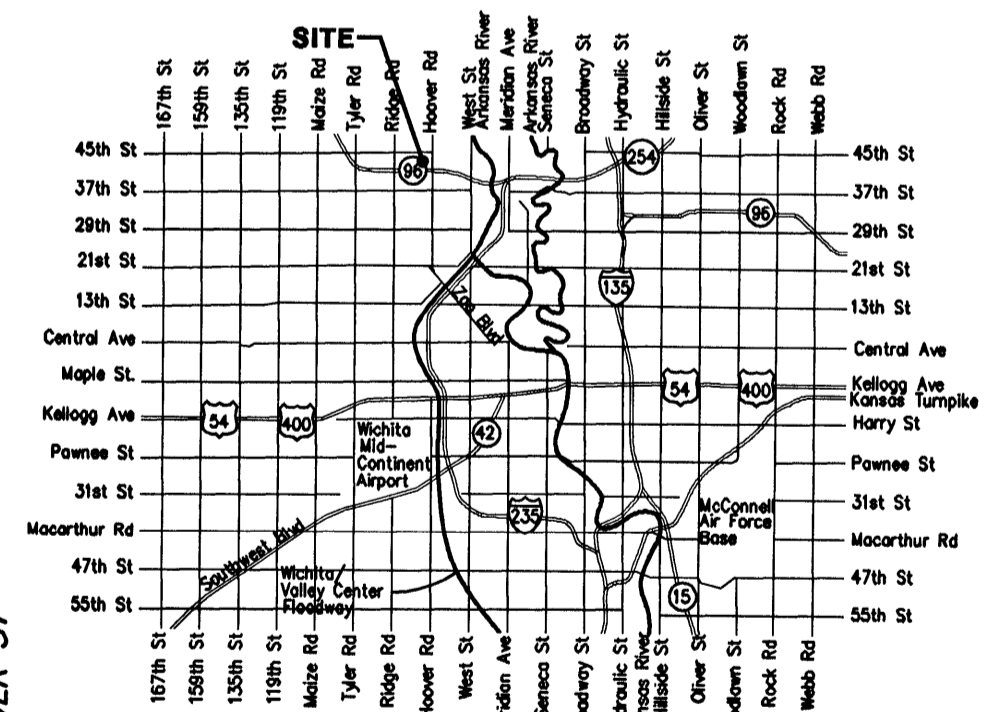
BM #2: Small RR spike in 3rd PP west of Hoover St. on the north side of 45th St. N. Elev. = 1337.68

BM #3: Small RR spike in 2nd PP east of NW corner of SEC. 27, TWP. 26-S, R-1-W (North side of 45th St. N., west of Hoover St.) Elev. = 1339.57

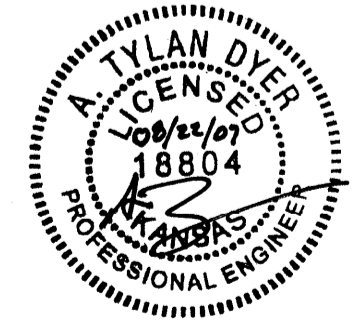
BM #4: 60d nail in PP at the SE corner of exception on west side of Hoover St., south of 45th St. N. Elev. = 1335.26

## Sheet Index

Title Sheet	1
Lines 1 & 2	2
Lines 3 & 4	3
Line 5	4
Line 6	5
Line 7	6
Lines 8 & 9	7
Lines 10 & 11	8
Lines 12 & 13	9
Lines 14, 15 & 16	10
Lines 17, 18 & 19	11
Special Inlet Manhole	12
Std. Type 1A Double Inlet Detail	13
Standard Manhole Detail	14
Std. Shallow Manhole Detail	15
Ring & Cover Detail	16
Headwall Detail	17-18
Mass Grading Plan	19-24
Mass Grading Details	25
Pond Plans A & B	26
Pond Plan C	27-28
Pond Plan D	29
Pond Cross Sections	30-35
Offsite Ditch Plan	36-37
Erosion Control BMP Details	38-41
Coordinate Sheet	42-43
Copy of Plot	44



## Vicinity Map



Baughman Company, P.A. 315 Ellis St. Wichita, KS 67211 P 316-262-7271 F 316-262-0149  
ENGINEERING | SURVEYING | PLANNING | LANDSCAPE ARCHITECTURE

Benefit District