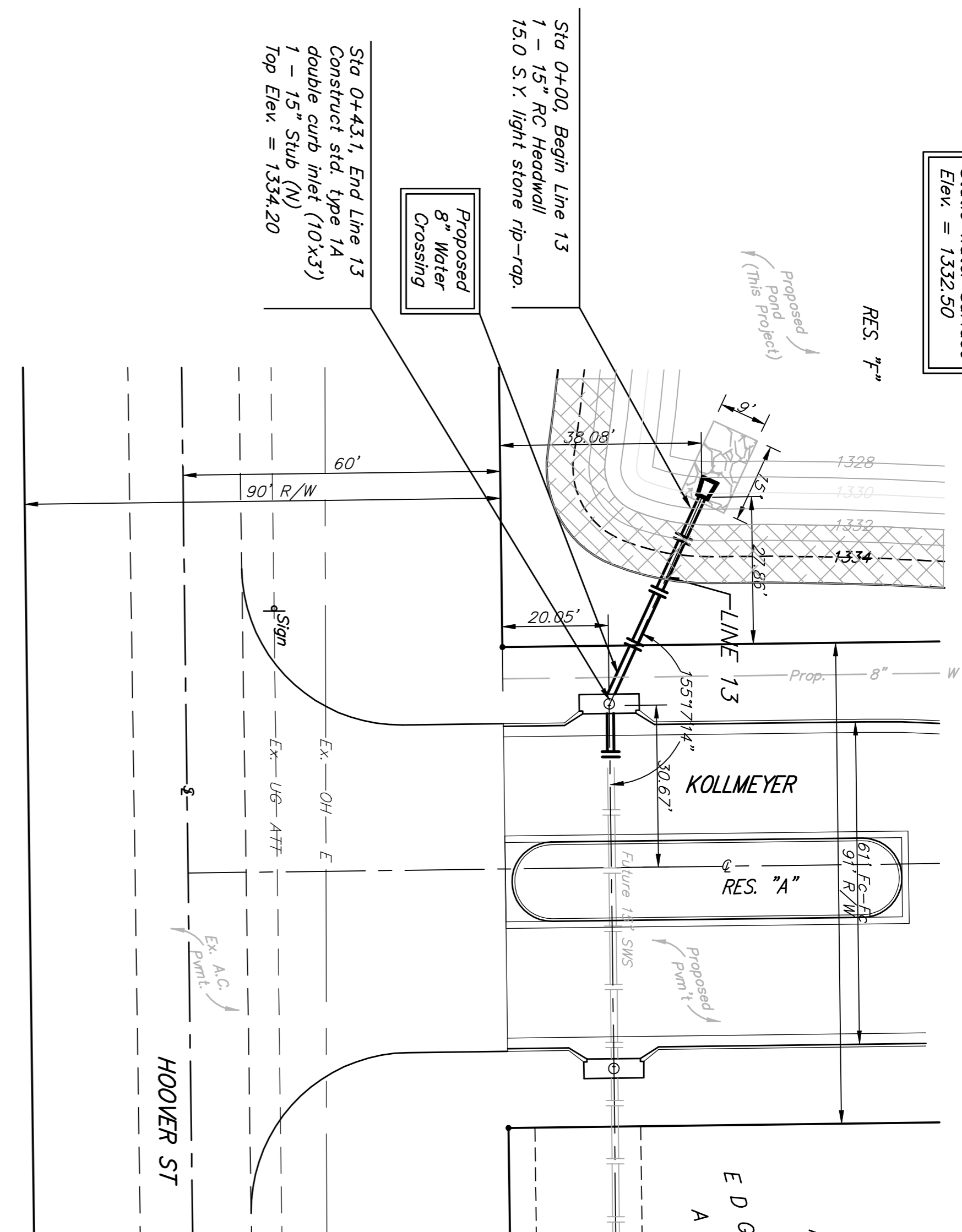
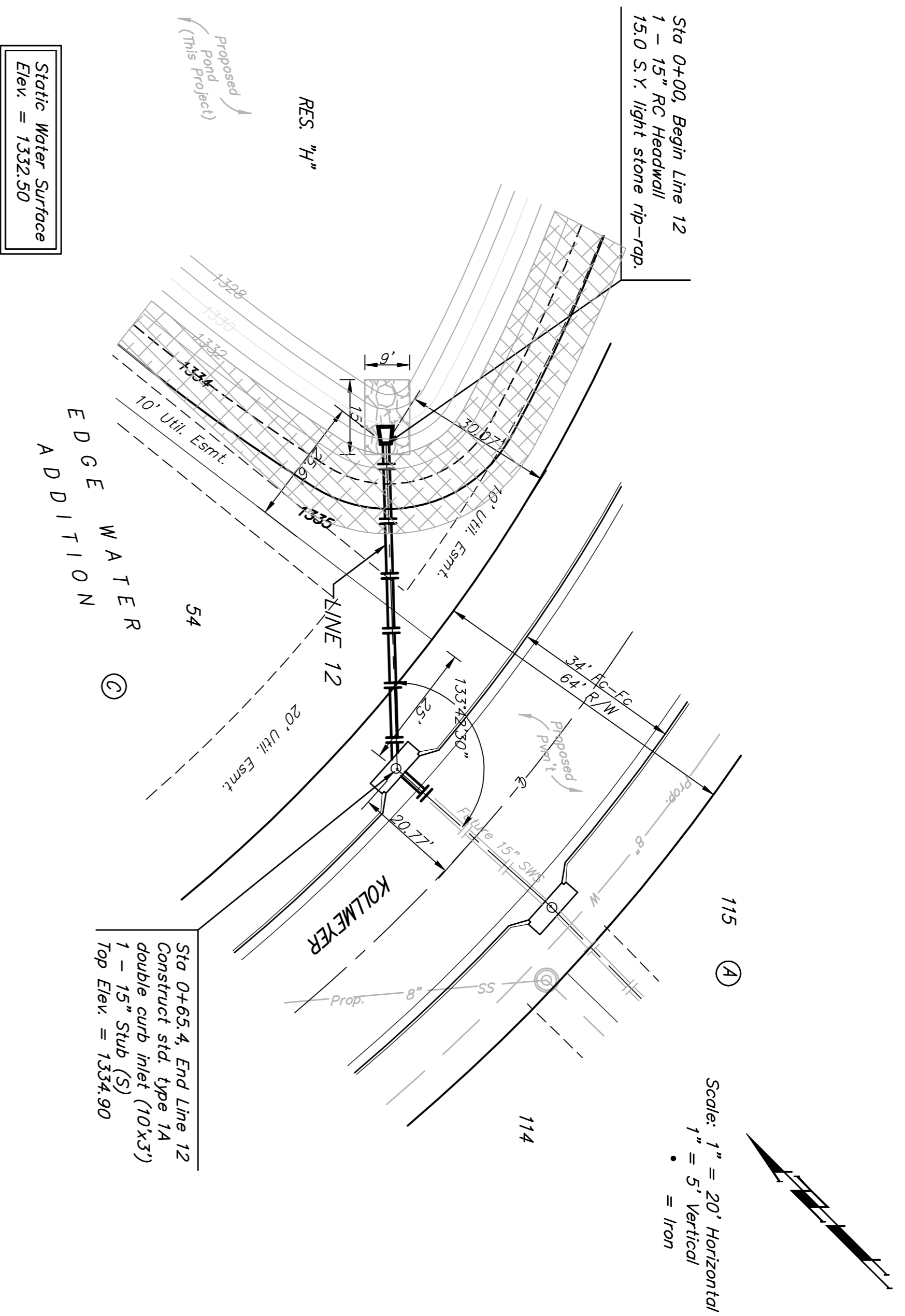


BENCHMARK:
 BM #1: HOOVER AND 45TH ST NORTH - COW BENCHMARK AT NE CORNER OF INTERSECTION, 10.20' SSE OF PP, 58.80' ESE OF PP ON NW CORNER, 85.50' NE OF GAS LINE MARKER, 59.00' NORTH OF GAS LINE MARKER, 28.50' EAST OF CENTERLINE, 14.50' NORTH OF CENTERLINE, ELEV. = 1335.29 (NGVD 29)
 BM #2: Small RR spike in 3rd PP west of Hoover St. on the north side of 45th St. N. Elev. = 1337.68
 BM #3: Small RR spike in 2nd PP east of NW Corner of SEC. 27, TWP. 26-S, R-1-W. (North side of 45th St. N., west of Hoover St.) Elev. = 1339.57
 BM #4: 60d nail in PP at the SE corner of exception on west side of Hoover St. south of 45th St. N. Elev. = 1335.26



1340			
1335			
1330			
1325			
1320			
0+00	1329.52 = Flow	0+50	1329.72 = Flow
			1329.78 = Flow Out (NE)
			1329.88 = Stub Flow (S)

1340			
1335			
1330			
1325			
1320			
0+00	1328.62 = Flow	0+43.1	1328.79 = Flow Out (SW)
			1328.89 = Stub Flow (N)

1340			
1335			
1330			
1325			

Baughman
 ENGINEERING | SURVEYING | PLANNING | LANDSCAPE ARCHITECTURE

EDGE WATER ADDITION
LINES 12 & 13
 STORM WATER DRAIN IMPROVEMENTS

PROJECT NUMBER: 468-44333
 DESIGN: TMS
 DATE: 08/07
 SCALE: None
 SHEET: 9 OF 44

07-03-EB39