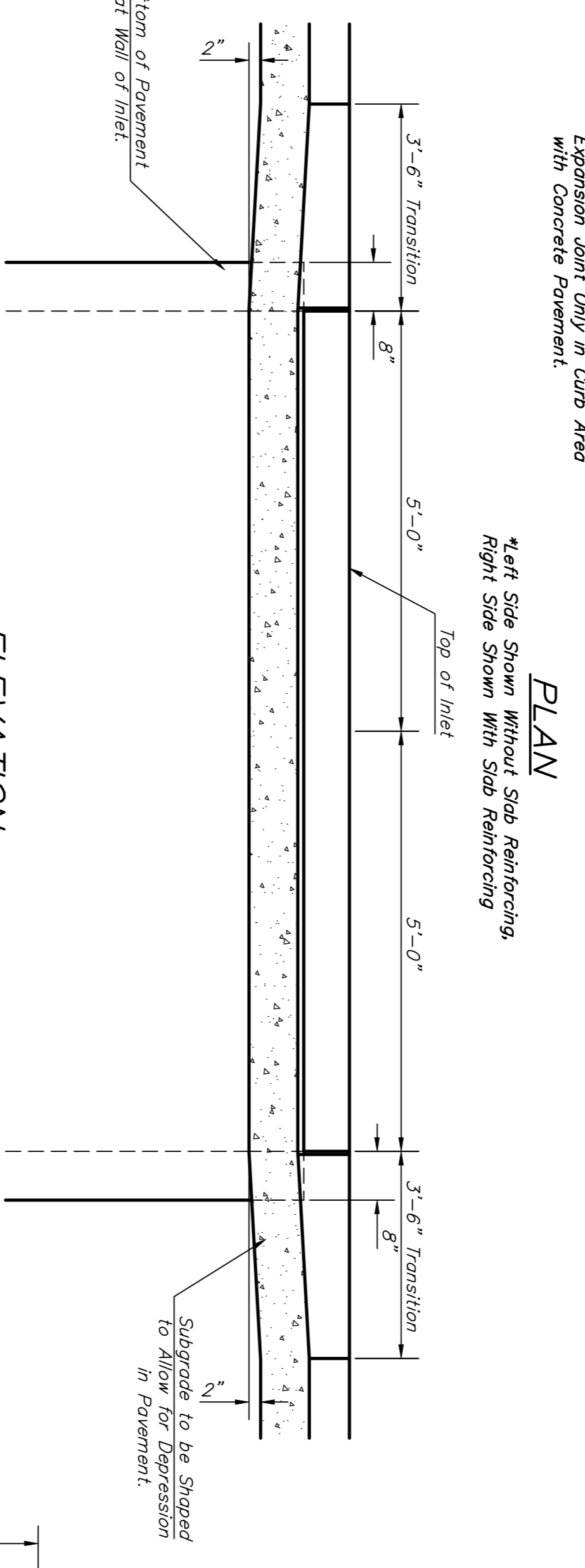
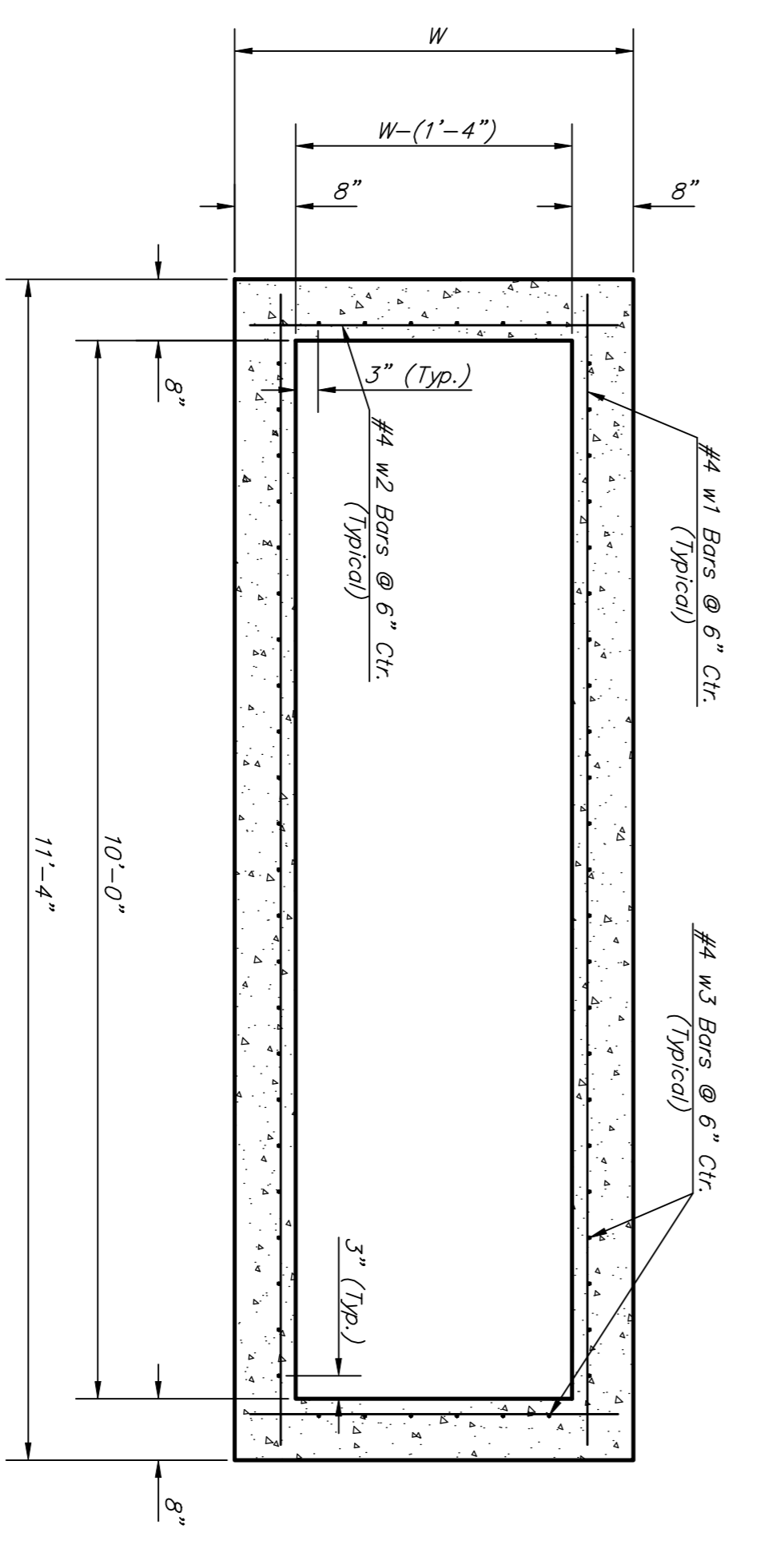


NOTE:
Expansion Joint Only in Curb Area with Concrete Pavement.

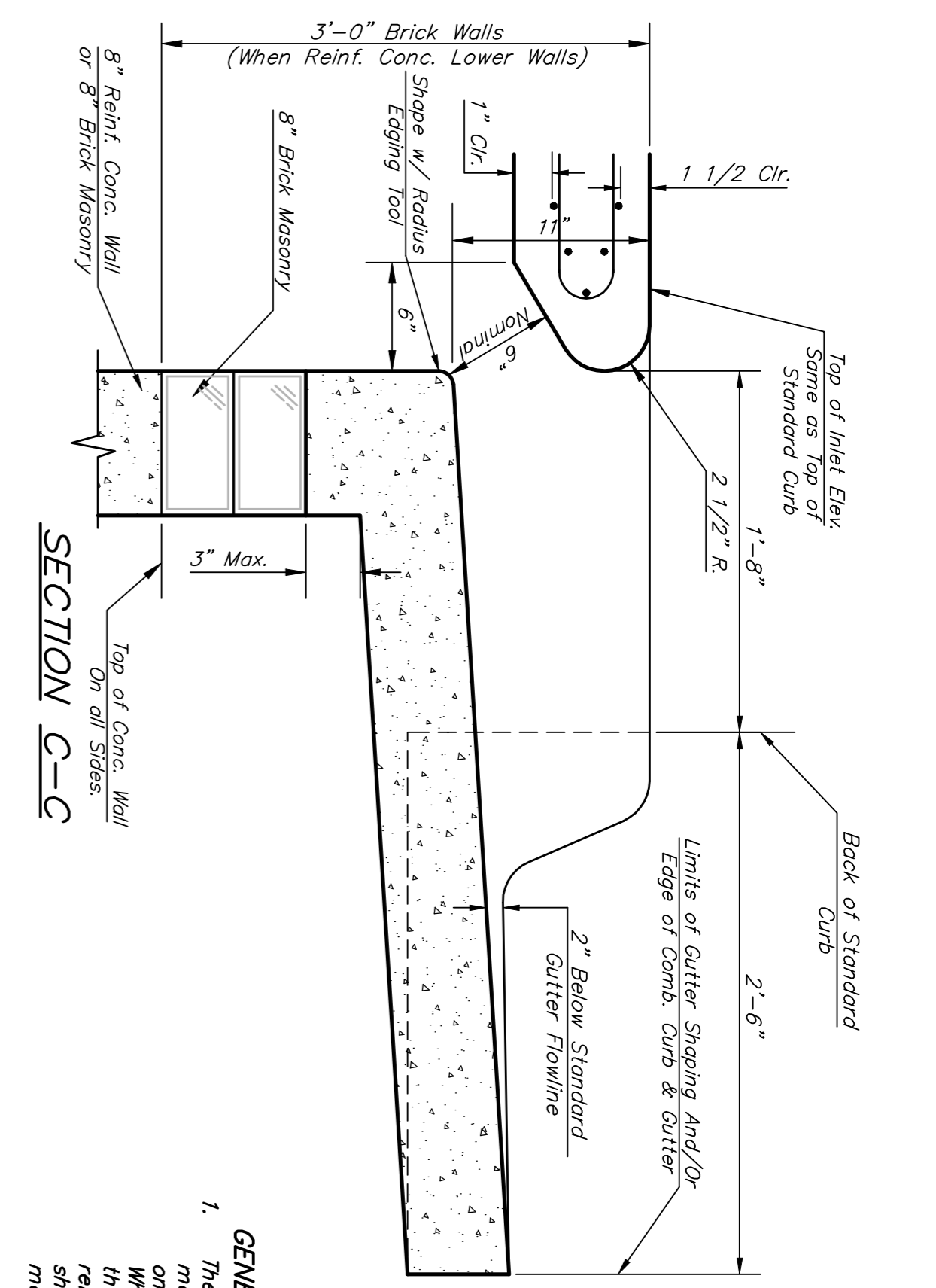
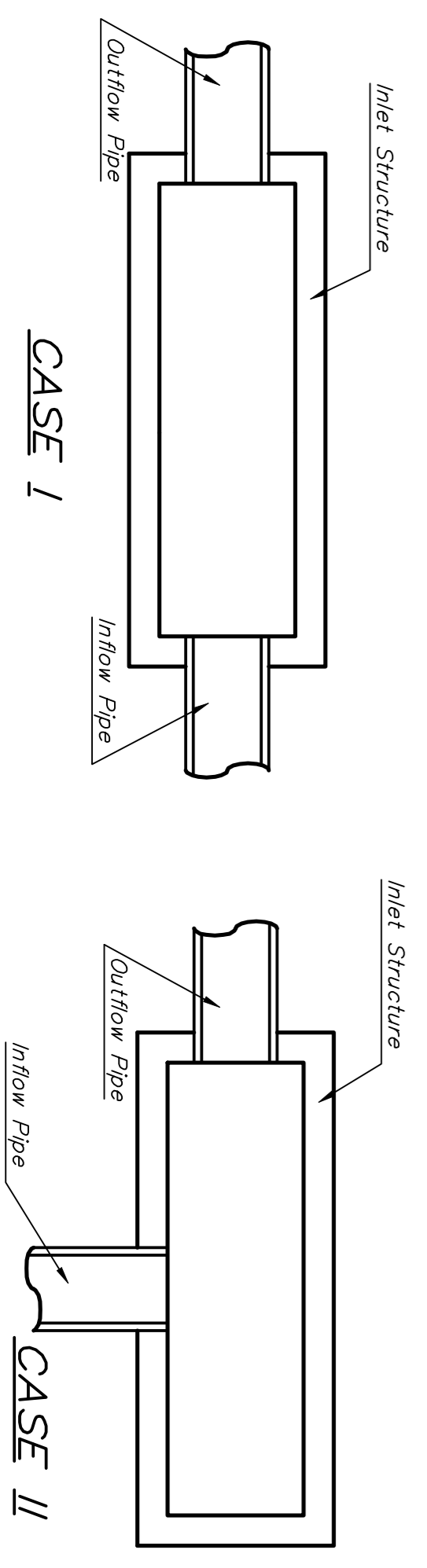
PLAN
*Left Side Shown Without Slab Reinforcing,
Right Side Shown With Slab Reinforcing.



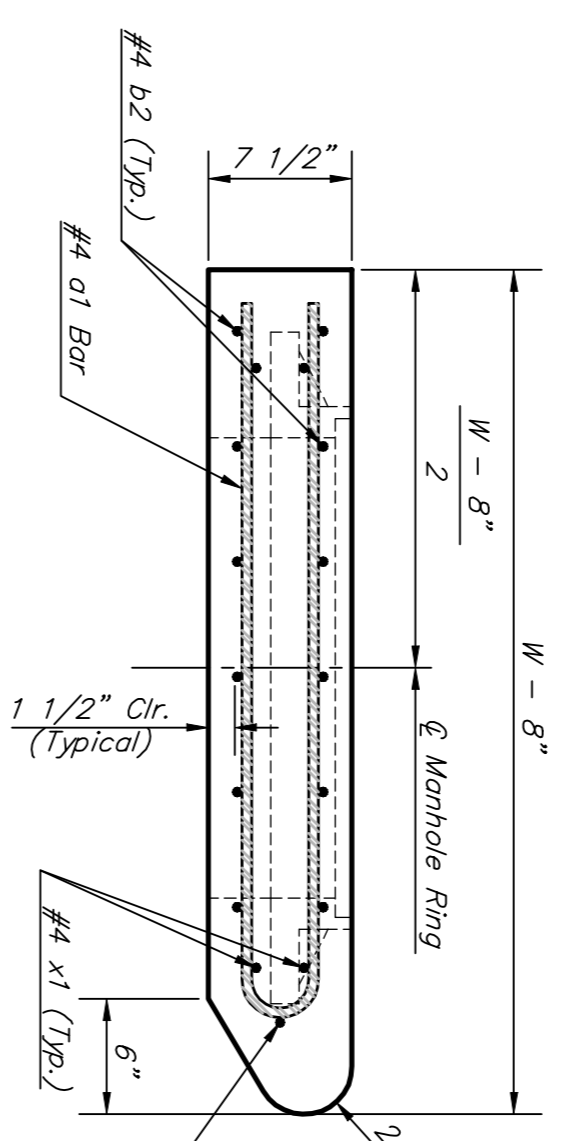
ELEVATION



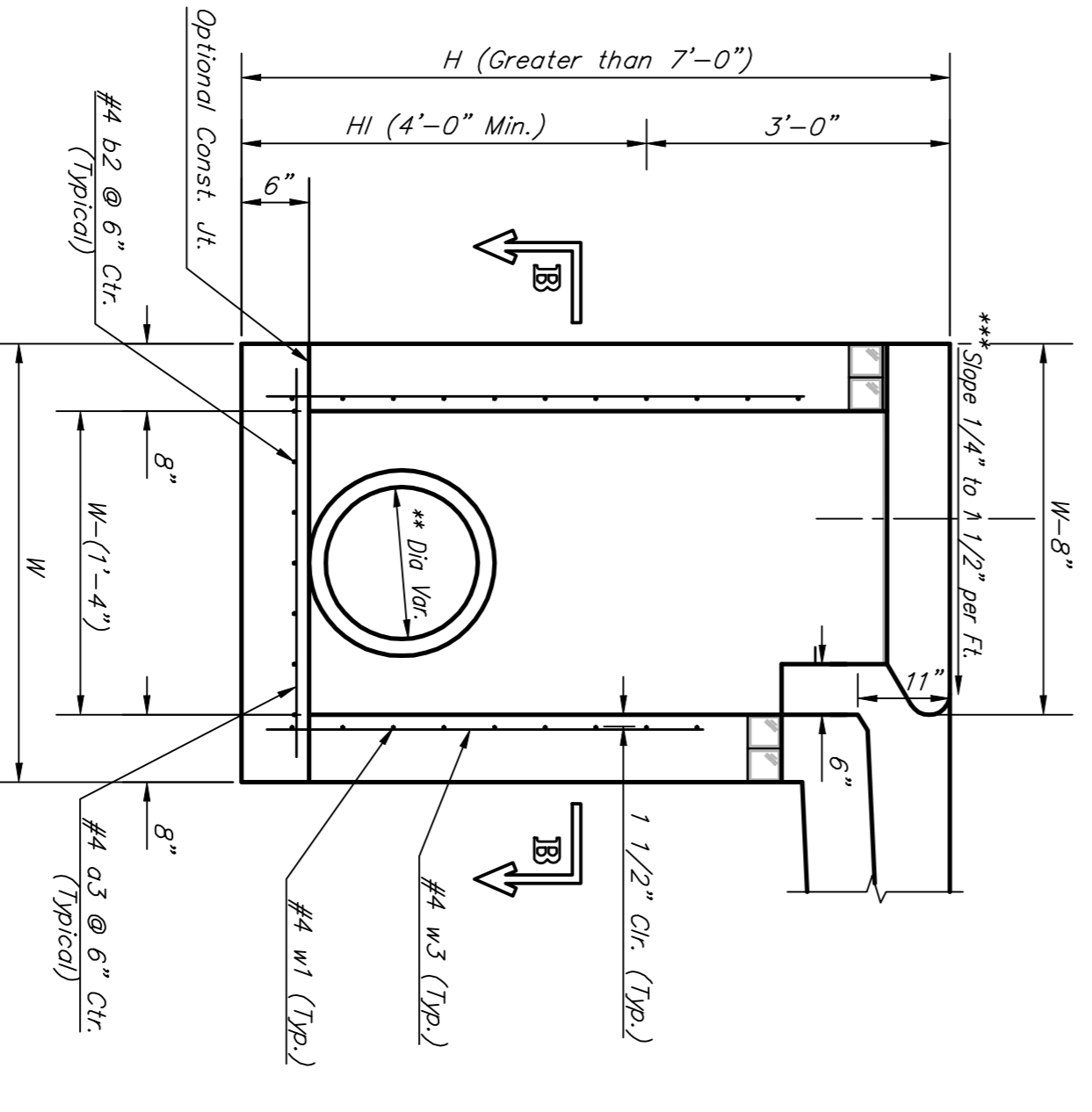
SECTION B-B



SECTION C-C



SECTION A-A



SECTION D-D

PRECAST SLAB AND FLOOR REINFORCING

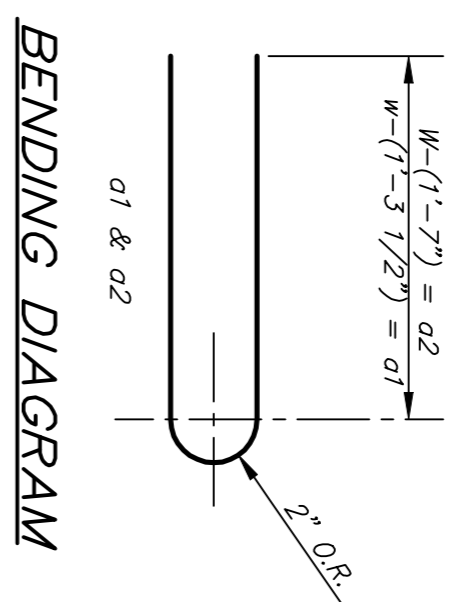
MARK	SIZE	NO.	LENGTH	NO.	LENGTH	NO.	LENGTH	NO.	LENGTH
*01	#8	13	6'-2"	13	8'-7"	13	10'-2"	13	12'-7"
02	#4	23	4'-1"	4	8'-0"	4	10'-0"	4	14'-0"
03	#4	23	4'-1"	23	5'-1"	23	6'-1"	23	8'-1"
*04	#4	1	9'-9"	1	9'-9"	1	9'-9"	1	9'-9"
*02	#4	23	11'-1"	29	11'-1"	35	11'-1"	47	11'-1"
x1	#4	16	3'-10"	16	4'-2"	16	4'-10"	16	5'-2"

WALL REINFORCING

MARK	SIZE	NO.	LENGTH	NO.	LENGTH	NO.	LENGTH	NO.	LENGTH
w1	#4	11	11'-1"	11	11'-1"	11	11'-1"	11	11'-1"
w2	#4	1	4'-1"	1	5'-1"	1	7'-1"	1	8'-1"
w3	#4	52	4'-1"	56	6'-1"	64	7'-1"	68	8'-1"

* Field Band or Cut Reinforcing as Required for Clearance.
 ① 4 (H1 - 12") (H1 - 21") Rounded down to nearest 0.5"
 ② H1 - 3"

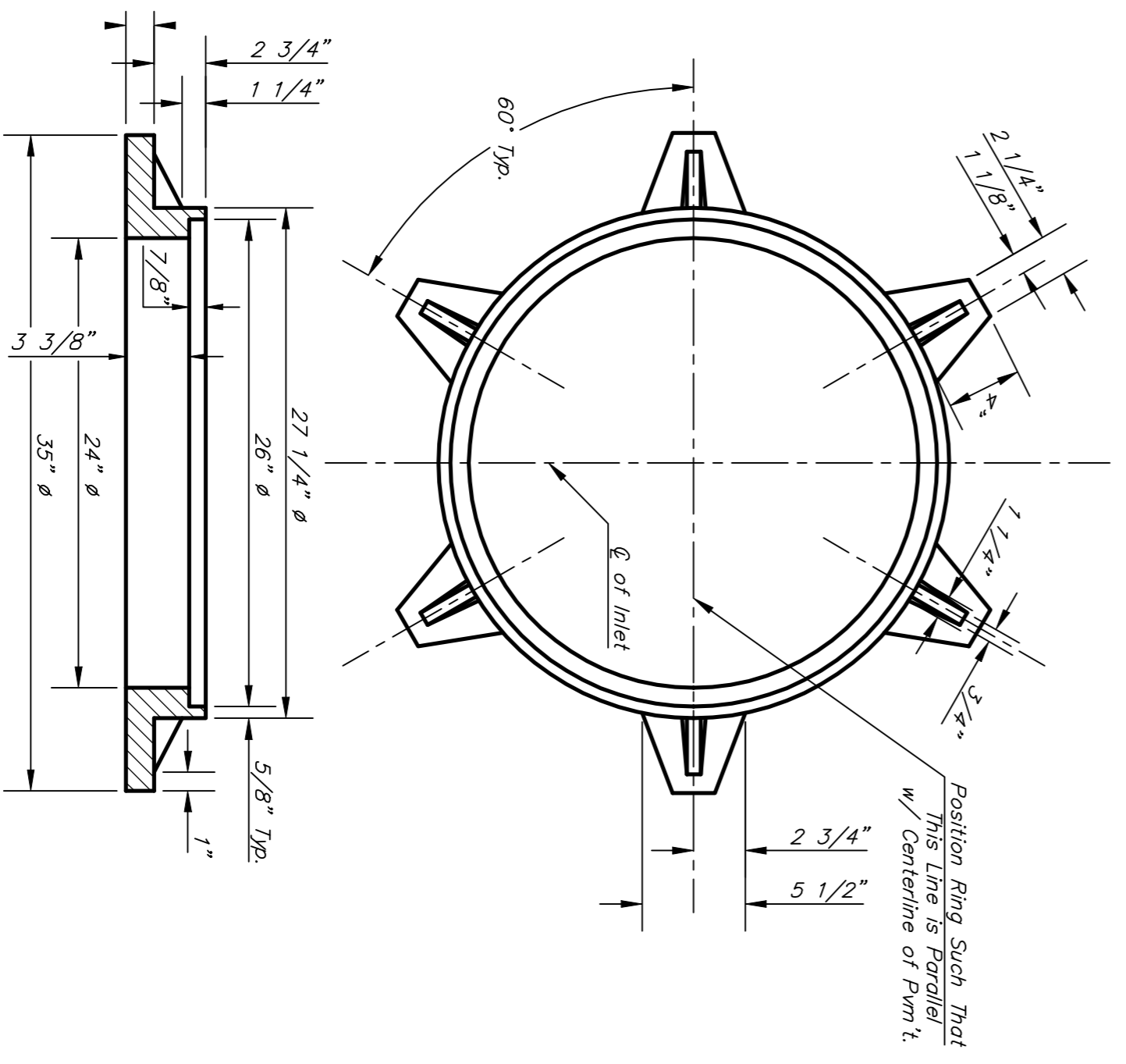
- GENERAL NOTES:**
- The contractor shall be required to construct 8" brick masonry walls between the concrete inlet base and top on this inlet when W=6'-4" or less and H=7'-0" or less. When W is greater than 6'-4" and H is less than 7'-0" the outside inlet walls below the brick stack shall be reinforced concrete construction and the center wall shall be of masonry construction as shown for the masonry wall option.
 - Inlet Invert shall be finished with 8 sack sand mix concrete to create flow channels and to increase hydraulic efficiency, such that the inlet will be self cleaning between all inlet and/or outlet pipes.
 - Concrete tops to be installed on thin mortar cushion to insure full support along brick walls. Concrete tops may be cast in place or precast. Concrete used for inlet construction shall be concrete pavement mix.
 - Inlet top reinforcing shall be spaced on 6" max. centers. Inlet ribs shall be notched out as indicated to facilitate construction of curb. Bars in inlet top to be field bent or cut to clear manhole ring.
 - The ends of all pipes installed in inlets shall be cut off flush with the inside face of the inlet wall.



BENDING DIAGRAM

STANDARD CURB INLET PRECAST TOPS

W	PRE-CAST TOP SIZE	PIPE SIZE	CU YD. CONC.
4'-4"	3'-8" 11'-4" 7 1/2"	21" & SMALLER	0.834
5'-4"	4'-8" 11'-4" 7 1/2"	24" & 30"	1.004
6'-4"	5'-8" 11'-4" 7 1/2"	36" & 42"	1.354
7'-4"	6'-8" 11'-4" 7 1/2"	48" & 54"	1.614
8'-4"	7'-8" 11'-4" 7 1/2"	60" & 66"	1.874



MANHOLE RING AND COVER

*See Standard Manhole Ring and Cover Detail Sheet for Cover Details to Be Used With Inlet Frame.
Weight = 180 lbs.

Baughman
CITY OF WICHITA STANDARD TYPE 1A
Inlet Opening = 6" X 10"0"

Engineering Company, P.A. 315 East St. Wichita, KS 67211 P.316.262.2771 F.316.262.0096
ENGINEERING | SURVEYING | PLANNING | LANDSCAPE ARCHITECTURE

PROJECT NUMBER: 40834353
DESIGN: C.O.W.
APPROVED: DATE: 06/07

DESIGN: DRAWN: STAFF
SCALE: NONE
SHEET: 13 OF 44

REVISIONS: DATE: 06/07
APPROVED: DATE: 06/07

Feb. 16, 1989