

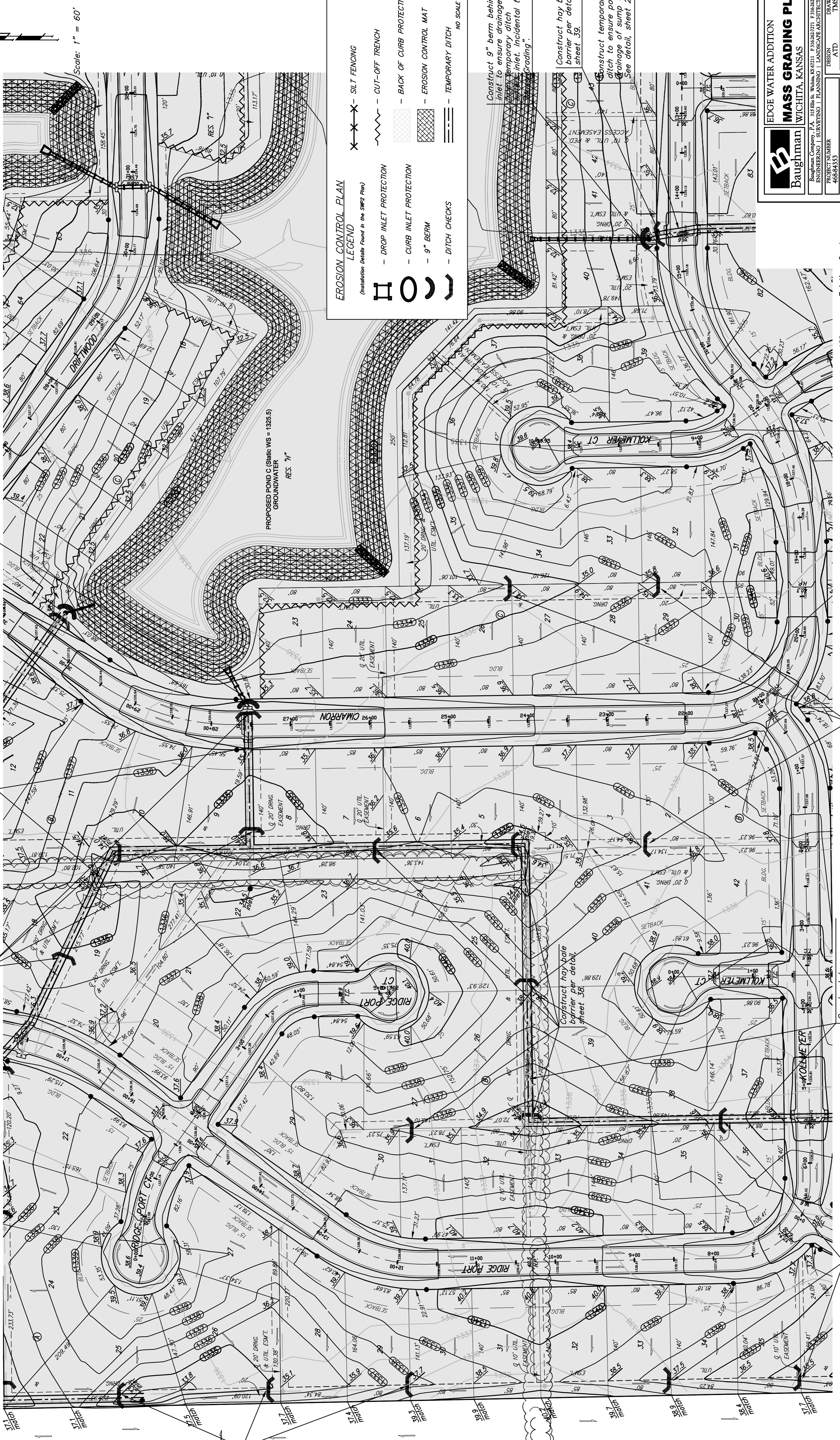
Construct 9" berm behind inlet to ensure drainage from temporary ditch enters inlet. Incidental to "Mass Grading".

Construct temporary ditch to ensure positive drainage of sump areas. See detail, sheet 22.

Construct hay bale barrier per detail, sheet 39.

Construct hay bale barrier per detail, sheet 39.

Construct hay bale barrier per detail, sheet 39.



EROSION CONTROL PLAN
 (Installation Details Found in the SWP2 Plan)

LEGEND

- SILT FENCING
- DROP INLET PROTECTION
- CURB INLET PROTECTION
- 9" BERM
- DITCH CHECKS
- BACK OF CURB PROTECTION
- EROSION CONTROL MAT
- TEMPORARY DITCH
- NO SCALE

Construct 9" berm behind inlet to ensure drainage from temporary ditch enters inlet. Incidental to "Mass Grading".

Construct hay bale barrier per detail, sheet 39.

Construct temporary ditch to ensure positive drainage of sump areas. See detail, sheet 22.

--- 185 --- Existing Grade
 (185) --- Proposed Grade
 --- Area to be graded

Construct hay bale barrier per detail, sheet 39.

Construct temporary ditch to ensure positive drainage of sump areas. See detail, sheet 22.

Construct hay bale barrier per detail, sheet 39.

EDGE WATER ADDITION
MASS GRADING PLAN
Baughman
WICHITA, KANSAS

Engineering Company P.A.C. 1715 E. 15th St. Wichita, KS 67202
 ENGINEERING | SURVEYING | PLANNING | LANDSCAPE ARCHITECTURE

PROJECT NUMBER: 468-54933
 DESIGN: TMS
 DRAWN: TMS
 APPROVED: DATE 08/07
 SCALE: Noted
 SHEET: 20 OF 44

07-03-5839
 EdgeWaterMass2