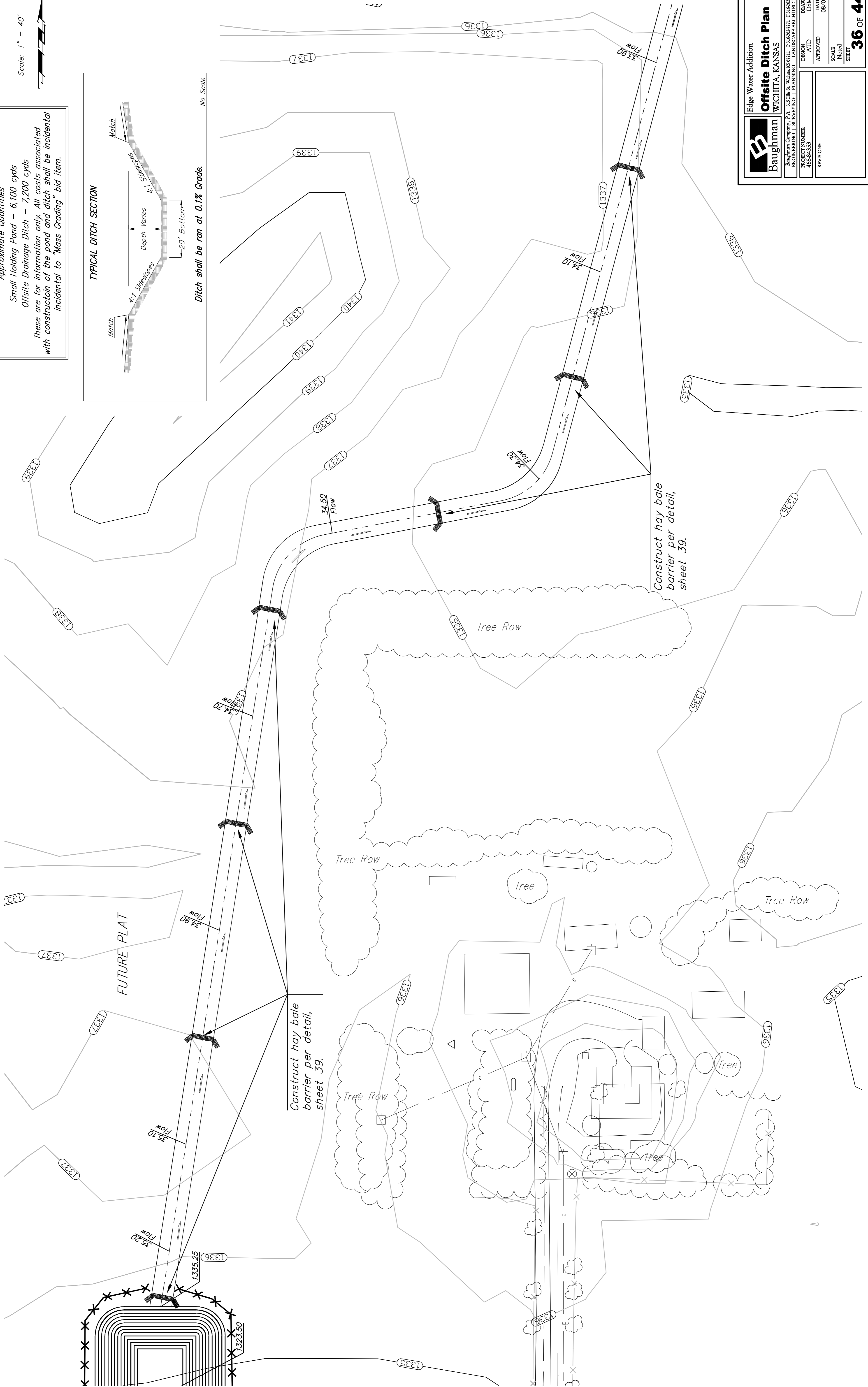
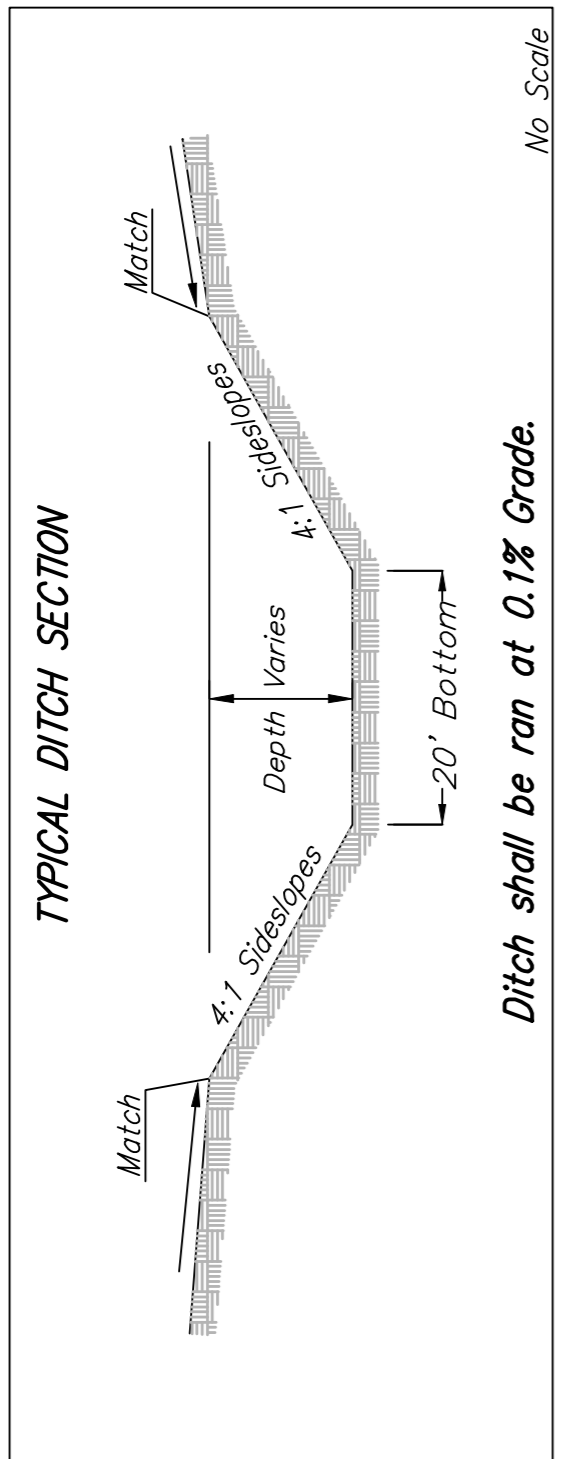


Scale: 1" = 40'



Approximate Quantities
Small Holding Pond - 6,100 cyds
Offsite Drainage Ditch - 7,200 cyds
These are for information only. All costs associated with construction of the pond and ditch shall be incidental to "Mass Grading" bid item.



Construct hay bale barrier per detail, sheet 39.

Construct hay bale barrier per detail, sheet 39.

Edge Water Addition

Baughman **Office Ditch Plan**
WICHITA, KANSAS

Project: Edge Water Addition
 DESIGN: [Blank]
 DRAWN: [Blank]
 PROJECT NUMBER: 408-84333
 APPROVED: [Blank]
 DATE: 08/07
 SCALE: Noted
 SHEET: 36 OF 44

06-10E676
Edgewater Addition