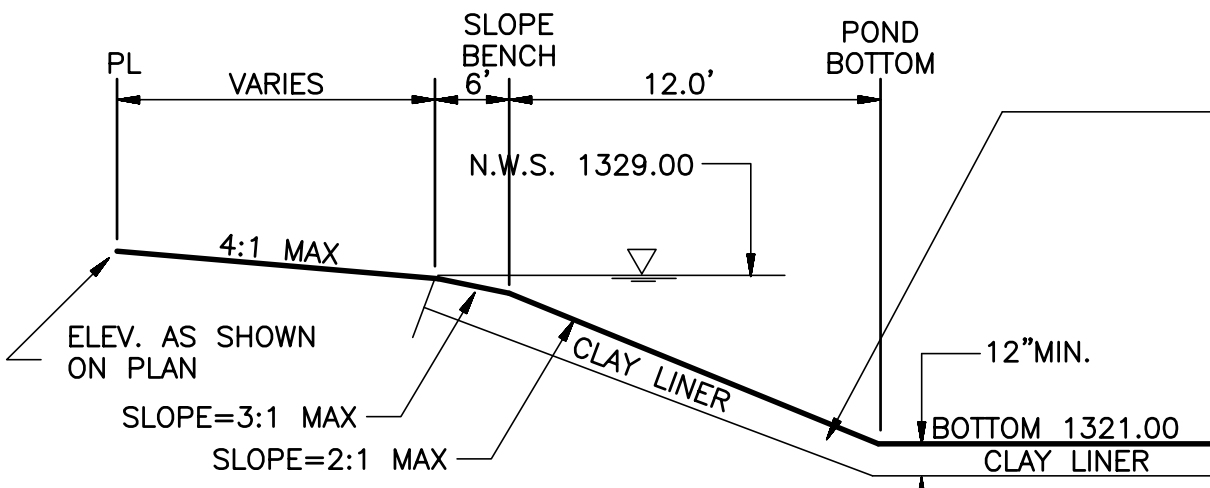
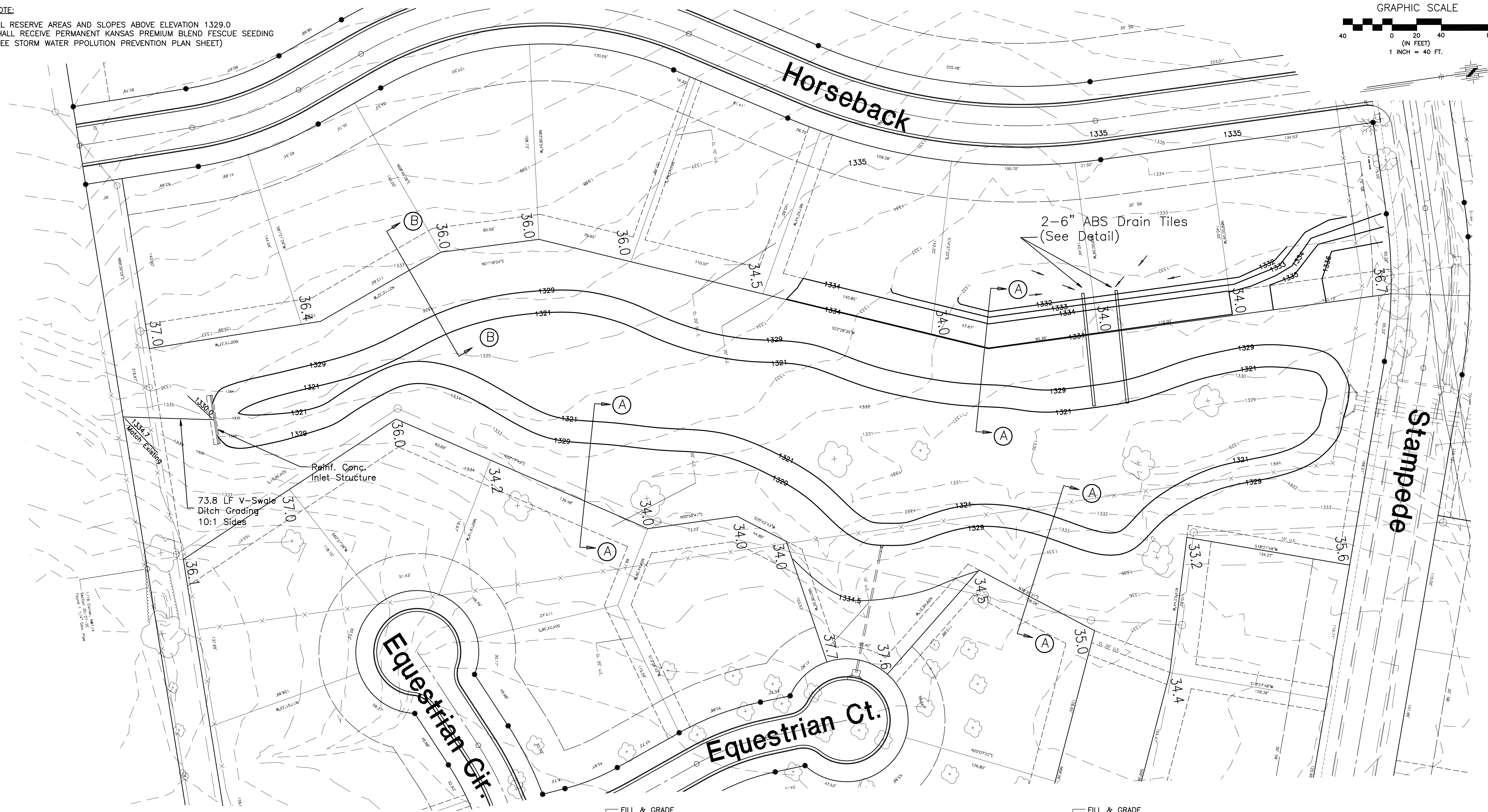
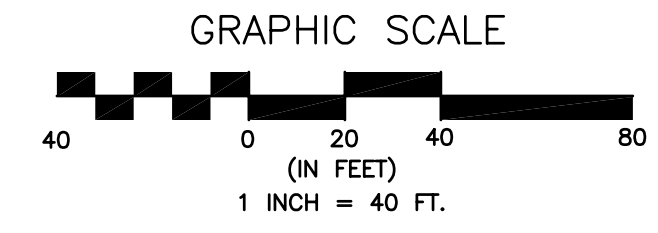
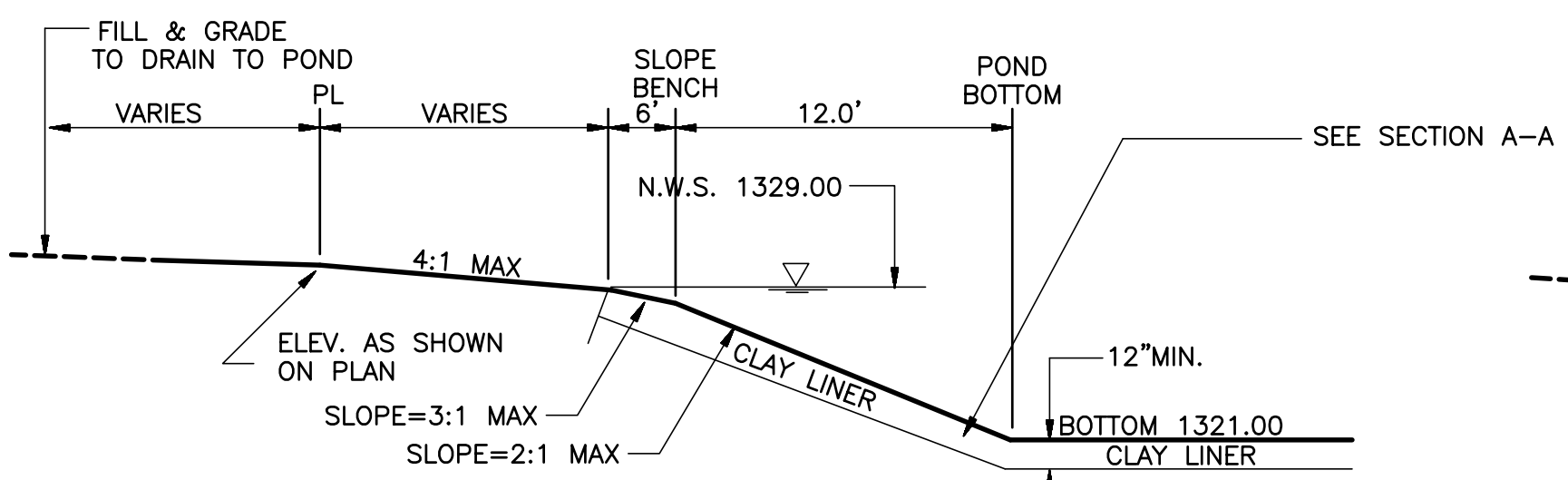


NOTE:
 ALL RESERVE AREAS AND SLOPES ABOVE ELEVATION 1329.0
 SHALL RECEIVE PERMANENT KANSAS PREMIUM BLEND FESCUE SEEDING
 (SEE STORM WATER POLLUTION PREVENTION PLAN SHEET)

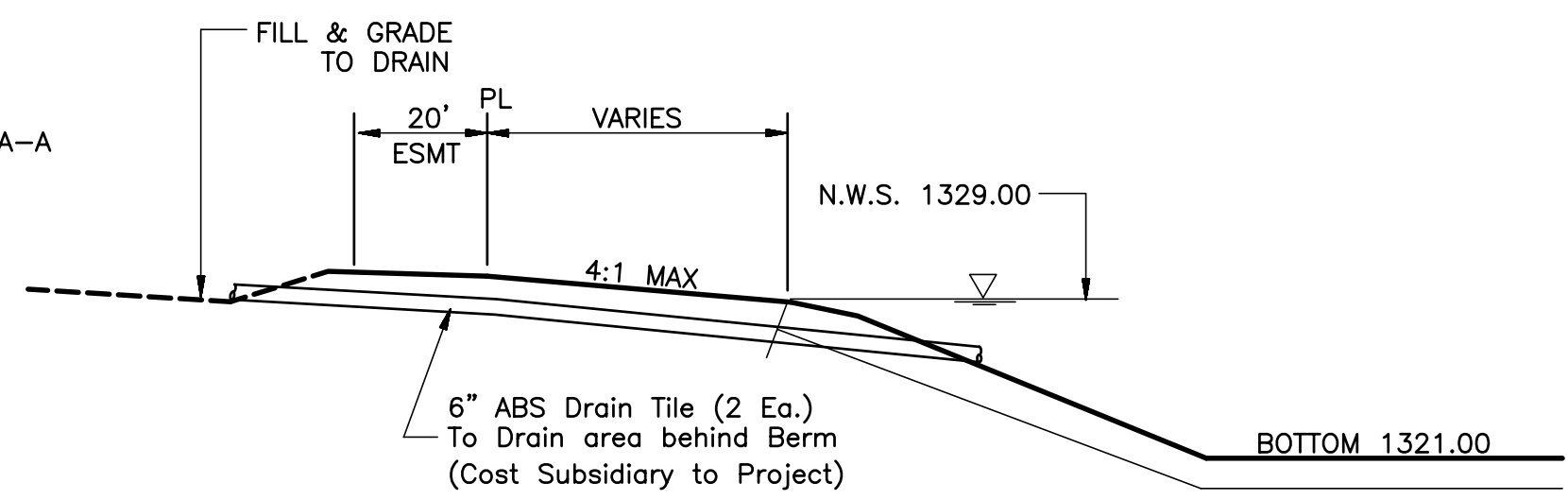


SECTION "A" - "A"

CONSTRUCT 12" MINIMUM THICKNESS CLAY LINER, COMPACT TO ABOVE OPTIMUM MOISTURE CONTENT A MINIMUM OF 95% OF THE MAXIMUM DRY DENSITY AS DETERMINED BY ASTM D 698, STANDARD PROCTOR PROCEDURE. CLAY LINER TO BE CONSTRUCTED WITH SOILS HAVING A PLASTICITY INDEX OF 25 (MIN.) IF SUITABLE MATERIAL IS NOT ON SITE, CONTRACTOR SHALL USE MOST SUITABLE MATERIAL AVAILABLE. PROCTOR AND COMPACTION TESTING SHALL BE BY INDEPENDENT LABORATORY FURNISHED AND PAID FOR BY CONTRACTOR. CONTRACTOR SHALL PROVIDE TESTING REPORTS TO ENGINEER.



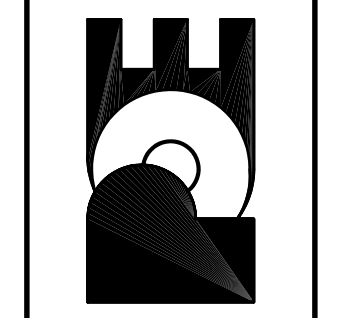
SECTION "B" - "B"



DRAIN TILE DETAIL

No.	Date	By	Approved	Revision

EQUESTRIAN ESTATES ADDITION - PHASE 2
 STORM WATER DRAIN NO. 179
 POND GRADING PLAN
 CITY OF WICHITA, KANSAS
 JAMES L. ARMOUR, P.E. - CITY ENGINEER
 C.O.W. Project # 468-83319 O.C.A. # 75140



POE & ASSOCIATES, INC.
 CONSULTING ENGINEERS
 5940 E. Central, Suite 200 ■ Wichita, KS 67208-4242
 Phone 316/685-1114 ■ FAX 316/685-4444

Designed By: JMU/JPD
 Drawn By: JMU/JPD
 P.O. Job No.: 1694J
 Date: January 2006

FINAL