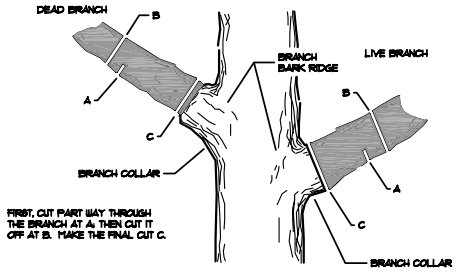
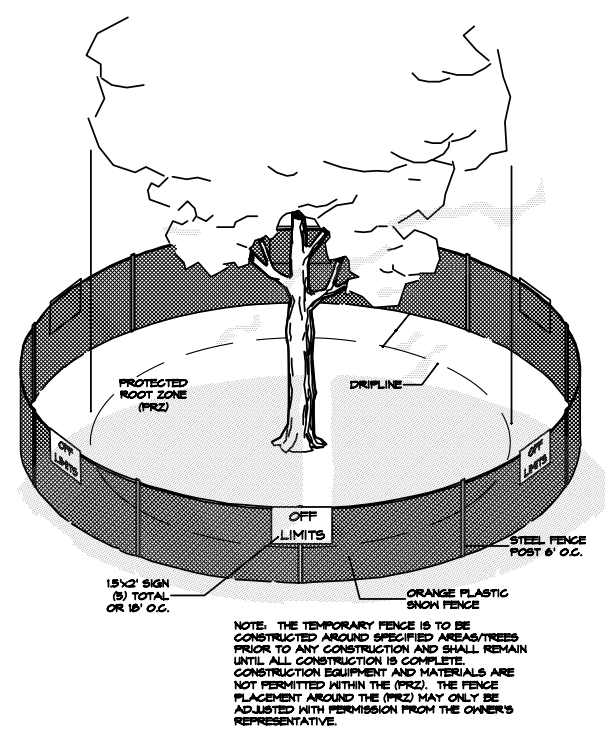
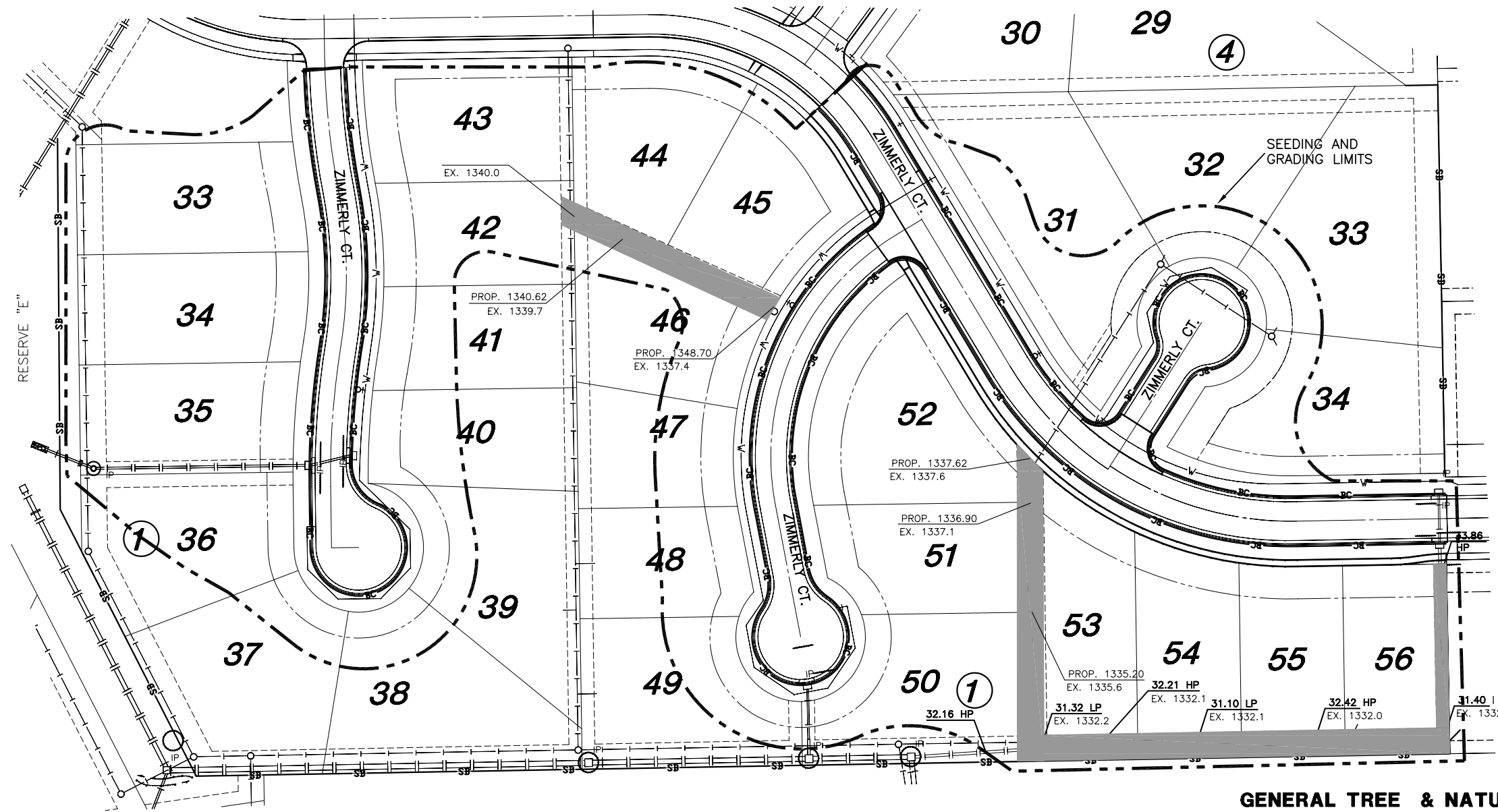
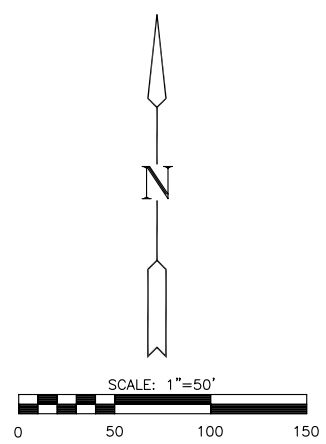
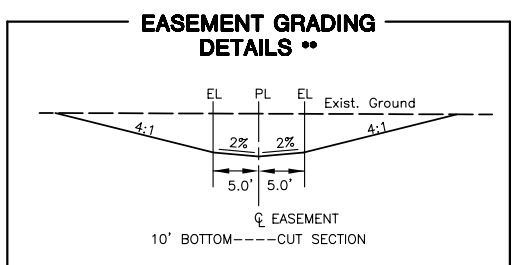


**WOODLAND LAKES 3RD & 4TH  
ZIMMERLY PHASE**



**GENERAL TREE & NATURAL AREA PROTECTION NOTES:**

- TREES ARE AN IMPORTANT ASSET TO THE DEVELOPER. EVERY EFFORT SHALL BE MADE TO PRESERVE EACH AND EVERY TREE (UNLESS NOTED FOR REMOVAL) AS DIRECTED IN THESE PLANS & NOTES.
- BEFORE ANY TYPE OF CONSTRUCTION BEGINS WITHIN THE PROJECT IMPROVEMENT AREA THE CONTRACTOR SHALL INSTALL PROTECTION FENCE AROUND ALL TREE MASSES AND INDIVIDUAL TREES AS NOTED IN PLANS. ALL TREE REMOVAL SHALL BE DISCUSSED AND APPROVED BY THE OWNER'S REPRESENTATIVE PRIOR TO COMMENCEMENT.
- EQUIPMENT AND CONSTRUCTION MATERIALS SHALL REMAIN OUT OF AND AWAY FROM TREE DRIFLINES SO AS TO NOT COMPACT THE ROOT ZONE OR DAMAGE THE TREE (REFER TO DETAIL: THIS SHEET). CHEMICAL SPILL DAMAGE SHALL BE PREVENTED BY FILLING GAS TANKS, CLEANING TOOLS & REPAIRING EQUIPMENT WELL OUTSIDE TREE PROTECTED ROOT ZONES. MIXING TRUCKS SHALL BE RINSED OUT OFF SITE. WHERE IT OCCURS THAT A CONSTRUCTION ROUTE OR A PROPOSED IMPROVEMENT OCCURS WITHIN A TREE'S PROTECTED ROOT ZONE, IT MAY BE NECESSARY, DEPENDENT UPON THE TYPE OF CONSTRUCTION AND EQUIPMENT USED, TO INSTALL A ROOT PROTECTION BRIDGE OR APPROVED EQUIVALENT. THIS MAY BE DETERMINED IN THE FIELD AT THE DIRECTION OF THE OWNER'S REPRESENTATIVE.
- ANY TREE THAT MUST HAVE BRANCHES REMOVED SHALL BE TRIMMED WITH SHARP INSTRUMENT/TOOL THAT IS INTENDED FOR SUCH OPERATIONS. CONSULT LANDSCAPE ARCHITECT PRIOR TO TRIMMING. KNOCKING BRANCHES OFF WITH A BACKHOE OR OTHER SIMILAR MACHINE IS NOT ACCEPTABLE! REFER TO TREE TRIMMING DETAIL ON THIS SHEET FOR TRIMMING PROCEDURE.
- FAILURE TO MAINTAIN ERECTED TREE PROTECTION FENCE AROUND DESIGNATED AREAS WITHOUT PRIOR REMOVAL CONSENT FROM THE OWNER'S REPRESENTATIVE IS STRICTLY PROHIBITED. ALL WORK SHALL HALT UNTIL REMEDIED SHOULD ANY PROTECTION FENCE BE REMOVED, MOVED, OR DEVIATIONS FROM THESE NOTES ARE OBSERVED BY THE OWNER'S REPRESENTATIVE (THIS INCLUDES TREES WHERE NO FENCE IS REQUIRED).
- ALL COMPACTION OF EARTHWORK SHALL BE 95% STANDARD DENSITY.
- OTHER CONSTRUCTION MAY BE UNDER WAY SIMULTANEOUSLY WITH THIS PROJECT. THE CONTRACTOR SHALL COORDINATE WITH ANY CONTRACTORS CONSTRUCTING OTHER PORTIONS OF THE PROJECT.
- EXCESS EXCAVATION SHALL BE STOCKPILED ON-SITE IN A LOCATION APPROVED BY THE FIELD ENGINEER.



**LEGEND**

○ IP	AREA INLET PROTECTION
— IP —	CURB INLET PROTECTION
— SB —	SILT BARRIER
— BC —	BACK OF CURB PROTECTION
— W —	PROPOSED WATER LINE
— S —	PROPOSED SANITARY SEWER LINE
— 200 —	EXISTING CONTOURS
— 200 —	PROPOSED CONTOURS
— — —	LIMITS OF GRADING

**EROSION PLAN**  
SHEET TITLE  
472-83718  
PROJECT NUMBER

DESIGN BY: SRS  
DRAWN BY: KWS  
CHECKED BY: GJA

ISSUED: AUGUST 2006  
REVISED:

SHEET NO.  
**19 of 36**