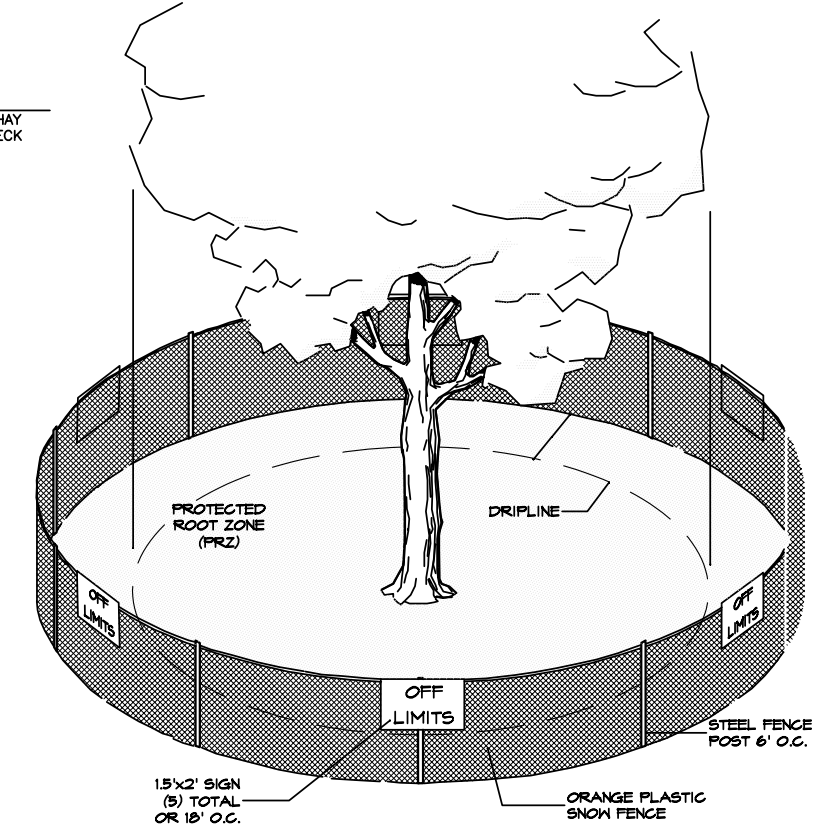
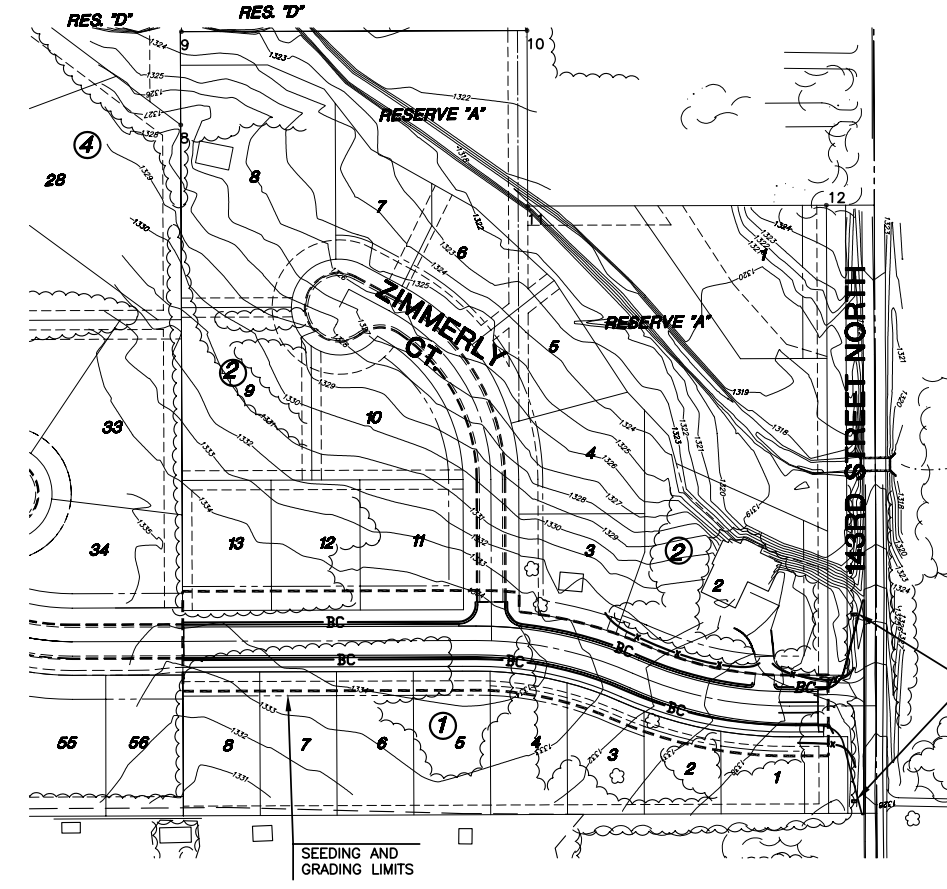
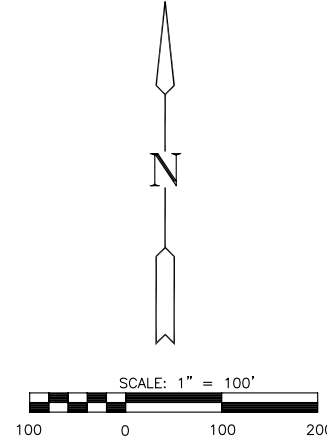


**GENERAL TREE & NATURAL
AREA PROTECTION NOTES:**

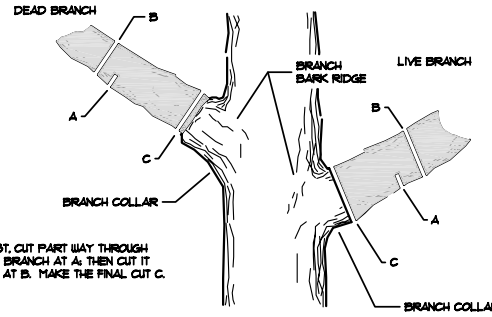
1. TREES ARE AN IMPORTANT ASSET TO THE DEVELOPER. EVERY EFFORT SHALL BE MADE TO PRESERVE EACH AND EVERY TREE (UNLESS NOTED FOR REMOVAL) AS DIRECTED IN THESE PLANS & NOTES.
2. BEFORE ANY TYPE OF CONSTRUCTION BEGINS WITHIN THE PROJECT IMPROVEMENT AREA THE CONTRACTOR SHALL INSTALL PROTECTION FENCE AROUND ALL TREE MASSES AND INDIVIDUAL TREES AS NOTED IN PLANS. ALL TREE REMOVAL SHALL BE DISCUSSED AND APPROVED BY THE OWNER'S REPRESENTATIVE PRIOR TO COMMENCEMENT.
3. EQUIPMENT AND CONSTRUCTION MATERIALS SHALL REMAIN OUT OF AND AWAY FROM TREE DRIPLINES SO AS TO NOT COMPACT THE ROOT ZONE OR DAMAGE THE TREE (REFER TO DETAIL THIS SHEET). CHEMICAL SPILL DAMAGE SHALL BE PREVENTED BY FILLING GAS TANKS, CLEANING TOOLS & REPAIRING EQUIPMENT WELL OUTSIDE TREE PROTECTED ROOT ZONES. MIXING TRUCKS SHALL BE RINSED OUT OF SITE. WHERE IT OCCURS THAT A CONSTRUCTION ROUTE OR A PROPOSED IMPROVEMENT OCCURS WITHIN A TREE'S PROTECTED ROOT ZONE, IT MAY BE NECESSARY, DEPENDENT UPON THE TYPE OF CONSTRUCTION AND EQUIPMENT USED, TO INSTALL A ROOT PROTECTION BRIDGE OR APPROVED EQUIVALENT. THIS MAY BE DETERMINED IN THE FIELD AT THE DIRECTION OF THE OWNER'S REPRESENTATIVE.
4. ANY TREE THAT MUST HAVE BRANCHES REMOVED SHALL BE TRIMMED WITH SHARP INSTRUMENT/TOOL THAT IS INTENDED FOR SUCH OPERATIONS. CONSULT LANDSCAPE ARCHITECT PRIOR TO TRIMMING. KNOCKING BRANCHES OFF WITH A BACKHOE OR OTHER SIMILAR MACHINE IS NOT ACCEPTABLE! REFER TO TREE TRIMMING DETAIL ON THIS SHEET FOR TRIMMING PROCEDURE.
5. FAILURE TO MAINTAIN ERECTED TREE PROTECTION FENCE AROUND DESIGNATED AREAS WITHOUT PRIOR REMOVAL CONSENT FROM THE OWNER'S REPRESENTATIVE IS STRICTLY PROHIBITED. ALL WORK SHALL HALT UNTIL REMEDIED SHOULD ANY PROTECTION FENCE BE REMOVED, MOVED, OR DEVIATIONS FROM THESE NOTES ARE OBSERVED BY THE OWNER'S REPRESENTATIVE (THIS INCLUDES TREES WHERE NO FENCE IS REQUIRED).
6. ALL COMPACTION OF EARTHWORK SHALL BE 95% STANDARD DENSITY.
7. OTHER CONSTRUCTION MAY BE UNDER WAY SIMULTANEOUSLY WITH THIS PROJECT. THE CONTRACTOR SHALL COORDINATE WITH ANY CONTRACTORS CONSTRUCTING OTHER PORTIONS OF THE PROJECT.
8. EXCESS EXCAVATION SHALL BE STOCKPILED ON-SITE IN A LOCATION APPROVED BY THE FIELD ENGINEER.



NOTE: THE TEMPORARY FENCE IS TO BE CONSTRUCTED AROUND SPECIFIED AREAS/TREES PRIOR TO ANY CONSTRUCTION AND SHALL REMAIN UNTIL ALL CONSTRUCTION IS COMPLETE. CONSTRUCTION EQUIPMENT AND MATERIALS ARE NOT PERMITTED WITHIN THE (PRZ). THE FENCE PLACEMENT AROUND THE (PRZ) MAY ONLY BE ADJUSTED WITH PERMISSION FROM THE OWNER'S REPRESENTATIVE.

LEGEND

- x—x—x— TREE PROTECTION FENCE
- BC— BACK OF CURB PROTECTION
- BC— BACK OF CURB PROTECTION
- W— PROPOSED WATER LINE
- S—S—S— PROPOSED SANITARY SEWER LINE
- 200— EXISTING CONTOURS
- · · · · · SEEDING AND GRADING LIMITS



2 TREE TRIMMING DETAIL
SCALE: N.T.S.

1 TEMPORARY TREE PROTECTION DETAIL
SCALE: N.T.S.

**WATER DISTRIBUTION PLANS
WOODLANDS LAKES ESTATES
THIRD & FOURTH ADD.
ZIMMERLY ENTRY PHASE**

EROSION PLAN
SHEET TITLE
472-83719
PROJECT NUMBER

DESIGN BY: SRS
DRAWN BY: DM
CHECKED BY: SRS

ISSUED: AUGUST 2006
REVISED:

SHEET NO.
10 of 17