

PRIVATE STORM SEWER AND RECONSTRUCTION SANITARY SEWER

HANGAR 16 REHAB, MID-CONTINENT AIRPORT PRIVATE PROJECT NUMBER 1769 PPS (607861)

As Built Plans
Contractor: Tri-State Plumbing
Inspector: Don Eddingfield, Baughman Co.
pdf's by: KEK, 3/24/08

GENERAL NOTES

- Contractor will be required to provide a minimum advance notice of forty-eight (48) hours to utility companies prior to starting any excavation as follows:

Kansas One-Call 687-2470

The Contractor must notify the following in case of an emergency:

Cox Communications	262-0661
Kansas Gas Service	383-8600
Southwestern Bell Telephone Company	1-800-286-8313
City of Wichita Water Department	262-6000
City of Wichita Sewer Maintenance	262-6000
Level 3 Communications	264-9220
Wichita Airport Authority (WAA)	946-4700

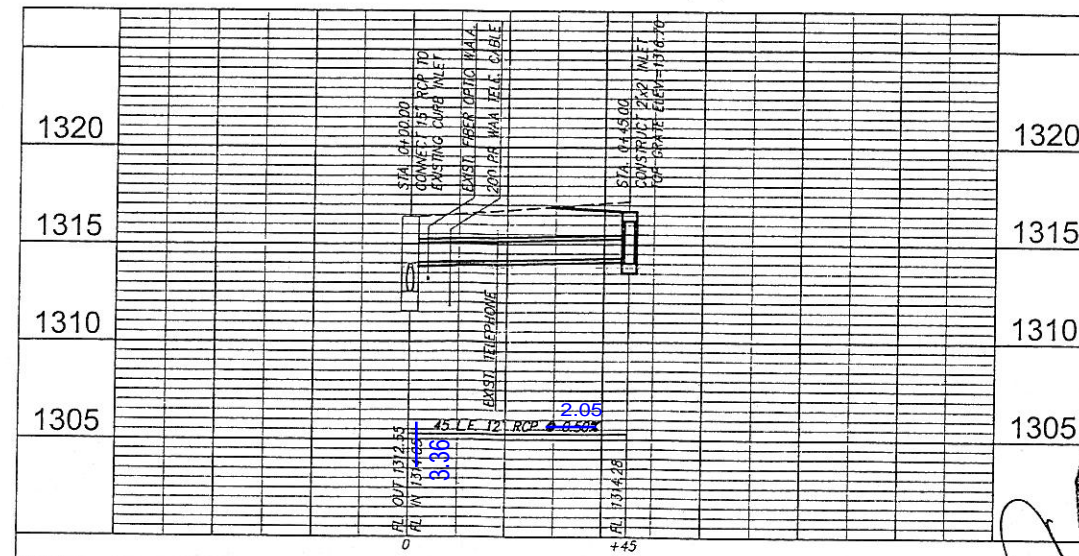
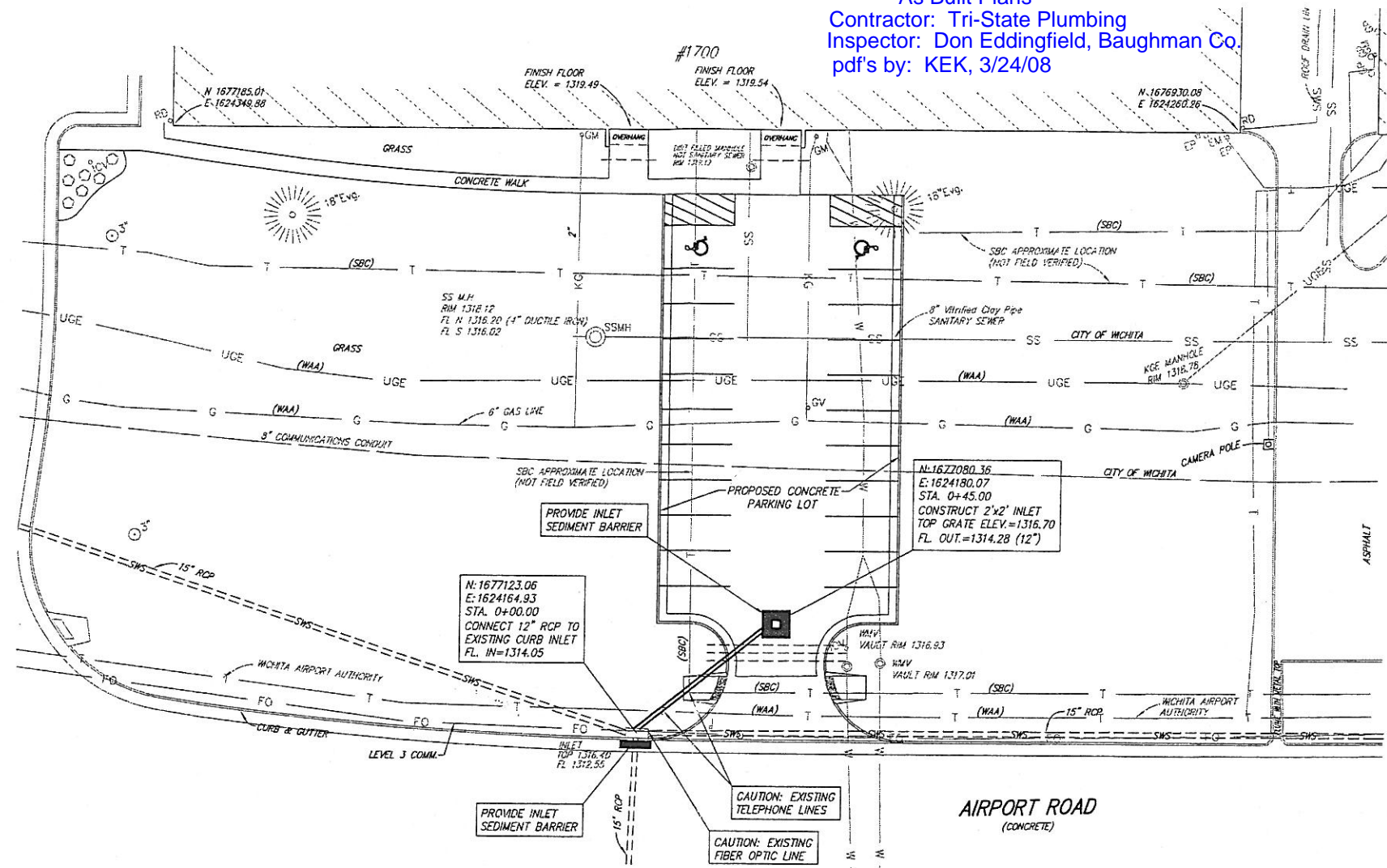
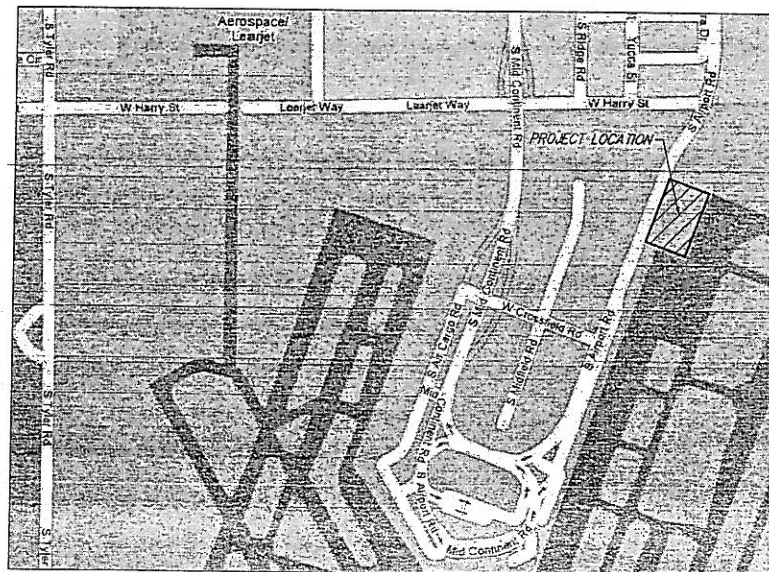
- Existing utilities and their location, as shown on the plans, represent the best information obtainable for design. Location information has been obtained from the various utility companies and is either from company record drawings or company-provided field locations. The Contractor will be required to work around existing utilities which do not conflict with proposed construction.
- Trench backfill to be compacted in accordance with section 801 of the Airport Specifications.
- Maintain traffic on Airport Rd. at all times during construction and install all traffic control in accordance with the manual of uniform traffic control devices.

HORIZONTAL CONTROL - AIRPORT GRID SYSTEM

PT #303
#4 BAR 5' NORTH OF EAST GATE POST
NEAR THE CENTERLINE OF HARRY STREET (REMOVED)
150'± EAST OF TAXIWAY "H" AND 1630' SOUTH OF PUEBLO DR.
N 1677904.69
E 1625478.84

PT #304
#4 BAR 60' EAST OF SECURITY FENCE EAST SIDE
OF TAXIWAY "H", ON LINE WITH 2-BLUE TAHLIGHTS TO THE WEST
89.3' SE OF A FENCE LINE BRACE POST, 920'± SOUTH
OF PUEBLO DR.
N 1678607.93
E 1625484.52

PT #305
#4 BAR 5' NORTH AND 5' EAST OF SECURITY FENCE CORNER AT
NORTH END TAXIWAY "H" 30'± SOUTH OF CENTERLINE PUEBLO DR.
N 1679498.82
E 1625445.40



INDEX OF SHEETS

- INDEX SHEET/SANITARY SEWER PLAN & PROFILE
- PAVEMENT GRADING (FOR REFERENCE)
- INLET DETAILS
- EROSION CONTROL DETAILS
- EROSION CONTROL DETAILS
- EROSION CONTROL DETAILS
- SANITARY SEWER PLAN & PROFILE

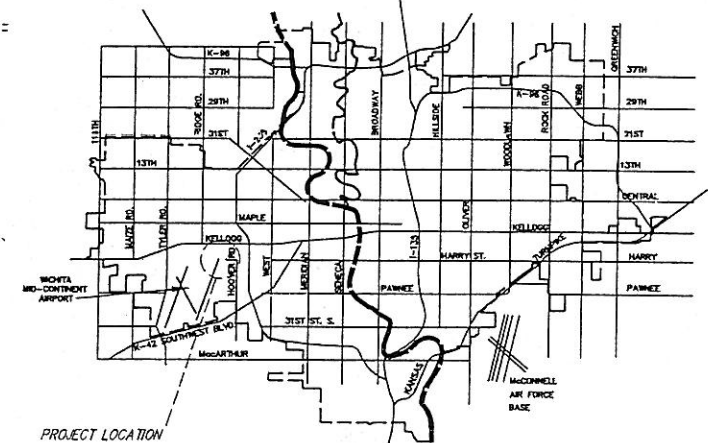
BENCHMARKS

BENCH MARK: CHISELED "X" ON WEST TOP OF CURB OF AIRPORT ROAD 38' SOUTH OF LIGHT POLE
ELEVATION = 1315.73 (N.G.V.D. 1929)
N 1677588.22
E 1624401.63

APPROVED AS NOTED
BY CITY ENGINEER OF WICHITA

Sanitary Sewers _____
Storm Sewers SEA 2-22-08
Driveway Approaches _____
Water Mains _____
Paving _____

Inspection by Wichita Airport Authority.
(Baughman Co., P.A.)



SCALE: 1"=20'
1"=5' (VERT.)

CHRISTOPHER MICHAEL BOHM
LICENSED PROFESSIONAL ENGINEER
KANSAS
17631

CITY OF WICHITA, KANSAS
JAMES L. ARMOUR, P.E., CITY ENGINEER

HANGAR 16, MID-CONTINENT AIRPORT
STORM SEWER PLAN & PROFILE
WICHITA, KANSAS

Ruggles & Bohm, P.A.
Engineering, Surveying, Land Planning

924 North Main (316) 264-8008
Wichita, Kansas 67203 (316) 264-4621 fax
www.rbkansas.com E-mail: info@rbkansas.com

DESIGN	TCR	DATE	3/12/08
DRAWN	EJB	SHEET	1
REVIEW		OF	7
UTILITY			

DRAWING FILE: Eng. Base [Grading]
PROJECT NUMBER: 1769
DATE: June 12, 2007

GENERAL NOTES

PRIVATE STORM SEWER AND RECONSTRUCTION SANITARY SEWER

HANGAR 16 REHAB, MID-CONTINENT AIRPORT PRIVATE PROJECT NUMBER 1769 PPS (607861)

1. Contractor will be required to provide a minimum advance notice of fourty-eight (48) hours to utility companies prior to starting any excavation as follows:

Kansas One-Call 687-2470

The Contractor must notify the following in case of an emergency:

Cox Communications 262-0661
 Kansas Gas Service 383-8600
 Westar 383-8600
 Aquila Energy 1-800-303-0357
 Southwestern Bell Telephone Company 1-800-286-8313
 City of Wichita Water Department 262-6000
 City of Wichita Sewer Maintenance 262-6000

2. Existing utilities and their location, as shown on the plans, represent the best information obtainable for design. Location information has been obtained from the various utility companies and is either from company record drawings or company-provided field locations. The Contractor will be required to work around existing utilities within the right-of-way which do not conflict with proposed construction.

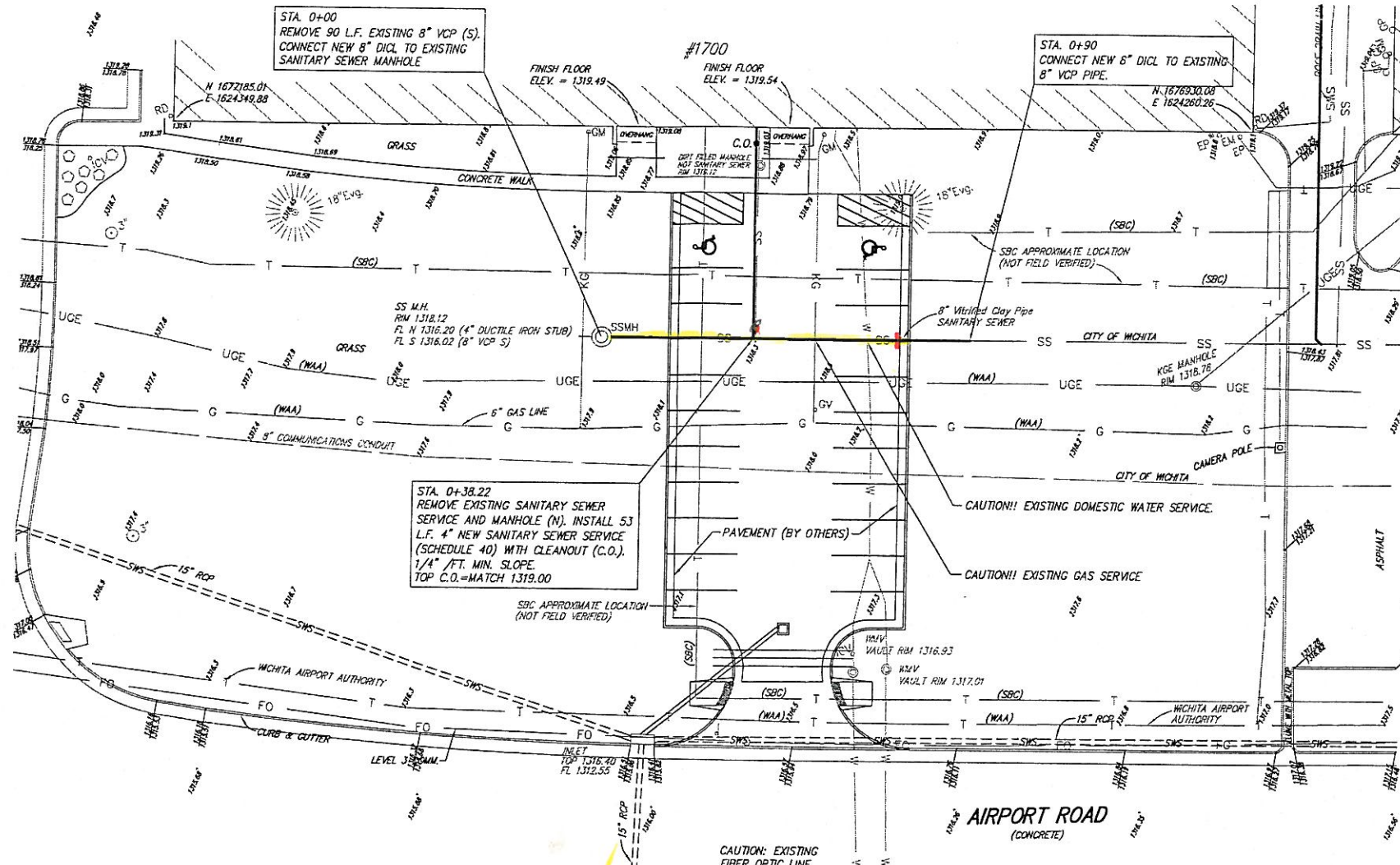
3. This project is to be constructed in accordance with City of Wichita Standard Specifications for the Construction of City Projects, and Policy on Construction of Public Works Improvements by Private Contract.

4. No work shall begin on this project before required bonds are submitted to the City of Wichita, and the project inspector has been notified.

5. All areas of public R/W disturbed by construction of this project are to be restored in accordance with Administrative Regulation AR 78 of the City of Wichita.

6. Sewage flow in the existing sanitary sewer shall be maintained at all times. The Contractor's plan for maintaining flow shall be submitted and approved by the Engineer prior to beginning work on the project.

7. Traffic will not be affected by this project.



APPROVED AS NOTED
 BY CITY ENGINEER OF WICHITA

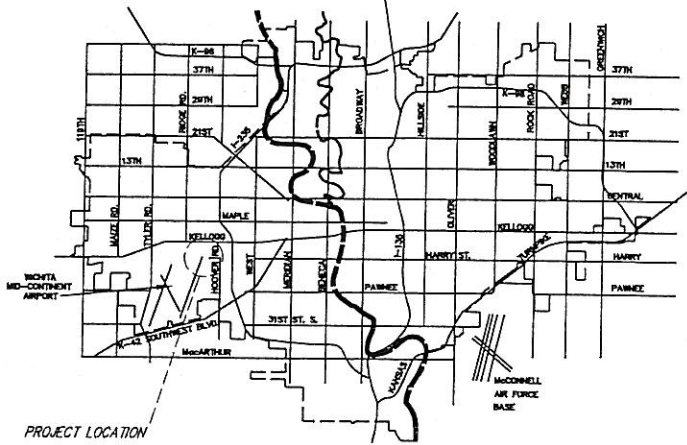
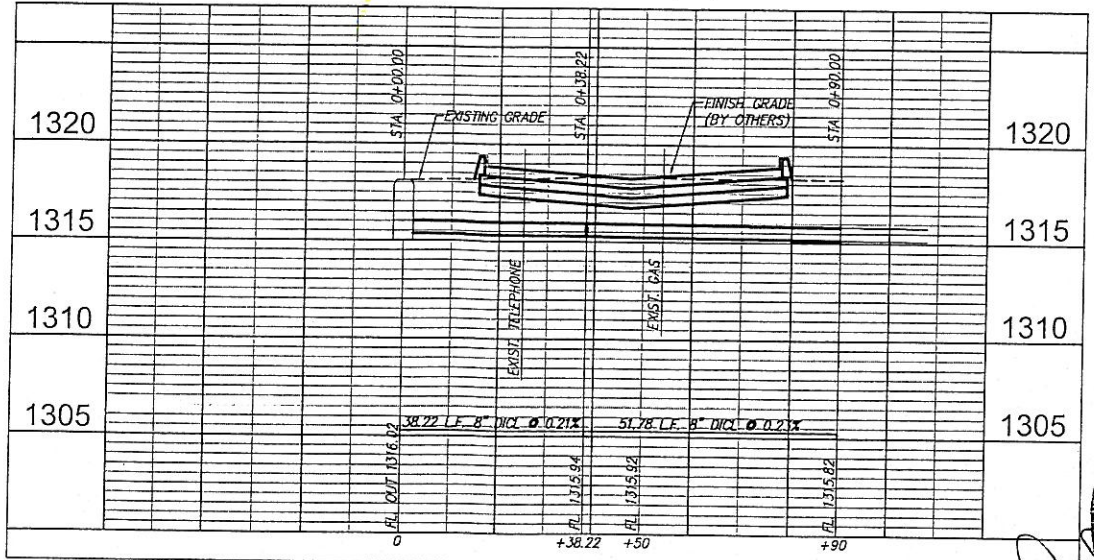
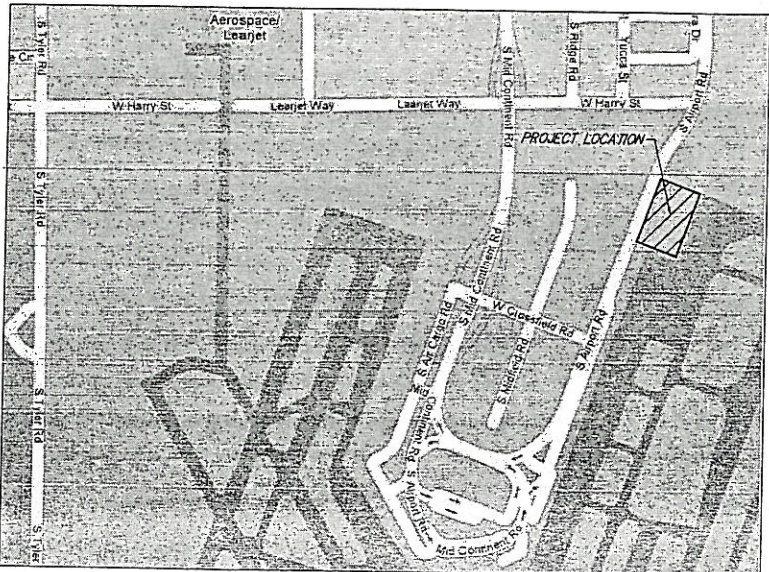
Sanitary Sewers *LCJ 2-22-08*
 Storm Sewers _____
 Driveway Approaches _____
 Water Mains _____
 Paving _____

Inspection by Wichita Airport Authority
 (Baughman Co. P.A.)

HORIZONTAL CONTROL - AIRPORT GRID SYSTEM
 PT #303
 #4 BAR 5' NORTH OF EAST GATE POST
 NEAR THE CENTERLINE OF HARRY STREET (REMOVED)
 150'± EAST OF TAXIWAY "H" AND 1630' SOUTH OF PUEBLO DR.
 N 1677904.69
 E 1625478.84

PT #304
 #4 BAR 60' EAST OF SECURITY FENCE EAST SIDE
 OF TAXIWAY "H", ON LINE WITH 2-BLUE TAXIWAYS TO THE WEST
 89.3' SE OF A FENCE LINE BRACE POST, 920'± SOUTH
 OF PUEBLO DR.
 N 1678607.93
 E 1625484.52

PT #305
 #4 BAR 5' NORTH AND 5' EAST OF SECURITY FENCE CORNER AT
 NORTH END TAXIWAY "H" 30'± SOUTH OF CENTERLINE PUEBLO DR.
 N 1679498.82
 E 1625445.40



SCALE: 1"=20'
 1"=5' (VERT.)

RB
 CHRISTOPHER MICHAEL BOHM
 LICENSED PROFESSIONAL ENGINEER
 #1631
 2/22/08

CITY OF WICHITA, KANSAS
JAMES L. ARMOUR, P.E., CITY ENGINEER

HANGAR 16, MID-CONTINENT AIRPORT
 SANITARY SEWER PLAN & PROFILE
 WICHITA, KANSAS

Ruggles & Bohm, P.A.
 Engineering, Surveying, Land Planning
 924 North Main
 Wichita, Kansas 67203
 www.rbkansas.com
 (316) 264-8008
 (316) 264-4621 fax
 E-mail: info@rbkansas.com

DRAWING FILE: Eng. Base [SS COVER] PROJECT NUMBER: _____

DESIGN	TCR
DRAWN	EJB
REVIEW	
UTILITY	
DATE	Feb. 22, 2008
SHEET	7
OF	7