

Benchmarks:

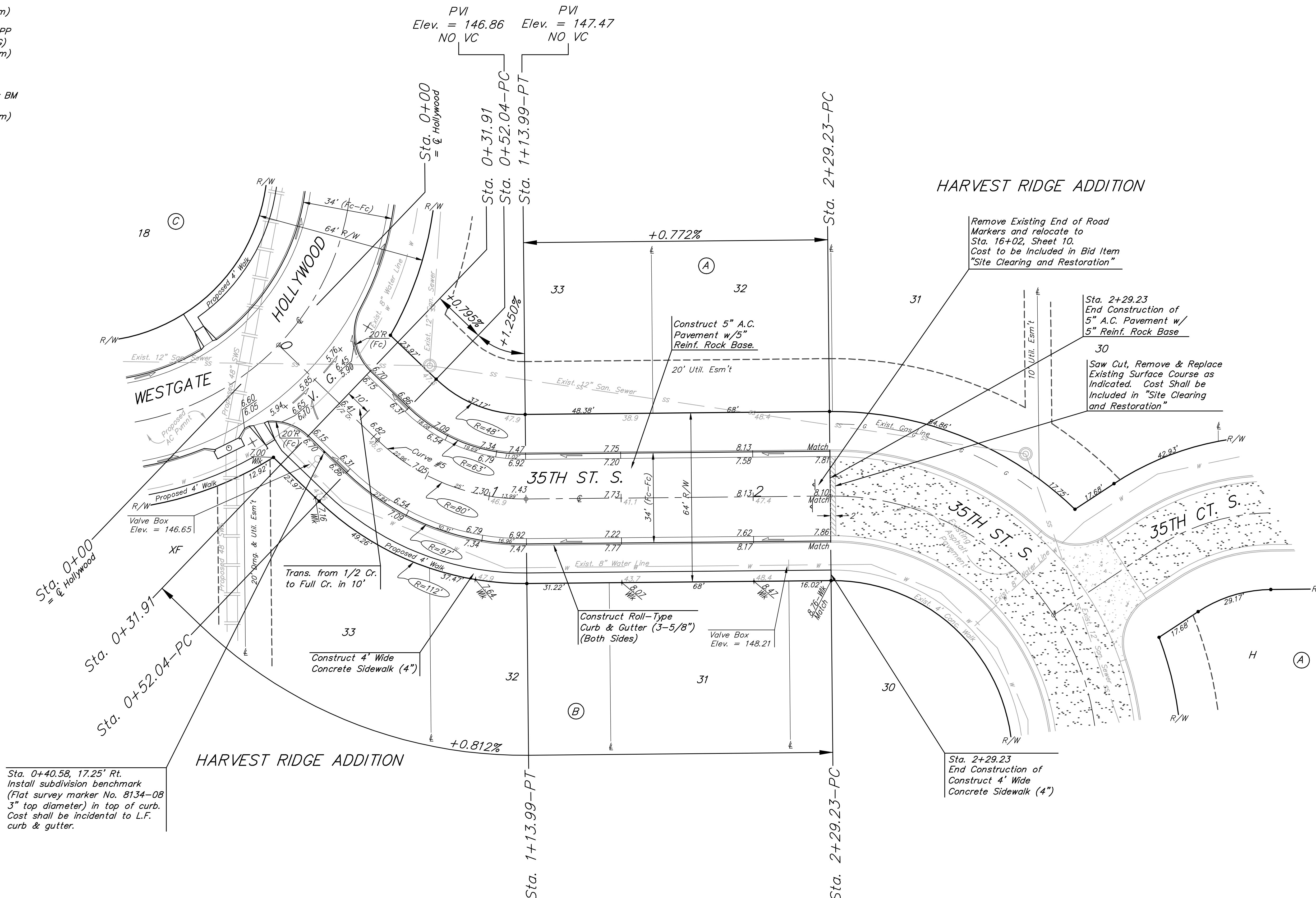
BM #1: Small RR spike in 2nd PP north of K-42 Highway, west side of Maize
Elev. = 143.61 (City Datum)

BM #2: Small RR spike in PP east of East 1/4 Corner (G)
Elev. = 147.00 (City Datum)

BM #3: "□" Top Headwall southeast corner K-42 Highway and Maize (County BM with City Datum)
Elev. = 144.04 (City Datum)



Scale: 1" = 20'
• = Iron



Sta. 0+40.58, 17.25' Rt.
Install subdivision benchmark (Flat survey marker No. 8134-08 3" top diameter) in top of curb. Cost shall be incidental to L.F. curb & gutter.

Remove Existing End of Road Markers and relocate to Sta. 16+02, Sheet 10. Cost to be Included in Bid Item "Site Clearing and Restoration"

Sta. 2+29.23
End Construction of 5" A.C. Pavement w/ 5" Reinf. Rock Base

Saw Cut, Remove & Replace Existing Surface Course as Indicated. Cost Shall be Included in "Site Clearing and Restoration"

Sta. 2+29.23
End Construction of Construct 4' Wide Concrete Sidewalk (4")

Roll type curb & gutter to be constructed on the pavement on this sheet. Top of curb elevation are given for full height curb.

Curve #5
Curve Data Based on Centerline
Rad. = 80' Delta = 44° 22' 14" Tangent = 32.62'
Arc = 61.95' L.C. = 60.42' Def./ft. = 21.48695 Min.

Station	Arc	FACE CHORD LENGTHS		Defl.	T. Defl.
		8 Lt.	8 Rt.		
0+52.04	-	-	-	0°00'00"	0°00'00"
0+75.00	22.96'	15.73'	30.03'	8°13'20"	8°13'20"
1+00.00	25.00'	17.12'	32.68'	8°57'10"	17°10'31"
1+13.99	13.99'	9.61'	18.34'	5°00'36"	22°11'07"

	Harvest Ridge Addition - Phase II	
	35TH STREET	
STA. 0+00 STA. 2+29.23		
Baughman Company, P.A. 315 Ellis St. Wichita, KS 67211 P 316262-7271 F 316262-0149		
ENGINEERING SURVEYING PLANNING LANDSCAPE ARCHITECTURE		
PROJECT NUMBER 472-83805	DESIGN MWS/JAK	DRAWN JAK
APPROVED MWS	DATE 4/12/06	
REVISIONS:	SCALE Noted	
	SHEET 11 OF 34	