

Benchmarks:

BM #1: Small RR spike in 2nd PP north of K-42 Highway, west side of Maize
Elev. = 143.61 (City Datum)

BM #2: Small RR spike in PP east of East 1/4 Corner (G)
Elev. = 147.00 (City Datum)

BM #3: "□" Top Headwall southeast corner K-42 Highway and Maize (County BM with City Datum)
Elev. = 144.04 (City Datum)

Pond Data:
Static WS Elev. = 139.0 City Datum
100-yr Design WS Elev. = 143.4 City Datum
Peak Pond Discharge = 45 cfs
Peak Pond Inflow = 615 cfs

RESERVE "A"

Existing pond

HARVEST RIDGE ADDITION

Sta. 0+05.0, Line 1
Begin Construction of 48" RCP w/ 48" Reinf. Concrete Headwall and 46 S.Y. light stone rip-rap.

XF
Sta. 1+86.5, Line 1
Const. Std Type-1A Double Curb Inlet. (10' x 3')
Top Elev. = 146.63

CAUTION!
8" Wtr Line Crossing

Sta. 1+86.5 to Sta. 2+48.2
Install 61.7 L.F. Flowable Fill Per City Specifications.
Fill to Elev. 142.90

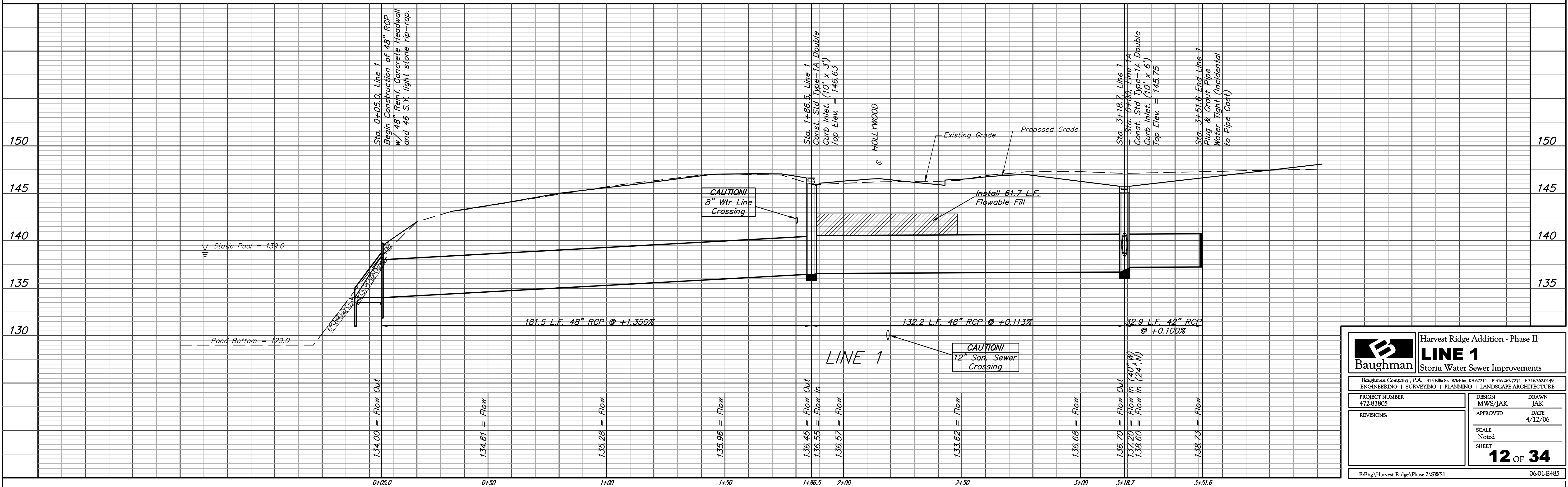
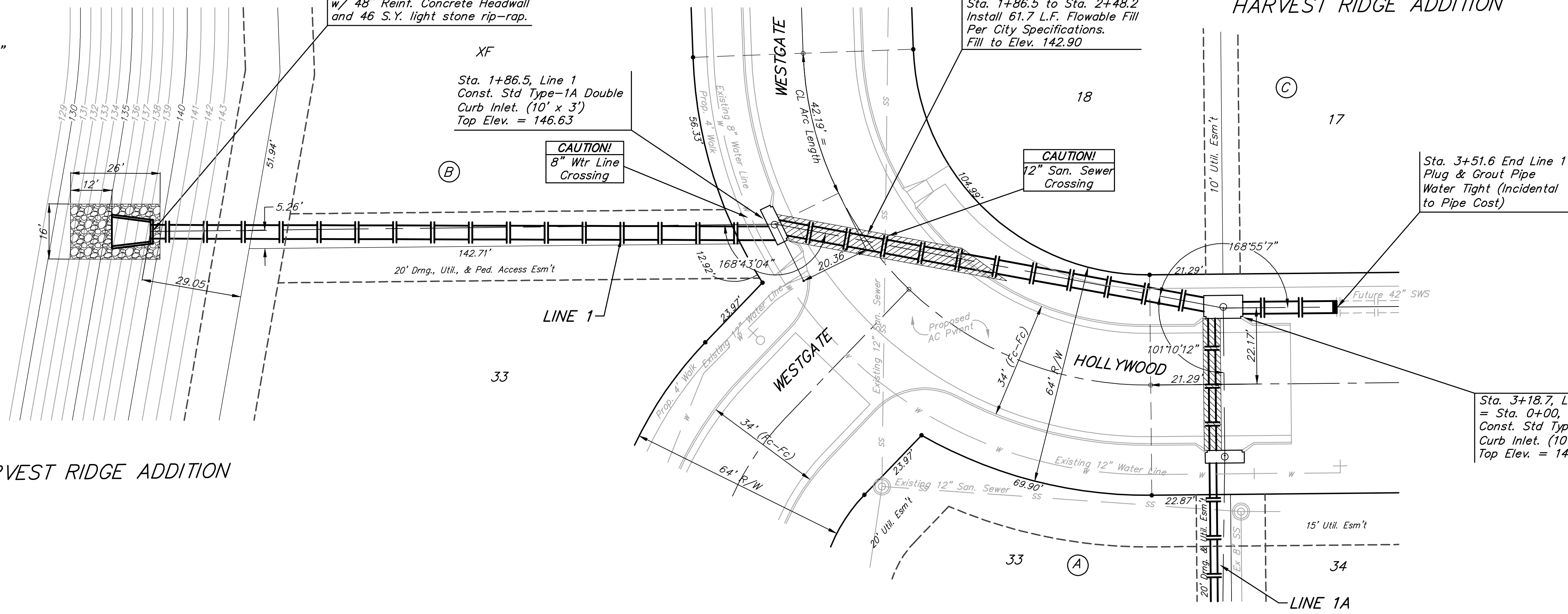
CAUTION!
12" San. Sewer Crossing

HARVEST RIDGE ADDITION

Sta. 3+51.6 End Line 1
Plug & Grout Pipe Water Tight (Incidental to Pipe Cost)

Sta. 3+18.7, Line 1 = Sta. 0+00, Line 1A
Const. Std Type-1A Double Curb Inlet. (10' x 6')
Top Elev. = 145.75

SCALE:
1" = 20' HORIZONTAL
1" = 5' VERTICAL
• = IRON



		Harvest Ridge Addition - Phase II	
		LINE 1 Storm Water Sewer Improvements	
PROJECT NUMBER 472-83805		DESIGN MWS/JAK	
REVISIONS:		DRAWN JAK	
APPROVED:		DATE 4/12/06	
SCALE Noted SHEET		12 OF 34	
E:\Eng\Harvest Ridge\Phase 2\SWS1		06-01-E485	