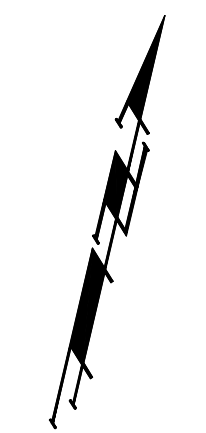


Benchmarks:

"□" Cut Top of Curb North End of Northwest Return at Highland Springs & Hardtner Elev. = 178.72 (City Datum)

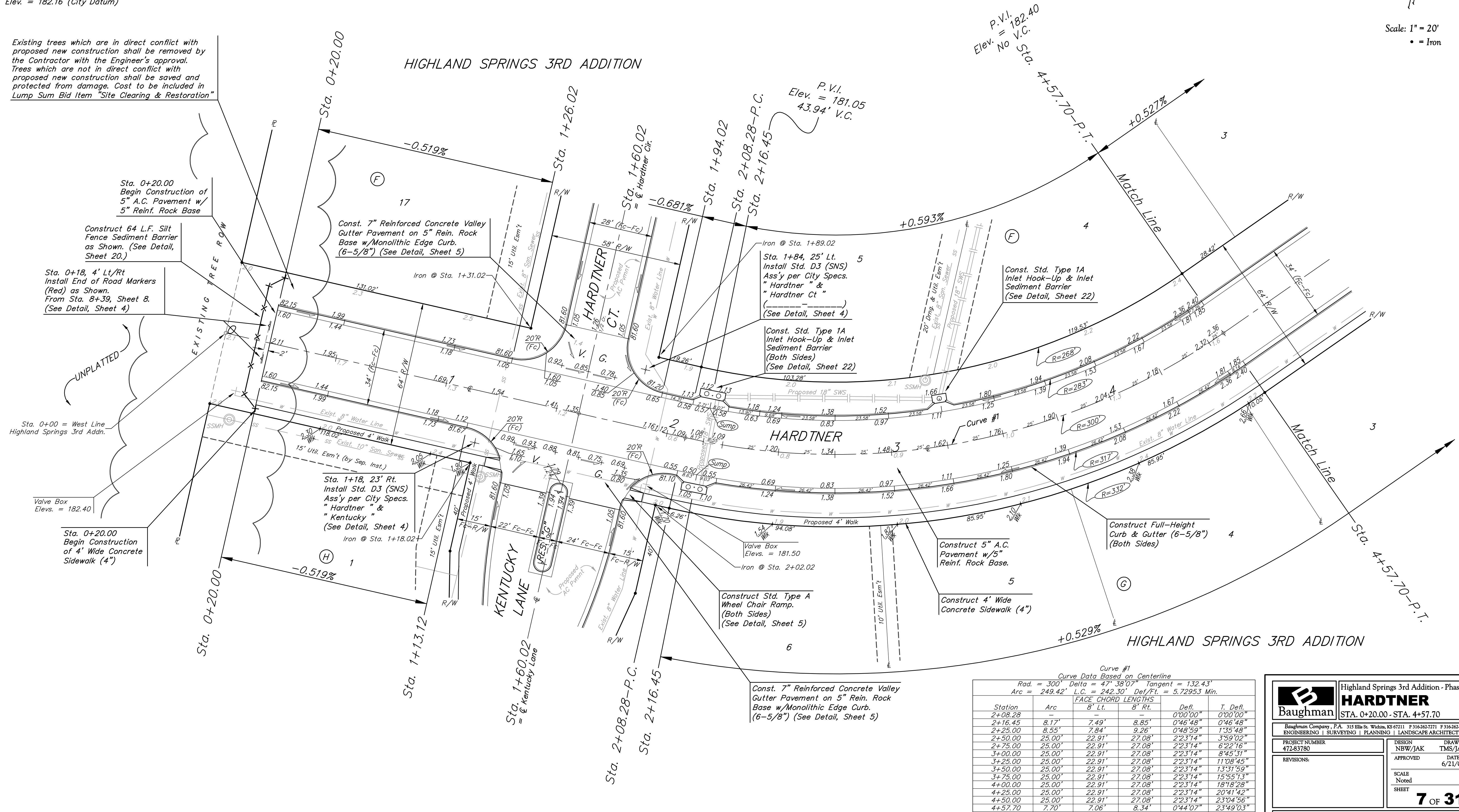
"□" Cut Top of Curb West Side of Kentucky Lane ±20' South of End of Existing pavement. Elev. = 182.16 (City Datum)

Existing trees which are in direct conflict with proposed new construction shall be removed by the Contractor with the Engineer's approval. Trees which are not in direct conflict with proposed new construction shall be saved and protected from damage. Cost to be included in Lump Sum Bid Item "Site Clearing & Restoration"



Scale: 1" = 20'
• = Iron

HIGHLAND SPRINGS 3RD ADDITION



P.V.I. = 182.40
Elev. No V.C. Sta. 4+57.70-P.T.

P.V.I. = 181.05
Elev. 43.94' V.C.

Curve #1
Curve Data Based on Centerline
Rad. = 300' Delta = 47° 38' 07" Tangent = 132.43'
Arc = 249.42' L.C. = 242.30' Def/ft. = 5.72953 Min.

Station	Arc	FACE CHORD LENGTHS		Defl.	T. Defl.
		B' Lt.	B' Rt.		
2+08.28				0'00'00"	0'00'00"
2+16.45	8.17'	7.49'	8.85'	0'46'48"	0'46'48"
2+25.00	8.55'	7.84'	9.26'	0'48'59"	1'35'48"
2+50.00	25.00'	22.91'	27.08'	2'23'14"	3'59'02"
2+75.00	25.00'	22.91'	27.08'	2'23'14"	6'22'16"
3+00.00	25.00'	22.91'	27.08'	2'23'14"	8'45'31"
3+25.00	25.00'	22.91'	27.08'	2'23'14"	11'08'45"
3+50.00	25.00'	22.91'	27.08'	2'23'14"	13'31'59"
3+75.00	25.00'	22.91'	27.08'	2'23'14"	15'55'13"
4+00.00	25.00'	22.91'	27.08'	2'23'14"	18'18'28"
4+25.00	25.00'	22.91'	27.08'	2'23'14"	20'41'42"
4+50.00	25.00'	22.91'	27.08'	2'23'14"	23'04'56"
4+57.70	7.70'	7.06'	8.34'	0'44'07"	23'49'03"

Const. 7" Reinforced Concrete Valley Gutter Pavement on 5" Rein. Rock Base w/Monolithic Edge Curb. (6-5/8") (See Detail, Sheet 5)

Construct Full-Height Curb & Gutter (6-5/8") (Both Sides)

Construct 5" A.C. Pavement w/5" Rein. Rock Base.

Construct Std. Type A Wheel Chair Ramp. (Both Sides) (See Detail, Sheet 5)

Const. Std. Type 1A Inlet Hook-Up & Inlet Sediment Barrier (See Detail, Sheet 22)

Const. Std. Type 1A Inlet Hook-Up & Inlet Sediment Barrier (Both Sides) (See Detail, Sheet 22)

Iron @ Sta. 1+89.02
Sta. 1+84, 25' Lt. Install Std. D3 (SNS) Assy per City Specs. "Hardtner" & "Hardtner Ct" (See Detail, Sheet 4)

Const. 7" Reinforced Concrete Valley Gutter Pavement on 5" Rein. Rock Base w/Monolithic Edge Curb. (6-5/8") (See Detail, Sheet 5)

Sta. 0+20.00 Begin Construction of 5" A.C. Pavement w/ 5" Rein. Rock Base

Sta. 0+18, 4' Lt/Rt Install End of Road Markers (Red) as Shown. From Sta. 8+39, Sheet 8. (See Detail, Sheet 4)

Sta. 0+00 = West Line Highland Springs 3rd Addn.

Valve Box Elev. = 182.40

Sta. 0+20.00 Begin Construction of 4' Wide Concrete Sidewalk (4")

Sta. 1+18, 23' Rt. Install Std. D3 (SNS) Assy per City Specs. "Hardtner" & "Kentucky" (See Detail, Sheet 4)

	Highland Springs 3rd Addition - Phase III	
	HARDTNER STA. 0+20.00 - STA. 4+57.70	
Baughman Company, P.A. 315 Ellis St. Wichita, KS 67211 P 3162627271 F 3162620149 ENGINEERING SURVEYING PLANNING LANDSCAPE ARCHITECTURE		
PROJECT NUMBER 472-83780	DESIGN NBW/JAK	DRAWN TMS/JAK
REVISIONS:	APPROVED DATE 6/21/06	SCALE Noted
		SHEET 7 OF 31