

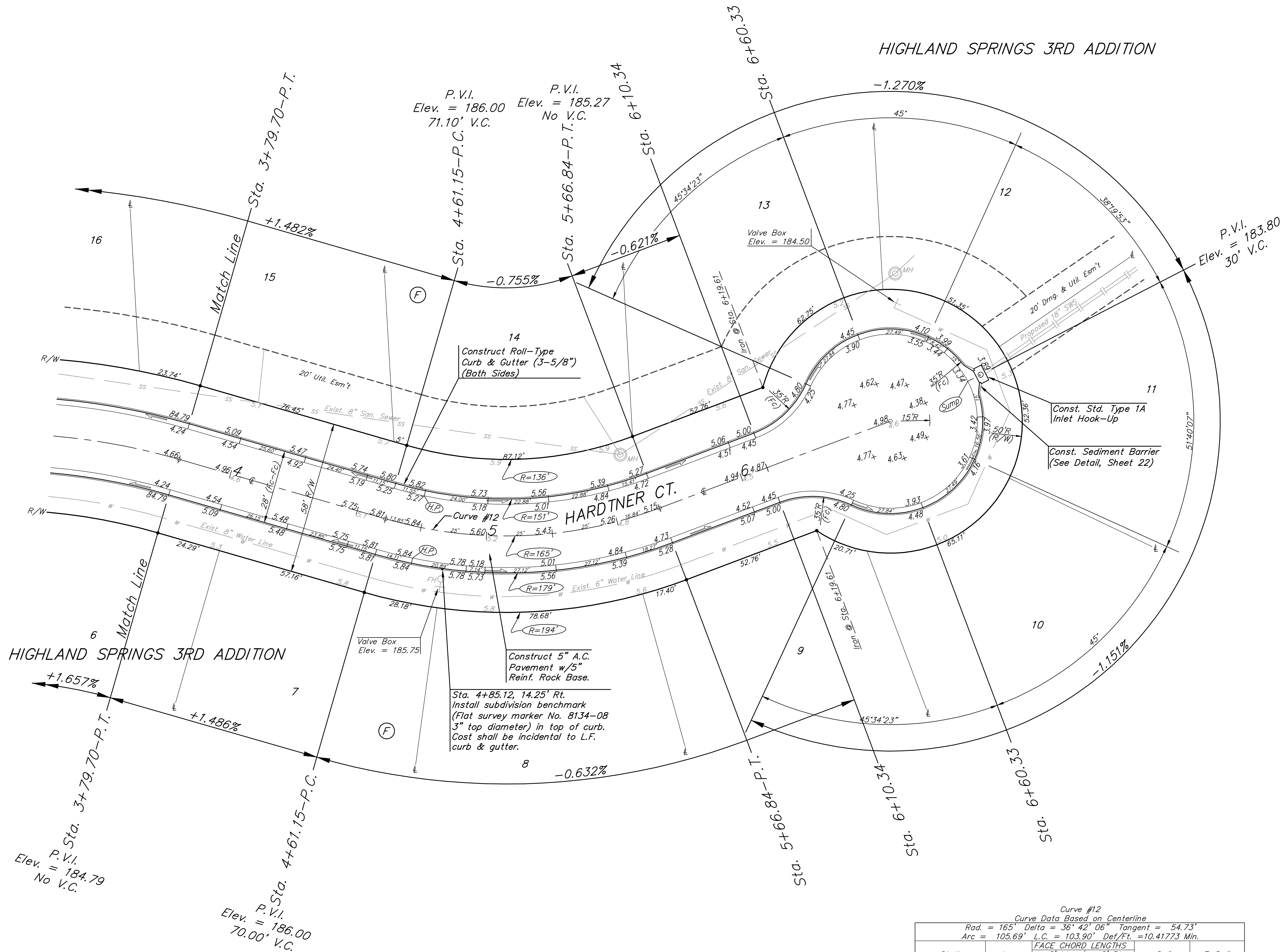
**Benchmarks:**

"□" Cut Top of Curb North  
End of Northwest Return at  
Highland Springs & Hardtner  
Elev. = 178.72 (City Datum)

"□" Cut Top of Curb West  
Side of Kentucky Lane ±20'  
South of End of Existing  
pavement.  
Elev. = 182.16 (City Datum)



Scale: 1" = 20'  
• = Iron



Roll type curb & gutter to  
be constructed on the pavement  
on this sheet.  
Top of curb elevation are given  
for full height curb.

Curve #12  
Curve Data Based on Centerline  
Rad. = 165' Delta = 36° 42' 06" Tangent = 54.73'  
Arc = 105.69' L.C. = 103.90' Def/Ft. = 10.41773 Min.

Station	Arc	FACE CHORD LENGTHS		Defl.	T. Defl.
		8' Lt.	8' Rt.		
4+61.15	-	-	-	0'00'00"	0'00'00"
4+75.00	13.85'	12.00'	15.69'	2'24'17"	2'24'17"
5+00.00	25.00'	21.65'	28.31'	4'20'27"	6'44'44"
5+25.00	25.00'	21.65'	28.31'	4'20'26"	11'05'10"
5+50.00	25.00'	21.65'	28.31'	4'20'27"	15'25'37"
5+66.84	16.84'	14.59'	19.08'	2'55'26"	18'21'03"

**Baughman** | Highland Springs 3rd Addition - Phase III  
**HARDTNER CT.**  
STA. 3+79.70 - STA. 6+60.33

PROJECT NUMBER: 472-83780 | DESIGN: NBW/JAK | DRAWN: TMS/JAK  
APPROVED: [Signature] | DATE: 6/21/06

REVISIONS:

SCALE: Noted  
SHEET: **10** OF **31**