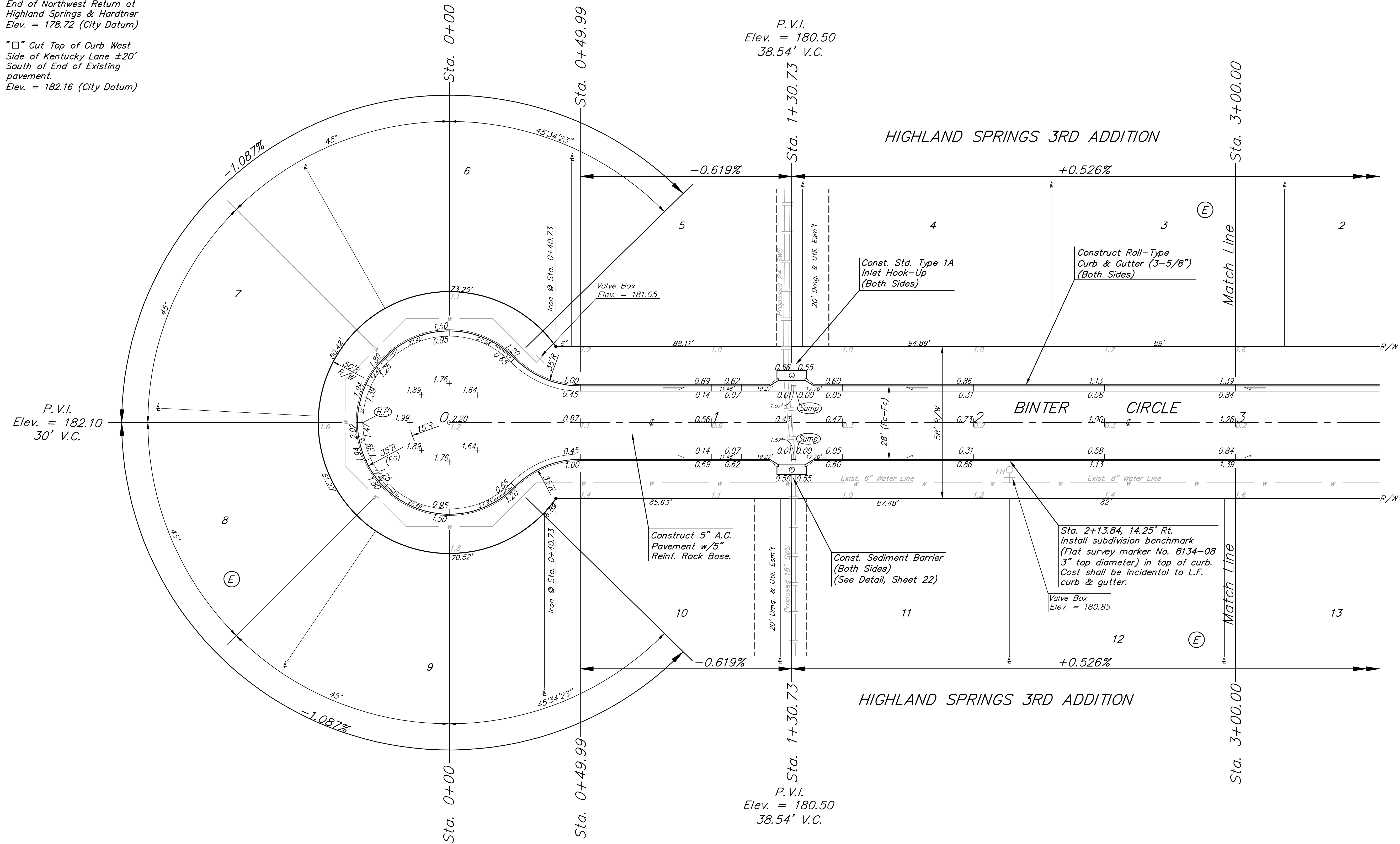


Benchmarks:

"□" Cut Top of Curb North
End of Northwest Return at
Highland Springs & Hardtner
Elev. = 178.72 (City Datum)

"□" Cut Top of Curb West
Side of Kentucky Lane ±20'
South of End of Existing
pavement.
Elev. = 182.16 (City Datum)

Scale: 1" = 20'
• = Iron



Roll type curb & gutter to be constructed on the pavement on this sheet.
Top of curb elevation are given for full height curb.

Subdivision Benchmarks		
Street & Station	Location Description	Elevation
Hardtner 5+43.17, 17.25' Rt.	Adjacent to Fire Hydrant near common lot corner of Lots 2 & 3, Block G	
Hardtner Ct. 4+85.12, 14.25' Rt.	Adjacent to Fire Hydrant near common lot corner of Lots 7 & 8, Block F	
Binter Cir. 15+71.07, 17.25' Lt.	Adjacent to Fire Hydrant near common lot corner of Lots 11 & 12, Block E	

Baughman **BINTER CIR.**
Highland Springs 3rd Addition - Phase III
STA. 0+00 - STA. 3+00

Baughman Company, P.A. 315 Ellis St. Wichita, KS 67211 P 3162627271 F 3162620149
ENGINEERING | SURVEYING | PLANNING | LANDSCAPE ARCHITECTURE

PROJECT NUMBER 472-83780	DESIGN NBW/JAK	DRAWN TMS/JAK
APPROVED	DATE 6/21/06	
REVISIONS:	SCALE Noted	SHEET 11 OF 31

F:\Eng\Highland Springs 3rd\Phase 3\Set5 05-09-E358