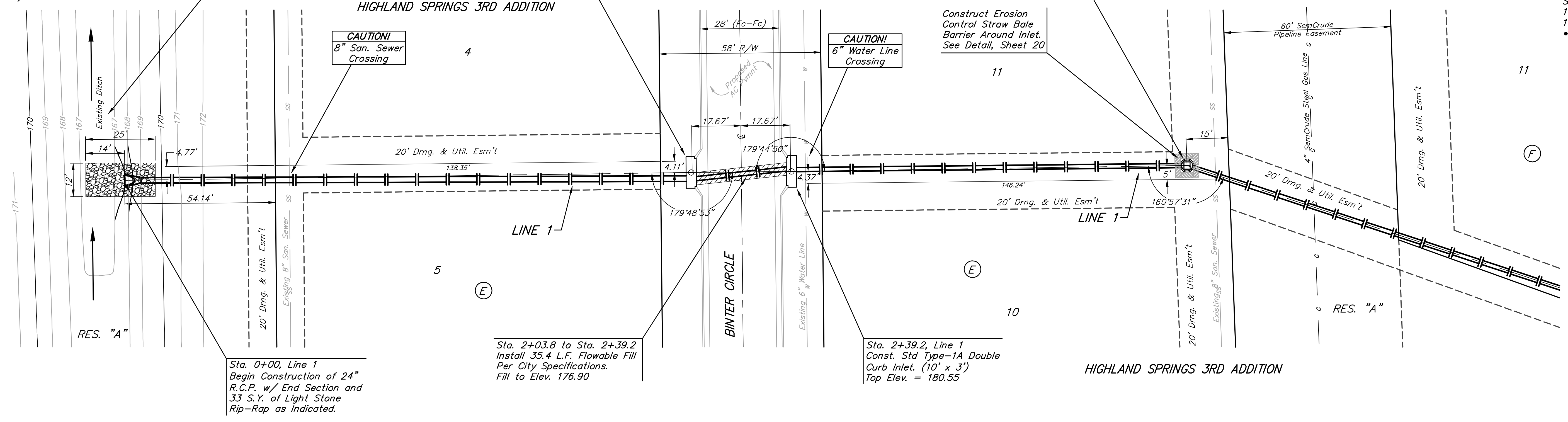


Benchmarks:

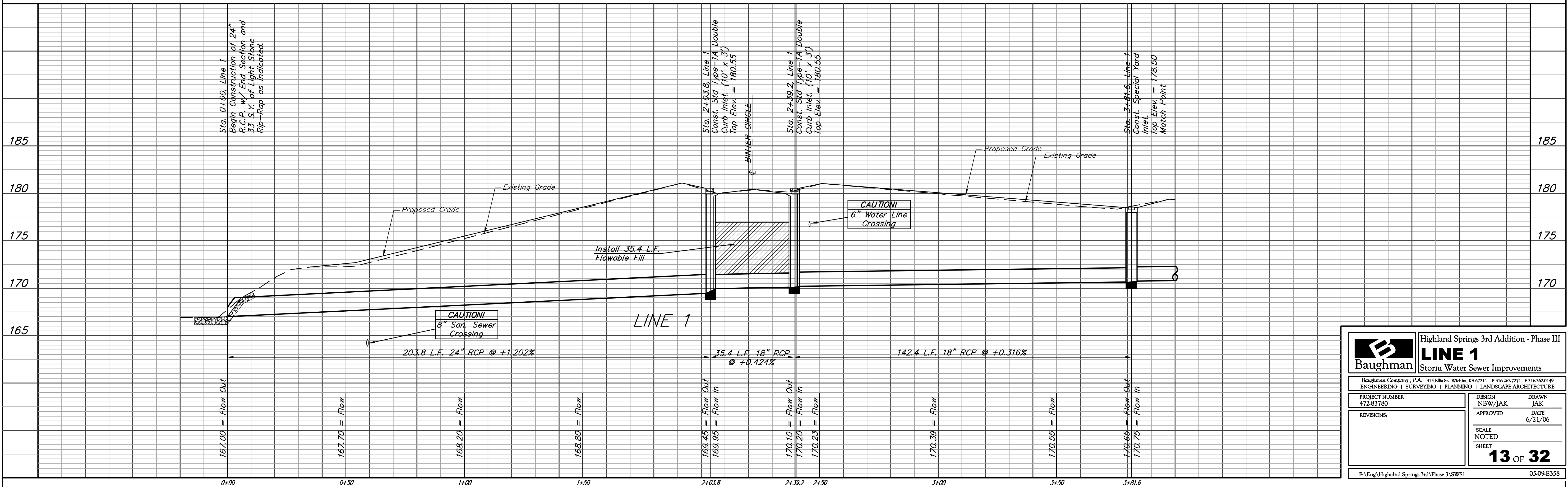
"□" Cut Top of Curb North End of Northwest Return at Highland Springs & Hardtner Elev. = 178.72 (City Datum)

"□" Cut Top of Curb West Side of Kentucky Lane ±20' South of End of Existing pavement. Elev. = 182.16 (City Datum)

Contractor to regrade existing ditch as necessary to provide positive drainage. Cost of regrading to be incidental to Lump Sum bid item "Site Clearing & Restoration"



SCALE:
1" = 20' HORIZONTAL
1" = 5' VERTICAL
• = IRON



		Highland Springs 3rd Addition - Phase III	
		LINE 1 Storm Water Sewer Improvements	
PROJECT NUMBER 472-83780		DESIGN NBW/JAK	
REVISIONS:		DRAWN JAK	
APPROVED		DATE 6/21/06	
SCALE NOTED SHEET		13 OF 32	
F:\Eng\Highland Springs 3rd\Phase 3\SWSI		05-09-E358	