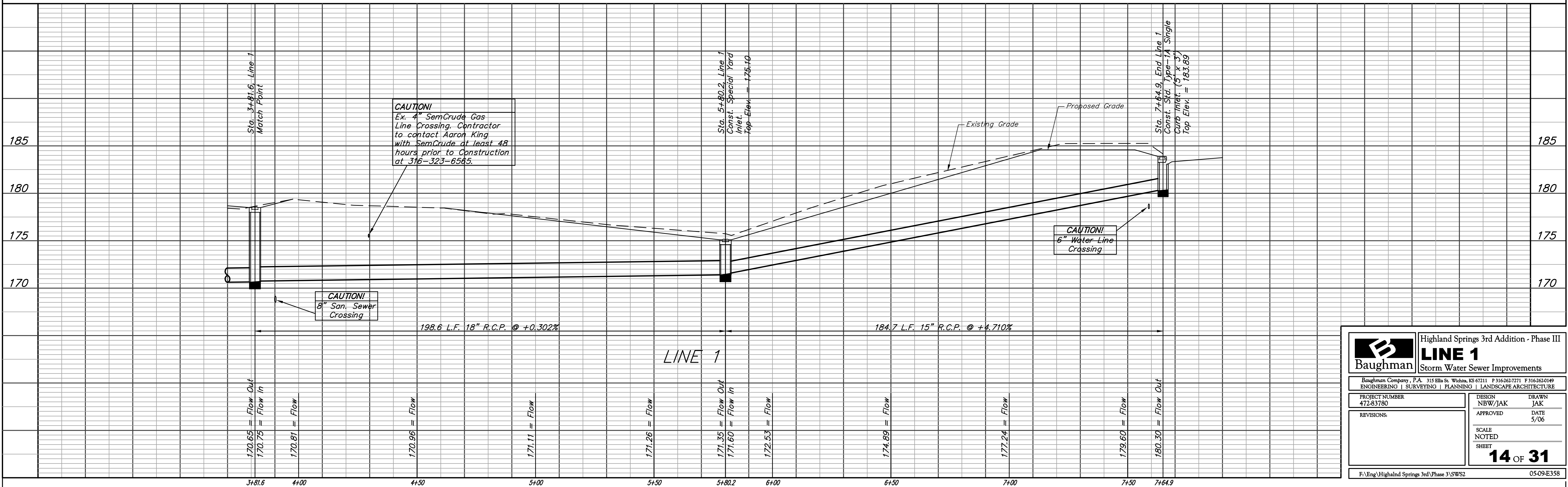
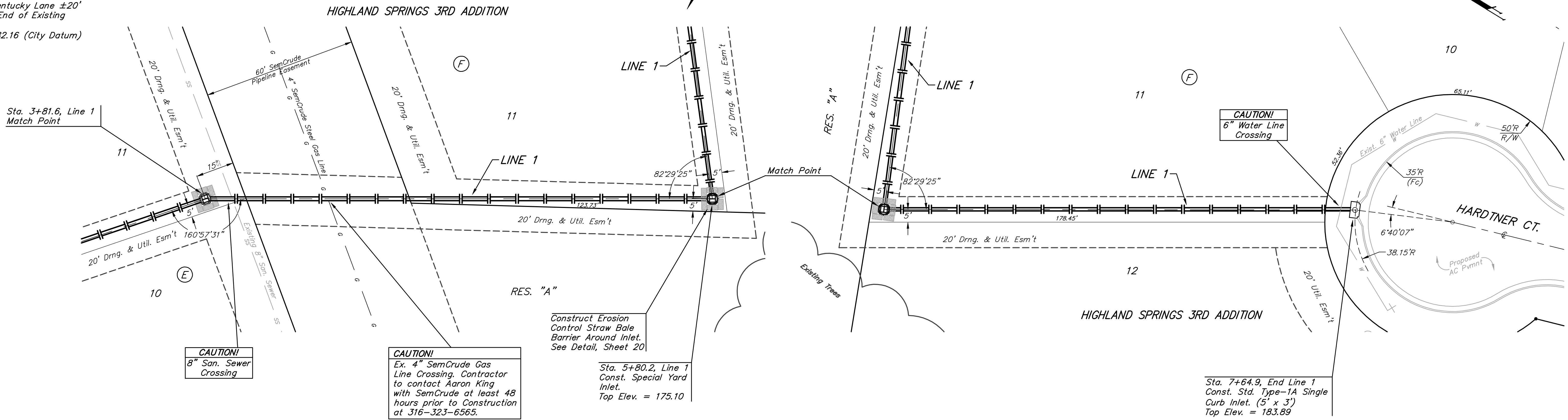


Benchmarks:

"□" Cut Top of Curb North End of Northwest Return at Highland Springs & Hardtner Elev. = 178.72 (City Datum)

"□" Cut Top of Curb West Side of Kentucky Lane ±20' South of End of Existing pavement. Elev. = 182.16 (City Datum)

SCALE:
1" = 20' HORIZONTAL
1" = 5' VERTICAL
• = IRON



		Highland Springs 3rd Addition - Phase III	
		LINE 1 Storm Water Sewer Improvements	
PROJECT NUMBER 472-83780		DESIGN NBW/JAK	
REVISIONS:		DRAWN JAK	
SCALE NOTED		DATE 5/06	
SHEET 14 OF 31			
F:\Eng\Highland Springs 3rd\Phase 3\SW2		05-09-E358	