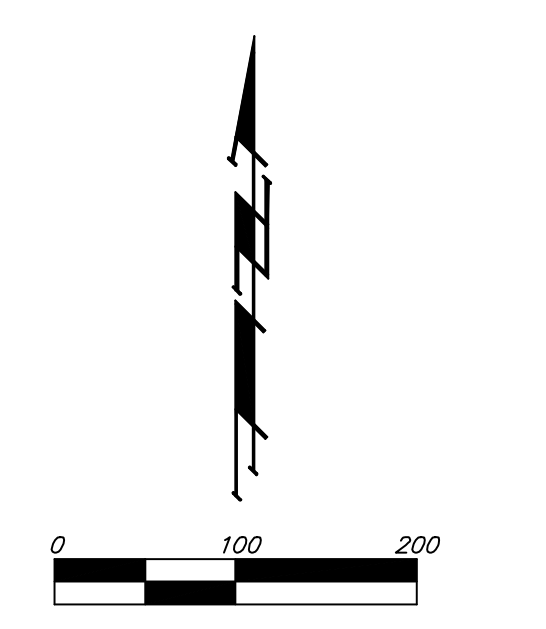
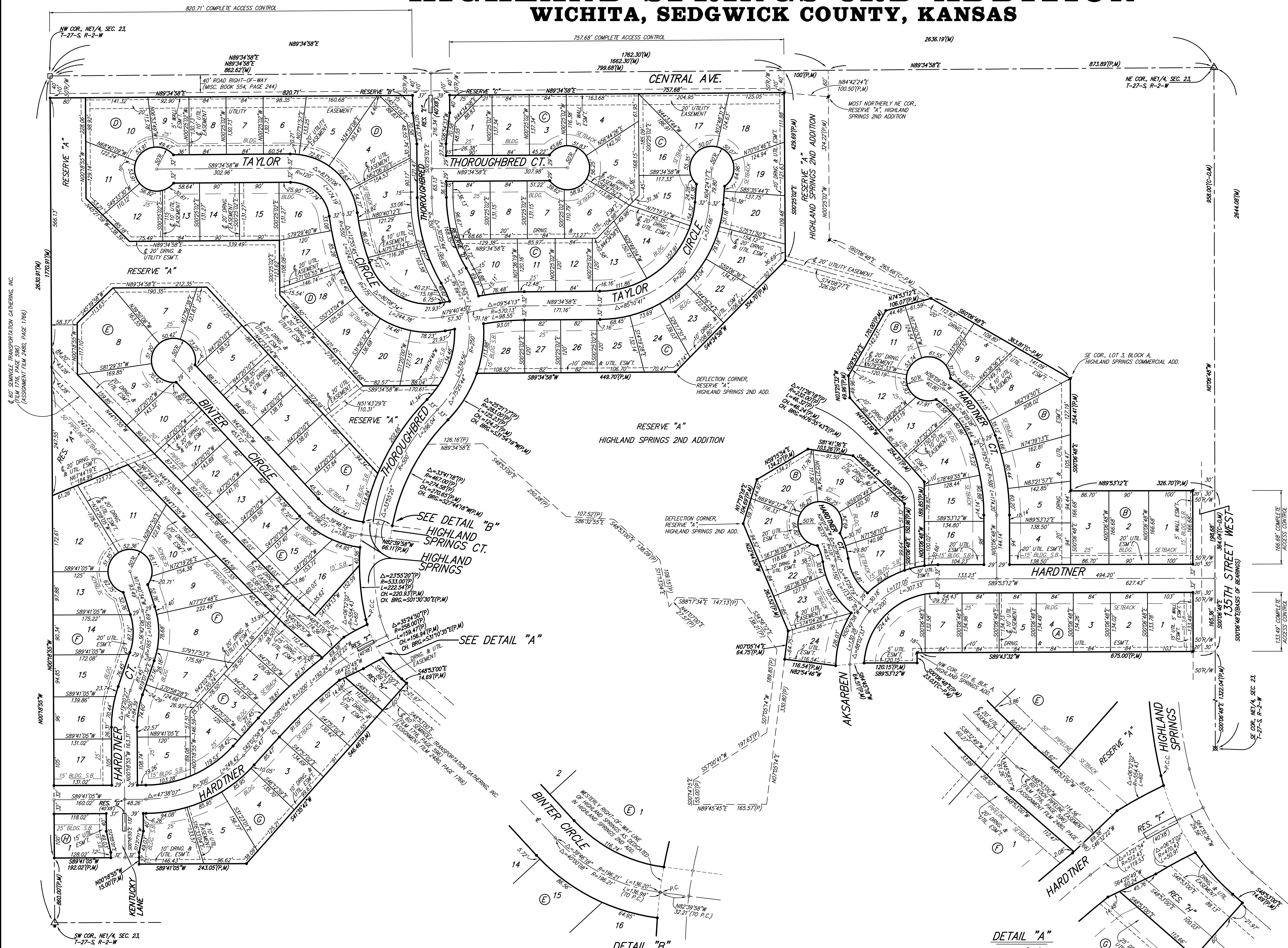


# HIGHLAND SPRINGS 3RD ADDITION

## WICHITA, SEDGWICK COUNTY, KANSAS



- = #4 REBAR W/ 'BAUGHMAN' CAP (SET)
- = #4 REBAR W/ 'BAUGHMAN' CAP (FOUND)
- ▲ = STONE W/ #4 REBAR ON S. SIDE (FOUND)
- △ = 1/2" IRON OVER STONE (FOUND)
- ⊗ = 3/4" IRON (FOUND)
- = STONE W/ #5 REBAR ON W. SIDE (FOUND)

(M) = MEASURED  
 (P) = PLATTED  
 (C-P) = CALCULATED PER PLATTED INFO.  
 (C-D) = CALCULATED PER DESCRIBED INFO.

MINIMUM BUILDING PAD ELEVATIONS FOR LOWEST OPENING TO THE STRUCTURES			
LOT	BLOCK	ELEVATION	
		CITY DATUM	NGVD 29
10-24	B	165.0	1352.4
18-28	C	165.0	1352.4
19-21	D	166.0	1353.4
13-18	D	167.0	1354.4
10-12	D	168.0	1355.4
1-4	E	166.0	1353.4
5-7	E	167.0	1354.4
8	E	168.0	1355.4
9,10	E	169.0	1356.4
11,12	F	169.0	1356.4

**BENCHMARK:**  
 135TH ST. W. & CENTRAL  
 CITY OF WICHITA BENCHMARK DISC - NE COR. INTERSECTION,  
 32.6' N. & 24.5' E. OF & BOTH, 39.5' NE. OF IRON AT SEC. COR.  
 ELEV = 159.50 CITY DATUM  
 (1346.90 M.S.L.)

**NOTE:**  
 A master grading plan for drainage has been developed for this subdivision and is on file with the City of Wichita, Kansas. All drainage easements, right-of-ways, or reserves shall remain at established grades or as modified with the approval of the City Engineer of the City of Wichita, Kansas. No obstructions which impede the flow of this drainage system be allowed.