

BENCHMARKS:

CITY OF WICHITA BENCHMARK DISC, TOP OF CURB AT WEST END OF CURB RETURN, NORTHWEST CORNER OF INTERSECTION OF CITY VIEW AND SHERIAC CIR. IN SHADOW WOODS ADDITION.
ELEV. = 199.26 (CITY DATUM)

CITY OF WICHITA BENCHMARK DISC, TOP OF CURB AT NORTH END OF CURB RETURN, NORTHWEST CORNER OF INTERSECTION OF BURTON AND CAVIT IN SHADOW WOODS ADDITION.
ELEV. = 193.21 (CITY DATUM)

P.V.I.
Elev. = 194.10
40.66' V.C.

P.V.I.
Elev. = 193.80
No V.C.

Scale: 1" = 20'
• = Iron

Existing light pole to be removed prior to construction. Contractor to contact Randy Truitt, Westar Energy at 261-6512 two weeks prior to construction for light pole removal and replacement.

Construct Std. Type A Wheel Chair Ramp with Detectable Warning (Both Sides) (See Detail, Sheet 5)

Sta 1+34.65, 21.5' Lt. Install Std. D3 (SNS) ass'y as per City specs. "City View" & "Burton".

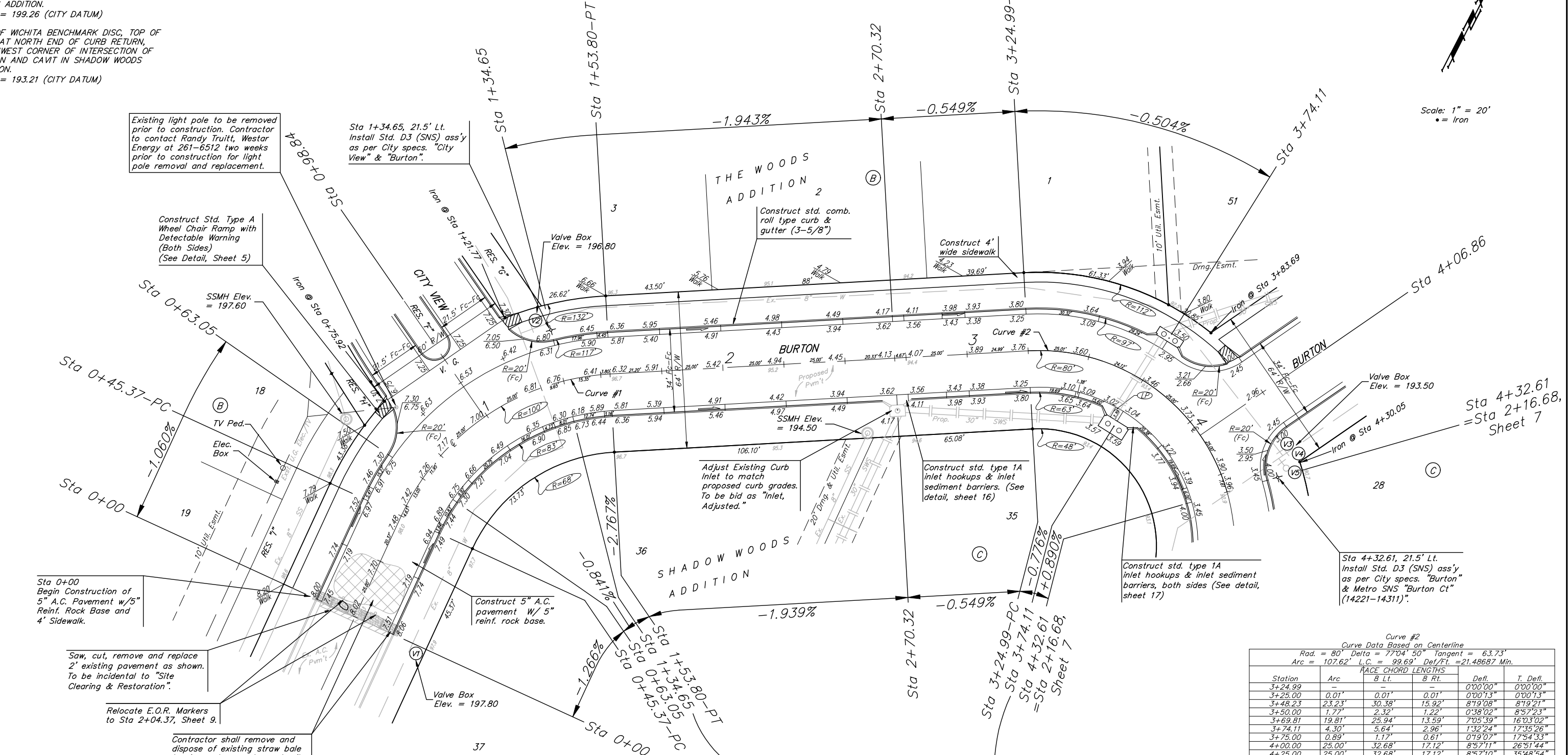
Valve Box Elev. = 196.80

Construct std. comb. roll type curb & gutter (3-5/8")

Construct 4' wide sidewalk

Valve Box Elev. = 193.50

Sta 4+32.61
= Sta 2+16.68,
Sheet 7



Sta 0+00
Begin Construction of 5" A.C. Pavement w/5" Reinf. Rock Base and 4" Sidewalk.

Saw, cut, remove and replace 2" existing pavement as shown. To be incidental to "Site Clearing & Restoration".

Relocate E.O.R. Markers to Sta 2+04.37, Sheet 9.

Contractor shall remove and dispose of existing straw bale barrier and concrete wash piles.

Construct 5" A.C. pavement w/5" reinf. rock base.

Adjust Existing Curb Inlet to match proposed curb grades. To be bid as "Inlet, Adjusted."

Construct std. type 1A inlet hookups & inlet sediment barriers. (See detail, sheet 16)

Construct std. type 1A inlet hookups & inlet sediment barriers, both sides (See detail, sheet 17)

Sta 4+32.61, 21.5' Lt. Install Std. D3 (SNS) ass'y as per City specs. "Burton" & Metro SNS "Burton Ct" (14221-14311)".

Curve #1
Curve Data Based on Centerline
Rad. = 100' Delta = 62°7'33" Tangent = 60.24'
Arc = 108.43' L.C. = 103.20' Def./Ft. = 17.18874 Min.

Station	Arc	FACE CHORD LENGTHS		Defl.	T. Defl.
		8' Lt.	8' Rt.		
0+45.37	-	-	-	0'00'00"	0'00'00"
0+50.00	4.63'	5.79'	3.47'	1'19'35"	1'19'35"
0+63.05	13.05'	16.30'	9.78'	3'44'19"	5'03'54"
0+75.00	11.95'	14.93'	8.96'	3'25'24"	8'29'18"
0+98.84	23.84'	29.73'	17.84'	6'49'47"	15'19'05"
1+00.00	1.16'	1.45'	0.87'	0'19'56"	15'39'01"
1+19.29	19.29'	24.08'	14.45'	5'31'34"	21'10'35"
1+25.00	5.71'	7.14'	4.28'	1'38'09"	22'48'44"
1+34.65	9.65'	12.06'	7.23'	2'45'53"	25'34'37"
1+50.00	15.35'	19.17'	11.50'	4'23'50"	29'58'27"
1+53.80	3.80'	4.75'	2.85'	1'05'19"	31'03'46"

WATER VALVE LOCATION TABLE

VALVE NUMBER	BASELINE STATION	OFFSET DISTANCE	OFFSET DIRECTION
V1	0+00	26'	Rt.
V2	1+28.75	24'	Lt.
V3	4+25.21	25'	Lt.
V4	4+25.29	28'	Lt.
V5	4+28.48	25'	Lt.

Paving contractor will be responsible to operate all water valves on the project, in the presence of the inspector, to ensure accessibility to the valves, and that all valves are left in the "ON" position when the project is completed.

Trees and shrubs in public right-of-way which are in direct conflict with proposed new construction shall be removed by the Contractor ONLY with the Developer or Baughman Company approval. Trees and shrubs which are not in direct conflict with proposed new construction shall be saved and protected from damage.

NOTE: ROLL TYPE CURB & GUTTER TO BE CONSTRUCTED ON THE PAVEMENT SHOWN ON THIS SHEET. TOP OF CURB ELEVATIONS ARE GIVEN FOR FULL HEIGHT CURB.

Curve #2
Curve Data Based on Centerline
Rad. = 80' Delta = 77°04'50" Tangent = 63.73'
Arc = 107.62' L.C. = 99.69' Def./Ft. = 21.48687 Min.

Station	Arc	FACE CHORD LENGTHS		Defl.	T. Defl.
		8 Lt.	8 Rt.		
3+24.99	-	-	-	0'00'00"	0'00'00"
3+25.00	0.01'	0.01'	0.01'	0'00'13"	0'00'13"
3+48.23	23.23'	30.38'	15.92'	8'19'08"	8'19'21"
3+50.00	1.77'	2.32'	1.22'	0'38'02"	8'57'23"
3+69.81	19.81'	25.94'	13.59'	7'05'39"	16'03'02"
3+74.11	4.30'	5.64'	2.96'	1'32'24"	17'35'26"
3+75.00	0.89'	1.17'	0.61'	0'19'07"	17'54'33"
4+00.00	25.00'	32.68'	17.12'	8'57'11"	26'51'44"
4+25.00	25.00'	32.68'	17.12'	8'57'10"	35'48'54"
4+32.61	7.61'	9.98'	5.23'	2'43'31"	38'32'25"

Baughman SHADOW WOODS ADD. - PH V
Burton Street Paving

Baughman Company, P.A. 315 8th St. Wichita, KS 67211 P 316-262-7271 F 316-262-0149
ENGINEERING | SURVEYING | PLANNING | LANDSCAPE ARCHITECTURE

PROJECT NUMBER 472-8406	DESIGN ABG	DRAWN JEB
REVISIONS:	APPROVED	DATE 6-21-06
	SCALE Noted	SHEET 6 OF 37

E:\eng\Shadow Woods Addition\Phase 5\set1.dwg 06-01-E467