

**BENCHMARKS:**

CITY OF WICHITA BENCHMARK DISC, TOP OF CURB AT WEST END OF CURB RETURN, NORTHWEST CORNER OF INTERSECTION OF CITY VIEW AND SHERIAC CIR. IN SHADOW WOODS ADDITION.  
ELEV. = 199.26 (CITY DATUM)

CITY OF WICHITA BENCHMARK DISC, TOP OF CURB AT NORTH END OF CURB RETURN, NORTHWEST CORNER OF INTERSECTION OF BURTON AND CAVIT IN SHADOW WOODS ADDITION.  
ELEV. = 193.21 (CITY DATUM)

Curve #11  
Curve Data Based on Centerline  
Rad. = 300' Delta = 27°40'29" Tangent = 73.89'  
Arc = 144.90' L.C. = 143.50' Def/Ft. = 5.72976 Min.

Station	Arc	FACE CHORD LENGTHS		Defl.	T. Defl.
		8' Lt.	8' Rt.		
2+41.38	-	-	-	0'00'00"	0'00'00"
2+50.00	8.62'	7.99'	9.25'	0'49'23"	0'49'23"
2+75.00	25.00'	23.16'	26.83'	2'23'15"	3'12'38"
2+79.02	4.02'	3.73'	4.31'	0'23'02"	3'35'40"
2+80.89	1.87'	1.73'	2.01'	0'10'43"	3'46'23"
2+94.57	13.68'	12.68'	14.68'	1'18'23"	5'04'46"
2+95.14	0.57'	0.53'	0.61'	0'03'16"	5'08'02"
3+00.00	4.86'	4.50'	5.22'	0'27'51"	5'35'53"
3+19.10	19.10'	17.70'	20.50'	1'49'26"	7'55'19"
3+20.98	1.88'	1.74'	2.02'	0'10'46"	7'56'05"
3+25.00	4.02'	3.73'	4.31'	0'23'02"	7'59'07"
3+50.00	25.00'	23.16'	26.83'	2'23'15"	10'22'22"
3+75.00	25.00'	23.16'	26.83'	2'23'15"	12'45'37"
3+86.28	11.28'	10.45'	12.11'	1'04'38"	13'50'15"

P.V.I.  
Elev. = 189.62  
No V.C.

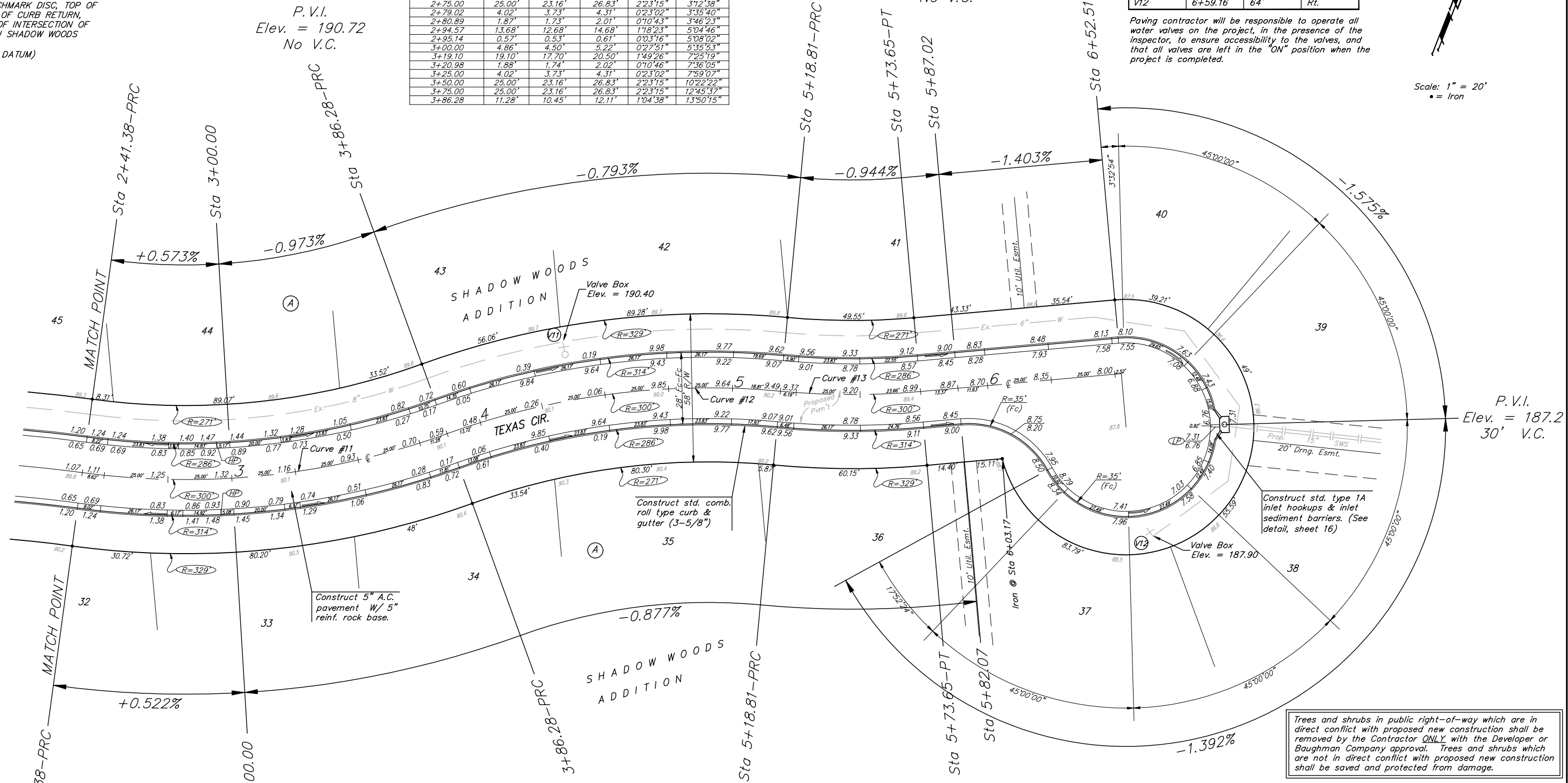
P.V.I.  
Elev. = 189.0  
No V.C.

**WATER VALVE LOCATION TABLE**

VALVE NUMBER	BASELINE STATION	OFFSET DISTANCE	OFFSET DIRECTION
V11	4+37.39	21'	Lt.
V12	6+59.16	64'	Rt.

Paving contractor will be responsible to operate all water valves on the project, in the presence of the inspector, to ensure accessibility to the valves, and that all valves are left in the "ON" position when the project is completed.

Scale: 1" = 20'  
• = Iron



P.V.I.  
Elev. = 187.2  
30' V.C.

Curve #12  
Curve Data Based on Centerline  
Rad. = 300' Delta = 25°18'38" Tangent = 67.36'  
Arc = 132.53' L.C. = 131.45' Def/Ft. = 5.72939 Min.

Station	Arc	FACE CHORD LENGTHS		Defl.	T. Defl.
		8' Lt.	8' Rt.		
3+86.28	-	-	-	0'00'00"	0'00'00"
4+00.00	13.72'	14.72'	12.71'	1'18'36"	1'18'36"
4+25.00	25.00'	26.82'	23.16'	2'23'15"	3'41'51"
4+50.00	25.00'	26.82'	23.16'	2'23'14"	6'05'05"
4+75.00	25.00'	26.82'	23.16'	2'23'14"	8'28'19"
5+00.00	25.00'	26.82'	23.16'	2'23'14"	10'51'33"
5+18.81	18.81'	20.19'	17.43'	1'47'46"	12'39'19"

Curve #13  
Curve Data Based on Centerline  
Rad. = 300' Delta = 10°28'31" Tangent = 27.50'  
Arc = 54.84' L.C. = 54.77' Def/Ft. = 5.73046 Min.

Station	Arc	FACE CHORD LENGTHS		Defl.	T. Defl.
		8' Lt.	8' Rt.		
5+18.81	-	-	-	0'00'00"	0'00'00"
5+25.00	6.19'	5.74'	6.64'	0'35'28"	0'35'28"
5+50.00	25.00'	23.16'	26.83'	2'23'16"	2'58'44"
5+73.65	23.65'	21.91'	25.38'	2'15'31"	5'14'15"

NOTE: ROLL TYPE CURB & GUTTER TO BE CONSTRUCTED ON THE PAVEMENT SHOWN ON THIS SHEET. TOP OF CURB ELEVATIONS ARE GIVEN FOR FULL HEIGHT CURB.

Trees and shrubs in public right-of-way which are in direct conflict with proposed new construction shall be removed by the Contractor ONLY with the Developer or Baughman Company approval. Trees and shrubs which are not in direct conflict with proposed new construction shall be saved and protected from damage.

P.V.I.  
Elev. = 191.20  
No V.C.

P.V.I.  
Elev. = 191.52  
40' V.C.

**Baughman** SHADOW WOODS ADD. - PH V  
**Texas Cir.**  
Street Paving

Baughman Company, P.A. 315 8th St. Wichita, KS 67211 P 3162627271 F 3162620149  
ENGINEERING | SURVEYING | PLANNING | LANDSCAPE ARCHITECTURE

PROJECT NUMBER 472-84060	DESIGN AEG	DRAWN JEB
REVISIONS:	APPROVED	DATE 6-21-06
	SCALE Noted	SHEET <b>11 OF 37</b>

E:\eng\Shadow Woods Addition\Phase 5\wr1.dwg 06-01-E467