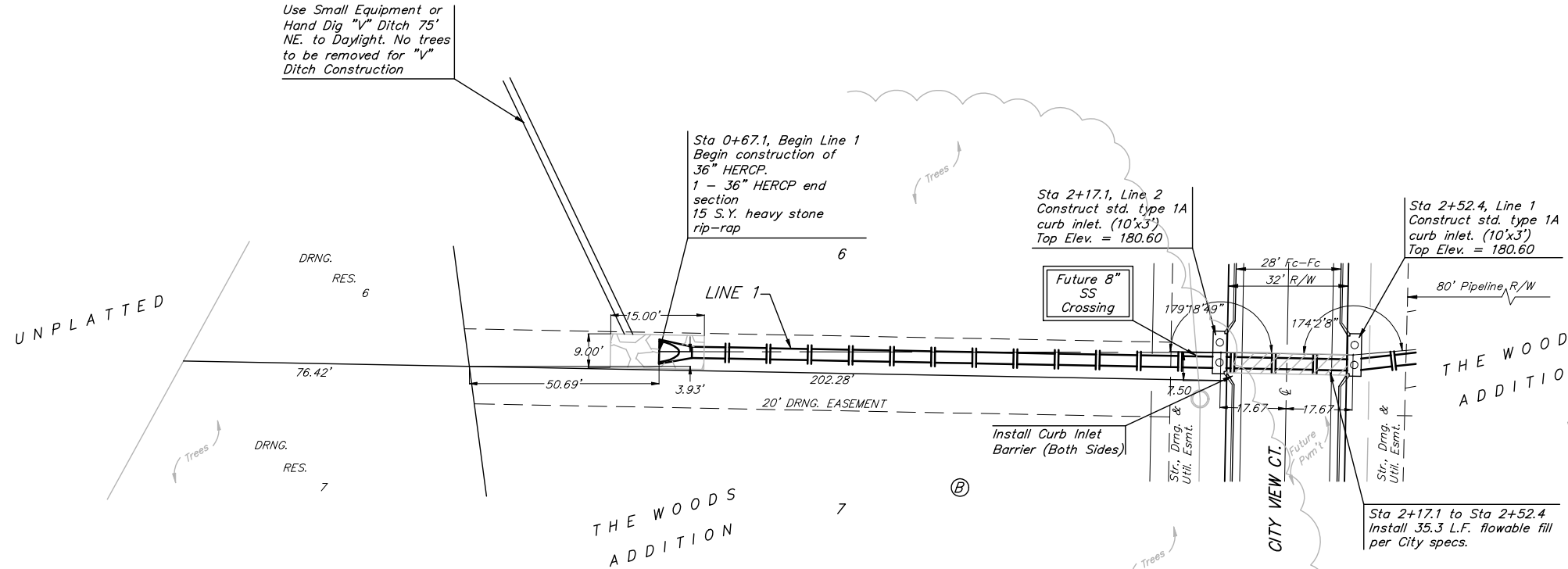


BENCHMARKS:

CITY OF WICHITA BENCHMARK DISC, TOP OF CURB AT WEST END OF CURB RETURN, NORTHWEST CORNER OF INTERSECTION OF CITY VIEW AND SHERIAC CIR. IN SHADOW WOODS ADDITION.
ELEV. = 199.26 (CITY DATUM)

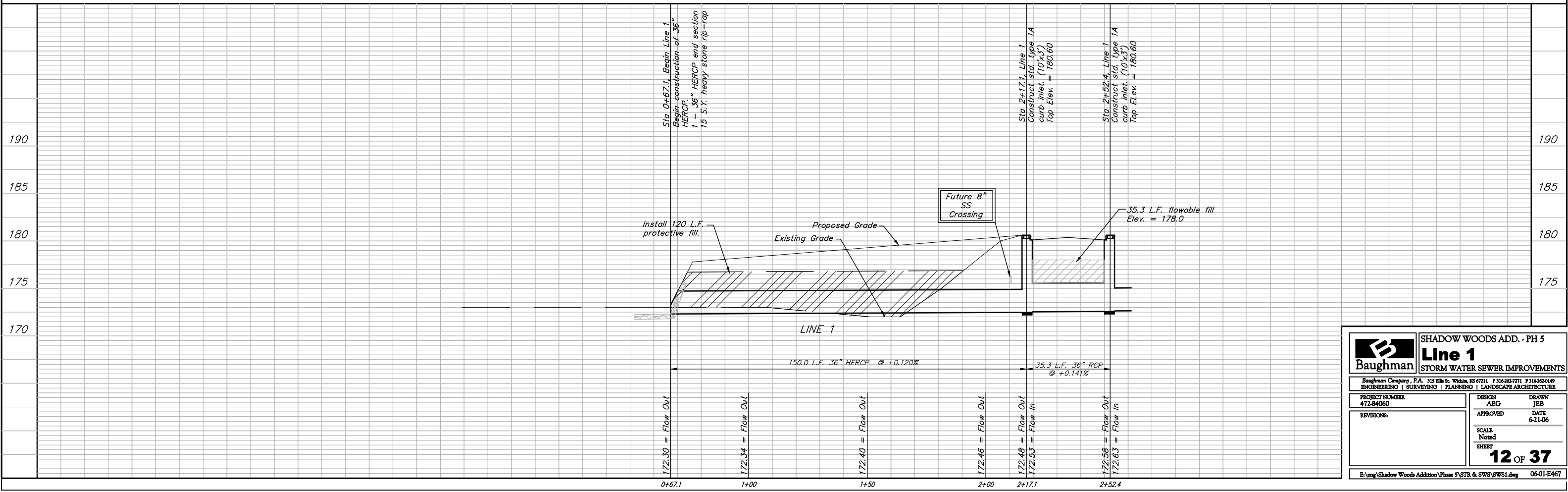
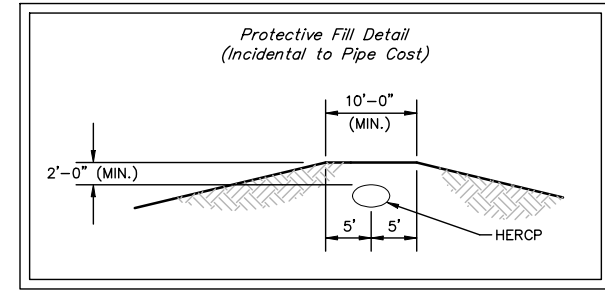
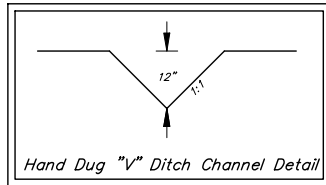
CITY OF WICHITA BENCHMARK DISC, TOP OF CURB AT NORTH END OF CURB RETURN, NORTHWEST CORNER OF INTERSECTION OF BURTON AND CAVIT IN SHADOW WOODS ADDITION.
ELEV. = 193.21 (CITY DATUM)

Use Small Equipment or Hand Dig "V" Ditch 75' NE. to Daylight. No trees to be removed for "V" Ditch Construction



Scale: 1" = 20' Horizontal
1" = 5' Vertical
● = Iron

Remove trees only as necessary for storm sewer construction and only with permission of Developer or Baughman Co. Cost of removal to be incidental to lump sum bid item "Site Clearing & Restoration".



Baughman		SHADOW WOODS ADD. - PH 5	
		Line 1	
		STORM WATER SEWER IMPROVEMENTS	
Baughman Company, P.A. 315 Ellis St. Wichita, KS 67211 P 316262-7771 F 316262-0149			
ENGINEERING SURVEYING PLANNING LANDSCAPE ARCHITECTURE			
PROJECT NUMBER 472-84060	DESIGN ABG	DRAWN JEB	DATE 6-21-06
REVISIONS	APPROVED	SCALE Noted	SHEET
			12 OF 37
E:\eng\Shadow Woods Addition\Phase 5\STR & SWS\SWS1.dwg			06-01-E467