

BENCHMARKS:

CITY OF WICHITA BENCHMARK DISC, TOP OF CURB AT WEST END OF CURB RETURN, NORTHWEST CORNER OF INTERSECTION OF CITY VIEW AND SHERIAC CIR. IN SHADOW WOODS ADDITION.
ELEV. = 199.26 (CITY DATUM)

CITY OF WICHITA BENCHMARK DISC, TOP OF CURB AT NORTH END OF CURB RETURN, NORTHWEST CORNER OF INTERSECTION OF BURTON AND CAVIT IN SHADOW WOODS ADDITION.
ELEV. = 193.21 (CITY DATUM)

Contractor to contact Gary Janzen or Rob Younkin at the C.O.W. prior to removal of existing SWS. 268-4501

Contractor to remove existing 351 L.F. 12" SWS prior to start of construction. Cost to be included in "Site Clearing & Restoration"

Sta 2+60.3 to Sta 3+02.8
Install 42.5 L.F. flowable fill per City specs.

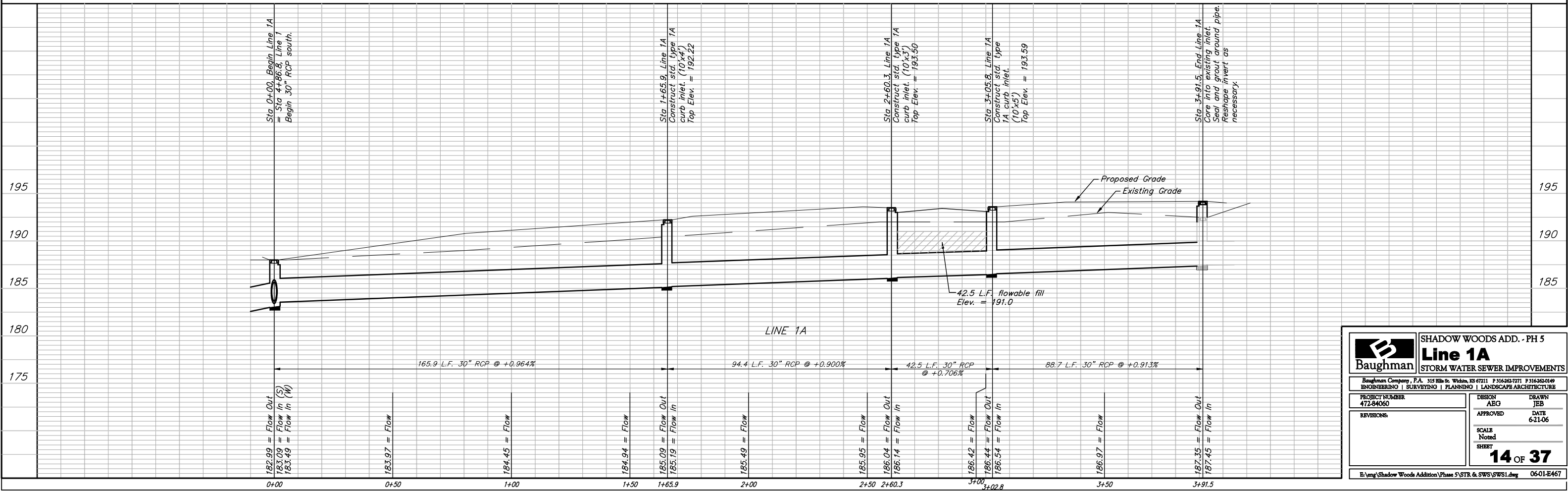
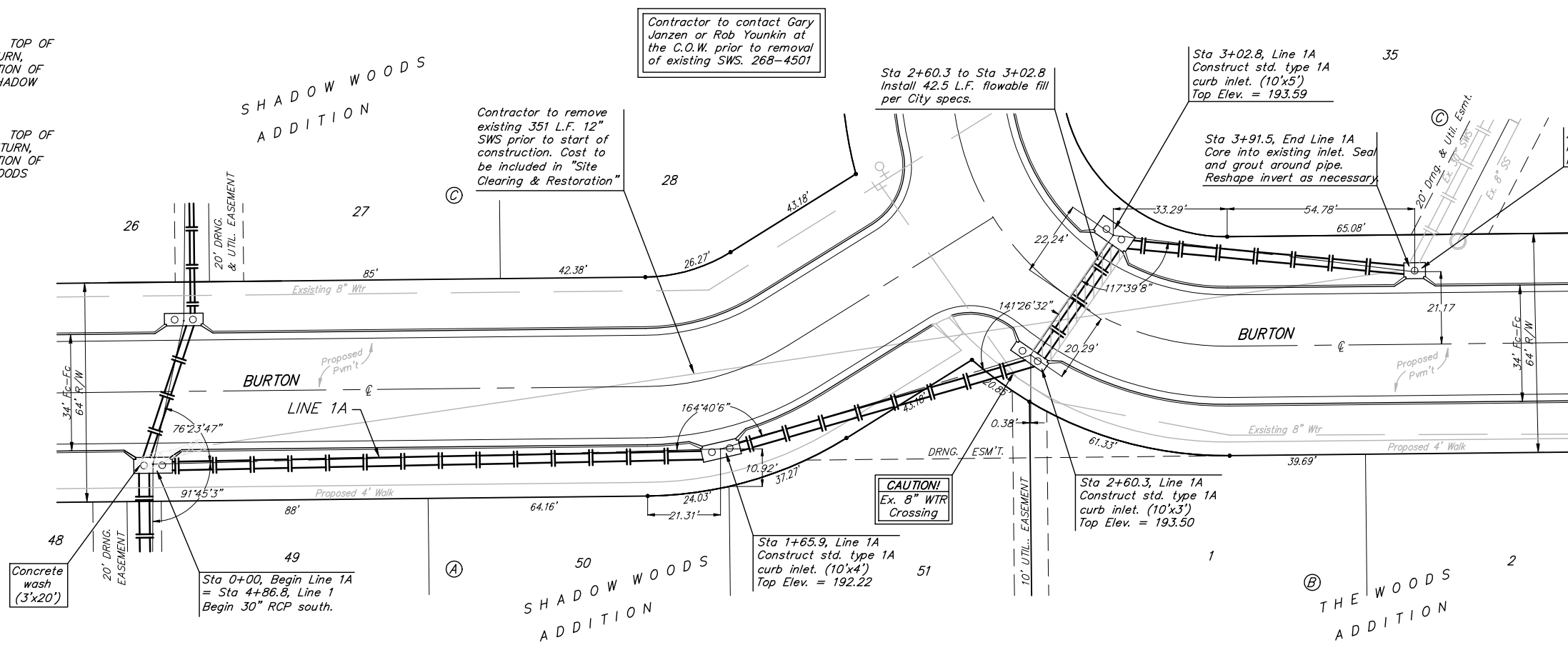
Sta 3+02.8, Line 1A
Construct std. type 1A curb inlet. (10'x5')
Top Elev. = 193.59

Sta 3+91.5, End Line 1A
Core into existing inlet. Seal and grout around pipe. Reshape invert as necessary.

Adjust Existing Curb Inlet to Match Paving Plans. See sheet 6.

Scale: 1" = 20' Horizontal
1" = 5' Vertical
● = Iron

Remove trees only as necessary for storm sewer construction and only with permission of Developer or Baughman Co. Cost of removal to be incidental to lump sum bid item "Site Clearing & Restoration".



		SHADOW WOODS ADD. - PH 5	
		Line 1A	
ENGINEERING SURVEYING PLANNING LANDSCAPE ARCHITECTURE		STORM WATER SEWER IMPROVEMENTS	
<small>Baughman Company, P.A. 315 Ellis St. Wichita, KS 67211 P 316262-7771 F 316262-0149</small>			
PROJECT NUMBER 472-84060	DESIGN ABG	DRAWN JEB	DATE 6-21-06
REVISIONS	APPROVED	SCALE Noted	SHEET
			14 OF 37
E:\eng\Shadow Woods Addition\Phase 5\STR & SWS\SWS1.dwg			06-01-E467