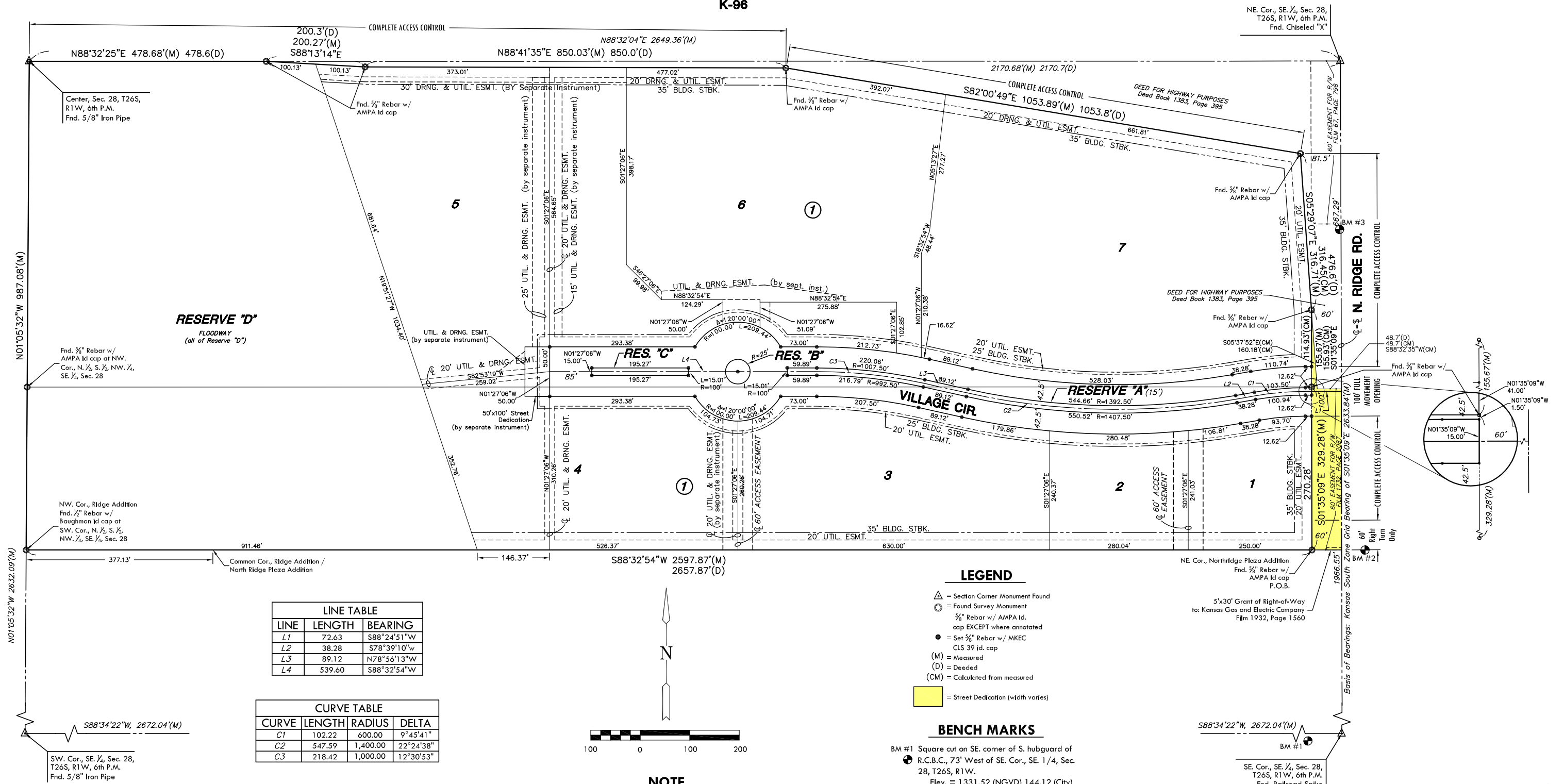


FINAL PLAT

NORTH RIDGE VILLAGE ADDITION

AN ADDITION TO WICHITA, SEDGWICK COUNTY, KANSAS

K-96



LINE TABLE

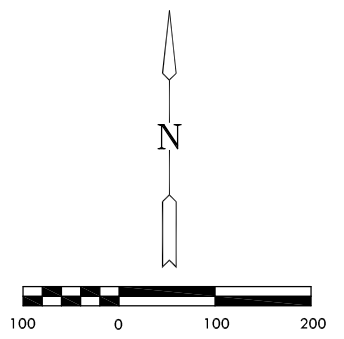
LINE	LENGTH	BEARING
L1	72.63	S88°24'51"W
L2	38.28	S78°39'10"W
L3	89.12	N78°56'13"W
L4	539.60	S88°32'54"W

CURVE TABLE

CURVE	LENGTH	RADIUS	DELTA
C1	102.22	600.00	9°45'41"
C2	547.59	1,400.00	22°24'38"
C3	218.42	1,000.00	12°30'53"

**MINIMUM PAD ELEVATIONS
(LOWEST OPENINGS)**

LOTS	BLOCK	ELEVATION	
		(CITY DATUM)	(NGVD)
1, 2, 3 and 4	1	149.1	1336.5
5, 6, and 7	1	148.1	1335.5



NOTE

This plat shall adhere and conform to the records of CUP DP-280 as approved and recorded at the Wichita-Sedgwick County Metropolitan Planning Area Department.

LEGEND

- △ = Section Corner Monument Found
- = Found Survey Monument
- = 3/8" Rebar w/ AMPA Id. cap EXCEPT where annotated
- = Set 3/8" Rebar w/ MKEC CLS 39 id. cap
- (M) = Measured
- (D) = Deeded
- (CM) = Calculated from measured
- = Street Dedication (width varies)

BENCH MARKS

- BM #1 Square cut on SE. corner of S. hubguard of R.C.B.C., 73' West of SE. Cor., SE. 1/4, Sec. 28, T26S, R1W.
Elev. = 1331.52 (NGVD) 144.12 (City)
- BM #2 Railroad spike in W. face of power pole East of Ridge and 5th pole S. of K-96 (120' E. of SE. corner of Plat)
Elev. = 1336.30 (NGVD) 148.90 (City)
- BM #3 Square cut top of curb of W. side of median island and 10' N. of S. end; said median island lying South of K-96.
Elev. = 1335.38 (NGVD) 147.98 (City)

Center, Sec. 28, T26S, R1W, 6th P.M.
Fnd. 5/8" Iron Pipe

Fnd. 3/8" Rebar w/ AMPA Id cap at NW. Cor., N. 1/2, S. 1/2, NW. 1/4, SE. 1/4, Sec. 28

NW. Cor., Ridge Addition
Fnd. 3/8" Rebar w/ Baughman Id cap at SW. Cor., N. 1/2, S. 1/2, NW. 1/4, SE. 1/4, Sec. 28

SW. Cor., SE. 1/4, Sec. 28, T26S, R1W, 6th P.M.
Fnd. 5/8" Iron Pipe

NE. Cor., SE. 1/4, Sec. 28, T26S, R1W, 6th P.M.
Fnd. Chiseled "X"

DEED FOR HIGHWAY PURPOSES
Deed Book 1383, Page 395

NE. Cor., Northridge Plaza Addition
Fnd. 3/8" Rebar w/ AMPA Id cap P.O.B.
5'x30' Grant of Right-of-Way to: Kansas Gas and Electric Company
Film 1932, Page 1560

SE. Cor., SE. 1/4, Sec. 28, T26S, R1W, 6th P.M.
Fnd. Railroad Spike