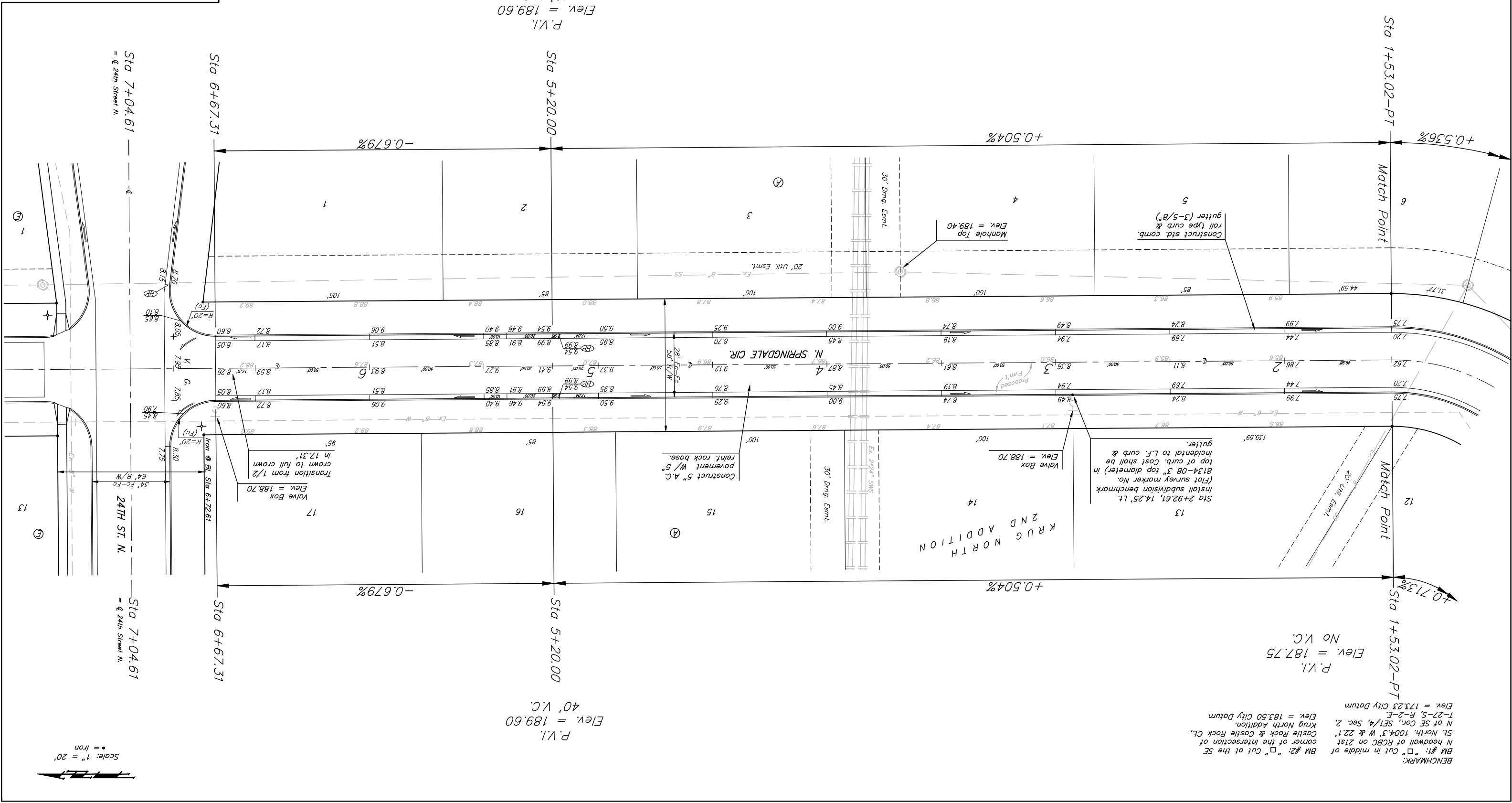


Baughman
 KRUG NORTH 2ND ADD., PH. IV
 STA 1+53.02 TO STA 7+04.61

Engineering Company, P.A. 315 5th St., Waukesha, WI 53181
 ENGINEERING | SURVEYING | PLANNING | LANDSCAPE ARCHITECTURE

PROJECT NUMBER: 47284250
 DRAWN: ATD
 TMS: DATE: 04/06
 APPROVED: SCALE: Noted
 SHEET: 12 OF 35
 05-12B449

NOTE:
 ROLL TYPE CURB & GUTTER TO
 BE CONSTRUCTED ON THE
 PAVEMENT SHOWN ON THIS SHEET.
 TOP OF CURB ELEVATIONS ARE
 GIVEN FOR FULL HEIGHT CURB.



P.V.I.
 Elev. = 187.75
 No V.C.

P.V.I.
 Elev. = 189.60
 40' V.C.

P.V.I.
 Elev. = 187.75
 No V.C.

P.V.I.
 Elev. = 189.60
 40' V.C.

BENCHMARK:
 BM #1: "□" Cut at the SE corner of the intersection of St. North, 1004.3' W & 22.1' N of SE Cor., SE1/4, Sec. 2, Krug North Addition.
 Elev. = 183.50 City Datum
 T-27-S, R-2-E
 Elev. = 173.23 City Datum

Scale: 1" = 20'
 • = Iron