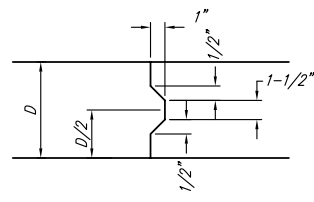
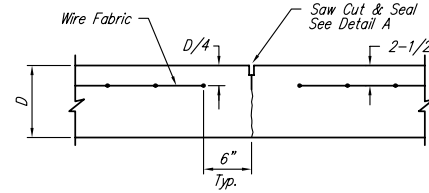


**EXPANSION JOINT**

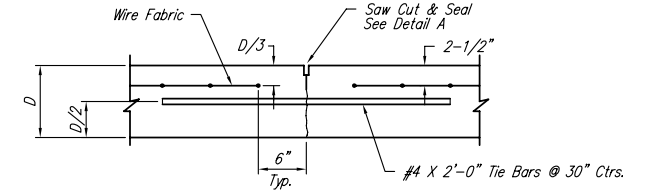
NOTE: Extra Thickness to be Subsidiary to Price of Square Yards Pavement



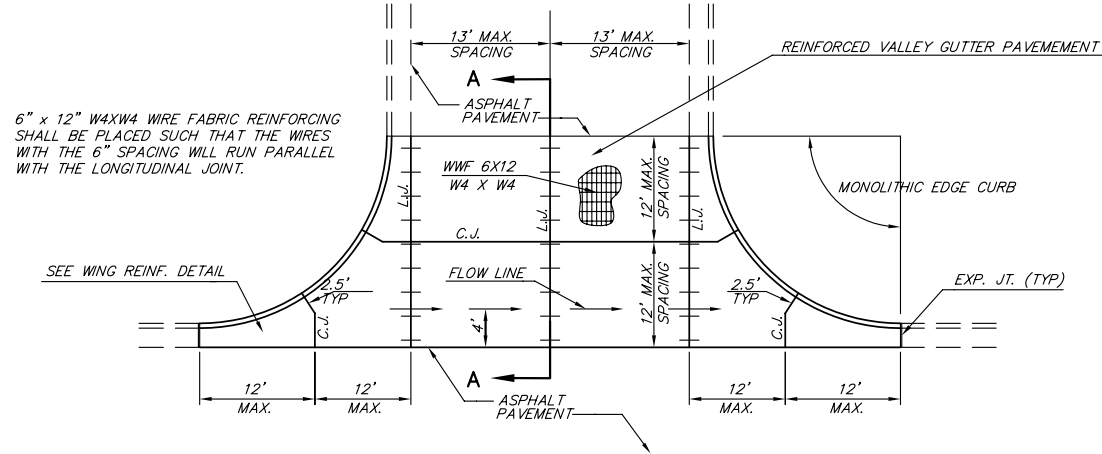
**KEYWAY DETAIL**



**CONTRACTION JOINT DETAIL (C.J.)**

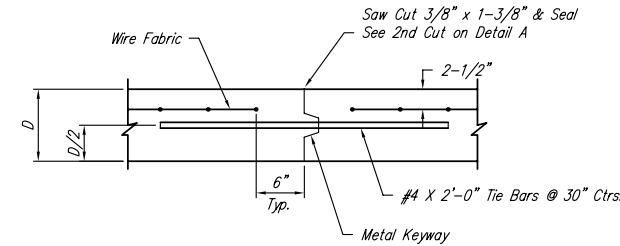


**LONGITUDINAL JOINT DETAIL (L.J.)**

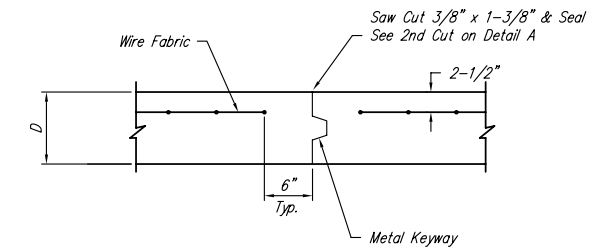


**PLAN**

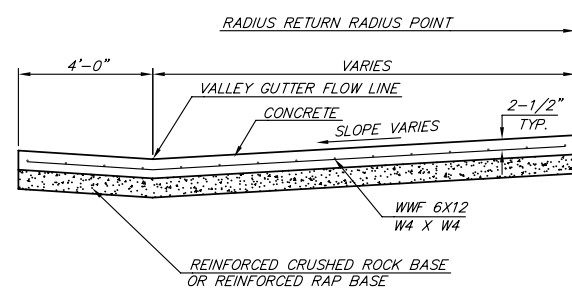
6" x 12" W4XW4 WIRE FABRIC REINFORCING SHALL BE PLACED SUCH THAT THE WIRES WITH THE 6" SPACING WILL RUN PARALLEL WITH THE LONGITUDINAL JOINT.



**OPTIONAL LONGITUDINAL JOINT DETAIL (L.J.)**

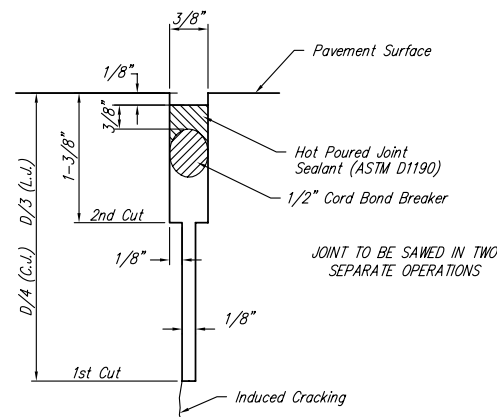


**OPTIONAL CONTRACTION JOINT**

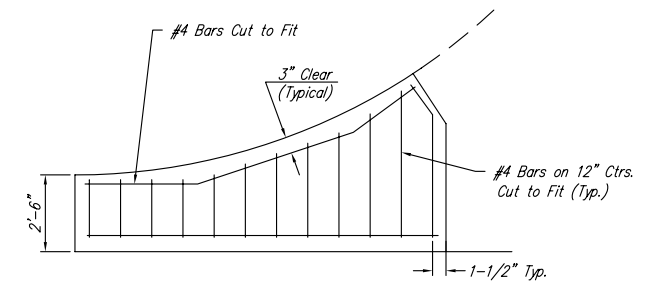


**SECTION A-A**

**REINFORCED VALLEY GUTTER DETAIL**



**SAW JOINT DETAIL**



**WING REINFORCING DETAIL**

|  |                                       |                      |
|--|---------------------------------------|----------------------|
| <p>THE CITY OF WICHITA</p> <p>CITY ENGINEER'S OFFICE<br/>CITY HALL - SEVENTH FLOOR<br/>455 NORTH MAIN STREET<br/>WICHITA, KANSAS 67202<br/>(316) 268-4501<br/>(316) 268-4114 FAX</p> | <b>VALLEY GUTTER DETAILS</b>          |                      |
|  | JAMES L. ARMOUR, P.E. - CITY ENGINEER |                      |
|  | PROJECT NUMBER<br>472-84350           | OCA NO.<br>765977    |
|  | DATE<br>DEC 2005                      | <b>Sheet 4 of 19</b> |

J:\Cadd\04429\Draw\Plan\Gilbert Phase