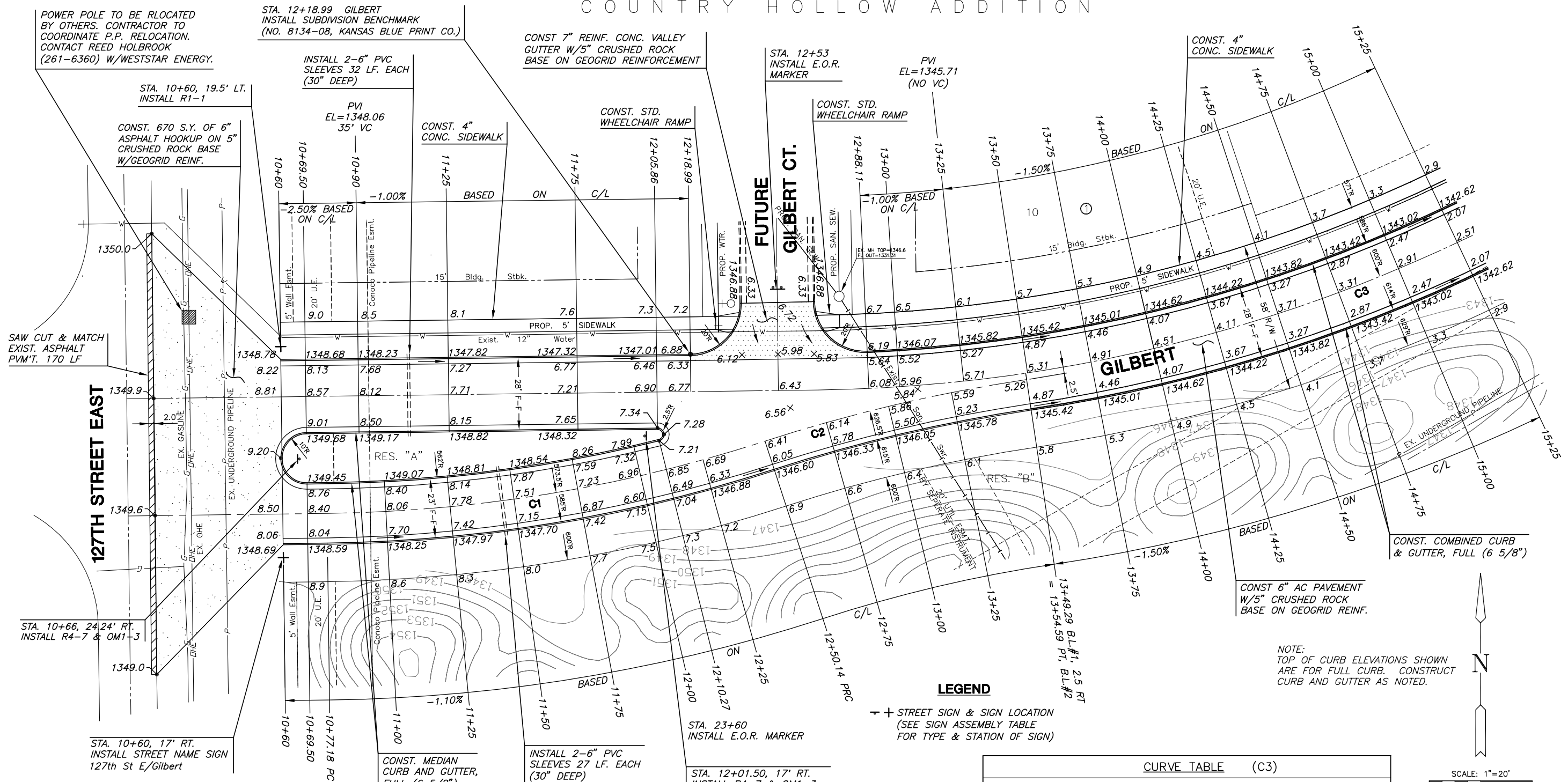


COUNTRY HOLLOW ADDITION



POWER POLE TO BE RLOCATED BY OTHERS. CONTRACTOR TO COORDINATE P.P. RELOCATION. CONTACT REED HOLBROOK (261-6360) W/WESTSTAR ENERGY.

STA. 12+18.99 GILBERT  
INSTALL SUBDIVISION BENCHMARK  
(NO. 8134-08, KANSAS BLUE PRINT CO.)

CONST 7" REINF. CONC. VALLEY  
GUTTER W/5" CRUSHED ROCK  
BASE ON GEOGRID REINFORCEMENT

STA. 12+53  
INSTALL E.O.R.  
MARKER

PVI  
EL=1345.71  
(NO VC)

CONST. 4"  
CONC. SIDEWALK

STA. 10+60, 19.5' LT.  
INSTALL R1-1

CONST. 670 S.Y. OF 6"  
ASPHALT HOOKUP ON 5"  
CRUSHED ROCK BASE  
W/GEOGRID REINF.

INSTALL 2-6" PVC  
SLEEVES 32 LF. EACH  
(30" DEEP)

CONST. 4"  
CONC. SIDEWALK

CONST. STD.  
WHEELCHAIR RAMP

CONST. STD.  
WHEELCHAIR RAMP

SAW CUT & MATCH  
EXIST. ASPHALT  
PVM'T. 170 LF

127TH STREET EAST

STA. 10+66, 24.24' RT.  
INSTALL R4-7 & OM1-3

STA. 10+60, 17' RT.  
INSTALL STREET NAME SIGN  
127th St E/Gilbert

**CURVE TABLE (C1)**

$\Delta = 17'16'47"$ R = 573.50' T = 87.14' L = 172.96' LC = 172.31'					
CURVE DATA BASED ON CENTERLINE $\Delta / 2 = 08'38'24"$					
CHORD LENGTH					
STATION	ARC	8'Off LtCb	8'Off RtCb	DEFLECTION	TOTAL DEFLECTION
10+77.18	-	-	-	00°00'00"	00°00'00"
11+00.00	22.82'	22.04'	23.59'	01°08'24"	01°08'24"
11+25.00	25.00'	24.15'	25.85'	01°14'56"	02°23'19"
11+50.00	25.00'	24.15'	25.85'	01°14'56"	03°38'15"
11+75.00	25.00'	24.15'	25.85'	01°14'56"	04°53'11"
12+00.00	25.00'	24.15'	25.85'	01°14'56"	06°08'07"
12+25.00	25.00'	24.15'	25.85'	01°14'56"	07°23'02"
12+50.00	25.00'	24.15'	25.85'	01°14'56"	08°37'58"
12+50.14	.14'	.14'	.15'	00°00'25"	08°38'24"
Def/Ft = 2.99716 Min.					

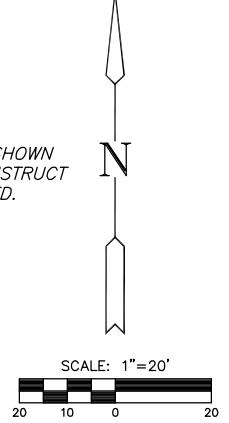
**CURVE TABLE (C2)**

$\Delta = 09'33'08"$ R = 626.50' T = 52.35' L = 104.45' LC = 104.33'					
CURVE DATA BASED ON CENTERLINE $\Delta / 2 = 04'46'34"$					
CHORD LENGTH					
STATION	ARC	8'Off LtCb	8'Off RtCb	DEFLECTION	TOTAL DEFLECTION
12+50.14	-	-	-	00°00'00"	00°00'00"
12+75.00	24.86'	25.63'	24.08'	01°08'12"	01°08'12"
13+00.00	25.00'	25.78'	24.22'	01°08'35"	02°16'46"
13+25.00	25.00'	25.78'	24.22'	01°08'35"	03°25'23"
13+50.00	25.00'	25.78'	24.22'	01°08'35"	04°33'59"
13+54.59	4.59'	4.73'	4.45'	00°12'35"	04°46'34"
Def/Ft = 2.74361 Min.					

**CURVE TABLE (C3)**

$\Delta = 28'54'12"$ R = 600.00' T = 154.63' L = 302.67' LC = 299.48'					
CURVE DATA BASED ON CENTERLINE $\Delta / 2 = 14'27'06"$					
CHORD LENGTH					
STATION	ARC	8'Off LtCb	8'Off RtCb	DEFLECTION	TOTAL DEFLECTION
12+68.37	-	-	-	00°00'00"	00°00'00"
12+75.00	6.63'	6.39'	6.87'	00°19'00"	00°19'00"
13+00.00	25.00'	24.08'	25.91'	01°11'37"	01°30'37"
13+25.00	25.00'	24.08'	25.91'	01°11'37"	02°42'14"
13+50.00	25.00'	24.08'	25.91'	01°11'37"	03°53'51"
13+75.00	25.00'	24.08'	25.91'	01°11'37"	05°05'28"
14+00.00	25.00'	24.08'	25.91'	01°11'37"	06°17'06"
14+25.00	25.00'	24.08'	25.91'	01°11'37"	07°28'43"
14+50.00	25.00'	24.08'	25.91'	01°11'37"	08°40'20"
14+75.00	25.00'	24.08'	25.91'	01°11'37"	09°51'57"
15+00.00	25.00'	24.08'	25.91'	01°11'37"	11°03'34"
15+25.00	25.00'	24.08'	25.91'	01°11'37"	12°15'11"
15+50.00	25.00'	24.08'	25.91'	01°11'37"	13°26'49"
15+71.04	21.04'	20.27'	21.82'	01°00'17"	14°27'06"
Def/Ft = 2.86479 Min.					

NOTE:  
TOP OF CURB ELEVATIONS SHOWN  
ARE FOR FULL CURB. CONSTRUCT  
CURB AND GUTTER AS NOTED.



PAVING PLANS  
**COUNTRY HOLLOW**  
GILBERT PHASE 1

**GILBERT PAVING**  
SHEET TITLE

472-84350  
PROJECT NUMBER

DFL  
DESIGN BY

DMU/MUK  
DRAWN BY

GJA  
CHECKED BY

ISSUED  
MARCH 2006

REVISION

SHEET NO.

8 of 19