

# PAVING STREETS IN COUNTRY HOLLOW ADDITION

AN ADDITION TO THE CITY OF WICHITA  
SEDGWICK COUNTY, KANSAS  
JAMES L. ARMOUR, P.E. - CITY ENGINEER

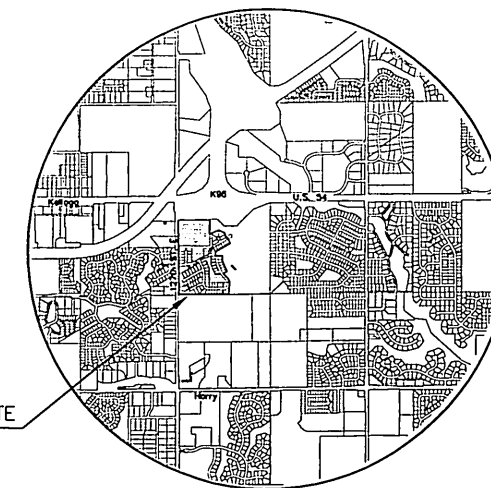
## GENERAL NOTES

- UNLESS SHOWN OR STATED OTHERWISE ON THESE DRAWINGS, MATERIALS AND CONSTRUCTION SHALL BE IN ACCORDANCE WITH CITY OF WICHITA CONCRETE PAVEMENT AND ASPHALTIC CONCRETE PAVEMENT SPECIFICATIONS.
- CONTRACTOR WILL BE REQUIRED TO PROVIDE A MINIMUM ADVANCE NOTICE OF SEVENTY-TWO (72) HOURS TO UTILITY COMPANIES PRIOR TO STARTING ANY EXCAVATION AS FOLLOWS:  
KANSAS ONE-CALL 1-800-344-7233  
OR 687-2470 (LOCAL WICHITA)  
THE CONTRACTOR MUST NOTIFY THE FOLLOWING IN CASE OF AN EMERGENCY:  
SBC (TELEPHONE) 800-870-8390  
COX COMMUNICATIONS (CABLE) 262-0661  
WESTAR (ELECTRIC) 383-8600  
KANSAS GAS SERVICE (GAS) 832-3101  
CITY OF WICHITA WATER & SEWER MAINT. 262-6000  
AQUILA (GAS) 800-303-0357
- THE CONTRACTOR SHALL BE RESPONSIBLE FOR PRESERVING PROPERTY IRONS. THE CONTRACTOR WILL BE REQUIRED TO RE-ESTABLISH ANY PROPERTY IRONS WHICH ARE DAMAGED OR DESTROYED BY HIS CONSTRUCTION OPERATIONS. SUCH IRONS SHALL BE RE-ESTABLISHED BY A LICENSED LAND SURVEYOR IN ACCORDANCE WITH STATE LAWS.
- EXISTING UTILITIES AND THEIR LOCATIONS, AS SHOWN ON THE PLANS REPRESENT THE BEST INFORMATION OBTAINABLE FOR DESIGN. LOCATION INFORMATION HAS BEEN OBTAINED FROM THE VARIOUS UTILITY COMPANIES AND IS EITHER FROM COMPANY RECORD DRAWINGS OR COMPANY PROVIDED FIELD LOCATIONS. THE PLAN LOCATIONS SHOWN ARE NOT GUARANTEED. ADDITIONAL EXISTING UTILITIES MAY ALSO BE ENCOUNTERED.
- RUBBLE FROM THE REMOVAL OF MISCELLANEOUS STRUCTURES AND EXCESS EXCAVATION WHICH IS TO BE WASTED SHALL BE DISPOSED OF ON SITES TO BE PROVIDED BY THE CONTRACTOR. THESE SITES SHALL BE APPROVED BY THE ENGINEER AS TO SUITABILITY, APPEARANCE AND SITE LOCATION. LOCATIONS THAT, IN THE OPINION OF THE ENGINEER, WILL LEAVE AN UNSIGHTLY APPEARANCE WILL NOT BE APPROVED. ALL DISPOSAL SITES MUST BE APPROVED BY THE KANSAS DEPARTMENT OF HEALTH AND ENVIRONMENT. MATERIAL EITHER STOCKPILED OR DISPOSED OF IN A FLOOD PLAIN WOULD REQUIRE A KANSAS STATE BOARD OF AGRICULTURE PERMIT. ANY MATERIAL DUMPED IN WATERS OF THE UNITED STATES OR WETLANDS IS SUBJECT TO U.S. CORPS OF ENGINEERS PERMITTING REGULATIONS. ANY MATERIAL BURIED OR STOCKPILED BEYOND APPROVED CONSTRUCTION LIMITS WOULD REQUIRE ADDITIONAL ARCHAEOLOGICAL INVESTIGATIONS UNLESS BURIED IN A PREVIOUSLY APPROVED BORROW LOCATION.
- THIS PROJECT INCLUDES A CERTAIN AMOUNT OF ROLL TYPE CURB CONSTRUCTION. ROLL CURBS SHALL BE DEPRESSED THROUGH ALL DRIVEWAY OPENINGS WHEN SUCH DRIVES ARE CONSTRUCTED AS A PART OF THE PROJECT. NO MORE THAN 2 DRIVES 20 FEET IN WIDTH OR EQUIVALENT COMBINATIONS THEREOF ARE TO BE CONSTRUCTED WITH THIS PROJECT.
- TRANSITION CURB FROM FULL HEIGHT COMBINATION CURB AND GUTTER TO ROLL TYPE COMBINATION CURB AND GUTTER IS TO BE PAID AS BID FOR LINEAL FEET COMBINED CURB AND GUTTER (3 5/8" ROLL).
- A SAW CUT OF AT LEAST ONE-HALF THE DEPTH OF THE EXISTING SURFACE COURSES OR ONE-FOURTH THE DEPTH OF THE EXISTING TOTAL PAVEMENT THICKNESS SHALL BE PROVIDED AT LOCATIONS WHERE PROPOSED CONSTRUCTION ABUTS AN EXISTING SURFACE OR PAVEMENT FOR WHICH PARTIAL REMOVAL OF THAT SURFACE OR PAVEMENT IS REQUIRED. SAW JOINT TO FACILITATE REMOVAL WITHIN THREE (3) FEET OF EXISTING JOINTS WILL NOT BE PERMITTED AND FOR SUCH INSTANCES THE LIMITS OF REMOVAL SHALL EXTEND TO THE EXISTING JOINT. SUCH SAW CUTS WILL NOT BE PAID FOR DIRECTLY AND THIS COST SHALL BE CONSIDERED AS SUBSIDIARY TO THE REMOVAL OF SURFACE OR PAVEMENT.
- ALL AREAS DISTURBED SHALL BE SEEDED AND FERTILIZED AS FOLLOWS:  
BROME GRASS @ 200 LBS./ACRE  
10-20-10 @ 200 LBS./ACRE
- ALL SEED SHALL BE DISTRIBUTED WITH AN ACCEPTABLE DRILL INTENDED FOR SUCH OPERATIONS, OR OTHER EQUIPMENT APPROVED BY THE OWNER'S REPRESENTATIVE. SEEDING DEPTH SHALL BE 1/4" MAXIMUM.
- ALL SEEDING AREAS SHALL BE IMMEDIATELY MULCHED W/ PRAIRIE HAY AT 2 TONS/ACRE. ANCHOR MULCH BY CRIMPING INTO TOPSOIL WITH SUITABLE MECHANICAL EQUIPMENT.

PROJECT LENGTH	
PECKHAM/LAGUNA/ SIERRA HILLS.....	2400 FT.
PECKHAM CT (NORTH).....	580 FT.
PECKHAM CT (SOUTH).....	510 FT.
EARTHWORK QUANTITIES	
EXCAVATION.....	2100 C.Y.
COMPACTED FILL.....	2100 C.Y.

## PHASE 1 PROJECT NO. 472-84328, OCA 765974

PECKHAM/LAGUNA/SIERRA HILLS: FROM THE S. LINE OF GILBERT  
TO THE N. LINE OF LOT 20, BLOCK 3  
PECKHAM COURT: SERVING LOTS 1-15, BLOCK 2, FROM THE W. LINE  
OF PECKHAM TO AND INCLUDING THE CUL-DE-SAC  
PECKHAM COURT: SERVING LOTS 16-27, BLOCK 2, FROM THE W. LIN  
OF PECKHAM TO AND INCLUDING THE CUL-DE-SAC  
LAGUNA: FROM THE E. LINE OF LOT 36, BLOCK 2 TO 237' E. OF THE  
E. LINE OF LOT 36, BLOCK 2



**MKEC**  
ENGINEERING  
CONSULTANTS, INC.  
411 N. WEBB ROAD  
WICHITA, K.S. 67206  
316-684-9600

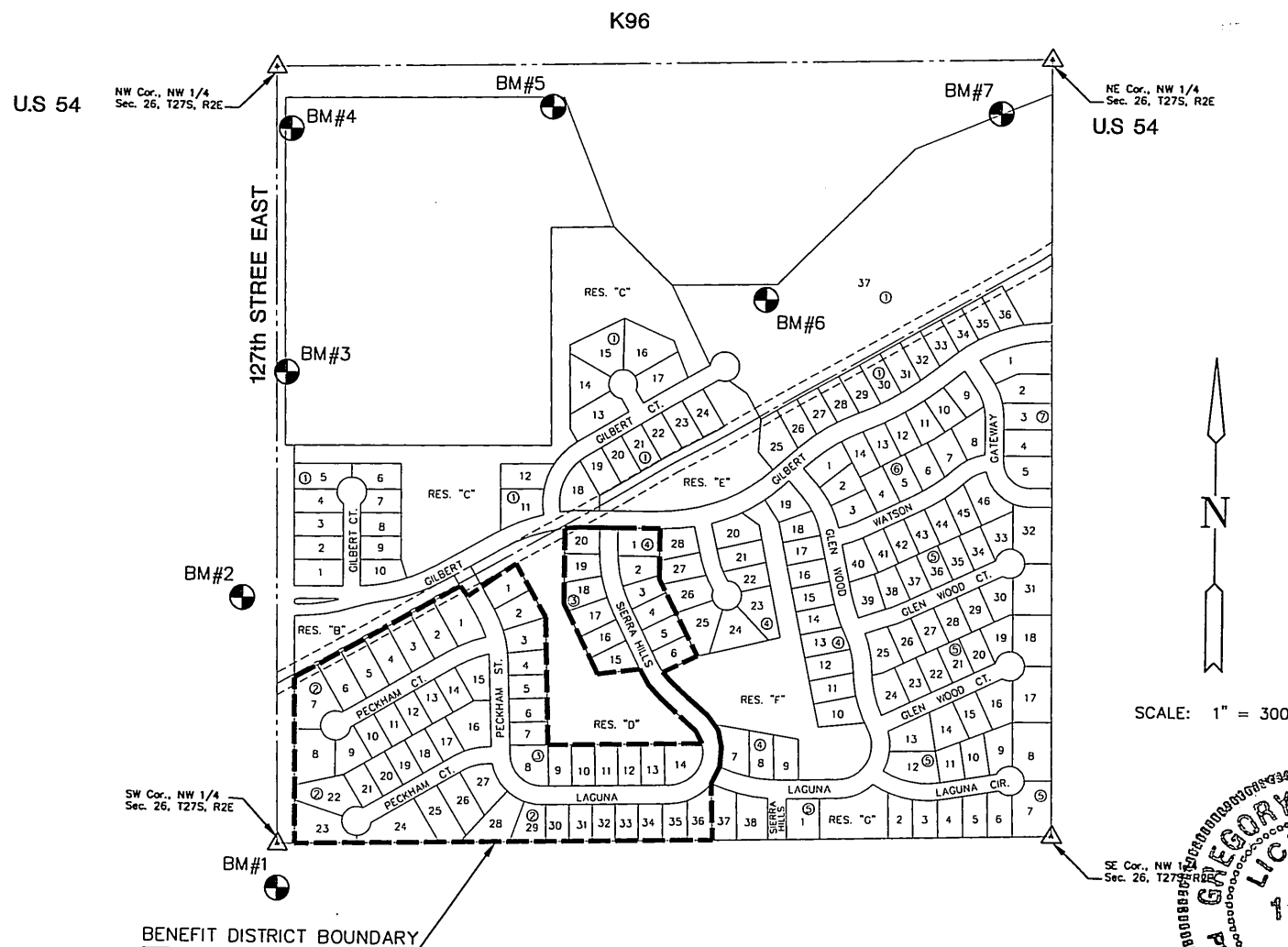
PAVING PLANS  
**COUNTRY HOLLOW**  
PHASE 1

## INDEX TO DRAWINGS

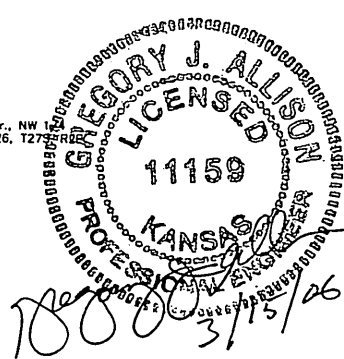
SHEET NO.	DESCRIPTION
1	TITLE SHEET
2-5	PAVING DETAILS
6	SIGNING DETAILS
7	INLET DETAILS
8	PECKHAM ST.
9	PECKHAM ST. & LAGUNA
10	LAGUNA & SIERRA HILLS
11	SIERRA HILLS
12	SIERRA HILLS
13	PECKHAM CT. (NORTH)
14	PECKHAM CT. (NORTH & SOUTH)
15	PECKHAM CT. (SOUTH)
16-18	BMP DETAILS
19-26	CROSS SECTIONS
27	BUBBLE MAP
28-29	PLAT

## BENCHMARKS

- BM #1 Railroad spike in South face of power pole, 25' +/- East and 70' +/- South of West Quarter Corner of Sec. 26, T 27 S, R 2 E.  
Elev. = 1337.50 (NGVD)
- BM #2 Chiseled square on top of curb at East end of median island on Lincoln on West side of 127th Street East.  
Elev. = 1349.55 (NGVD)
- BM #3 Railroad spike in Southwest face of power 4th pole South of Kellogg on East Side of 127th Street East, 973' South and 24' East of Northwest Corner Sec. 26, T 27 S, R 2 E.  
Elev. = 1353.93 (NGVD)
- BM #4 Fence T-post at Northwest corner of property, 40' East of centerline 127th And 10' South of the South Kellogg right of way.  
Elev. = 1360.81 (NGVD)
- BM #5 Fence T-post 10' South and 10' West of highway right of way corner, West side K-96 Interchange and South side Kellogg, 969' East and 122' South of Northwest corner Sec. 26, T 27 S, R 2 E.  
Elev. = 1346.25 (NGVD)
- BM #6 Fence T-post 10' South and 10' West of highway right of way corner, East Side of K-96 Interchange and South side of Kellogg, 1696' East and 770' South of the Northwest corner Sec. 26, T 27 S, R 2 E.  
Elev. = 1342.08 (NGVD)
- BM #7 Fence T-post 4' South of South Kellogg right of way fence, 145' West-Southwest of the Northeast property corner, 135' West and 176' South of the North Quarter corner of Sec. 26, T 27 S, R 2 E.  
Elev. = 1326.40 (NGVD)



SCALE: 1" = 300'



**TITLE SHEET**  
SHEET TITLE  
**472-84328**  
PROJECT NUMBER

DESIGN BY  
**DFL**  
DRAWN BY  
**MUK/DMU**  
CHECKED BY  
**GJA**

ISSUED  
**MARCH 2006**  
REVISED

SHEET NO.  
**1 of 29**