

PAVING PLANS
COUNTRY HOLLOW
PHASE 1

PECKHAM CT. (SOUTH)

SHEET TITLE
472-84328
PROJECT NUMBER

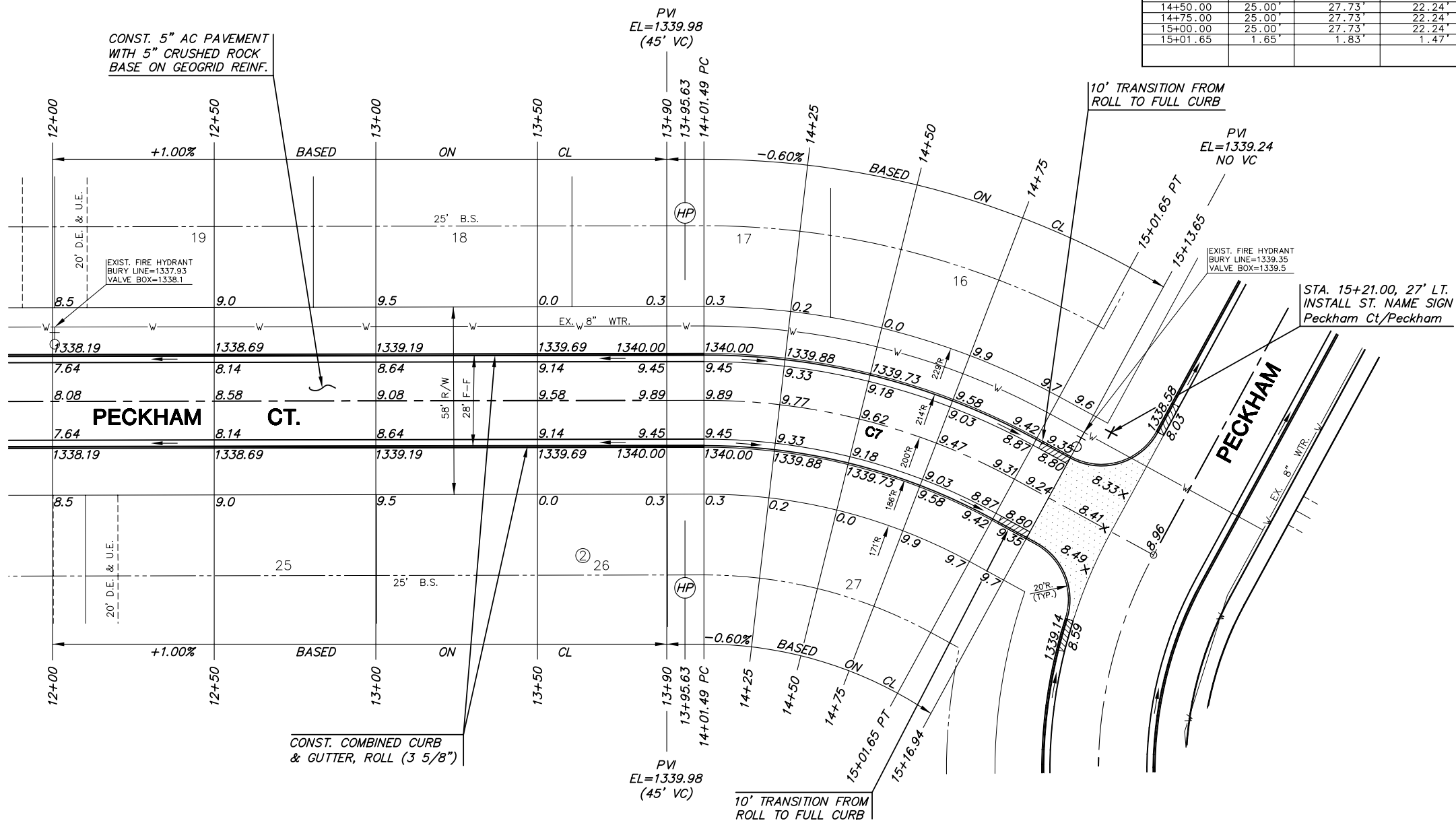
DESIGN BY: DFL
DRAWN BY: MKEC
CHECKED BY: GJA

ISSUED
MARCH 2006

SHEET NO.

15 of 29

CURVE TABLE (C7)					
$\Delta = 28^{\circ}41'34''$ R = 200.00' T = 51.15' L = 100.16' LC = 99.11'					
CURVE DATA BASED ON CENTERLINE $\Delta / 2 = 14^{\circ}20'47''$					
STATION	ARC	CHORD LENGTH		DEFLECTION	TOTAL DEFLECTION
		8' Off LtCb	8' Off RtCb		
14+01.49	-	-	-	00°00'00"	00°00'00"
14+25.00	23.51'	26.08'	20.91'	03°22'03"	03°22'03"
14+50.00	25.00'	27.73'	22.24'	03°34'52"	06°56'55"
14+75.00	25.00'	27.73'	22.24'	03°34'52"	10°31'46"
15+00.00	25.00'	27.73'	22.24'	03°34'52"	14°06'38"
15+01.65	1.65'	1.83'	1.47'	00°14'09"	14°20'47"
					Def/Ft = 8.59437 Min.

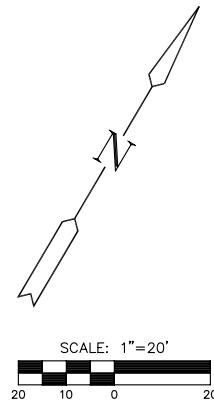


COUNTRY HOLLOW ADDITION

LEGEND

⊕ STREET SIGN & SIGN LOCATION (SEE SIGN ASSEMBLY TABLE FOR TYPE & STATION OF SIGN)

NOTE: TOP OF CURB ELEVATIONS SHOWN ARE FOR FULL CURB. CONSTRUCT CURB AND GUTTER AS NOTED.



SUBDIVISION BENCH MARKS				
NO.	STREET AND STATION	FROM CL	DESCRIPTION	ELEVATIONS
1	PECKHAM 13+43.59	17.5' RT	SOUTH END OF SOUTH RETURN OF PECKHAM CT.	
2	PECKHAM 17+12.30	17.5' RT	SOUTH END OF SOUTH RETURN OF PECKHAM CT.	
3	LAGUNA 24+70.72	17.5' RT	SOUTH END OF SOUTH RETURN OF LAGUNA	
4	PECKHAM CT. 9+91.80	35.5' RT	EAST SIDE OF INLET RETURN	
5	PECKHAM CT. 11+21.70	14.5' RT	NOTH INLET, EAST RETURN	

NOTE: CONTRACTOR SHALL INSTALL SUBDIVISION BENCH MARKS ("FLAT SURVEY MARKERS NO. 8134-08 3" TOP DIAMETER" PROVIDED BY KANSAS BLUE PRINT CO., INC.) COSTS TO BE CONSIDERED SUBSIDIARY TO CONSTRUCTION OF COMBINED CURB AND GUTTER.