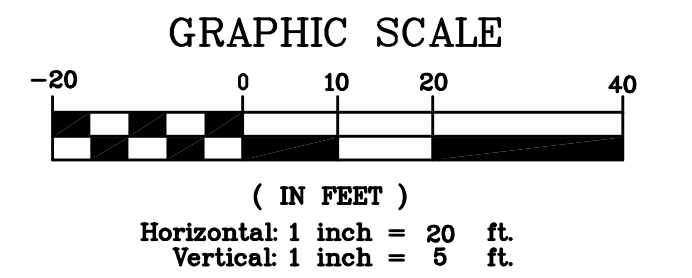


Sta. 20+01.81, SWS Line No. 1
Begin Installation of 15" RCP
W/End Section.
Install 10 S.Y. of 6" D-50 Stone
Rip Rap.
(12" Excavation Shall be
Performed for Rip Rap placement)
FL Out=115.70
N 2101.78 (Ctr. End Point
E 1632.92 of End Section)

Sta. 21+00.00, SWS Line No. 2
Construct Std. 4' Dia. Shallow
Type 'P' MH Over Exist. 22"X13"
CMMAC.
Top Elev.=119.78
FL In 13"(E)=115.05
FL Out 13"(W)=115.05
FL In 15"(N)=115.28
N 1987.36
E 1538.40

Sta. 22+11.00, SWS Line No. 2
End 15" RCP W/End Section.
Install 15 S.Y. of 6" D-50 Stone
Rip Rap.
(12" Excavation Shall be Performed
for Rip Rap placement)
FL In=115.70
N 2098.33 (Ctr. End Point
E 1535.81 of End Section)

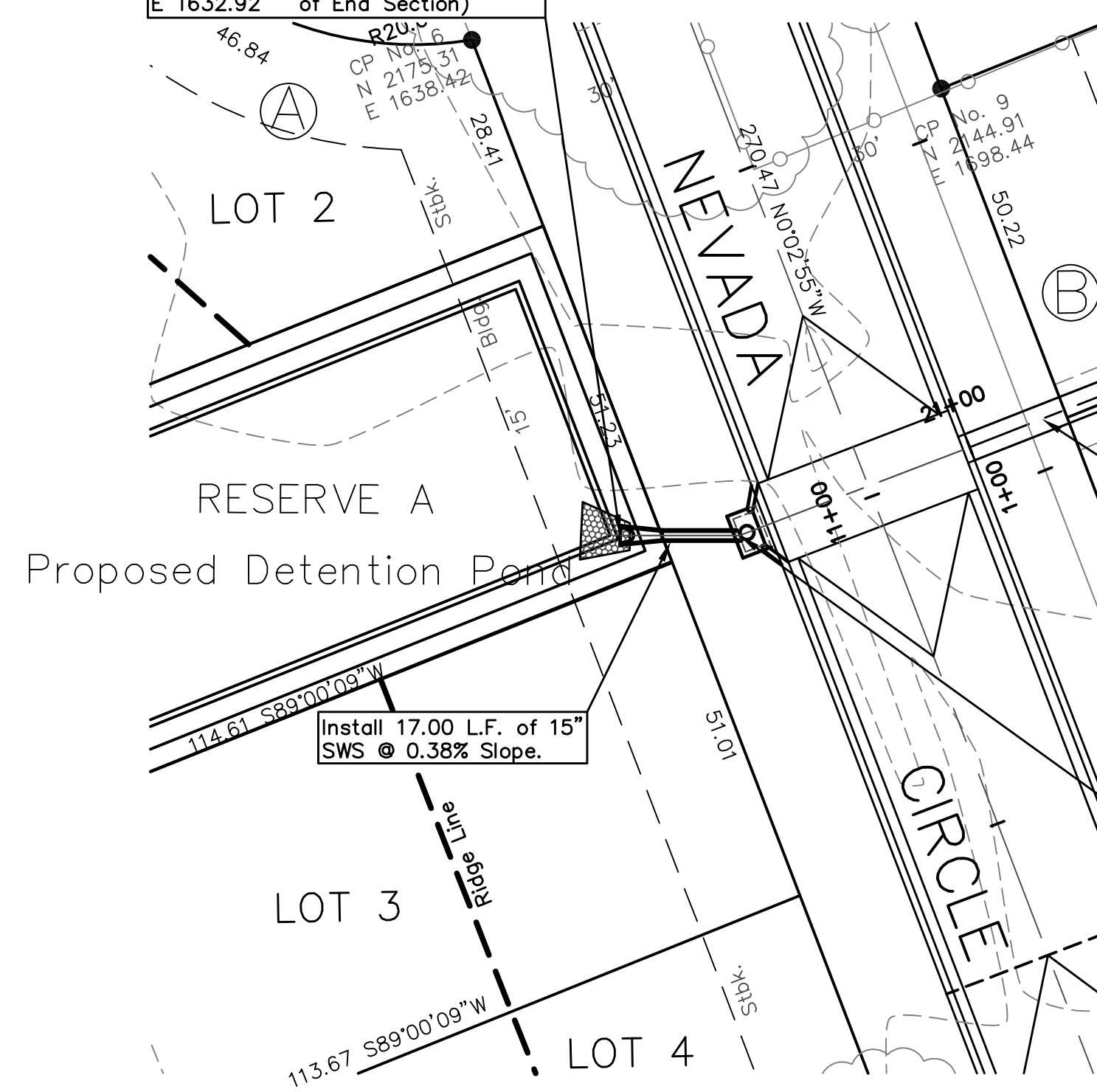


LEGEND

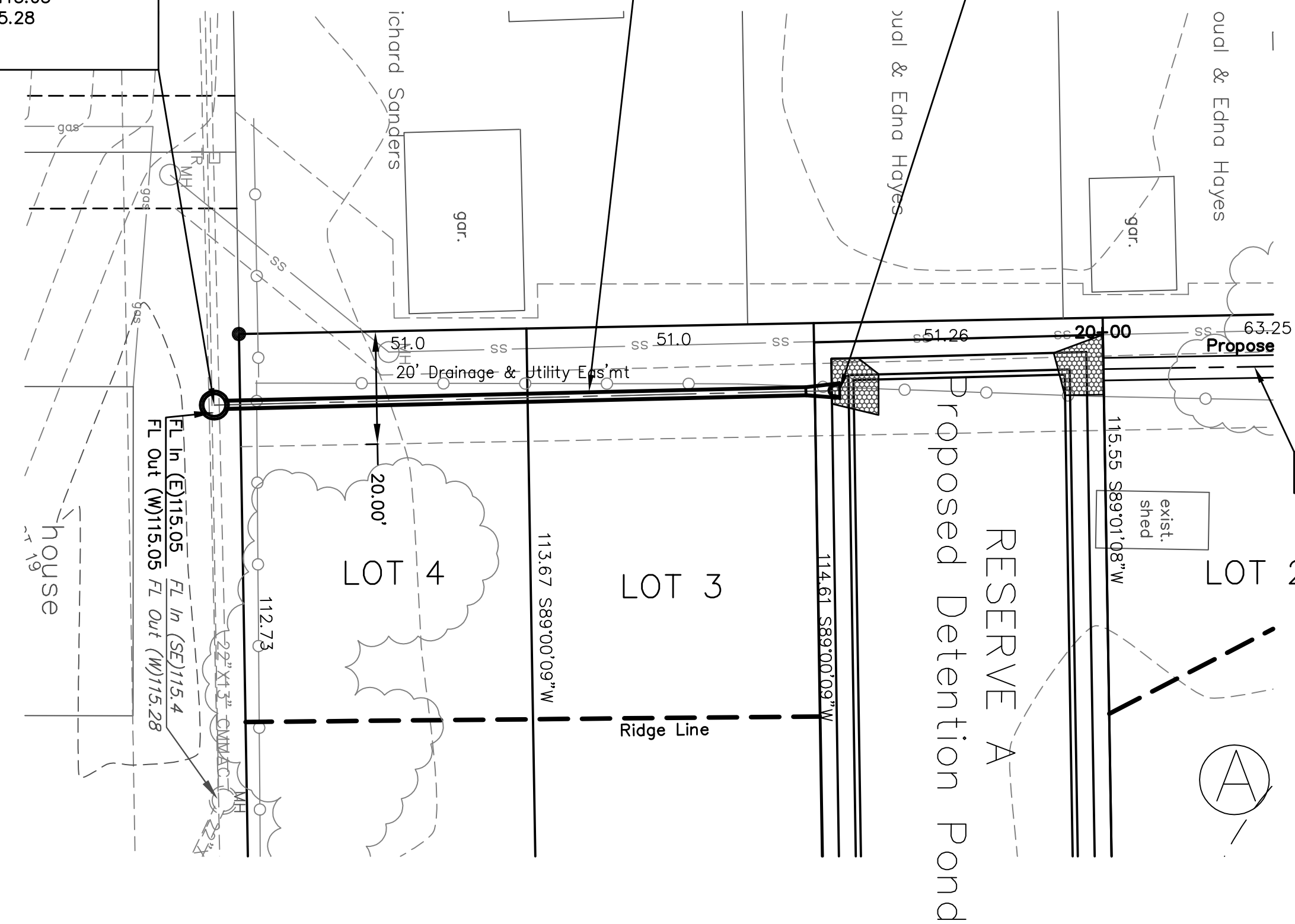
- - set 5/8" rebar & "Armstrong" cap
- - iron in thimble
- ⊙ - found 3/4" iron pipe
- - found 1/2" iron pipe
- ⊗ - found chiseled in concrete
- ⊠ - found chiseled in concrete
- M - measured distance
- P - plat distance
- cm - calculated from measured distance
- - property line
- - - - center line
- - - - easement line
- - - - setback line
- - - - underground utility
- - chainlink fence
- ▨ - Proposed 6" D-50 Stone Rip Rap
- - cable TV riser
- - telephone riser
- - fire hydrant
- ⊠ - elec. transformer
- ⊠ - air conditioner
- - power pole
- - manhole
- - light pole
- - gas meter
- - gas valve
- - water meter
- - water valve
- - tree

BENCHMARK:
Located at Top Southeast Corner of
Existing SWS Inlet Located 30.26 L.F.
West & 17.10 L.F. North of Center of
Nevada Str. Cul-de-sac. SE ¼, Sec.
23, Twp. 27-S, R-1-W.
Elev.=118.48

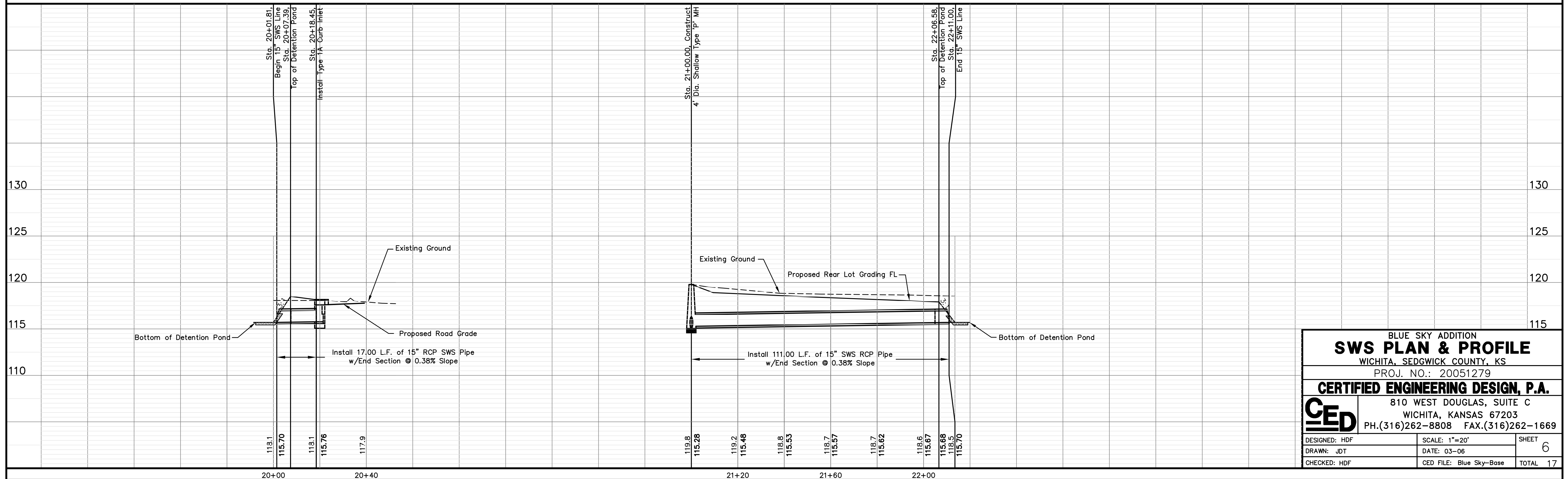
UTILITIES SHOWN REPRESENT THE BEST
INFORMATION AVAILABLE FOR DESIGN.
ADDITIONAL UTILITIES MAY BE PRESENT ON THIS
PROJECT. THE CONTRACTOR SHALL BE
RESPONSIBLE FOR DETERMINING THE EXACT
LOCATION, DEPTH AND SIZE OF ALL
UNDERGROUND UTILITIES PRIOR TO
CONSTRUCTION. THE CONTRACTOR SHALL BE
LIABLE FOR ANY DAMAGE CAUSED BY THE
FAILURE TO DO SO.



SWS LINE NO. 1



SWS LINE NO. 2



BLUE SKY ADDITION
SWS PLAN & PROFILE
WICHITA, SEDGWICK COUNTY, KS
PROJ. NO.: 20051279
CERTIFIED ENGINEERING DESIGN, P.A.
810 WEST DOUGLAS, SUITE C
WICHITA, KANSAS 67203
PH.(316)262-8808 FAX.(316)262-1669

DESIGNED: HDF	SCALE: 1"=20'	SHEET
DRAWN: JDT	DATE: 03-06	6
CHECKED: HDF	CED FILE: Blue Sky-Base	TOTAL 17