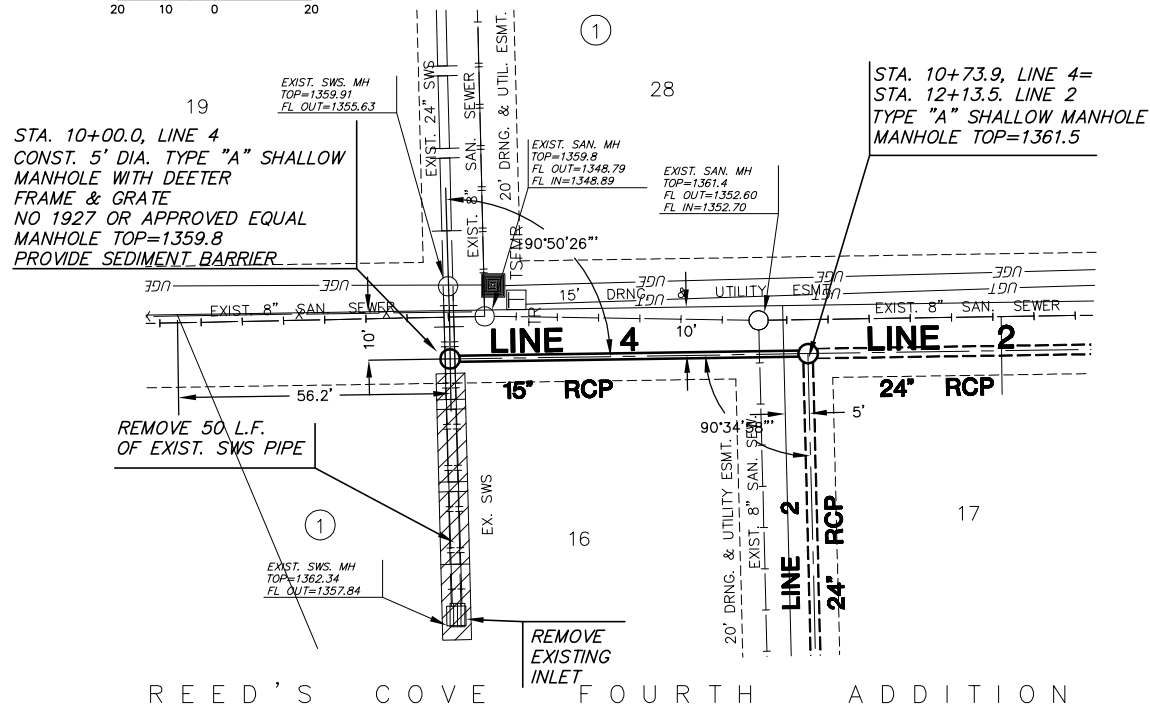
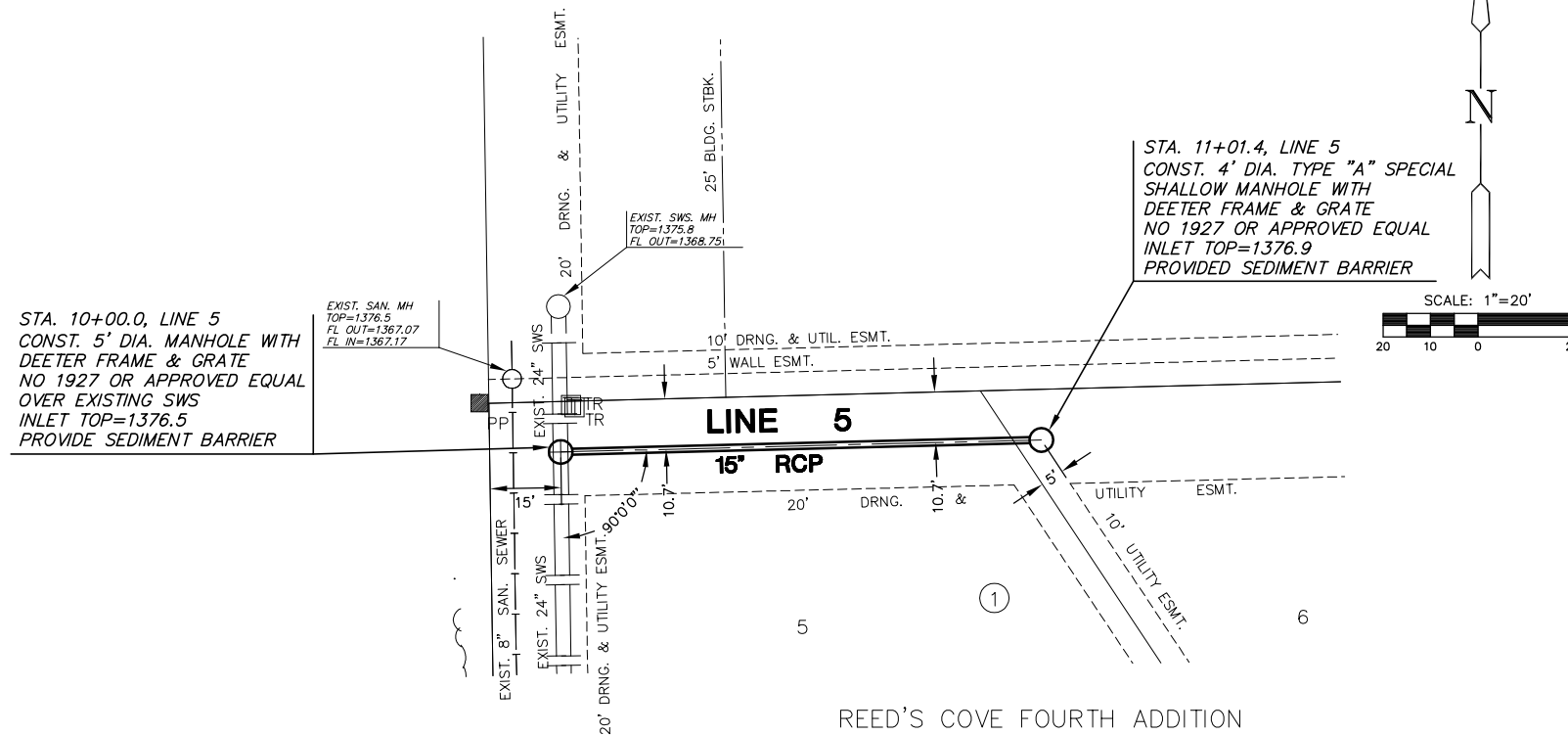


REED'S COVE ADDITION

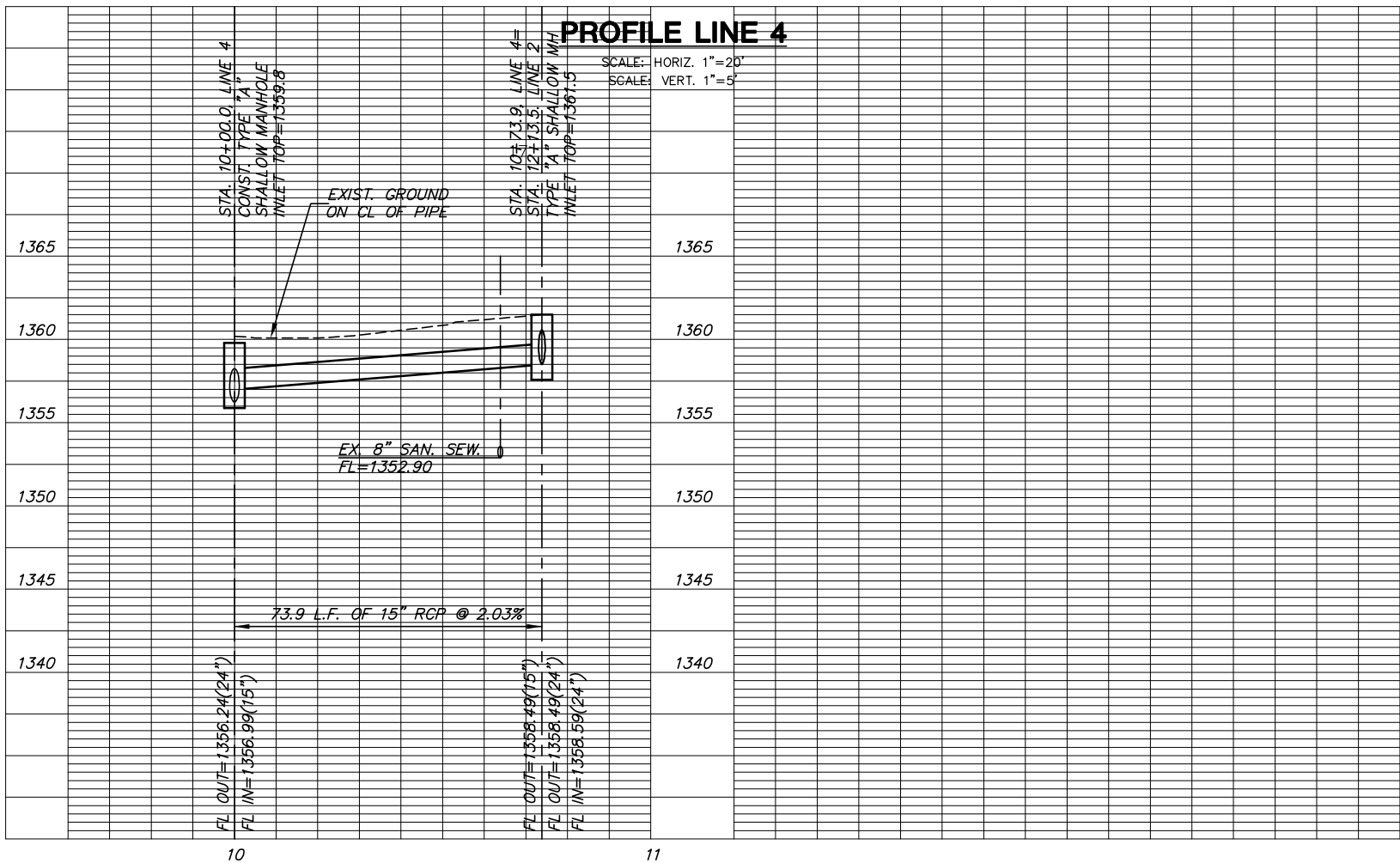


PLAN LINE 4

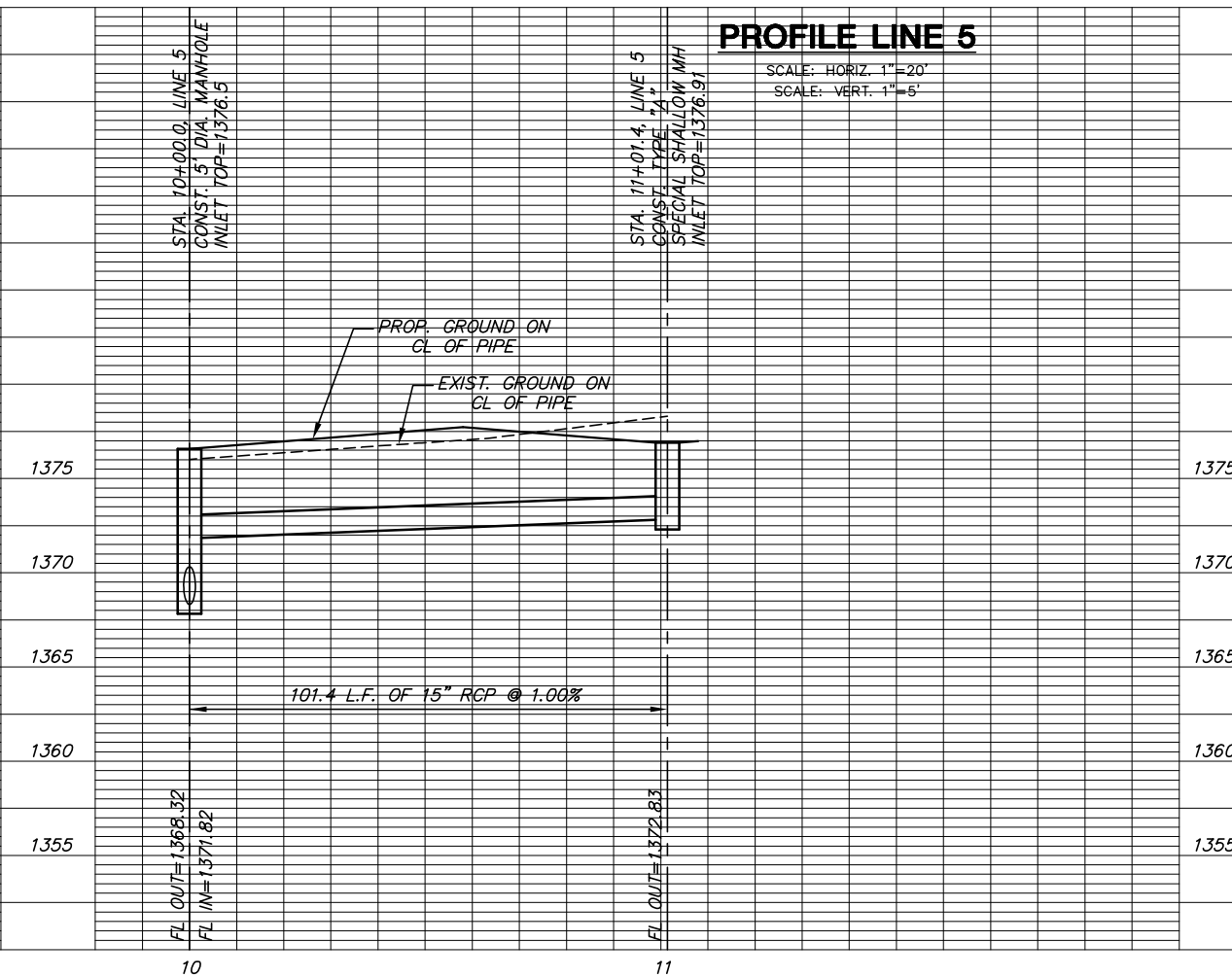
REED'S COVE ADDITION



PLAN LINE 5



PROFILE LINE 4



PROFILE LINE 5

**MKEC**  
ENGINEERING  
CONSULTANTS, INC.  
411 N. WEBB ROAD  
WICHITA, KS. 67206  
316-684-9600

PAVING STREETS & INCIDENTAL DRAINAGE  
**REED'S COVE 4TH ADDITION**  
WICHITA KANSAS

**LINE 4 & LINE 5**  
SHEET TITLE  
PROJECT NUMBER 02121

DESIGN BY SRS  
DRAWN BY BFL  
CHECKED BY GJA

ISSUED MARCH 2006  
REVISED

SHEET NO.  
**19 of 33**

H:\CIVIL\02121\4th Addition\PAV\BND\02121.D7

PLOTTED: Wednesday, March 15, 2006 @ 05:45AM