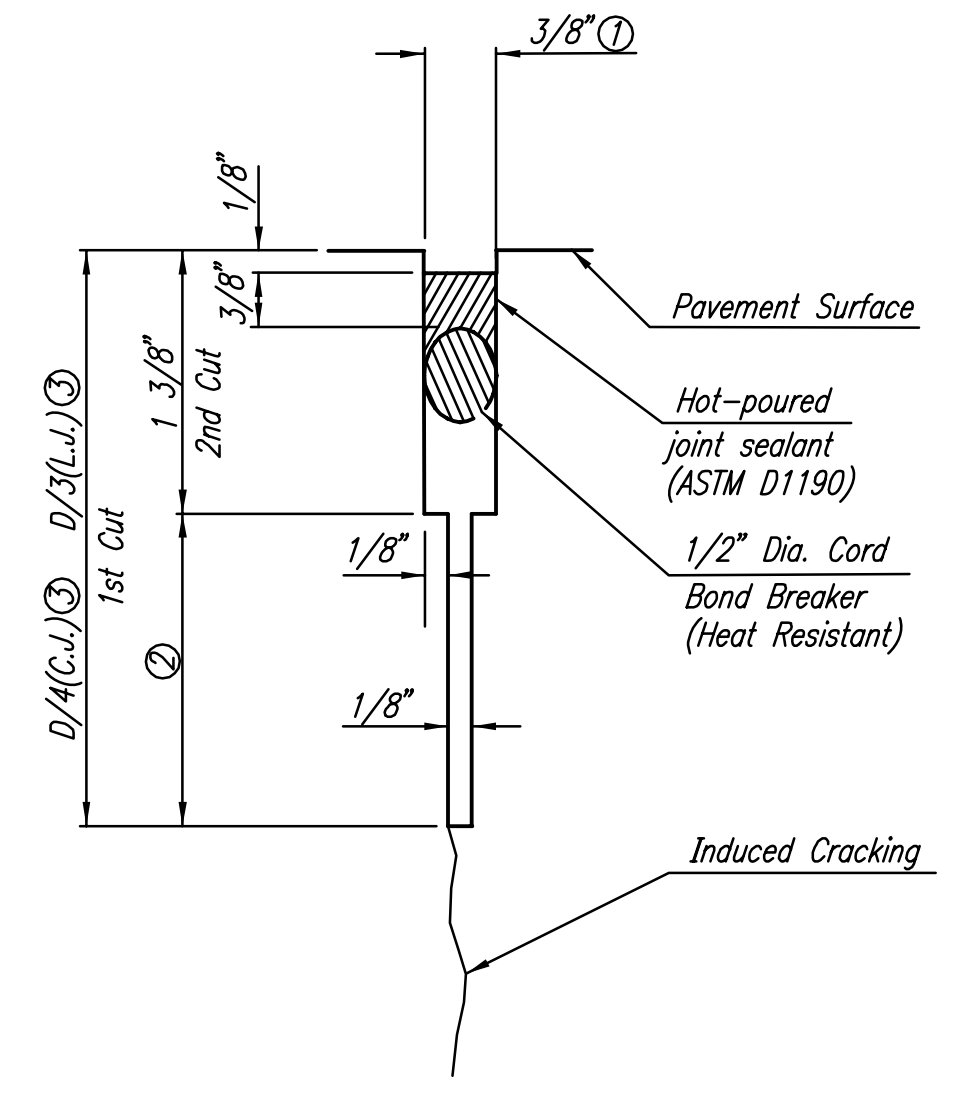
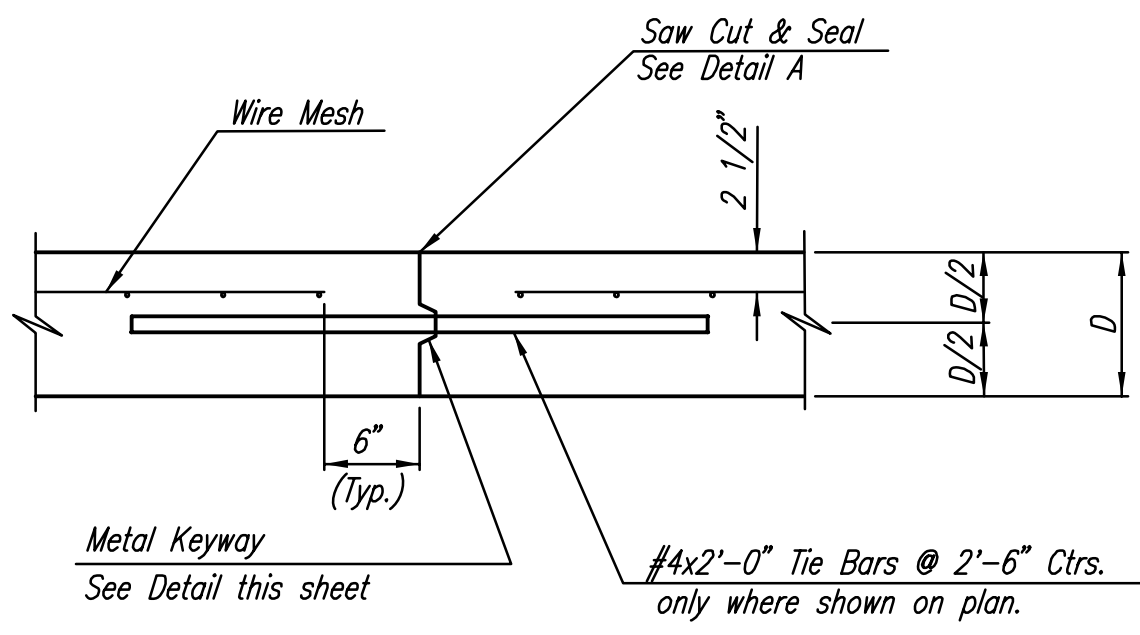


**WING REINFORCING DETAIL**  
NOTE: OMIT WIRE FABRIC REINFORCING IN THIS SECTION.

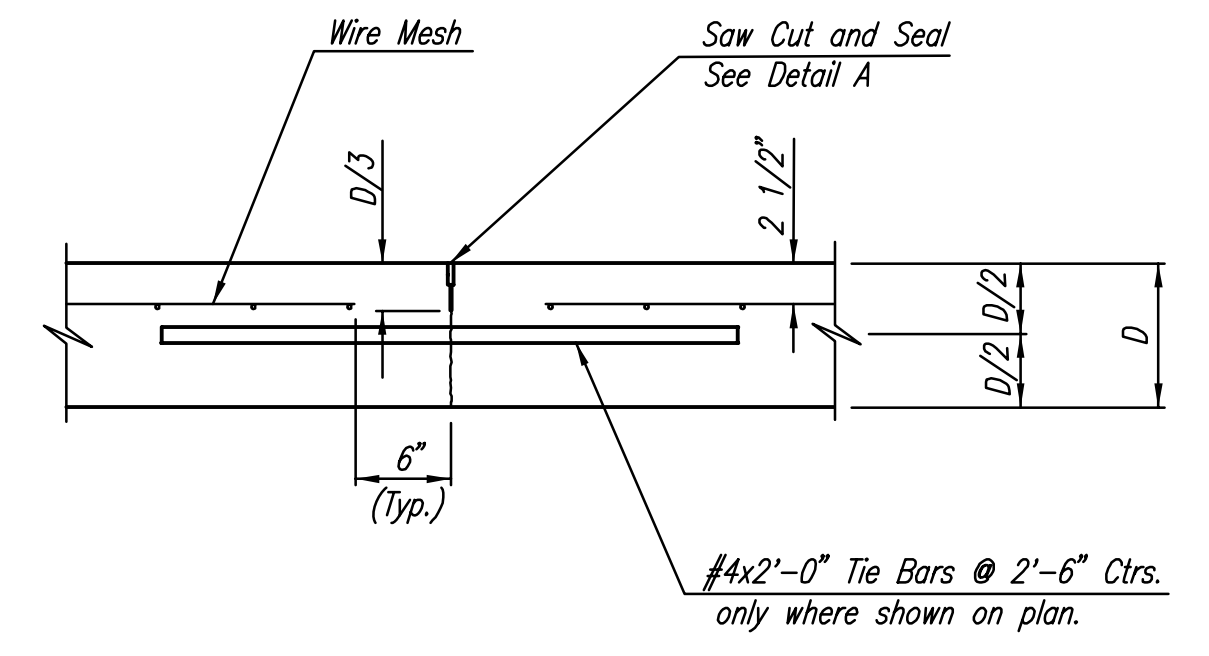


**DETAIL A**

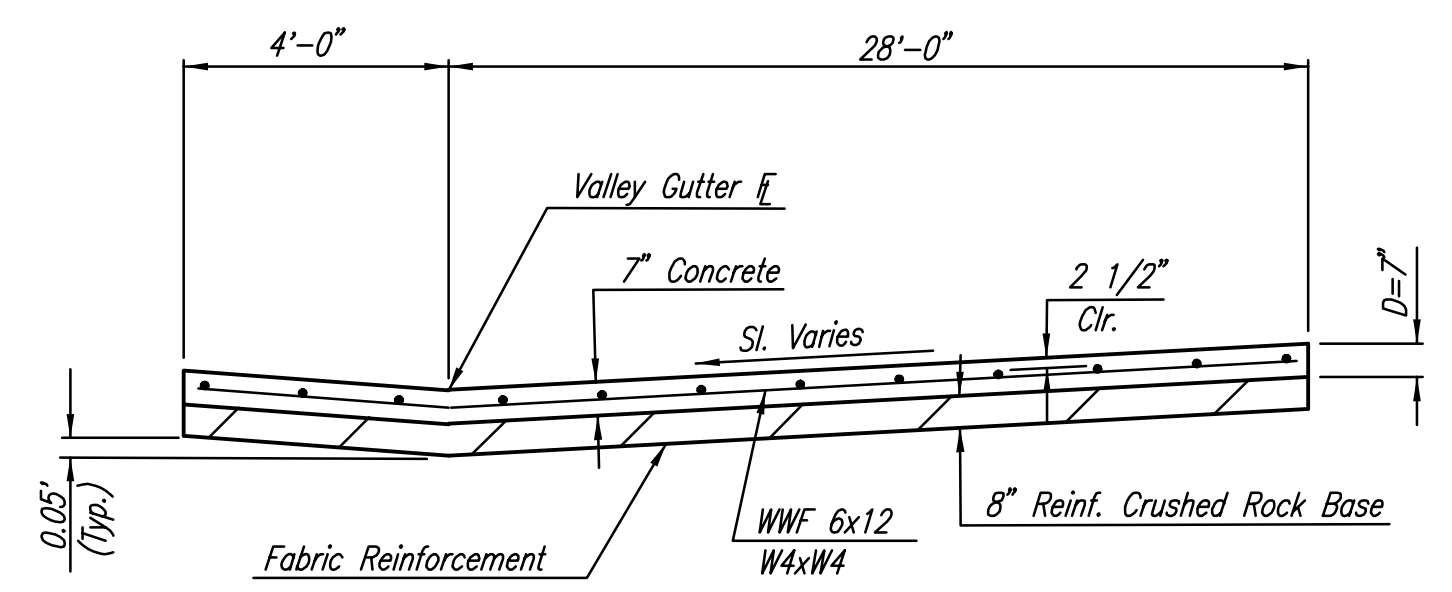
- ① To be accomplished in 2 cuts for Longitudinal Joints and Contraction Joints. Initial cut to be 1/8" wide.
- ② Eliminate bottom of cut when metal keyway is used as part of Longitudinal or Transverse Construction Joint and at Doweled Construction Joint Locations.
- ③ 1 1/2" Minimum



**LONGITUDINAL CONSTRUCTION JOINT DETAIL  
REINFORCED PAVEMENT  
(TRANSVERSE SECTION)  
(ALTERNATE L.J.)**

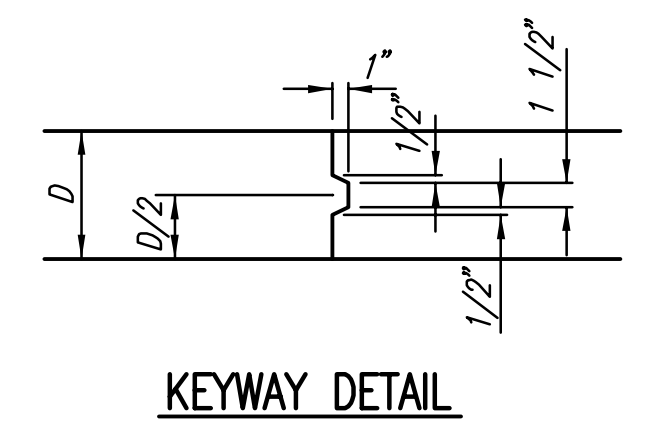


**LONGITUDINAL JOINT DETAIL  
REINFORCED PAVEMENT  
(TRANSVERSE SECTION)  
(L.J.)**

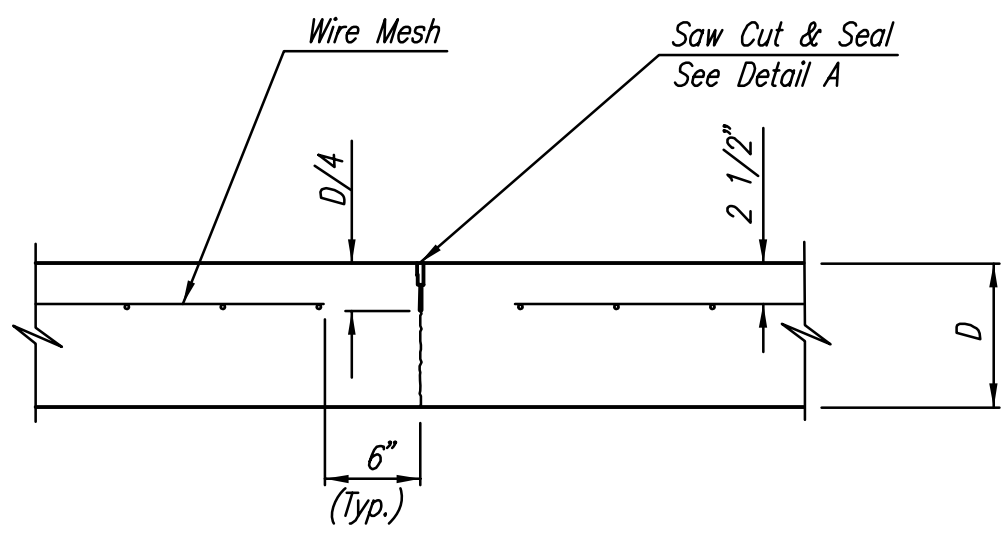


**SECTION A-A**

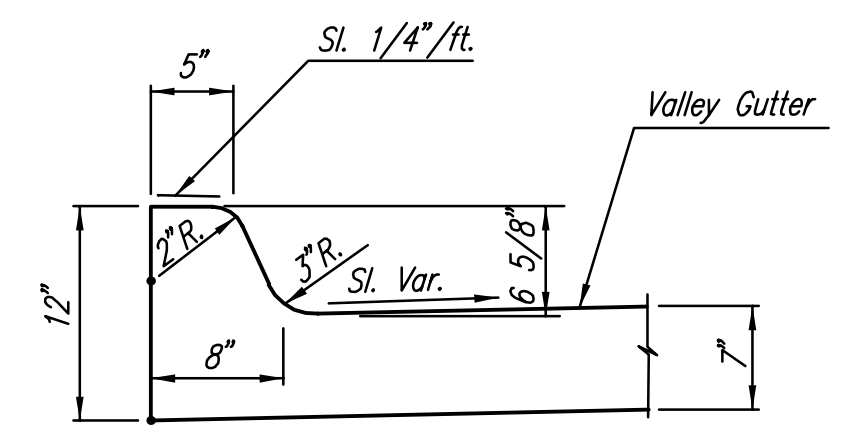
NOTE: OMIT REINFORCING MESH AT ALL JOINTS  
NOTE: ALL CONCRETE VALLEY GUTTER REINFORCEMENT SHALL BE ADEQUATELY SUPPORTED BY BAR CHAIRS IN THE REQUIRED POSITION UNLESS APPROVED OTHERWISE BY THE ENGINEER.



**KEYWAY DETAIL**

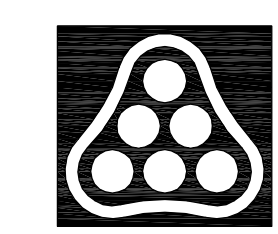


**CONTRACTION JOINT DETAIL  
REINFORCED PAVEMENT  
(C.J.)**



**DETAIL B**

Saved: 06-01-2006 6:40:02 AM by BEJ  
 Plot Scale: 1:10 06-05-2006 5:11:49 PM by BEJ  
 J:\SENTOU\2004\04688\003\2006-06-05 to City of Wichita\DWG\10-ValleyGutterDetail



No.	Revision	By	Date
	OAK CREEK-PHASE 1 21ST ST. N. DECEL LANE <b>VALLEY GUTTER DETAILS</b> JAMES L. ARMOUR, P.E. - CITY ENGINEER CITY OF WICHITA PROJECT NO. 472-84206 <b>Professional Engineering Consultants, P.A.</b> 303 S. TOPEKA • WICHITA, KANSAS 67202 316-262-2691 • FAX 316-262-3003		
Designed by	BDB, BLB	Job No.	35-04688-003
Drawn by	BJS, JMU	Date	January 2005
			Sheet 10 of 28