

# OAK CREEK

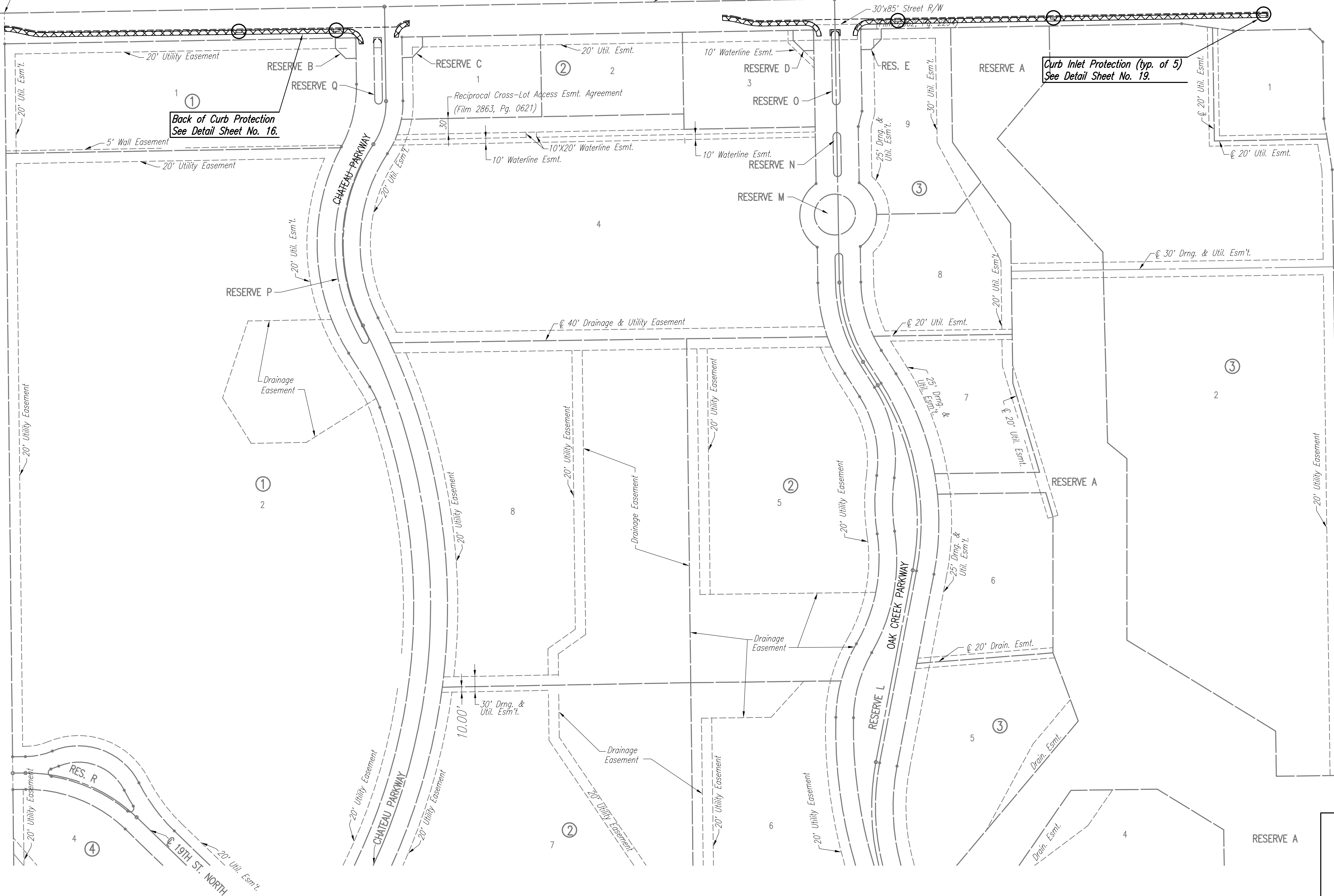
## AN ADDITION TO WICHITA, SEDGWICK COUNTY, KANSAS

N.W. Cor. NE1/4  
Sec. 9, T27S, R2E  
Found #9 Bar w/ MKEC Cap

N.E. Cor. Sec. 9  
T27S, R2E  
Found Chiseled "+"  
In Concrete

21ST STREET NORTH

30'x85' Street R/W



Back of Curb Protection  
See Detail Sheet No. 16.

Curb Inlet Protection (typ. of 5)  
See Detail Sheet No. 19.

SCALE: 1"=100'

### GENERAL NOTES

1. THE EROSION CONTROL DEVICES SHOWN ON THIS SHEET ARE CONSIDERED MINIMUM STANDARDS. WHENEVER SEDIMENT ENTERS THE STREETS, STORM SEWERS, DITCHES, OR PONDS, CONTRACTOR WILL INSTALL ADDITIONAL DEVICES, AS NEEDED, TO CORRECT THE PROBLEM.
2. THE EROSION CONTROL DEVICES SHOWN HEREON MUST BE IN PLACE AT ALL TIMES DURING CONSTRUCTION UNTIL SUCH TIME AS THE SITE IS REESTABLISHED WITH PAVING OR GRASS. TEMPORARY OR PERMANENT SEED AND MULCH WILL BE INSTALLED WHEN EARTHWORK ACTIVITIES CEASE IN AN AREA FOR 14 DAYS OR MORE.
3. BACK OF CURB PROTECTION: AS SHOWN ON CITY STANDARD DETAILS. THESE DEVICES MUST REMAIN IN PLACE UNTIL THE AREA BETWEEN THE CURB AND RIGHT-OF-WAY LINE HAS BEEN PERMANENTLY STABILIZED.
4. ANY MUD INADVERTENTLY TRACKED ONTO ANY STREET WILL BE CLEANED UP BY THE CONTRACTOR, AT THE END OF EACH DAY'S WORK.
5. CONTRACTOR TO FURNISH A TRUCK WASH-OUT PIT TO BE PLACED AT A CONVENIENT LOCATION THAT DOES NOT CONFLICT WITH CONSTRUCTION. CONTRACTOR SHALL CLEAN OUT AND BACKFILL PIT PRIOR TO FINAL INSPECTION.

### LEGEND

- Curb Inlet Protection
- Back of Curb Protection

Saved: 06-01-2006 6:51:36 AM by BEJ  
 Plot Scale: 1:100 06-05-2006 5:08:55 PM by BEJ  
 J:\SENTOU\2004\04688\03\2006-06-05 to City of Wichita\DWG\15-Erosion Control Plan

No.	Revision	By	Date
OAK CREEK-PHASE 1 21ST ST. N. DECEL LANE <b>EROSION CONTROL (BMP) PLAN</b> JAMES L. ARMOUR, P.E.- CITY ENGINEER CITY OF WICHITA PROJECT NO. 472-84206 <b>Professional Engineering Consultants, P.A.</b> 303 S. TOPEKA • WICHITA, KANSAS 67202 316-262-2691 • FAX 316-262-3003			
Designed by	BDB, BLB	Job No.	35-04688-003
Drawn by	TLB	Date	January 2005
			Sheet 15 of 28

