

# 21ST ST. N. DECEL LANE IMPROVEMENTS

84229

TO SERVE  
**CROSS POINTE (PHASE 1)**  
THE ENTRANCE BETWEEN LOTS 4 AND 5, BLOCK 1

OCA NO. 765979  
CITY OF WICHITA PROJECT NO. 472-84229  
**CITY OF WICHITA, KANSAS**  
JAMES L. ARMOUR, P.E. - CITY ENGINEER

**INDEX OF SHEETS**

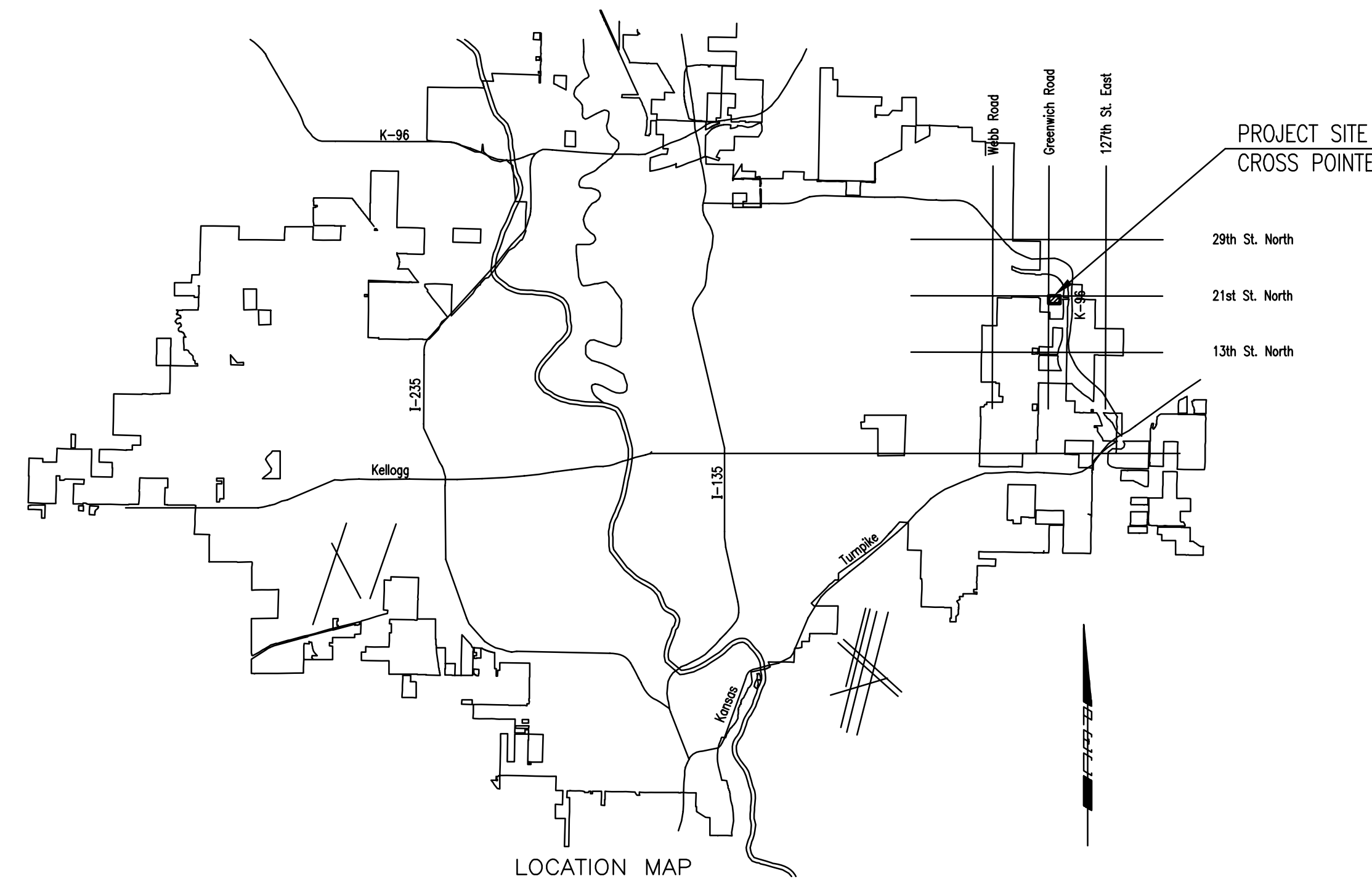
1.	TITLE SHEET
2.	KEY MAP AND GENERAL NOTES
3.	PLAT
4.	TYPICAL SECTION
5.	PAVING PLAN
6.	VALLEY GUTTER DETAILS
7.	STANDARD TYPE 1 CURB INLET (10' OPENING)
8.	EROSION CONTROL PLAN
9-10.	EROSION CONTROL DETAILS
11-12.	CROSS SECTIONS

PROJECT LENGTH = 293 LIN. FT.

EARTHWORK

EXCAVATION 451 CU. YDS.\*  
\* SEE NOTE 5, SHEET NO. 4.

EXCESS EXCAVATED MATERIAL SHALL BE  
DISPOSED OF ON A SITE PROVIDED BY THE  
CONTRACTOR AND APPROVED BY THE ENGINEER.



WORK ON THIS PROJECT SHALL  
BE COMPLETED BY MAY 19, 2006.

**FEBRUARY 2006**

PLANS PREPARED BY  
**PROFESSIONAL ENGINEERING CONSULTANTS, P.A.**  
ENGINEERS  
WICHITA, KANSAS