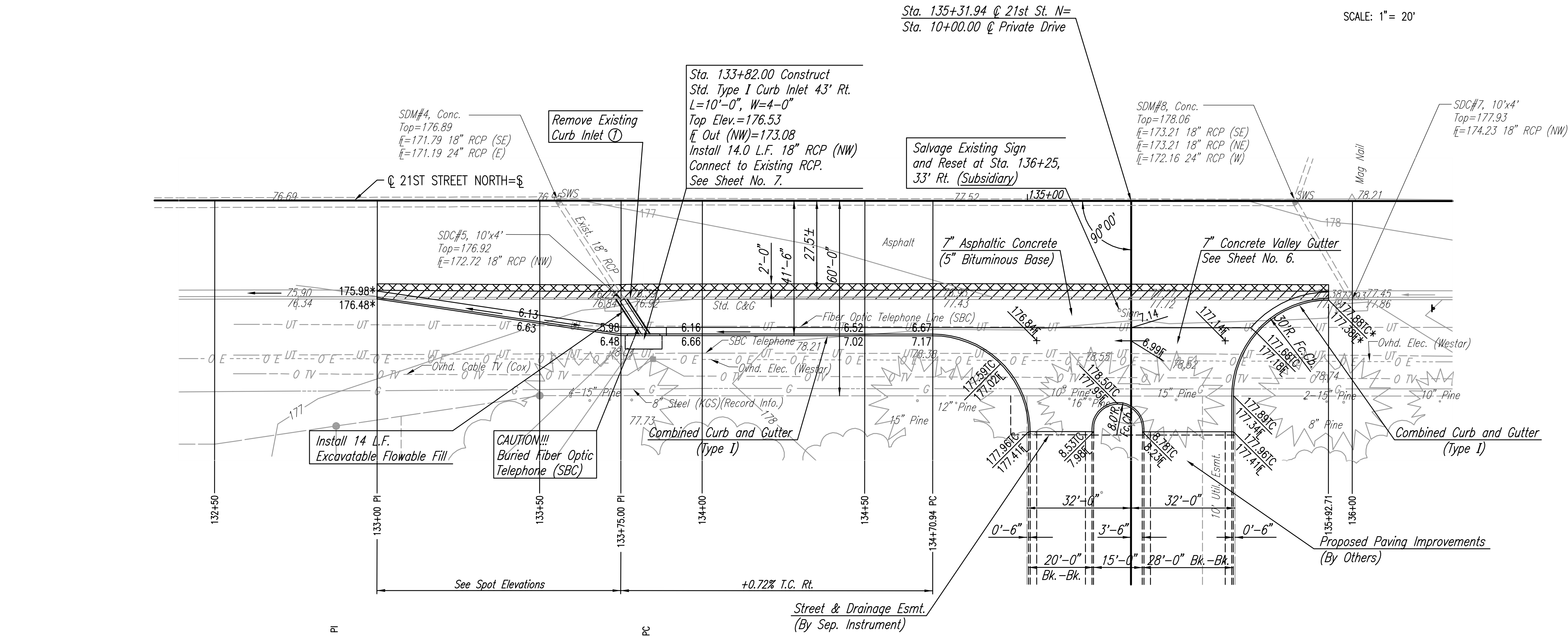


SCALE: 1" = 20'



① Backfill overexcavated area as necessary and compact to minimum 90% std. density, or as otherwise required for pipe backfill. At contractor's option, this backfill may be accomplished using flowable fill. This work, including optional use of flowable fill, shall be considered Subsidiary to removal of the existing inlet.

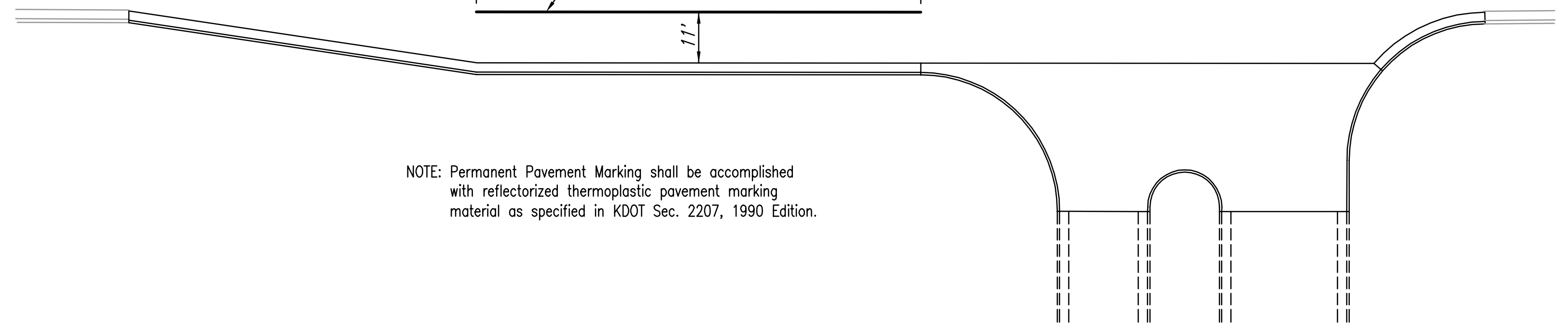
Saw Cut, Remove and Replace Asphalt Surface (Subsidiary to 7" A.C. Pavt.)

Remove Combined Curb and Gutter

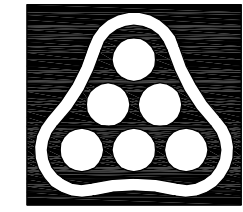
\* Match Existing

NOTE: Permanent Pavement Marking shall be accomplished with reflectorized thermoplastic pavement marking material as specified in KDOT Sec. 2207, 1990 Edition.

**MARKING PLAN**



S:\02-13-2006 2:00:32 PM by: AMJ  
 Plot Scale 1:20 02-13-2006 3:25:04 PM by: REJ  
 J:\SENTOU\2005\05548\2006-02-13 to City\DWG\04-21 ST-NORTH-S1R133-136



No.	Revision	By	Date
CROSS POINTE-PHASE 1 21ST ST. N. DECEL LANE <b>PAVING PLAN</b> JAMES L. ARMOUR, P.E. - CITY ENGINEER CITY OF WICHITA PROJECT NO. 472-84229 <b>Professional Engineering Consultants, P.A.</b> 303 S. TOPEKA • WICHITA, KANSAS 67202 316-262-2691 • FAX 316-262-3003			
Designed by	BDB, BMM	Job No.	35-05548-000
Drawn by	BMM, BJS	Date	October 2005
			Sheet 5 of 12