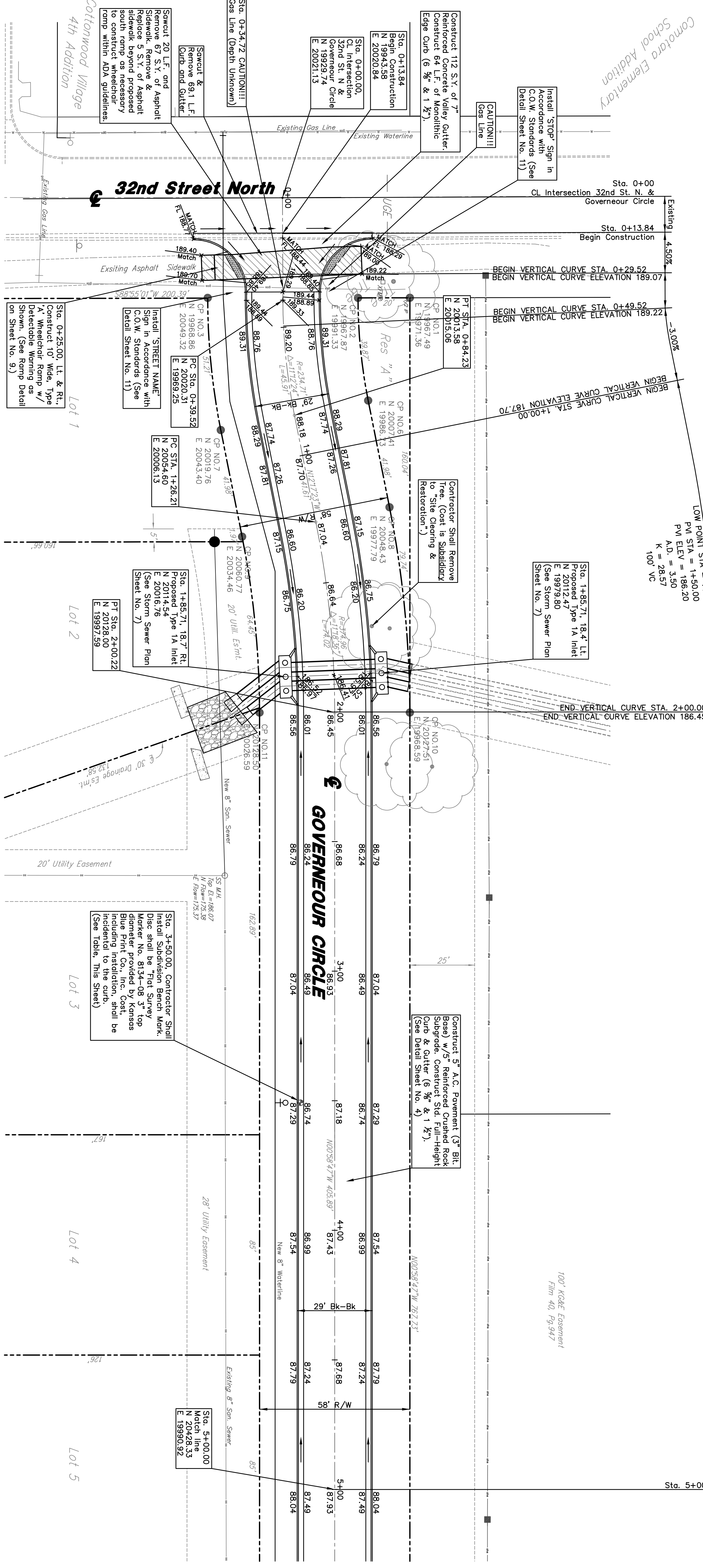


LEGEND

- $1/2" \phi$ = 1/2" iron pipe (found)
- $5/8" \phi$ = 5/8" rebar (found)
- $3/4" \phi$ = 3/4" iron pipe (found), F.E.C. cap
- \oplus = benchmark
- \ominus = Cable T.V.
- \square = Electric Box
- --- = fence
- --- = fire hydrant
- --- = gas
- --- = high line power pole
- --- = overhead electric
- \bullet = power pole
- --- = sanitary sewer
- --- = sign
- --- = telephone pedestal
- \square = transformer
- --- = tree
- --- = underground electric
- --- = underground telephone
- --- = water



GRAPHIC SCALE

(IN FEET)
Horizontal: 1 inch = 20 ft
Vertical: 1 inch = 5 ft

UTILITIES SHOWN REPRESENT THE BEST INFORMATION AVAILABLE FOR DESIGN. ADDITIONAL UTILITIES MAY BE PRESENT ON THIS PROJECT. THE CONTRACTOR SHALL BE RESPONSIBLE FOR DETERMINING THE EXACT LOCATION, DEPTH AND SIZE OF ALL UNDERGROUND UTILITIES PRIOR TO CONSTRUCTION. THE CONTRACTOR SHALL BE RESPONSIBLE FOR ANY DAMAGE CAUSED BY THE FAILURE TO DO SO.

SURVEY DISCLAIMER:
TOPOGRAPHIC SURVEY AND CONTOUR MAP USED IN PREPARING PLANS WAS PROVIDED BY SAVOY COMPANY, P.A., 535 S. EMPORIA SUITE 104, WICHITA, KS. ENGINEER DOES NOT GUARANTEE SURVEY ELEVATIONS FOR ACCURACY. CONTRACTOR SHALL VERIFY ELEVATIONS AND NOTIFY ENGINEER OF ANY DISCREPANCIES.

BENCHMARK: City of Wichita Std. Disc Governor & 32nd Street N.
6 ± N. of N. Curb
Elevation = 1377.30 N.G.V.D., 189.9 City Datum

Subdivision Bench Mark

No.	Street and Station	From CL	Description	Elevation
1	Governor Cir., Sta. 3+50.00	14.5' E	Top of E. Curb in front of FH	

WICHITA, SEDGWICK COUNTY, KANSAS
GOVERNEUR CIRCLE
KILLARNEY PLAZA EAST ADDITION
PROJ. NO.: 20041204

CERTIFIED ENGINEERING DESIGN, P.A.

810 WEST DOUGLAS, SUITE C
WICHITA, KANSAS 67203
PH.(316)262-8808 FAX.(316)262-1669

DESIGNED: HDF
DRAWN: AEE
CHECKED: HDF

SCALE: 1"=20'
DATE: 06-05
SHEET: 5
TOTAL: 16