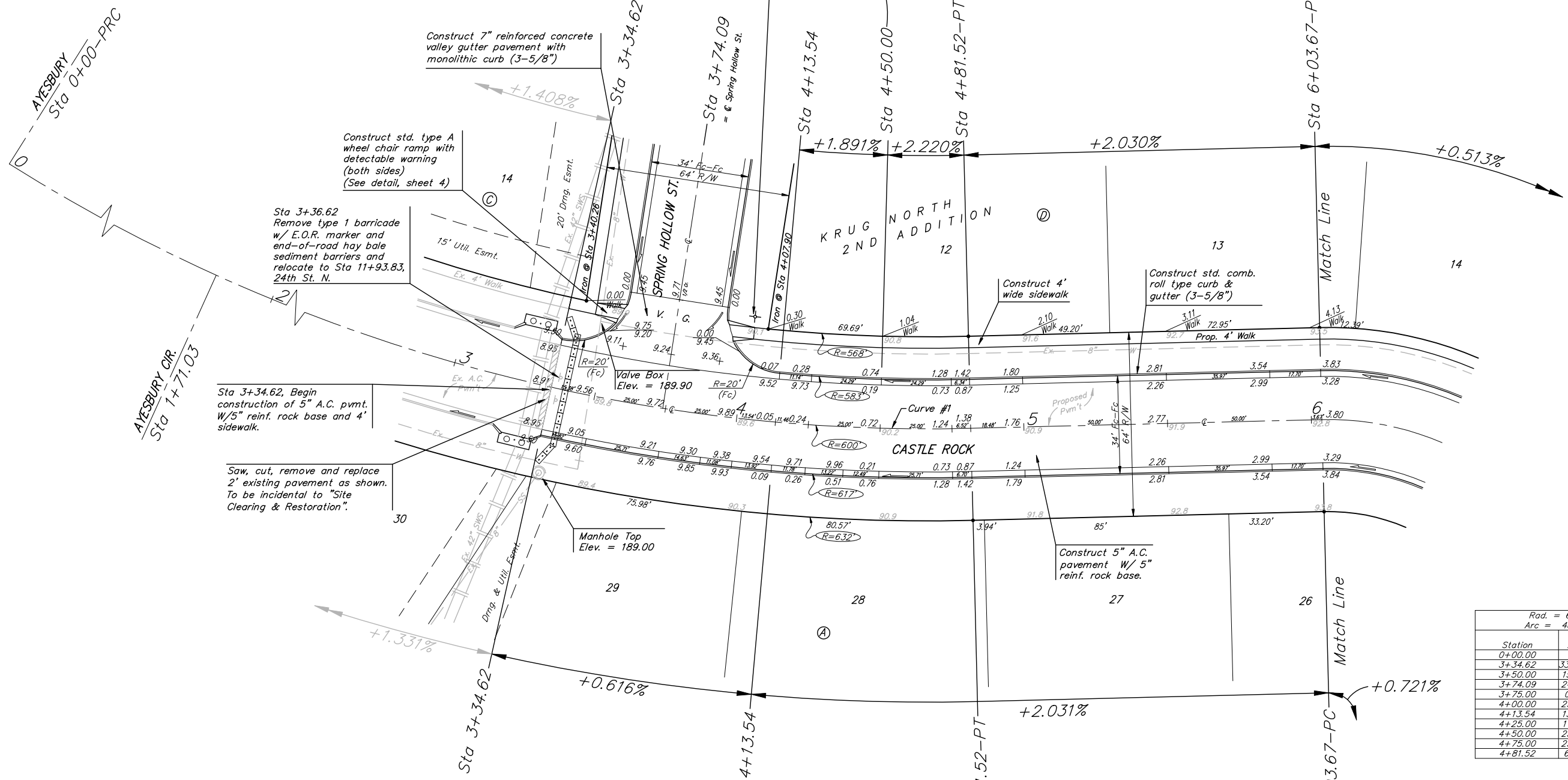
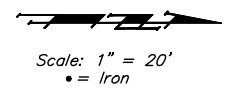


BENCHMARK:
 BM #1: "□" Cut in middle of N headwall of RCBC on 21st St. North. 1004.3' W & 22.1' N of SE Cor., SE1/4, Sec. 2, T-27-S, R-2-E.
 Elev. = 173.23 City Datum

BM #2: "□" Cut at the SE corner of the intersection of Castle Rock & Castle Rock Ct., Krug North Addition.
 Elev. = 183.50 City Datum



Curve #1
 Curve Data Based on Centerline
 Rad. = 600' Delta = 45° 58' 53" Tangent = 254.57'
 Arc = 481.52' L.C. = 468.70' Def/Ft. = 2.86477 Min.

Station	Arc	FACE CHORD LENGTHS		Defl.	T. Defl.
		8' Lt.	8' Rt.		
0+00.00	-	-	-	0'00"00"	0'00"00"
3+34.62	334.62'	316.54'	344.06'	15°58'36"	15°58'36"
3+50.00	15.38'	14.74'	16.02'	0°44'03"	16°42'40"
3+74.09	24.09'	23.08'	25.09'	1°09'01"	17°51'41"
3+75.00	0.91'	0.87'	0.95'	0°02'36"	17°54'17"
4+00.00	25.00'	23.96'	26.04'	1°11'37"	19°05'54"
4+13.54	13.54'	12.98'	14.10'	0°38'47"	19°44'41"
4+25.00	11.46'	10.98'	11.94'	0°32'50"	20°17'31"
4+50.00	25.00'	23.96'	26.04'	1°11'37"	21°29'08"
4+75.00	25.00'	23.96'	26.04'	1°11'37"	22°40'46"
4+81.52	6.52'	6.25'	6.79'	0°18'40"	22°59'26"

Construct 7" reinforced concrete valley gutter pavement with monolithic curb (3-5/8")
 Sta 3+34.62
 Sta 3+74.09 = Spring Hollow St.
 Construct std. type A wheel chair ramp with detectable warning (both sides) (See detail, sheet 4)
 Sta 3+36.62 Remove type 1 barricade w/ E.O.R. marker and end-of-road hay bale sediment barriers and relocate to Sta 11+93.83, 24th St. N.
 15' Util. Esmt.
 Ex. 4' Walk
 20' Dmg. Esmt.
 Ex. 4' Walk
 Iron @ Sta 3+40.28
 Iron @ Sta 4+07.90
 34' R/W - FC
 64' R/W

Sta 3+34.62, Begin construction of 5" A.C. pvmt. W/5" reinf. rock base and 4' sidewalk.
 Saw, cut, remove and replace 2" existing pavement as shown. To be incidental to "Site Clearing & Restoration".
 30
 29
 28
 27
 26
 Manhole Top Elev. = 189.00
 80.57' R=632
 85'
 33.20'
 3.94'
 91.8'
 92.8'
 93.8'

Sta 4+03.00, 36' Lt. Install std. D3 (SNS) ass'y as per City specs. "Castle Rock" & "Spring Hollow St."

P.V.I. Elev. = 190.74 No V.C.
 P.V.I. Elev. = 191.42 No V.C.
 Sta 4+50.00
 Sta 4+81.52-PT

P.V.I. Elev. = 193.90 35.40' V.C.
 Sta 6+03.67-PC

P.V.I. Elev. = 189.50 No V.C.
 Sta 3+34.62

P.V.I. Elev. = 190.00 50' V.C.
 Sta 4+13.54

P.V.I. Elev. = 193.90 35.40' V.C.
 Sta 6+03.67-PC

NOTE: ROLL TYPE CURB & GUTTER TO BE CONSTRUCTED ON THE PAVEMENT SHOWN ON THIS SHEET. TOP OF CURB ELEVATIONS ARE GIVEN FOR FULL HEIGHT CURB.

Baughman KRUG NORTH 2ND ADD. - PH. III
CASTLE ROCK
 STA 3+34.62 TO STA 6+03.67

Baughman Company, P.A. 315 Elm St. W. Palm Beach, FL 33480
 PROJECT NUMBER 472-84249 DESIGN ATD DRAWN TMS
 APPROVED DATE 01/06
 SCALE Noted SHEET 6 OF 39

KrugNorth2nd/PhaseIII/Sec1 05-09-E368