

BENCHMARK:
 BM #1: "□" Cut in middle of N headwall of RCBC on 21st St. North. 1004.3' W & 22.1' N of SE Cor., SE1/4, Sec. 2, T-27-S, R-2-E.
 Elev. = 173.23 City Datum

BM #2: "□" Cut at the SE corner of the intersection of Castle Rock & Castle Rock Ct., Krug North Addition.
 Elev. = 183.50 City Datum

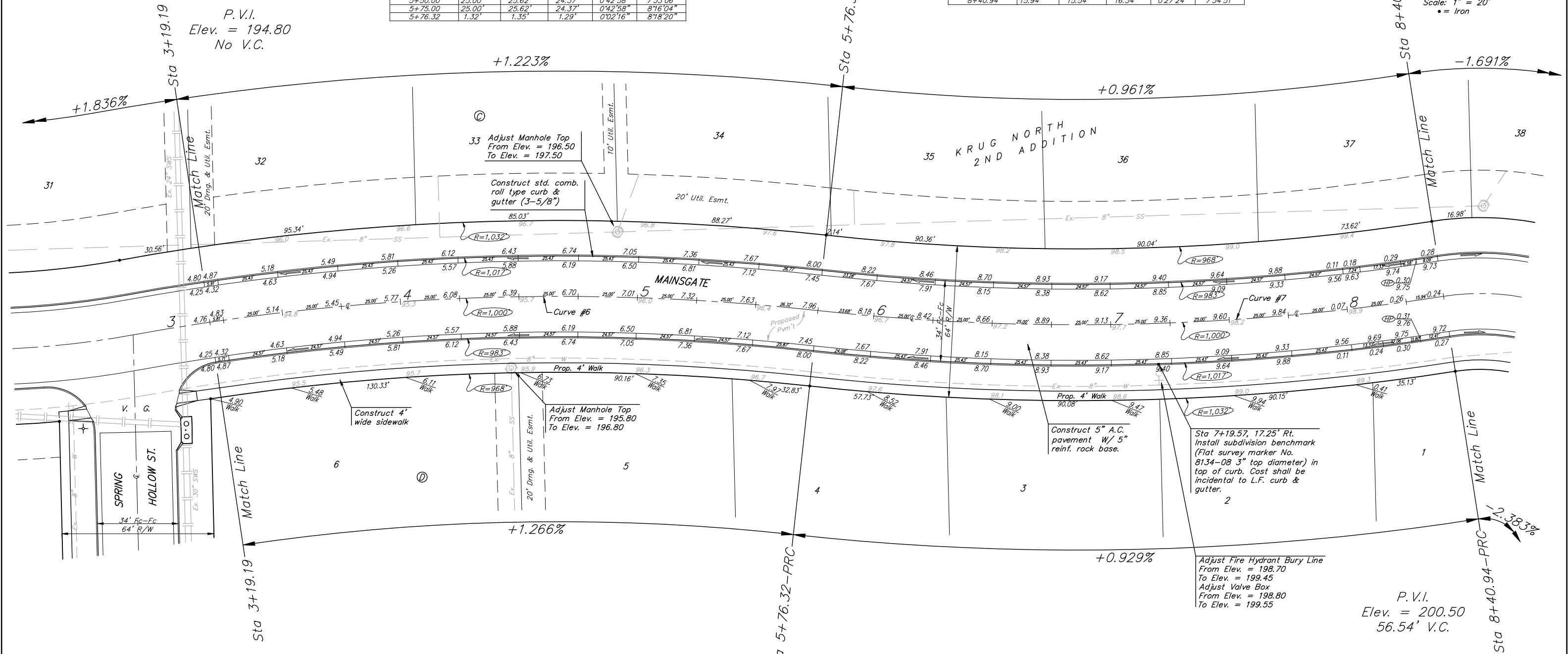
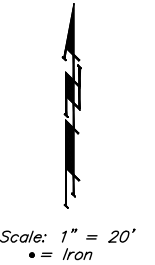
Curve #6
 Curve Data Based on Centerline
 Rad. = 1000' Delta = 16° 36' 41" Tangent = 145.99'
 Arc = 289.92' L.C. = 288.91' Def/Ft. = 1.71889 Min.

Station	Arc	FACE CHORD LENGTHS		Defl.	T. Defl.
		8' Lt.	8' Rt.		
2+86.40	-	-	-	0'00"00"	0'00"00"
3+19.19	32.79'	33.61'	31.97'	0'56"22"	0'56"22"
3+25.00	5.81'	5.96'	5.66'	0'09"59"	1'06"21"
3+50.00	25.00'	25.62'	24.37'	0'42"58"	1'49"19"
3+75.00	25.00'	25.62'	24.37'	0'42"58"	2'32"17"
4+00.00	25.00'	25.62'	24.37'	0'42"58"	3'15"16"
4+25.00	25.00'	25.62'	24.37'	0'42"58"	3'58"14"
4+50.00	25.00'	25.62'	24.37'	0'42"58"	4'41"12"
4+75.00	25.00'	25.62'	24.37'	0'42"58"	5'24"11"
5+00.00	25.00'	25.62'	24.37'	0'42"58"	6'07"09"
5+25.00	25.00'	25.62'	24.37'	0'42"58"	6'50"07"
5+50.00	25.00'	25.62'	24.37'	0'42"58"	7'33"06"
5+75.00	25.00'	25.62'	24.37'	0'42"58"	8'16"04"
5+76.32	1.32'	1.35'	1.29'	0'02"16"	8'18"20"

Curve #7
 Curve Data Based on Centerline
 Rad. = 1000' Delta = 15'09"42" Tangent = 133.09'
 Arc = 264.62' L.C. = 263.85' Def/Ft. = 1.71888 Min.

Station	Arc	FACE CHORD LENGTHS		Defl.	T. Defl.
		8' Lt.	8' Rt.		
5+76.32	-	-	-	0'00"00"	0'00"00"
6+00.00	23.68'	23.09'	24.27'	0'40"42"	0'40"42"
6+25.00	25.00'	24.37'	25.62'	0'42"58"	1'23"40"
6+50.00	25.00'	24.37'	25.62'	0'42"58"	2'06"39"
6+75.00	25.00'	24.37'	25.62'	0'42"58"	2'49"37"
7+00.00	25.00'	24.37'	25.62'	0'42"58"	3'32"35"
7+25.00	25.00'	24.37'	25.62'	0'42"58"	4'15"34"
7+50.00	25.00'	24.37'	25.62'	0'42"58"	4'58"32"
7+75.00	25.00'	24.37'	25.62'	0'42"58"	5'41"30"
8+00.00	25.00'	24.37'	25.62'	0'42"58"	6'24"29"
8+25.00	25.00'	24.37'	25.62'	0'42"58"	7'07"27"
8+40.94	15.94'	15.54'	16.34'	0'27"24"	7'34"51"

P.V.I.
 Elev. = 200.50
 66' V.C.



P.V.I.
 Elev. = 198.00
 No V.C.

P.V.I.
 Elev. = 200.50
 56.54' V.C.

NOTE: ROLL TYPE CURB & GUTTER TO BE CONSTRUCTED ON THE PAVEMENT SHOWN ON THIS SHEET. TOP OF CURB ELEVATIONS ARE GIVEN FOR FULL HEIGHT CURB.

	KRUG NORTH 2ND ADD. - PH. III MAINSGATE STA 3+19.19 TO STA 8+40.94	
	<small>Baughman Company, P.A. 315 Elm St. Wichita, KS 67211 P 316-262-7771 F 316-262-0149 ENGINEERING SURVEYING PLANNING LANDSCAPE ARCHITECTURE</small>	
PROJECT NUMBER 472-84249	DESIGN ATD	DRAWN TMS
REVISIONS:	APPROVED	DATE 01/06
	SCALE Noted	SHEET 10 OF 39
<small>KrugNorth2nd/PhaseIII/Sec</small>		<small>05-09-E368</small>