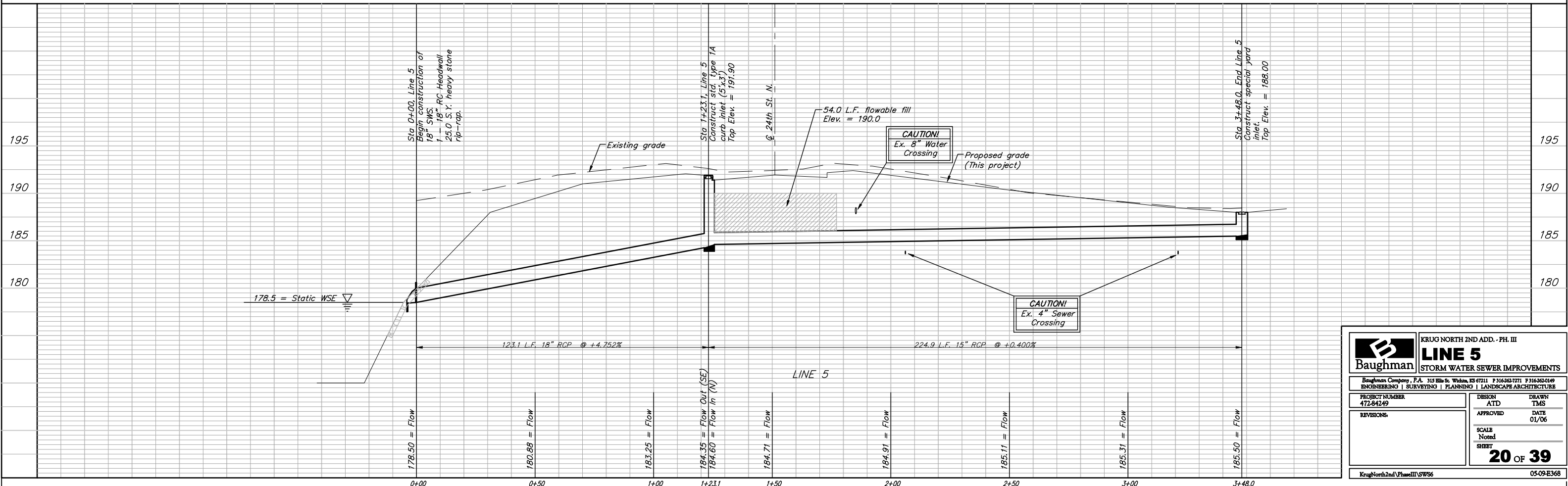
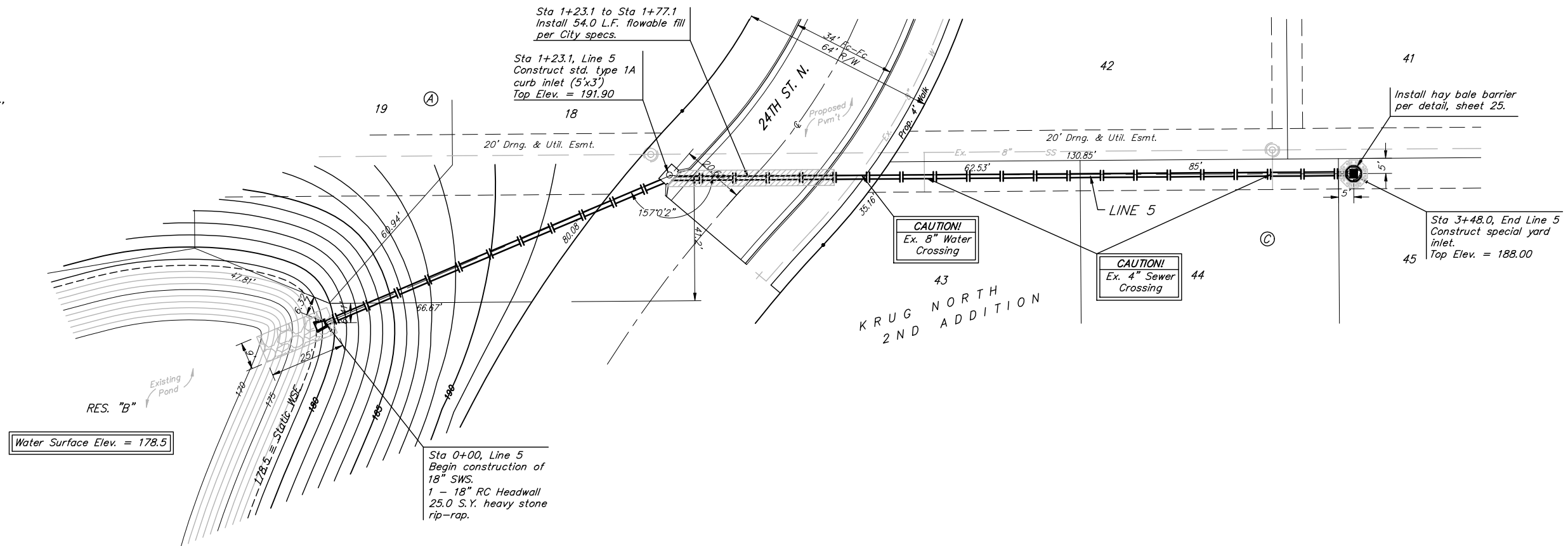


BENCHMARK:
 BM #1: "□" Cut in middle of N headwall of RCBC on 21st St. North. 1004.3' W & 22.1' N of SE Cor., SE 1/4, Sec. 2, T-27-S, R-2-E. Elev. = 173.23 City Datum

BM #2: "□" Cut at the SE corner of the intersection of Castle Rock & Castle Rock Ct., Krug North Addition. Elev. = 183.50 City Datum

Scale: 1" = 20' Horizontal
 1" = 5' Vertical
 • = Iron



	KRUG NORTH 2ND ADD. - PH. III LINE 5 STORM WATER SEWER IMPROVEMENTS	
	<small>Baughman Company, P.A. 315 Ellis St. Wichita, KS 67211 P 316-262-7771 F 316-262-0149 ENGINEERING SURVEYING PLANNING LANDSCAPE ARCHITECTURE</small>	
PROJECT NUMBER 472-84249	DESIGN ATD	DRAWN TMS
REVISIONS:	APPROVED	DATE 01/06
	SCALE Noted	SHEET 20 OF 39
<small>KrugNorth2ndVPhaseIII/SWS6</small>		<small>05-09-E368</small>