

BENCHMARKS:
 BM #1: "X" on the West End of the Steel Casing Pipe at the Railroad Crossing South of 37th Street North Sta. 25+90, 41' Rt. Elev. = 1336.58 MSL

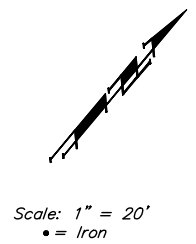
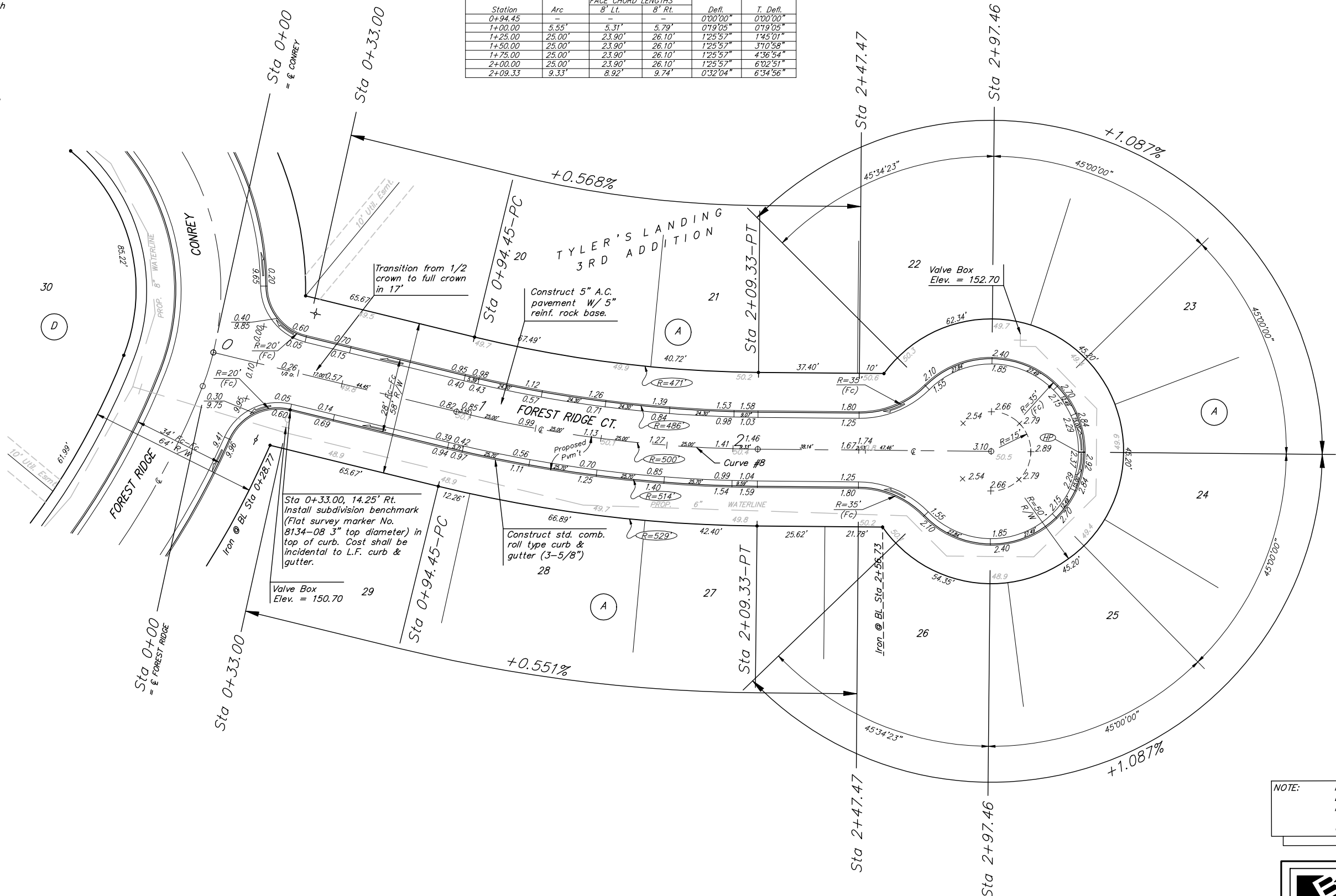
BM #2: Steel T-Post Driven 4' Deep Sta. 18+00, 25' Rt. Elev. = 1337.73 MSL

BM #3: "□" in the Concrete Footing of the SBC Pedestal in the South West Corner of 37th Street North and Tyler Road Sta. 8+56, 95' Rt. Elev. = 1342.17 MSL

BM #4: Railroad Spike in the East Face of the 2nd Power Pole North of 37th Street and West of Tyler Road Sta. 94+24, 48' Lt. Elev. = 1342.85 MSL

Curve #8
 Curve Data Based on Centerline
 Rad. = 500' Delta = 139°51' Tangent = 57.69'
 Arc = 114.88' L.C. = 114.63' Del/Pt. = 3.43772 Min.

Station	FACE CHORD LENGTHS		Defl.	T. Defl.
	8' Lt.	8' Rt.		
0+94.45	-	-	0°00'00"	0°00'00"
1+00.00	5.55'	5.31'	5.79'	0°19'05"
1+25.00	23.90'	26.10'	1°25'57"	1°45'01"
1+50.00	25.00'	23.90'	26.10'	1°25'57"
1+75.00	25.00'	23.90'	26.10'	1°25'57"
2+00.00	25.00'	23.90'	26.10'	1°25'57"
2+09.33	9.33'	8.92'	9.74'	0°32'04"



Scale: 1" = 20'
 • = Iron

P.V.I.
 Elev. = 153.00
 30' V.C.

Adjust water valve boxes as needed to grade. Incidental to 'Site Clearing and Restoration'.

Contractor to remove existing trees, fence, etc. as needed to complete paving project. Removal shall be incidental to bid item 'Site Clearing and Restoration'.

NOTE: ROLL TYPE CURB & GUTTER TO BE CONSTRUCTED ON THE PAVEMENT SHOWN ON THIS SHEET. TOP OF CURB ELEVATIONS ARE GIVEN FOR FULL HEIGHT CURB.

Baughman Tyler's Landing 3rd Addition - Phase I
Forest Ridge Ct.
 STA 0+00 TO STA 2+97.46

Baughman Company, P.A. 315 Elm St. White, NJ 07111 P 314262-7271 F 314262-0149
 ENGINEERING | SURVEYING | PLANNING | LANDSCAPE ARCHITECTURE

PROJECT NUMBER 472-84262	DESIGN AEG	DRAWN JWH/TMS
REVISIONS:	APPROVED	DATE 08/05
	SCALE Noted	
	SHEET	12 OF 52

tylers landing 3rd part.dwg 05-07-E283