

BENCHMARKS:

BM #1: "X" on the West End of the Steel Casing Pipe at the Railroad Crossing South of 37th Street North Sta. 25+90, 41' Rt. Elev. = 1336.58 MSL

BM #2: Steel T-Post Driven 4' Deep Sta. 18+00, 25' Rt. Elev. = 1337.73 MSL

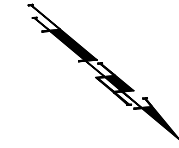
BM #3: "□" in the Concrete Footing of the SBC Pedestal in the South West Corner of 37th Street North and Tyler Road Sta. 8+56, 95' Rt. Elev. = 1342.17 MSL

BM #4: Railroad Spike in the East Face of the 2nd Power Pole North of 37th Street and West of Tyler Road Sta. 94+24, 48' Lt. Elev. = 1342.85 MSL

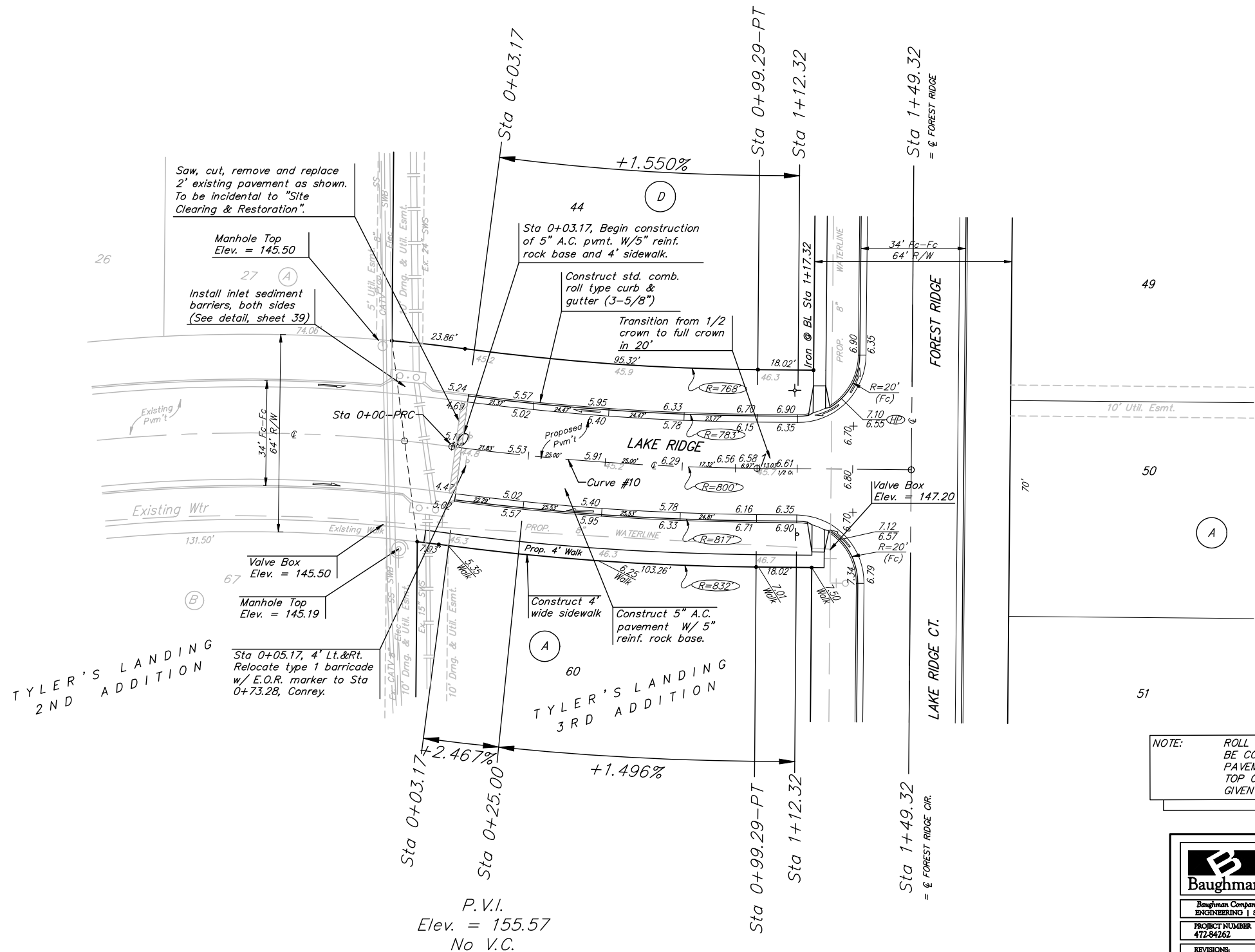
Curve #10
Curve Data Based on Centerline

Station	Arc	FACE CHORD LENGTHS		Defl.	T. Defl.
		8' Lt.	8' Rt.		
0+00.00	-	-	-	0'00'00"	0'00'00"
0+03.17	3.17'	3.07'	3.27'	0'06'48"	0'06'48"
0+25.00	21.83'	21.15'	22.51'	0'46'54"	0'53'43"
0+50.00	25.00'	24.22'	25.78'	0'53'43"	1'47'26"
0+75.00	25.00'	24.22'	25.78'	0'53'43"	2'41'08"
0+99.29	24.29'	23.53'	25.05'	0'52'11"	3'53'20"

Rad. = 800' Delta = 7'06" 40" Tangent = 49.71'
Arc = 99.29' L.C. = 99.23' Del/Ft. = 2.14859 Min.



Scale: 1" = 20'
• = Iron



Saw, cut, remove and replace 2" existing pavement as shown. To be incidental to "Site Clearing & Restoration".

Manhole Top Elev. = 145.50

Install inlet sediment barriers, both sides (See detail, sheet 39)

Sta 0+03.17, Begin construction of 5" A.C. pmvt. W/5" reinf. rock base and 4' sidewalk.

Construct std. comb. roll type curb & gutter (3-5/8")

Transition from 1/2 crown to full crown in 20'

Proposed Pvm't

Prop. 4' Walk

Construct 4' wide sidewalk

Construct 5" A.C. pavement W/ 5" reinf. rock base.

Valve Box Elev. = 145.50

Manhole Top Elev. = 145.19

Sta 0+05.17, 4' Lt. & Rt. Relocate type 1 barricade w/ E.O.R. marker to Sta 0+73.28, Conrey.

Valve Box Elev. = 147.20

NOTE: ROLL TYPE CURB & GUTTER TO BE CONSTRUCTED ON THE PAVEMENT SHOWN ON THIS SHEET. TOP OF CURB ELEVATIONS ARE GIVEN FOR FULL HEIGHT CURB.

Adjust water valve boxes as needed to grade. Incidental to 'Site Clearing and Restoration'.

Contractor to remove existing trees, fence, etc. as needed to complete paving project. Removal shall be incidental to bid item 'Site Clearing and Restoration'.

P.V.I.
Elev. = 155.57
No V.C.

Baughman		Tyler's Landing 3rd Addition - Phase I Lake Ridge STA 0+03.17 TO STA 1+49.32	
Baughman Company, P.A. 315 Elm St. Wichita, KS 67211 F 316-262-1771 F 316-262-0149 ENGINEERING SURVEYING PLANNING LANDSCAPE ARCHITECTURE			
PROJECT NUMBER 472-84262	DISION ABO	DRAWN JWH/TMS	
REVISIONS:	APPROVED	DATE 08/05	
	SCALE Noted		
	15 OF 52		
tylers landing 3rd/rev1.dwg		05-07-E283	