

BENCHMARKS:
 BM #1: "X" on the West End of the Steel Casing Pipe at the Railroad Crossing South of 37th Street North Sta. 25+90, 41' Rt. Elev. = 1336.58 MSL

BM #2: Steel T-Post Driven 4' Deep Sta. 18+00, 25' Rt. Elev. = 1337.73 MSL

BM #3: "□" in the Concrete Footing of the 2nd Power Pole North of 37th Street and Tyler Road Sta. 8+56, 95' Lt. Elev. = 1342.17 MSL

BM #4: Railroad Spike in the East Face of the 2nd Power Pole North of 37th Street and West of Tyler Road Sta. 94+24, 48' Lt. Elev. = 1342.85 MSL

Pond data:
 Static ws elev. = 137.2
 100-yr ws elev. is Variable along reach

Scale: 1" = 20' Horizontal
 1" = 5' Vertical
 • = Iron

TYLER'S LANDING
 2ND ADDITION

Res. "A"

Sta 0+15.0, Begin Line 1
 Begin construction of 36" RCP,
 1 - 36" RC Headwall
 27.0 S.Y. light stone rip-rap.

CAUTION! Ex. Irrigation Line Crossing.
 Depth unknown. Contractor shall remove/replace/repair/adjust irrigation line and sprinkler heads as necessary for construction. Cost to be included in "Site Clearing & Restoration."

CAUTION!
 8" Encased SS Crossing

CAUTION!
 8" Wtr Crossing

Sta 1+81.6 to Sta 2+23.0
 Install 41.4 L.F. flowable fill per City specs.

Sta 1+81.6, Line 1
 Construct std. type 1A inlet (10'x3').
 Top Elev. = 145.98

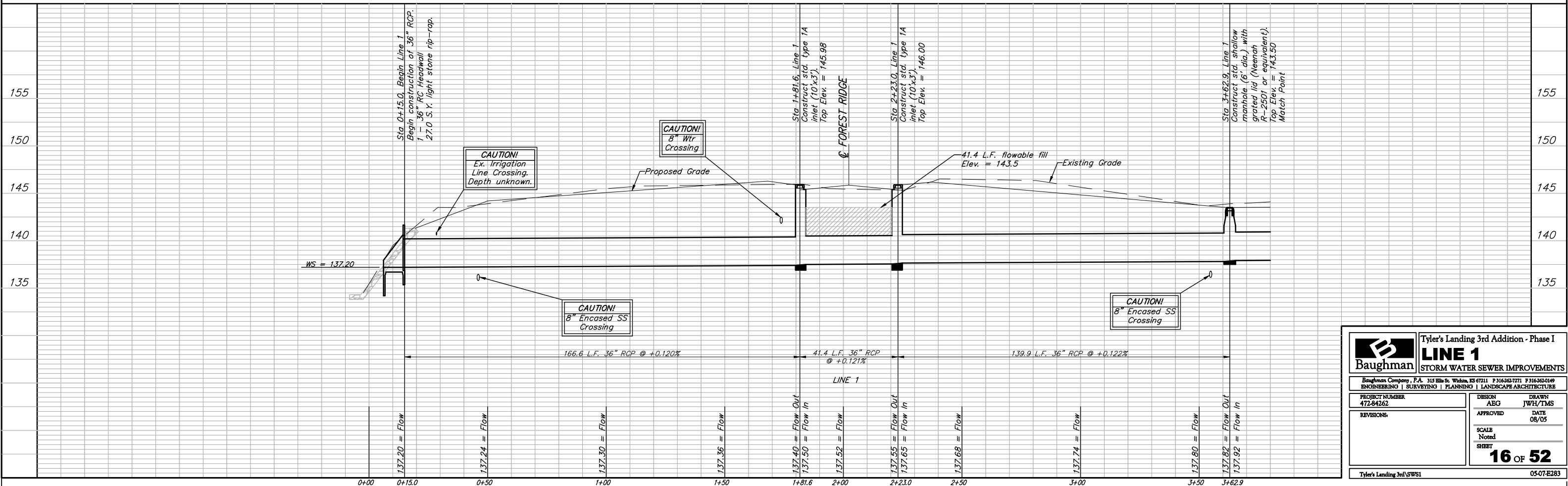
Sta 2+23.0, Line 1
 Construct std. type 1A inlet (10'x3').
 Top Elev. = 146.00

CAUTION!
 8" Encased SS Crossing

Sta 3+62.9, Line 1
 Construct std. shallow manhole (6' dia.) with grated lid (Neenah R-2501 or equivalent).
 Top Elev. = 143.50
 Match Point

Install hay bale sediment barrier per detail, sheet 37.

TYLER'S LANDING
 3RD ADDITION



Baughman		Tyler's Landing 3rd Addition - Phase I	
LINE 1		STORM WATER SEWER IMPROVEMENTS	
Baughman Company, P.A. 315 Ellis St. Wilkes, KS 67111 P 316-362-7771 F 316-362-0149 ENGINEERING SURVEYING PLANNING LANDSCAPE ARCHITECTURE			
PROJECT NUMBER 472-84262	DESIGN AEG	DRAWN JWH/TMS	DATE 08/05
REVISIONS	APPROVED	SCALE Noted	SHEET 16 OF 52
Tyler's Landing 3rd SWS1		05-07-E283	