

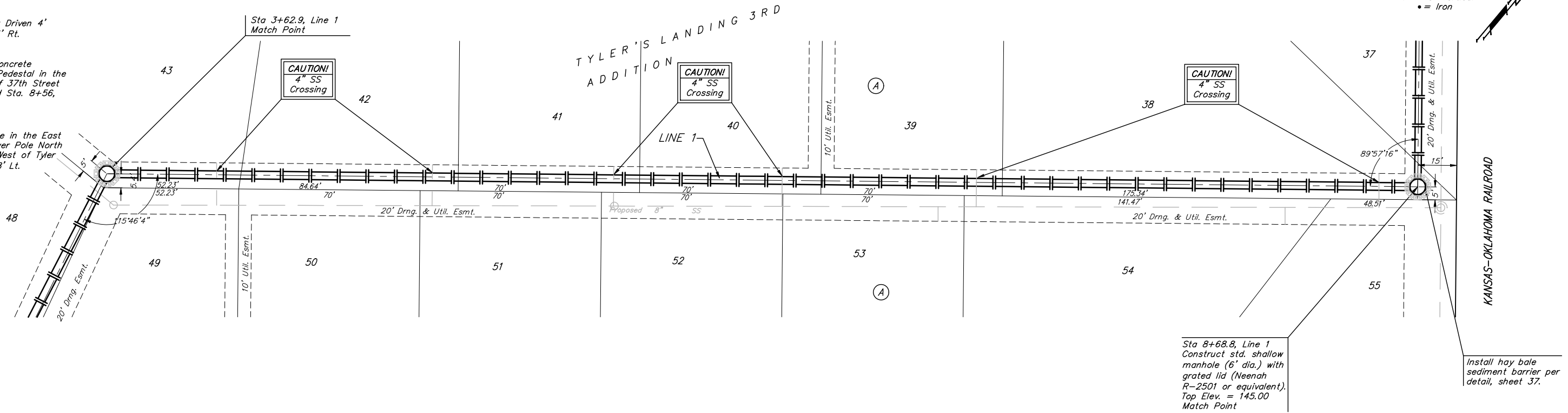
BENCHMARKS:
 BM #1: "X" on the West End of the Steel Casing Pipe at the Railroad Crossing South of 37th Street North Sta. 25+90, 41' Rt. Elev. = 1336.58 MSL

BM #2: Steel T-Post Driven 4' Deep Sta. 18+00, 25' Rt. Elev. = 1337.73 MSL

BM #3: "□" in the Concrete Footing of the SBC Pedestal in the South West Corner of 37th Street North and Tyler Road Sta. 8+56, 95' Rt. Elev. = 1342.17 MSL

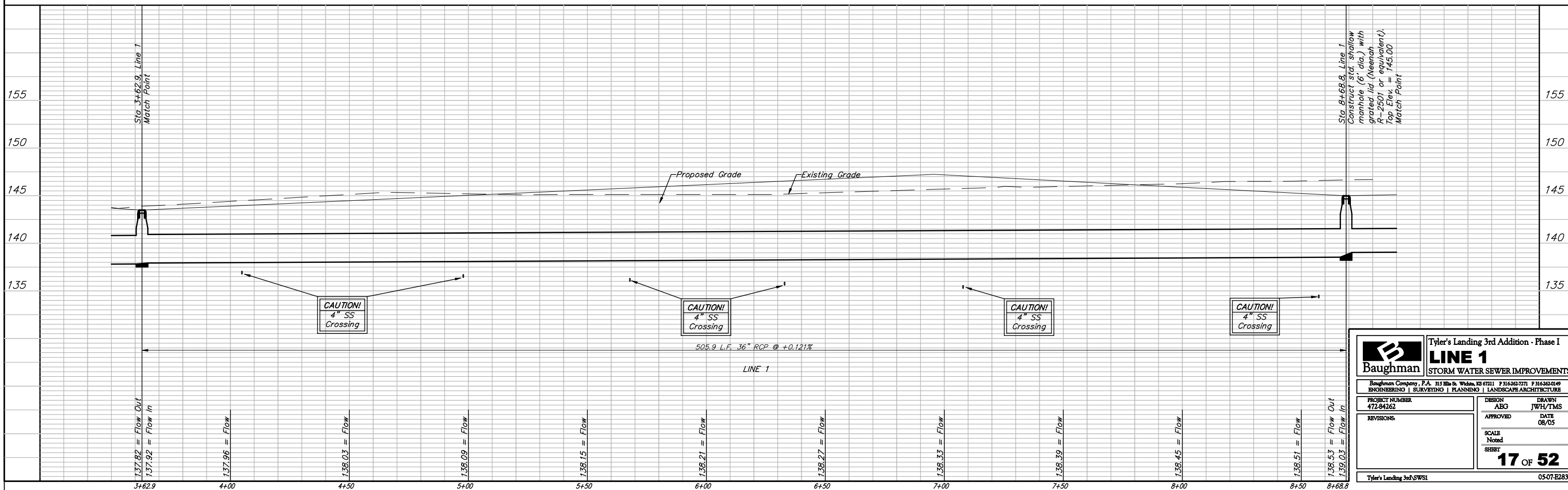
BM #4: Railroad Spike in the East Face of the 2nd Power Pole North of 37th Street and West of Tyler Road Sta. 94+24, 48' Lt. Elev. = 1342.85 MSL

Scale: 1" = 20' Horizontal
 1" = 5' Vertical
 • = Iron



Sta 8+68.8, Line 1
 Construct std. shallow manhole (6' dia.) with grated lid (Neenah R-2501 or equivalent), Top Elev. = 145.00 Match Point

Install hay bale sediment barrier per detail, sheet 37.



		Tyler's Landing 3rd Addition - Phase I LINE 1 STORM WATER SEWER IMPROVEMENTS	
<small>Baughman Company, P.A. 315 Elm St. Wichita, KS 67211 P 316-262-7271 F 316-262-0149 ENGINEERING SURVEYING PLANNING LANDSCAPE ARCHITECTURE</small>			
PROJECT NUMBER 472-84262	DESIGN ABG	DRAWN JWH/TMS	
REVISIONS:	APPROVED 	DATE 08/05	
	SCALE Noted		
			17 OF 52
<small>Tyler's Landing 3rd SWS1</small>		<small>05-07-E283</small>	