

BENCHMARKS:

BM #1: "X" on the West End of the Steel Casing Pipe at the Railroad Crossing South of 37th Street North Sta. 25+90, 41' Rt. Elev. = 1336.58 MSL

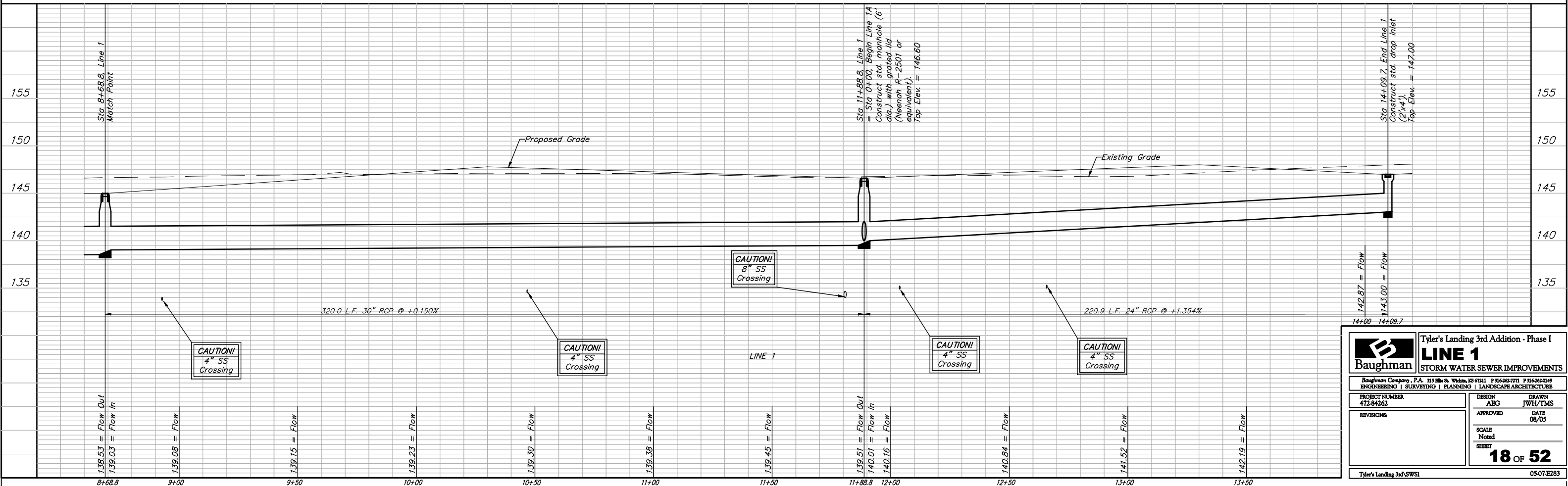
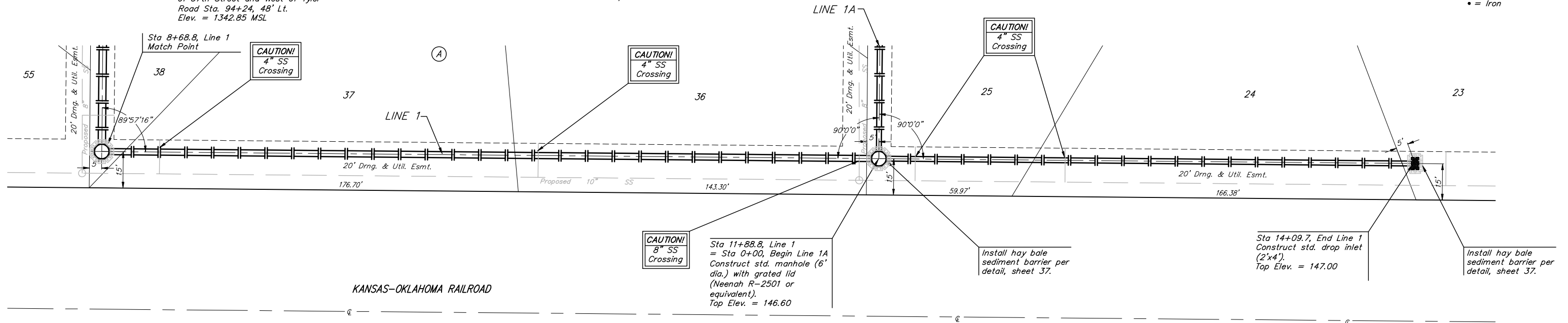
BM #2: Steel T-Post Driven 4' Deep Sta. 18+00, 25' Rt. Elev. = 1337.73 MSL

BM #3: "□" in the Concrete Footing of the SBC Pedestal in the South West Corner of 37th Street North and Tyler Road Sta. 8+56, 95' Rt. Elev. = 1342.17 MSL

BM #4: Railroad Spike in the East Face of the 2nd Power Pole North of 37th Street and West of Tyler Road Sta. 94+24, 48' Lt. Elev. = 1342.85 MSL

TYLER'S LANDING 3RD ADDITION

Scale: 1" = 20' Horizontal
1" = 5' Vertical
• = Iron



<p>Baughman</p>		Tyler's Landing 3rd Addition - Phase I	
		LINE 1	
<p>ENGINEERING SURVEYING PLANNING LANDSCAPE ARCHITECTURE</p>		<p>PROJECT NUMBER 472-84262</p>	
<p>DESIGN ABC</p>		<p>DRAWN JWH/TMS</p>	
<p>APPROVED</p>		<p>DATE 08/05</p>	
<p>SCALE Noted</p>		<p>SHEET 18 OF 52</p>	
<p>REVISIONS</p>		<p>Tyler's Landing 3rd SWSEI</p>	
		<p>05-07-E283</p>	