

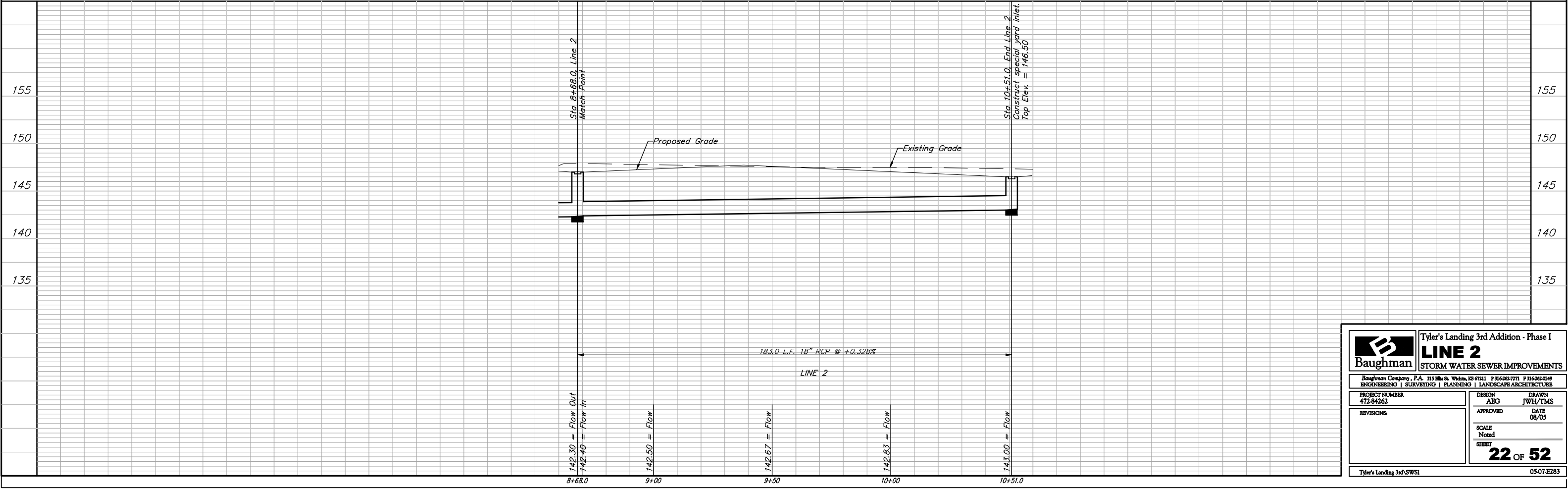
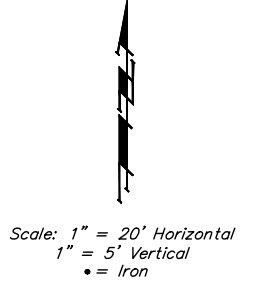
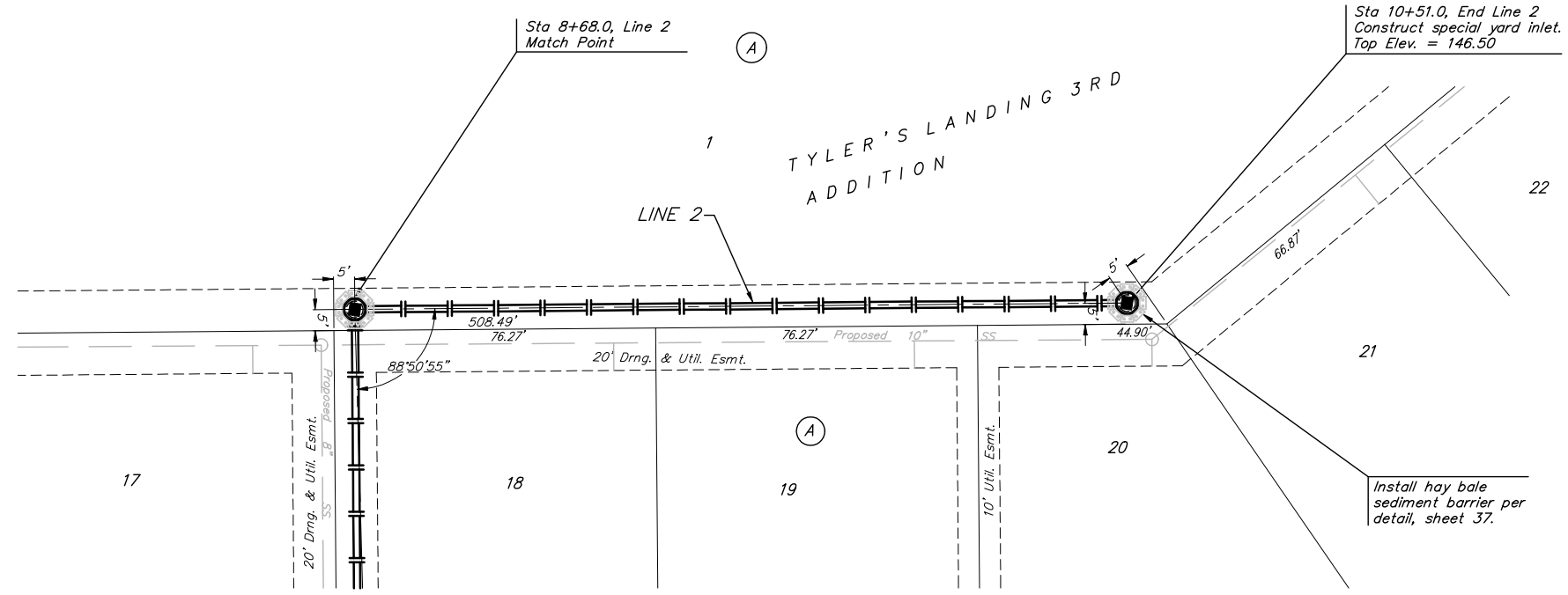
BENCHMARKS:

BM #1: "X" on the West End of the Steel Casing Pipe at the Railroad Crossing South of 37th Street North Sta. 25+90, 41' Rt. Elev. = 1336.58 MSL

BM #2: Steel T-Post Driven 4' Deep Sta. 18+00, 25' Rt. Elev. = 1337.73 MSL

BM #3: "□" in the Concrete Footing of the SBC Pedestal in the South West Corner of 37th Street North and Tyler Road Sta. 8+56, 95' Rt. Elev. = 1342.17 MSL

BM #4: Railroad Spike in the East Face of the 2nd Power Pole North of 37th Street and West of Tyler Road Sta. 94+24, 48' Lt. Elev. = 1342.85 MSL



	Tyler's Landing 3rd Addition - Phase I	
	LINE 2	
STORM WATER SEWER IMPROVEMENTS		
<small>Baughman Company, P.A. 315 Elm St. Wichita, KS 67211 P 316-262-7771 F 316-262-0149 ENGINEERING SURVEYING PLANNING LANDSCAPE ARCHITECTURE</small>		
PROJECT NUMBER 472-84262	DESIGN ABC	DRAWN JWH/TMS
REVISIONS:	APPROVED	DATE 08/05
SCALE Noted		SHEET 22 OF 52
Tyler's Landing 3rd SWS1		05-07-E283