

BENCHMARKS:

BM #1: "X" on the West End of the Steel Casing Pipe at the Railroad Crossing South of 37th Street North Sta. 25+90, 41' Rt. Elev. = 1336.58 MSL

BM #2: Steel T-Post Driven 4' Deep Sta. 18+00, 25' Rt. Elev. = 1337.73 MSL

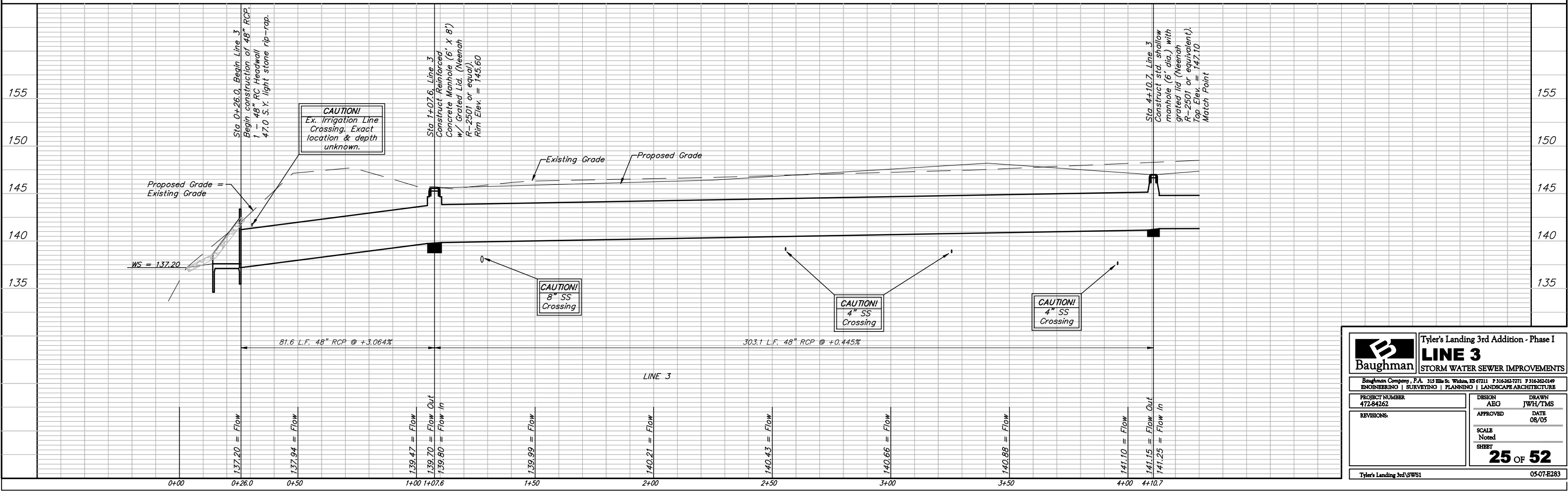
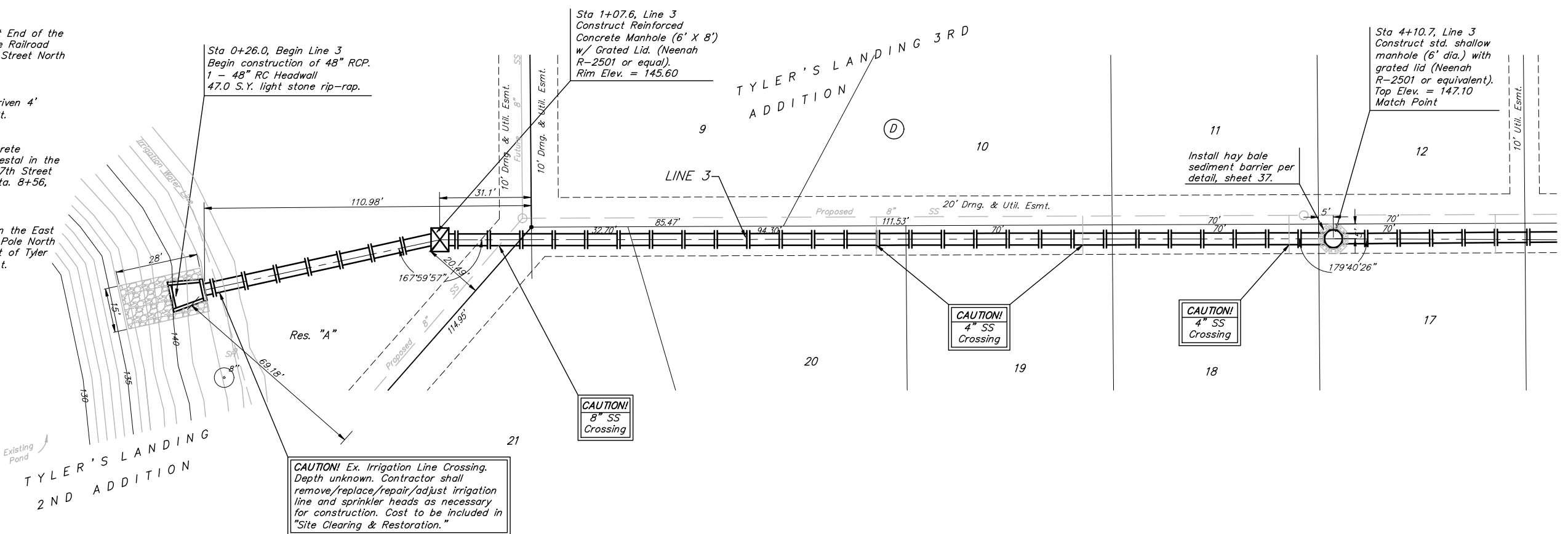
BM #3: "□" in the Concrete Footing of the SBC Pedestal in the South West Corner of 37th Street North and Tyler Road Sta. 8+56, 95' Rt. Elev. = 1342.17 MSL

BM #4: Railroad Spike in the East Face of the 2nd Power Pole North of 37th Street and West of Tyler Road Sta. 94+24, 48' Lt. Elev. = 1342.85 MSL

Pond data:
Static ws elev. = 137.2
100-yr ws elev. is
Variable along reach



Scale: 1" = 20' Horizontal
1" = 5' Vertical
• = Iron



		Tyler's Landing 3rd Addition - Phase I	
		LINE 3	
ENGINEERING SURVEYING PLANNING LANDSCAPE ARCHITECTURE		STORM WATER SEWER IMPROVEMENTS	
<small>Baughman Company, P.A. 315 Ellis St. Wichita, KS 67211 P 316-262-7771 F 316-262-0149 472-84262</small>			
PROJECT NUMBER	DESIGN	DRAWN	
472-84262	AEG	JWH/TMS	
REVISIONS	APPROVED	DATE	
	Noted	08/05	
	SHEET	25 OF 52	
Tyler's Landing 3rd SWS1		05-07-E283	