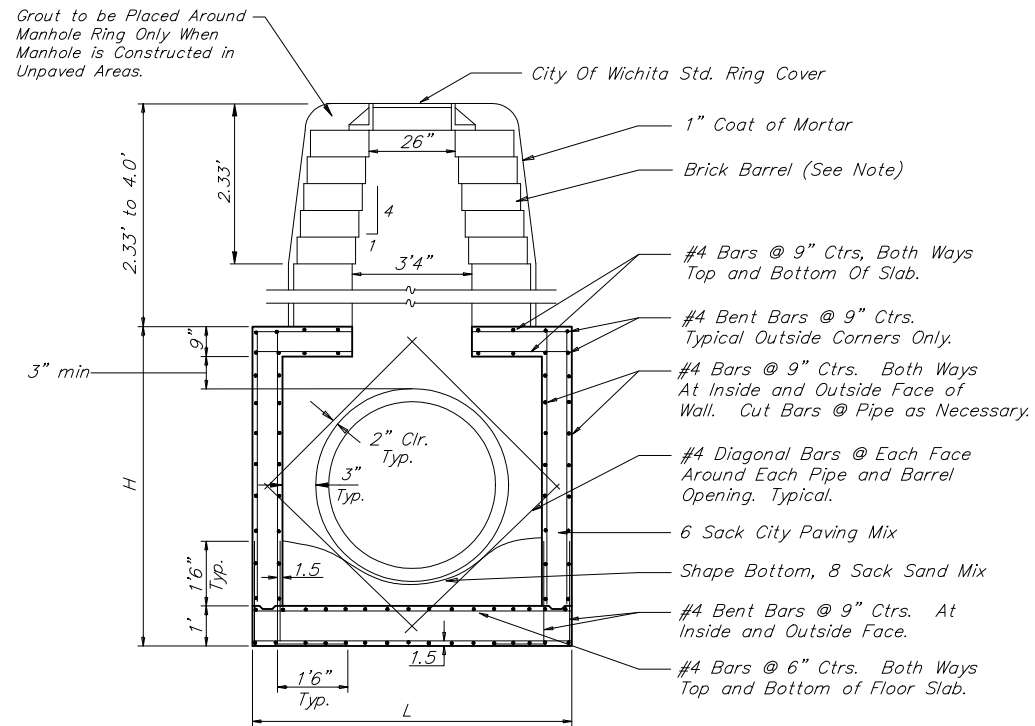
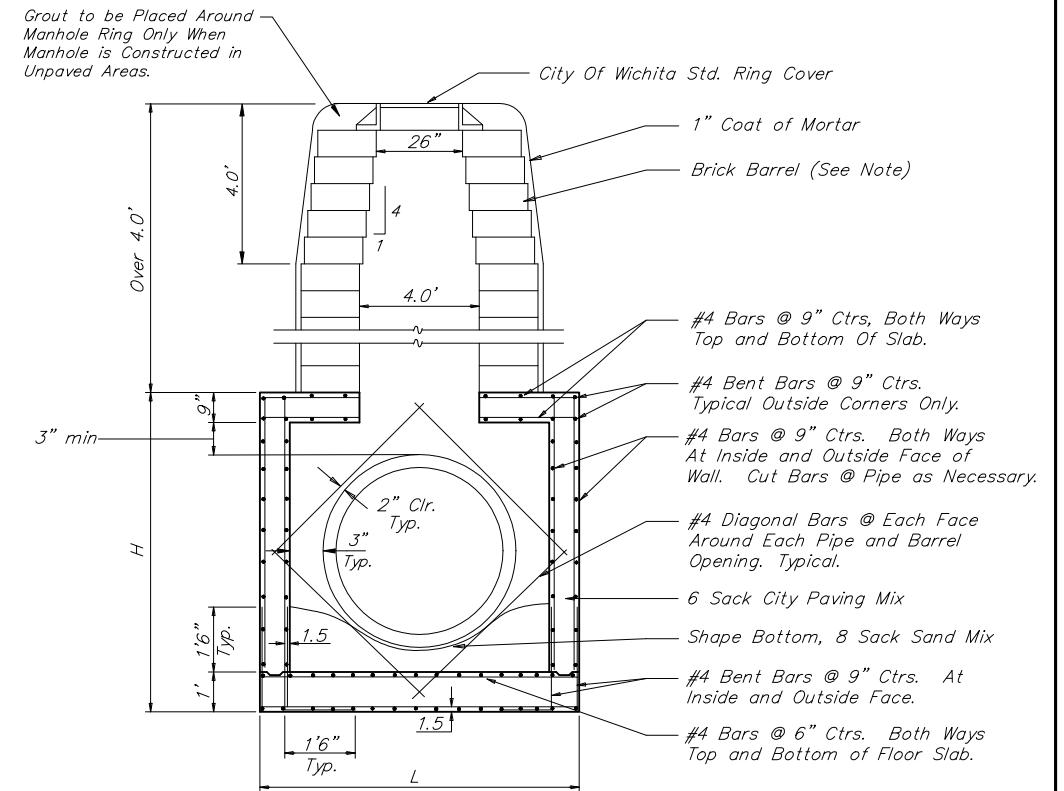


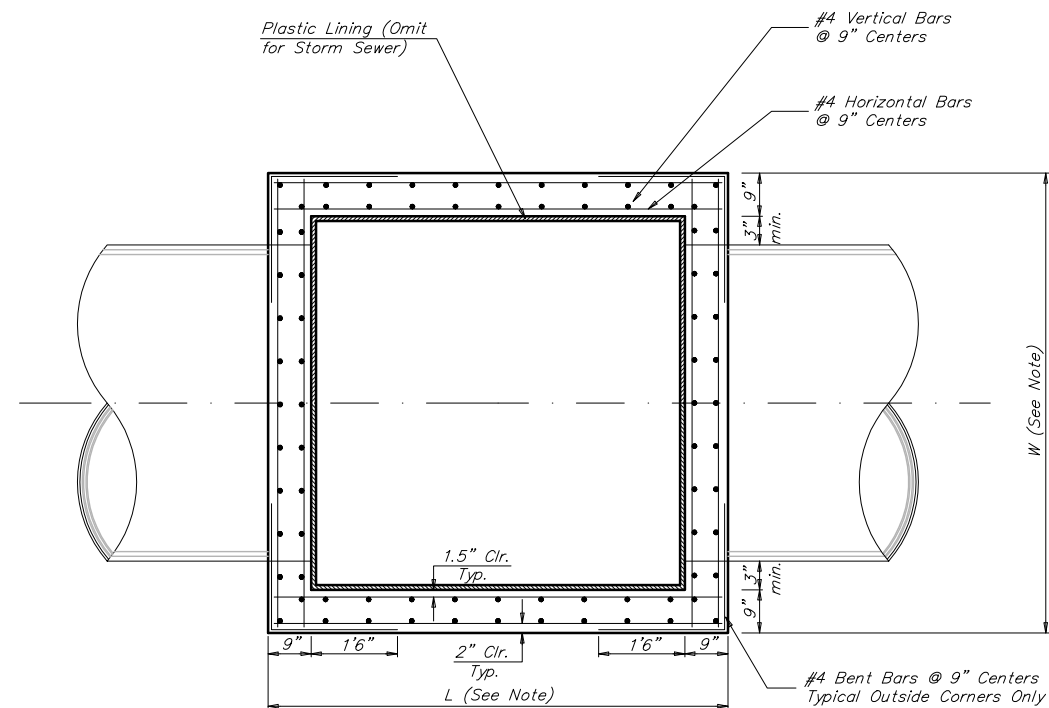
REINFORCED CONCRETE MANHOLE
DEPTH OF STACK: 0' TO 2.33'



REINFORCED CONCRETE MANHOLE
DEPTH OF STACK: 2.33' TO 4.0'



REINFORCED CONCRETE MANHOLE
DEPTH OF STACK: OVER 4.0'



TOP VIEW

Notes:

Brick barrels less than 16' deep shall have 8" walls except when located within public street or alley pavement; then the wall shall be 12". Brick barrels more than 16' deep shall have 12" walls. The "L" and "W" dimensions shall be a minimum of 5'6" for brick barrels with 8" walls and 6'2" for brick barrels with 12" walls when the brick barrels are over 4' in height. Completed manhole shall be without leaks and watertight.

Concrete wall thicknesses shown represents manhole type located within traffic bearing areas. Manhole wall, base, & top dimensions may be reduced when manholes are not subject to vehicle loads. Contractor shall be required to submit shop drawings to the Engineer for approval.

Baughman		CITY OF WICHITA STANDARD REINFORCED CONCRETE MANHOLE DETAIL	
Baughman Company, P.A. 315 8th St. Wichita, KS 67211 F 316-262-7271 F 316-262-0149			
ENGINEERING SURVEYING PLANNING LANDSCAPE ARCHITECTURE			
PROJECT NUMBER 472-84262	DESIGN C.O.W.	DRAWN STAFF	
REVISIONS:	APPROVED	DATE 08/05	
	SCALE NONE	SHEET	
			31 OF 52
RCMH04			