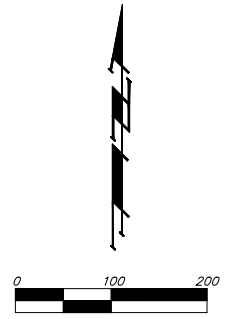
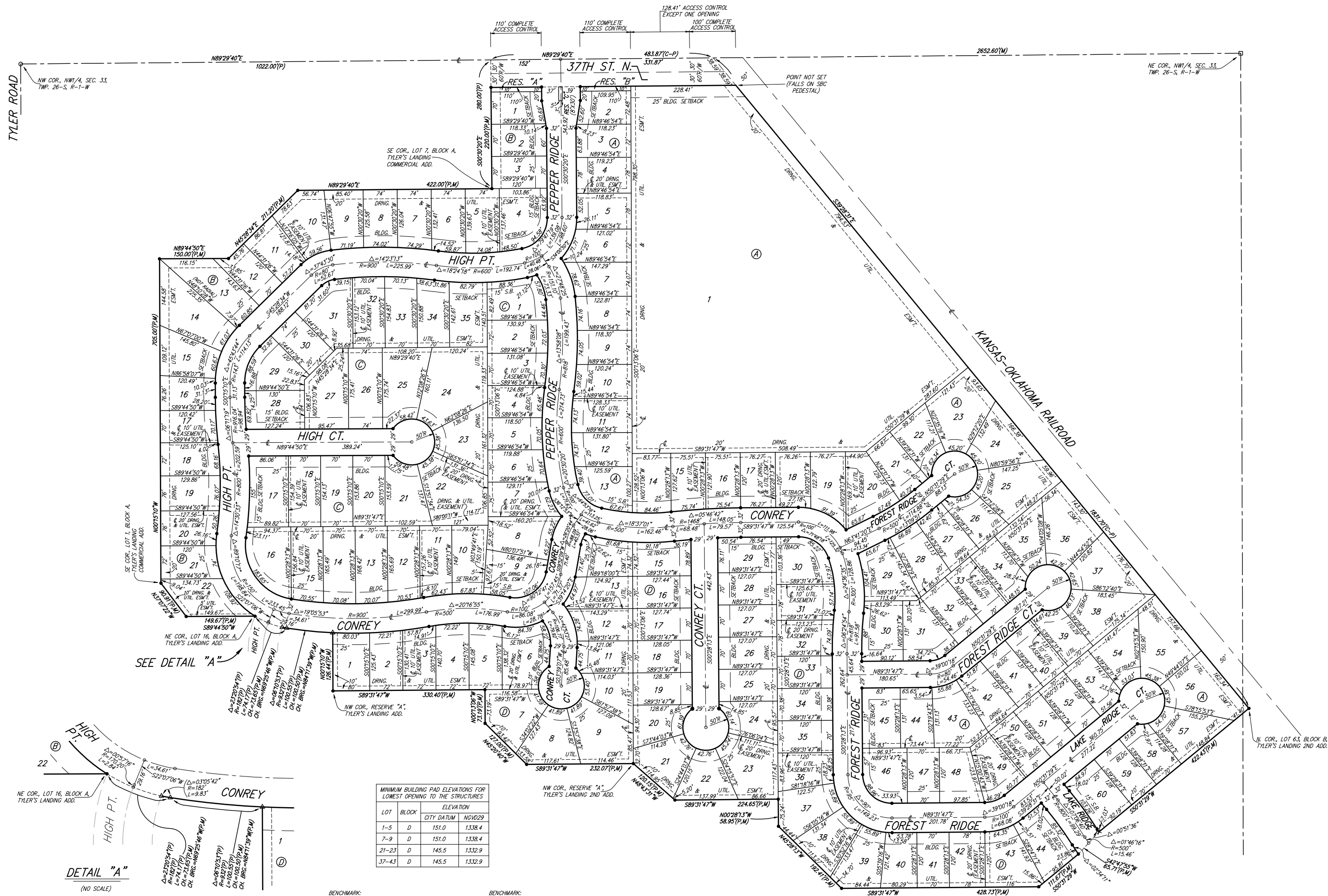
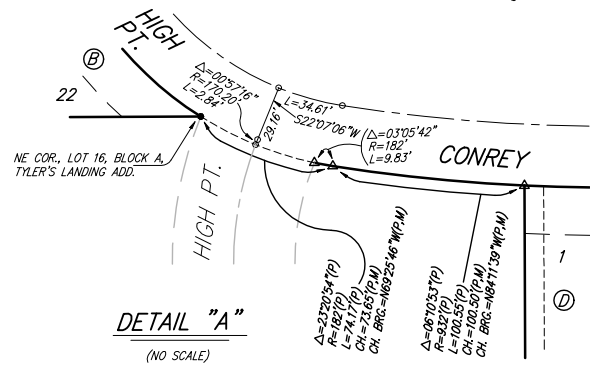


# TYLER'S LANDING 3RD ADDITION WICHITA, SEDGWICK COUNTY, KANSAS



- = #4 REBAR W/ "BAUGHMAN" CAP (SET)
  - ⊕ = CROSS (SET)
  - = 3/4" IRON (FOUND)
  - = #5 REBAR (FOUND)
  - △ = #4 REBAR W/ "LS950" CAP (FOUND)
- (M) = MEASURED  
(P) = PLATTED  
(C-P) = CALCULATED PER PLATTED INFO.

SEE DETAIL "A"



LOT	BLOCK	ELEVATION
1-5	D	151.0
7-9	D	151.0
21-23	D	145.5
37-43	D	145.5

BENCHMARK: 3" BRASS DISC ON TOP OF CURB AT NORTHWEST  
BENCHMARK: 3" BRASS DISC ON TOP OF NORTH CURB ON 34TH