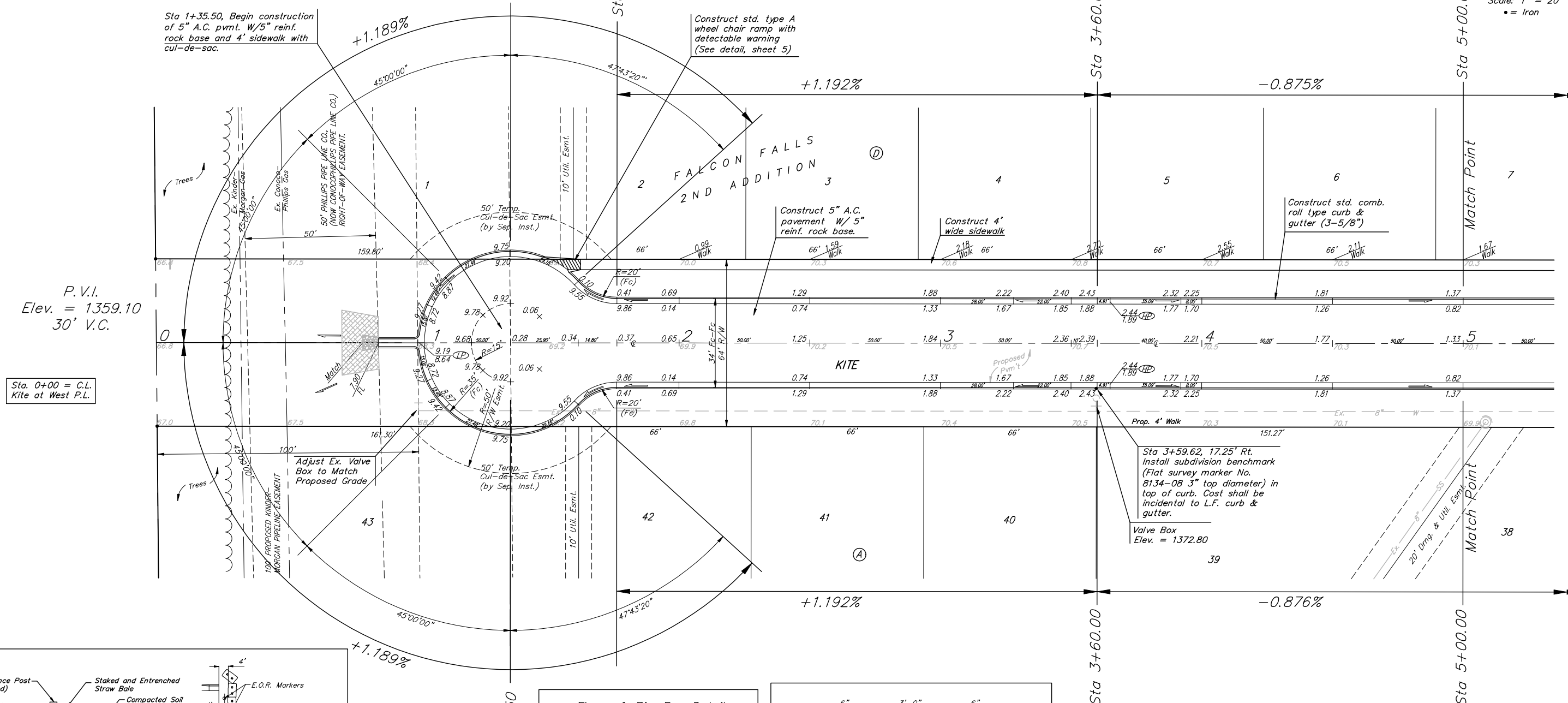


BENCHMARKS:
 BM #1: "□" CL face of catch basin, west side of Lot 4, Block 5, Falcon Falls Addition. Elev. = 1352.47 MSL

BM #2: "□" south end of the south curb return at Kite and Peregrine, Falcon Falls Addition. Elev. = 1359.85 MSL

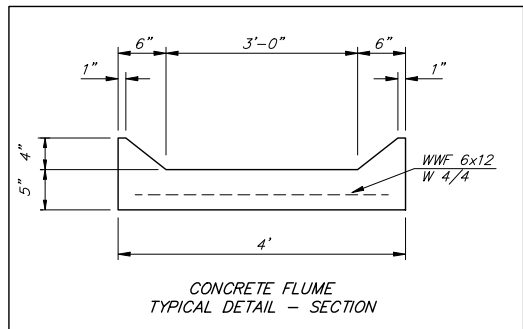
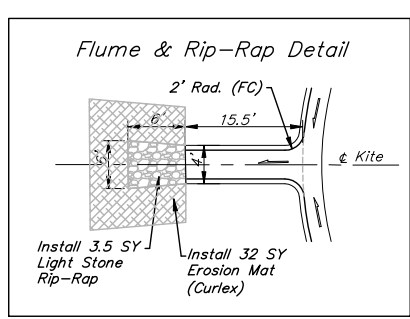
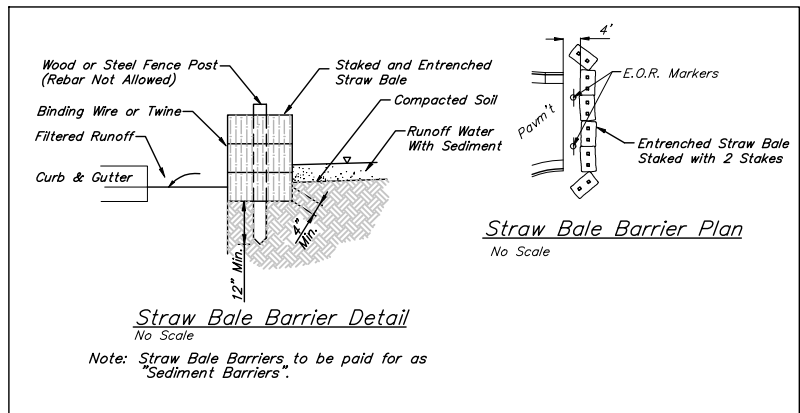
P.V.I.
 Elev. = 1372.60
 64' V.C.

Scale: 1" = 20'
 • = Iron



P.V.I.
 Elev. = 1359.10
 30' V.C.

Sta. 0+00 = C.L.
 Kite at West P.L.



P.V.I.
 Elev. = 1372.60
 64' V.C.

NOTE: ROLL TYPE CURB & GUTTER TO BE CONSTRUCTED ON THE PAVEMENT SHOWN ON THIS SHEET. TOP OF CURB ELEVATIONS ARE GIVEN FOR FULL HEIGHT CURB.

Baughman		FALCON FALLS 2ND ADD. - PH. I	
ENGINEERING SURVEYING PLANNING LANDSCAPE ARCHITECTURE		KITE	
PROJECT NUMBER 472-84264		STA 0+05.00 TO STA 5+00.00	
REVISIONS:	DISION TJW	DRAWN TMS	DATE 01/06
	APPROVED AEG	SCALE Noted	SHEET
		6 OF 44	
FalconFalls2nd/PhI/Str1		05-10-E376	