

**BENCHMARKS:**  
 BM #1: "□" CL face of catch basin, west side of Lot 4, Block 5, Falcon Falls Addition. Elev. = 1352.47 MSL

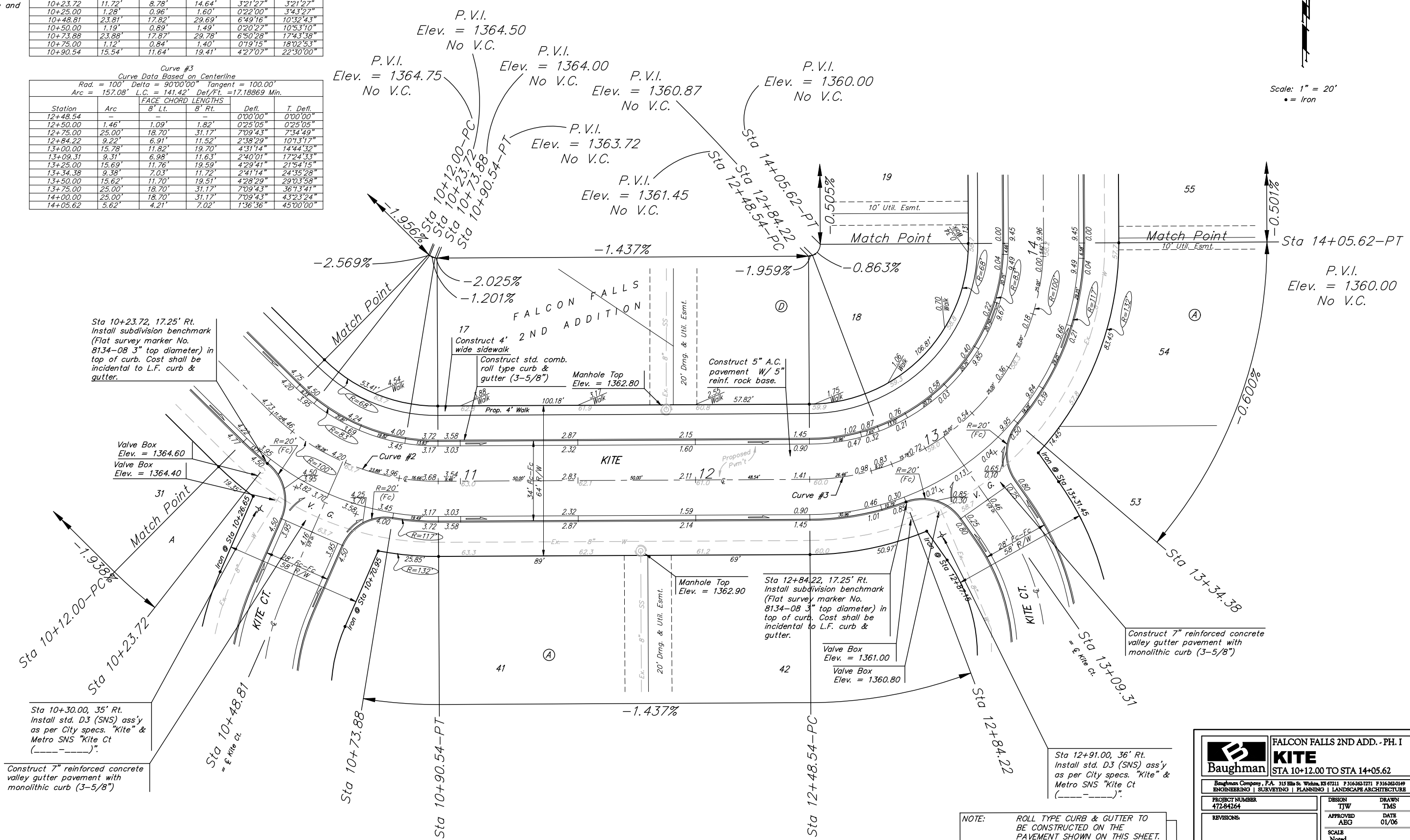
BM #2: "□" south end of the south curb return at Kite and Peregrine, Falcon Falls Addition. Elev. = 1359.85 MSL

Curve #2  
 Curve Data Based on Centerline  
 Rad. = 100' Delta = 45°00'00" Tangent = 41.42'  
 Arc = 78.54' L.C. = 76.54' Def/Ft. = 17.18869 Min.

Station	Arc	FACE CHORD LENGTHS		Defl.	T. Defl.
		8' Lt.	8' Rt.		
10+12.00	-	-	-	0°00'00"	0°00'00"
10+23.72	11.72'	8.78'	14.64'	3°21'27"	3°21'27"
10+25.00	1.28'	0.96'	1.60'	0°22'00"	3°43'27"
10+48.81	23.81'	17.82'	29.69'	6°49'16"	10°32'43"
10+50.00	1.19'	0.89'	1.49'	0°20'27"	10°53'10"
10+73.88	23.88'	17.87'	29.78'	6°50'28"	17°43'38"
10+75.00	1.12'	0.84'	1.40'	0°19'15"	18°02'53"
10+90.54	15.54'	11.64'	19.41'	4°27'07"	22°30'00"

Curve #3  
 Curve Data Based on Centerline  
 Rad. = 100' Delta = 90°00'00" Tangent = 100.00'  
 Arc = 157.08' L.C. = 141.42' Def/Ft. = 17.18869 Min.

Station	Arc	FACE CHORD LENGTHS		Defl.	T. Defl.
		8' Lt.	8' Rt.		
12+48.54	-	-	-	0°00'00"	0°00'00"
12+50.00	1.46'	1.09'	1.82'	0°25'05"	0°25'05"
12+75.00	25.00'	18.70'	31.17'	7°09'43"	7°34'49"
12+84.22	9.22'	6.91'	11.52'	2°38'29"	10°13'17"
13+00.00	15.78'	11.82'	19.70'	4°31'14"	14°44'32"
13+09.31	9.31'	6.98'	11.63'	2°40'01"	17°24'33"
13+25.00	15.69'	11.76'	19.59'	4°29'41"	21°54'15"
13+34.38	9.38'	7.03'	11.72'	2°41'14"	24°35'28"
13+50.00	15.62'	11.70'	19.51'	4°28'29"	29°03'58"
13+75.00	25.00'	18.70'	31.17'	7°09'43"	36°13'41"
14+00.00	25.00'	18.70'	31.17'	7°09'43"	43°23'24"
14+05.62	5.62'	4.21'	7.02'	1°36'36"	45°00'00"



Sta 10+23.72, 17.25' Rt. Install subdivision benchmark (Flat survey marker No. 8134-08 3" top diameter) in top of curb. Cost shall be incidental to L.F. curb & gutter.

Valve Box Elev. = 1364.60  
 Valve Box Elev. = 1364.40

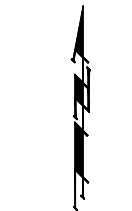
Sta 10+30.00, 35' Rt. Install std. D3 (SNS) ass'y as per City specs. "Kite" & Metro SNS "Kite Ct" (---).  
 Construct 7" reinforced concrete valley gutter pavement with monolithic curb (3-5/8")

Sta 12+84.22, 17.25' Rt. Install subdivision benchmark (Flat survey marker No. 8134-08 3" top diameter) in top of curb. Cost shall be incidental to L.F. curb & gutter.

Manhole Top Elev. = 1362.90  
 Valve Box Elev. = 1361.00  
 Valve Box Elev. = 1360.80

Sta 12+91.00, 36' Rt. Install std. D3 (SNS) ass'y as per City specs. "Kite" & Metro SNS "Kite Ct" (---).

**NOTE:** ROLL TYPE CURB & GUTTER TO BE CONSTRUCTED ON THE PAVEMENT SHOWN ON THIS SHEET. TOP OF CURB ELEVATIONS ARE GIVEN FOR FULL HEIGHT CURB.



Scale: 1" = 20'  
 • = Iron

<b>Baughman</b>		FALCON FALLS 2ND ADD. - PH. I	
KITE		STA 10+12.00 TO STA 14+05.62	
Baughman Company, P.A. 315 8th St. Wash, DC 20011 P 3162627271 F 3162620149			
ENGINEERING   SURVEYING   PLANNING   LANDSCAPE ARCHITECTURE			
PROJECT NUMBER 472-84264	DESIGN TJW	DRAWN TMS	
REVISIONS:	APPROVED AEG	DATE 01/06	
	SCALE Noted	SHEET	
			<b>8 OF 44</b>
Falcon Falls 2nd/Ph I Set3		05-10-E376	