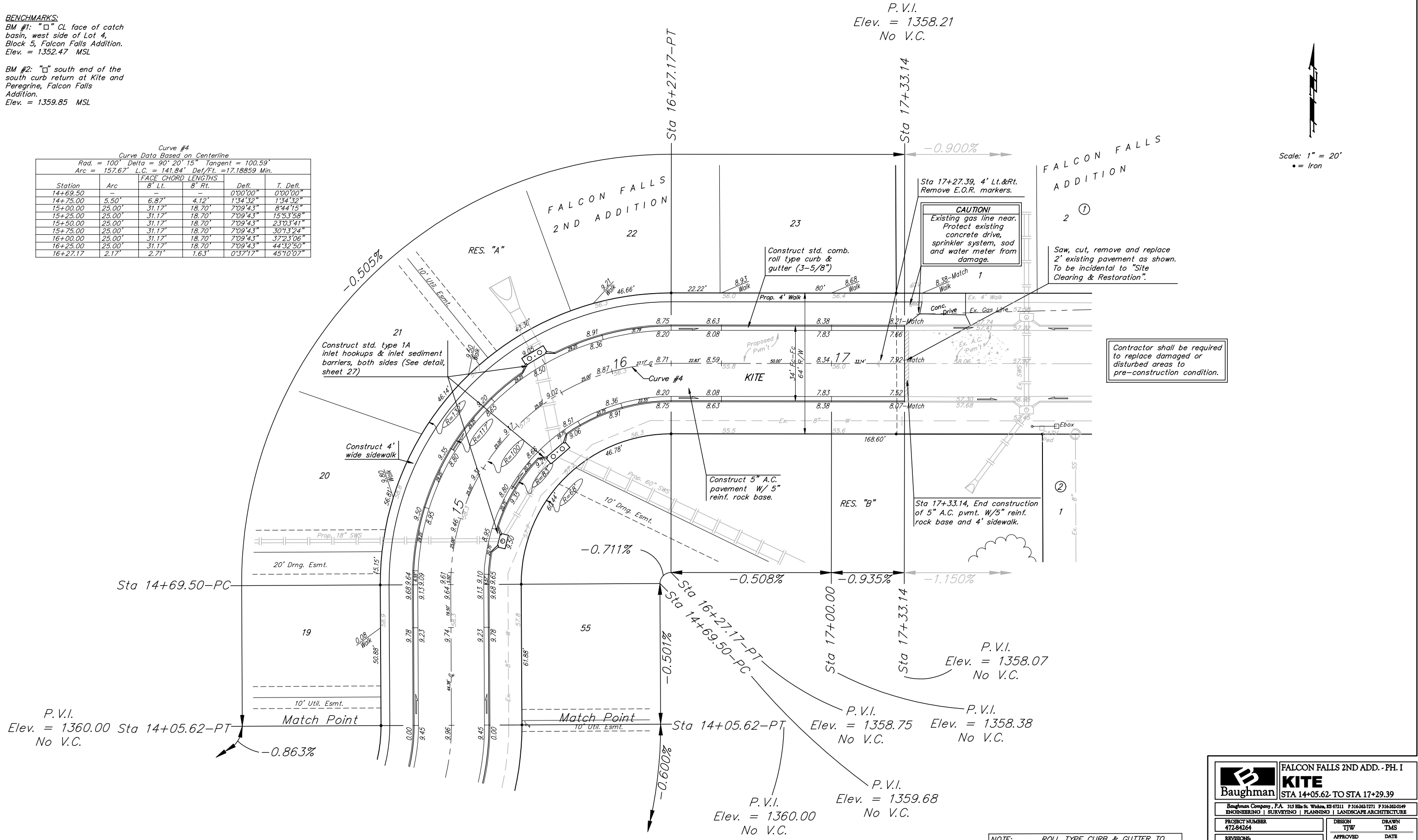


BENCHMARKS:
 BM #1: "□" CL face of catch basin, west side of Lot 4, Block 5, Falcon Falls Addition. Elev. = 1352.47 MSL

BM #2: "□" south end of the south curb return at Kite and Peregrine, Falcon Falls Addition. Elev. = 1359.85 MSL

Curve #4
 Curve Data Based on Centerline
 Rad. = 100' Delta = 90° 20' 15" Tangent = 100.59'
 Arc = 157.67' L.C. = 141.84' Def./Ft. = 17.18859 Min.

Station	Arc	FACE CHORD LENGTHS		Defl.	T. Defl.
		8' Lt.	8' Rt.		
14+69.50	-	-	-	0'00"00"	0'00"00"
14+75.00	5.50'	6.87'	4.12'	1'34"32"	1'34"32"
15+00.00	25.00'	31.17'	18.70'	7'09"43"	8'44"15"
15+25.00	25.00'	31.17'	18.70'	7'09"43"	15'53"58"
15+50.00	25.00'	31.17'	18.70'	7'09"43"	23'03'41"
15+75.00	25.00'	31.17'	18.70'	7'09"43"	30'13'24"
16+00.00	25.00'	31.17'	18.70'	7'09"43"	37'23'06"
16+25.00	25.00'	31.17'	18.70'	7'09"43"	44'32'50"
16+27.17	2.17'	2.71'	1.63'	0'37"17"	45'10'07"



Contractor shall be required to replace damaged or disturbed areas to pre-construction condition.

CAUTION!
 Existing gas line near. Protect existing concrete drive, sprinkler system, sod and water meter from damage.

Saw, cut, remove and replace 2" existing pavement as shown. To be incidental to "Site Clearing & Restoration".

NOTE: ROLL TYPE CURB & GUTTER TO BE CONSTRUCTED ON THE PAVEMENT SHOWN ON THIS SHEET. TOP OF CURB ELEVATIONS ARE GIVEN FOR FULL HEIGHT CURB.

Baughman		FALCON FALLS 2ND ADD. - PH. I	
		KITE	
		STA 14+05.62 TO STA 17+29.39	
Baughman Company, P.A. 315 Elm St. Wichita, KS 67211 P 316-262-7771 F 316-262-0149			
ENGINEERING SURVEYING PLANNING LANDSCAPE ARCHITECTURE			
PROJECT NUMBER 472-84264	DESIGN TJW	DRAWN TMS	
REVISIONS:	APPROVED AEG	DATE 01/06	
	SCALE Noted	SHEET	
			9 OF 44
FalconFalls2nd/PhI/Sheet		05-10-E376	